

PROJECT: _____	UNIT TAG: _____	QUANTITY: _____
REPRESENTATIVE: _____	TYPE OF SERVICE: _____	DATE: _____
ENGINEER: _____	SUBMITTED BY: _____	DATE: _____
CONTRACTOR: _____	APPROVED BY: _____	DATE: _____
	ORDER NO.: _____	DATE: _____

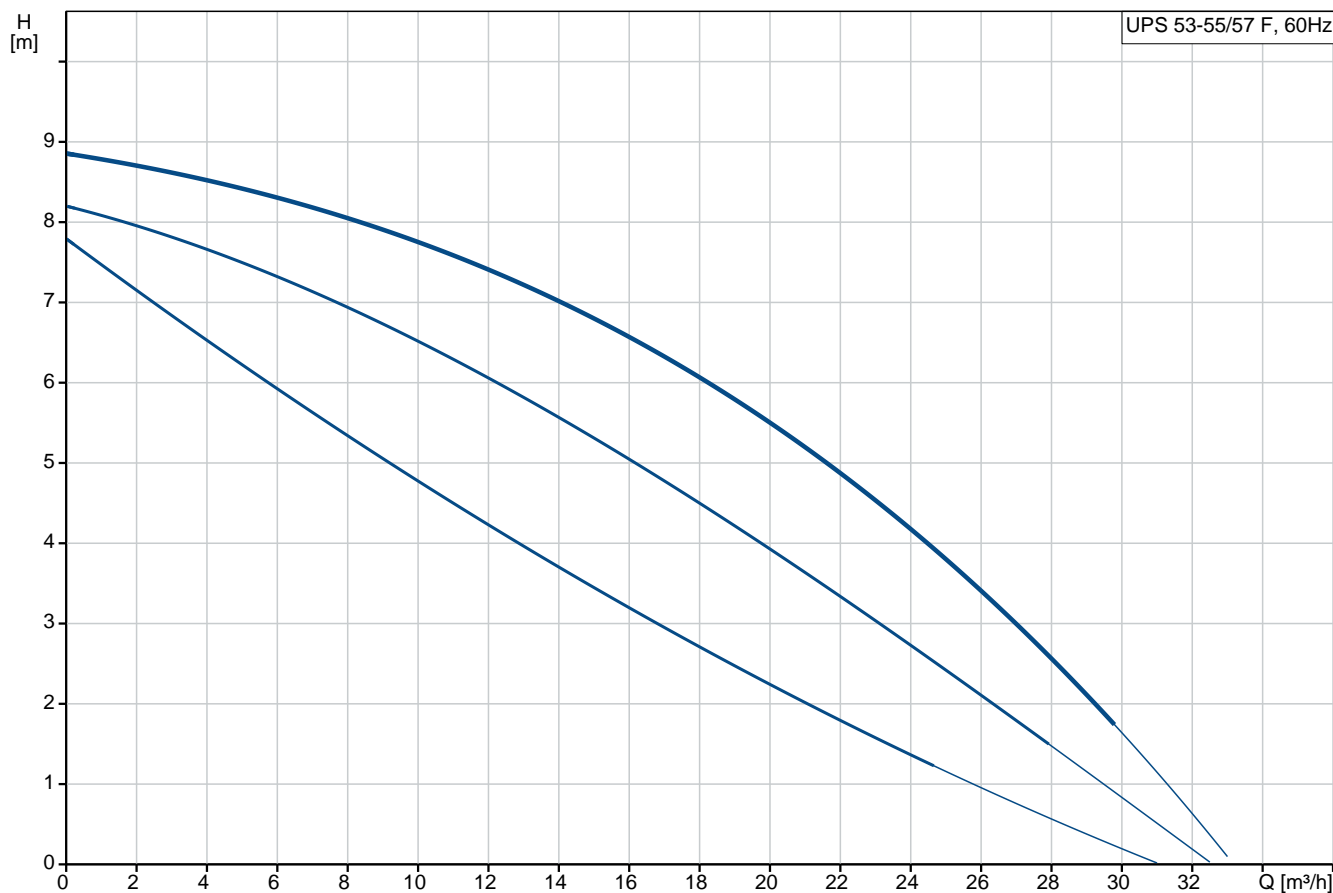


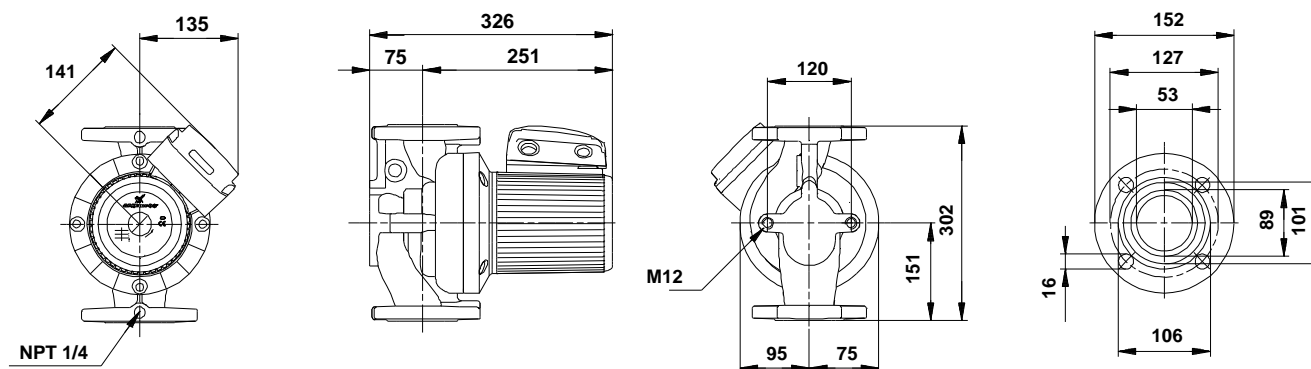
### UPS 53-55/57 F

Circulator pumps

Note! Product picture may differ from actual product

Conditions of Service	Pump Data	Motor Data
Flow: _____	Maximum operating pressure: 10 bar	Max. power input: 630 W
Head: _____	Liquid temperature range: -10 .. 120 °C	Rated voltage: 115 V
Efficiency: _____	Maximum ambient temperature: 40 °C	Mains frequency: 60 Hz
Liquid: Water	Approvals: CUL	Enclosure class: X4D
Temperature: 60 °C	Type of connection: F	Insulation class: H
NPSH required: m	Flange standard: USA	Motor protection: CONTACT
Viscosity: _____	Pipe connection: GF 53	Thermal protection: INT.
Specific Gravity: 0.985	Product number: On request	





**Materials:**

Pump housing: Cast iron  
EN-JL1040  
ASTM 35 B - 40 B

Impeller: Stainless steel  
DIN W.-Nr. 1.4301  
AISI 304

## Tender Text



Note! Product picture may differ from actual product

Product No.: On request

### UPS 53-55/57 F

The pump is of the canned rotor type, i.e. pump and motor form an integral unit without shaft seal and with only two gaskets for sealing.

The bearings are lubricated by the pumped liquid.

In order to avoid problems in connection with disposal, great importance has been attached to using as few different materials as possible.

The pump is characterized by:

- \* 3 speed motor.
- \* Ceramic radial bearings.
- \* Carbon axial bearing.
- \* Stainless steel rotor can, bearing plate

and rotor cladding.

- \* Aluminium alloy stator housing.
- \* Cast iron pump housing.
- \* Stator with built-in thermal switch.

The motor is a 1-phase motor.

The pump is supplied with a standard module in the terminal box.

The standard module is to be connected to the mains supply via external contactor.

### Controls:

Relay: Y

### Liquid:

Pumped liquid: Water  
Liquid temperature range: -10 .. 120 °C  
Liquid temperature during operation: 60 °C  
Density: 983.2 kg/m<sup>3</sup>

### Technical:

Approvals on nameplate: CUL

### Materials:

Pump housing: Cast iron  
EN-JL1040  
ASTM 35 B - 40 B  
Impeller: Stainless steel  
DIN W.-Nr. 1.4301

AISI 304

**Installation:**


Range of ambient temperature: 0 .. 40 °C  
Maximum operating pressure: 10 bar  
Flange standard: USA  
Type of connection: F  
Pipe connection: GF 53  
Pressure rating: 145 psi  
Port-to-port length: 302 mm

**Electrical data:**

Power input in speed 1: 600 W  
Power input in speed 2: 610 W  
Max. power input: 630 W  
Mains frequency: 60 Hz  
Rated voltage: 1 x 115 V  
Current in speed 1: 5.8 A  
Current in speed 2: 5.7 A  
Current in speed 3: 5.85 A  
Cos phi in speed 1: 0,9  
Cos phi in speed 2: 0,93  
Cos phi: 0,94  
Capacitor size - run: 60 µF/250 V  
Enclosure class (IEC 34-5): X4D  
Insulation class (IEC 85): H

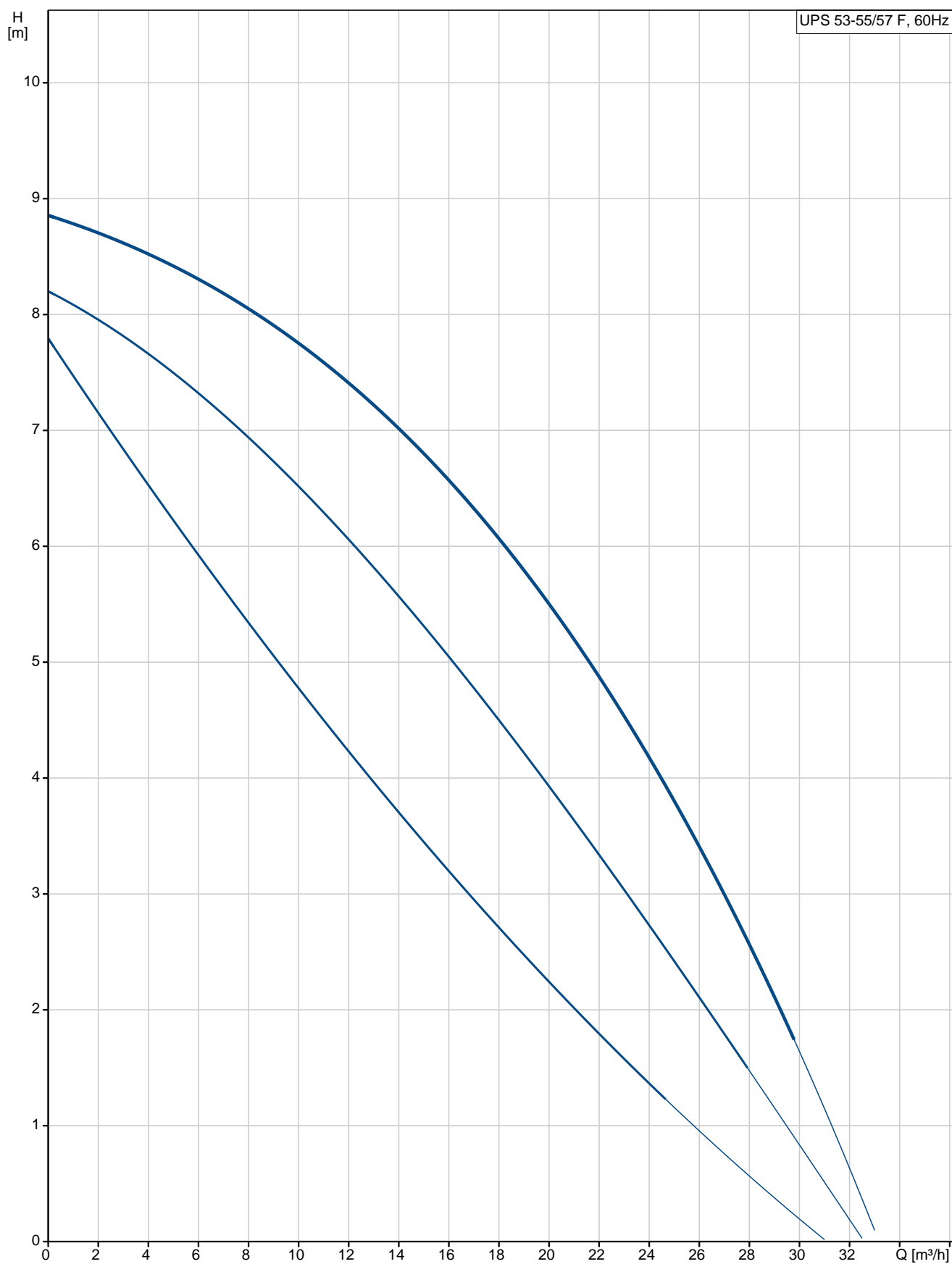
**Others:**

Net weight: 23.7 kg  
Gross weight: 24.8 kg  
Shipping volume: 0.059 m<sup>3</sup>

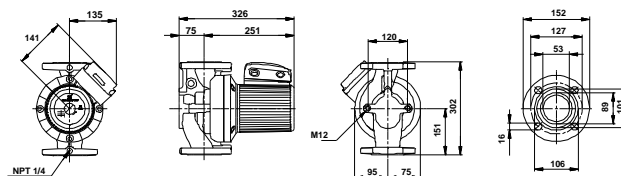
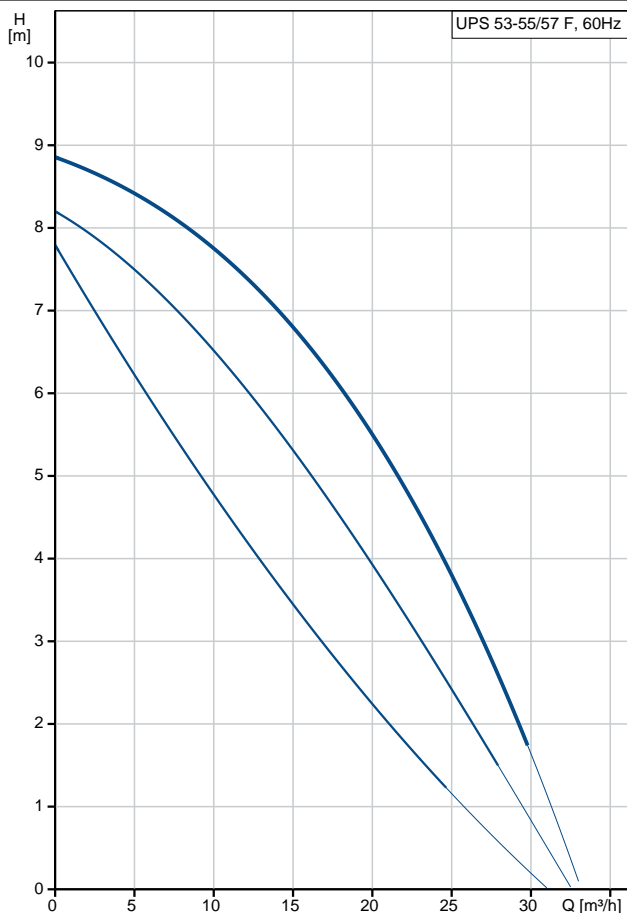
Position	Qty.	Description
	1	<p><b>UPS 53-55/57 F</b></p>  <p><b>Note! Product picture may differ from actual product</b></p> <p>Product No.: On request</p> <p>The pump is of the canned rotor type, i.e. pump and motor form an integral unit without shaft seal and with only two gaskets for sealing. The bearings are lubricated by the pumped liquid.</p> <p>In order to avoid problems in connection with disposal, great importance has been attached to using as few different materials as possible.</p> <p>The pump is characterized by:</p> <ul style="list-style-type: none"> <li>* 3 speed motor.</li> <li>* Ceramic radial bearings.</li> <li>* Carbon axial bearing.</li> <li>* Stainless steel rotor can, bearing plate and rotor cladding.</li> <li>* Aluminium alloy stator housing.</li> <li>* Cast iron pump housing.</li> <li>* Stator with built-in thermal switch.</li> </ul> <p>The motor is a 1-phase motor.</p> <p>The pump is supplied with a standard module in the terminal box. The standard module is to be connected to the mains supply via external contactor.</p> <p><b>Controls:</b></p> <p>Relay: Y</p> <p><b>Liquid:</b></p> <p>Pumped liquid: Water</p> <p>Liquid temperature range: -10 .. 120 °C</p> <p>Liquid temperature during operation: 60 °C</p> <p>Density: 983.2 kg/m³</p> <p><b>Technical:</b></p> <p>Approvals on nameplate: CUL</p> <p><b>Materials:</b></p> <p>Pump housing: Cast iron EN-JL1040 ASTM 35 B - 40 B</p> <p>Impeller: Stainless steel DIN W.-Nr. 1.4301 AISI 304</p>

Position	Qty.	Description
		<p><b>Installation:</b></p> <p>Range of ambient temperature: 0 .. 40 °C</p> <p>Maximum operating pressure: 10 bar</p> <p>Flange standard: USA</p> <p>Type of connection: F</p> <p>Pipe connection: GF 53</p> <p>Pressure rating: 145 psi</p> <p>Port-to-port length: 302 mm</p> <p><b>Electrical data:</b></p> <p>Power input in speed 1: 600 W</p> <p>Power input in speed 2: 610 W</p> <p>Max. power input: 630 W</p> <p>Mains frequency: 60 Hz</p> <p>Rated voltage: 1 x 115 V</p> <p>Current in speed 1: 5.8 A</p> <p>Current in speed 2: 5.7 A</p> <p>Current in speed 3: 5.85 A</p> <p>Cos phi in speed 1: 0,9</p> <p>Cos phi in speed 2: 0,93</p> <p>Cos phi: 0,94</p> <p>Capacitor size - run: 60 µF/250 V</p> <p>Enclosure class (IEC 34-5): X4D</p> <p>Insulation class (IEC 85): H</p> <p><b>Others:</b></p> <p>Net weight: 23.7 kg</p> <p>Gross weight: 24.8 kg</p> <p>Shipping volume: 0.059 m³</p>

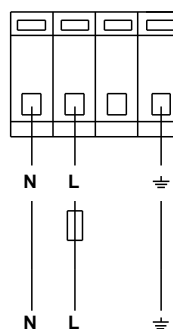
## On request UPS 53-55/57 F 60 Hz



Description	Value
<b>General information:</b>	
Product name:	UPS 53-55/57 F
Product No:	On request
EAN number:	On request
<b>Technical:</b>	
Speed no:	3
Head max:	55/57 dm
Approvals on nameplate:	CUL
Model:	C
<b>Materials:</b>	
Pump housing:	Cast iron
	EN-JL1040
	ASTM 35 B - 40 B
Impeller:	Stainless steel
	DIN W.-Nr. 1.4301
	AISI 304
<b>Installation:</b>	
Range of ambient temperature:	0 .. 40 °C
Maximum operating pressure:	10 bar
Flange standard:	USA
Type of connection:	F
Pipe connection:	GF 53
Pressure rating:	145 psi
Port-to-port length:	302 mm
<b>Liquid:</b>	
Pumped liquid:	Water
Liquid temperature range:	-10 .. 120 °C
Liquid temperature during operation:	60 °C
Density:	983.2 kg/m <sup>3</sup>
<b>Electrical data:</b>	
Power input in speed 1:	600 W
Power input in speed 2:	610 W
Max. power input:	630 W
Mains frequency:	60 Hz
Rated voltage:	1 x 115 V
Current in speed 1:	5.8 A
Current in speed 2:	5.7 A
Current in speed 3:	5.85 A
Cos phi in speed 1:	0,9
Cos phi in speed 2:	0,93
Cos phi:	0,94
Capacitor size - run:	60 µF/250 V
Enclosure class (IEC 34-5):	X4D
Insulation class (IEC 85):	H
Motor protec:	CONTACT
Thermal protec:	INT.
<b>Controls:</b>	
Relay:	Y
Pos term box:	1.30H
<b>Others:</b>	
Net weight:	23.7 kg
Gross weight:	24.8 kg



## 1 Phase







Company name:

Created by:

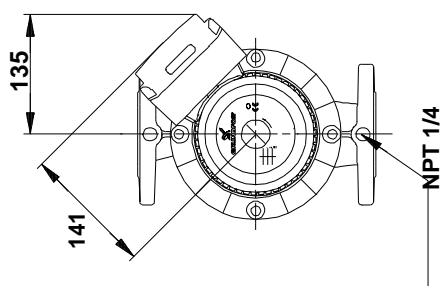
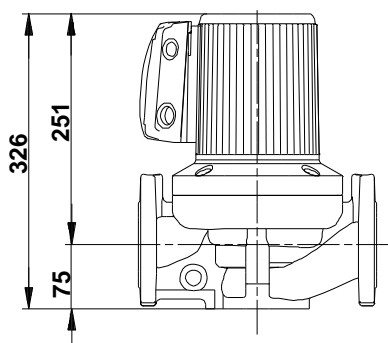
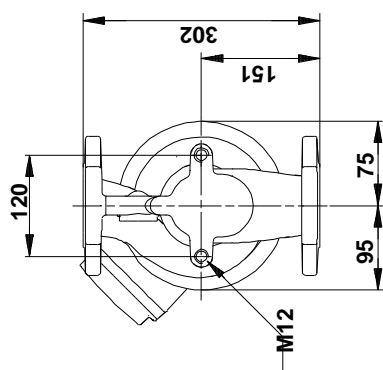
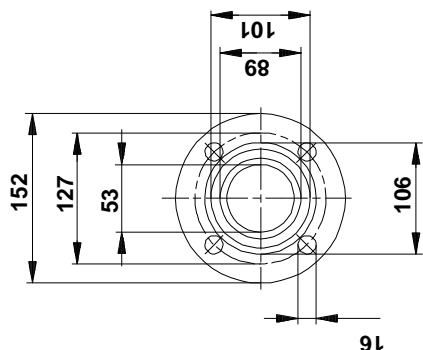
Phone:

Date:

28/11/2017

Description	Value
Shipping volume:	0.059 m <sup>3</sup>
Sales region:	Namreg

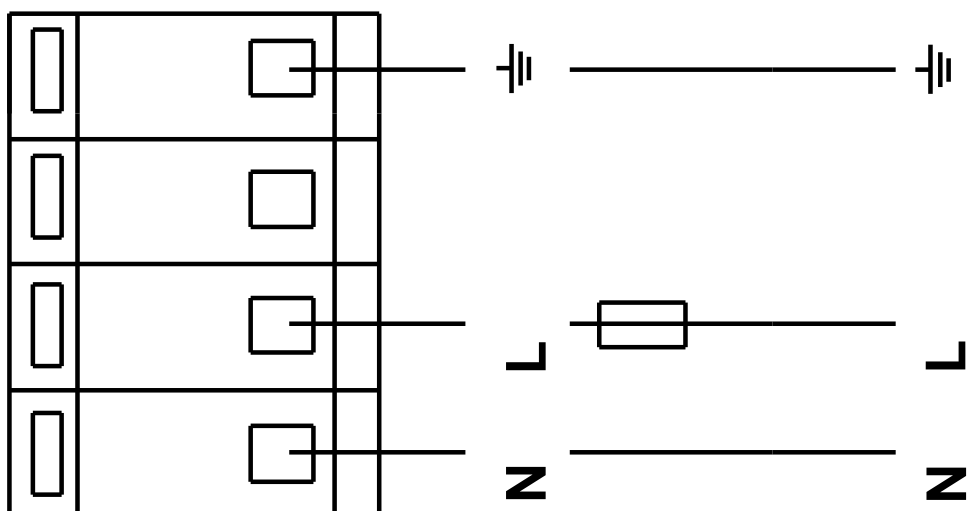
## On request UPS 53-55/57 F 60 Hz



Note! All units are in [mm] unless others are stated.  
Disclaimer: This simplified dimensional drawing does not show all details.

## On request UPS 53-55/57 F 60 Hz

**1 Phase**



Note! All units are in [mm] unless others are stated.



Company name:

Created by:

Phone:

Date:

28/11/2017

---

**Order Data:**

Product name: UPS 53-55/57 F

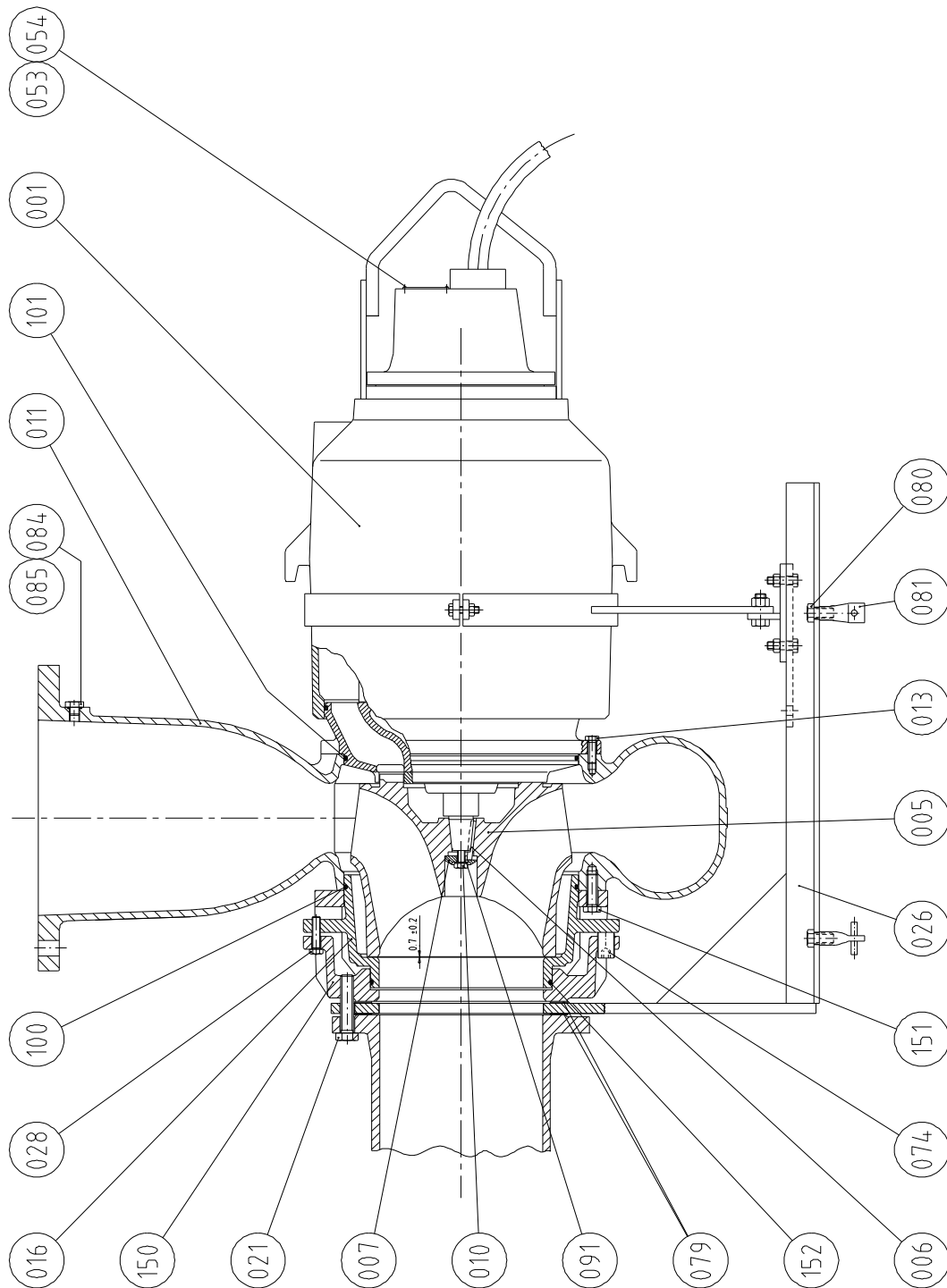
Amount: 1

Product No: On request

Total: Price on request

---

## Sectional drawing (A\_944781)



## Sectional drawing (A\_944775)

