

PROJECT: _____	UNIT TAG: _____	QUANTITY: _____
REPRESENTATIVE: _____	TYPE OF SERVICE: _____	DATE: _____
ENGINEER: _____	SUBMITTED BY: _____	DATE: _____
CONTRACTOR: _____	APPROVED BY: _____	DATE: _____
	ORDER NO.: _____	DATE: _____

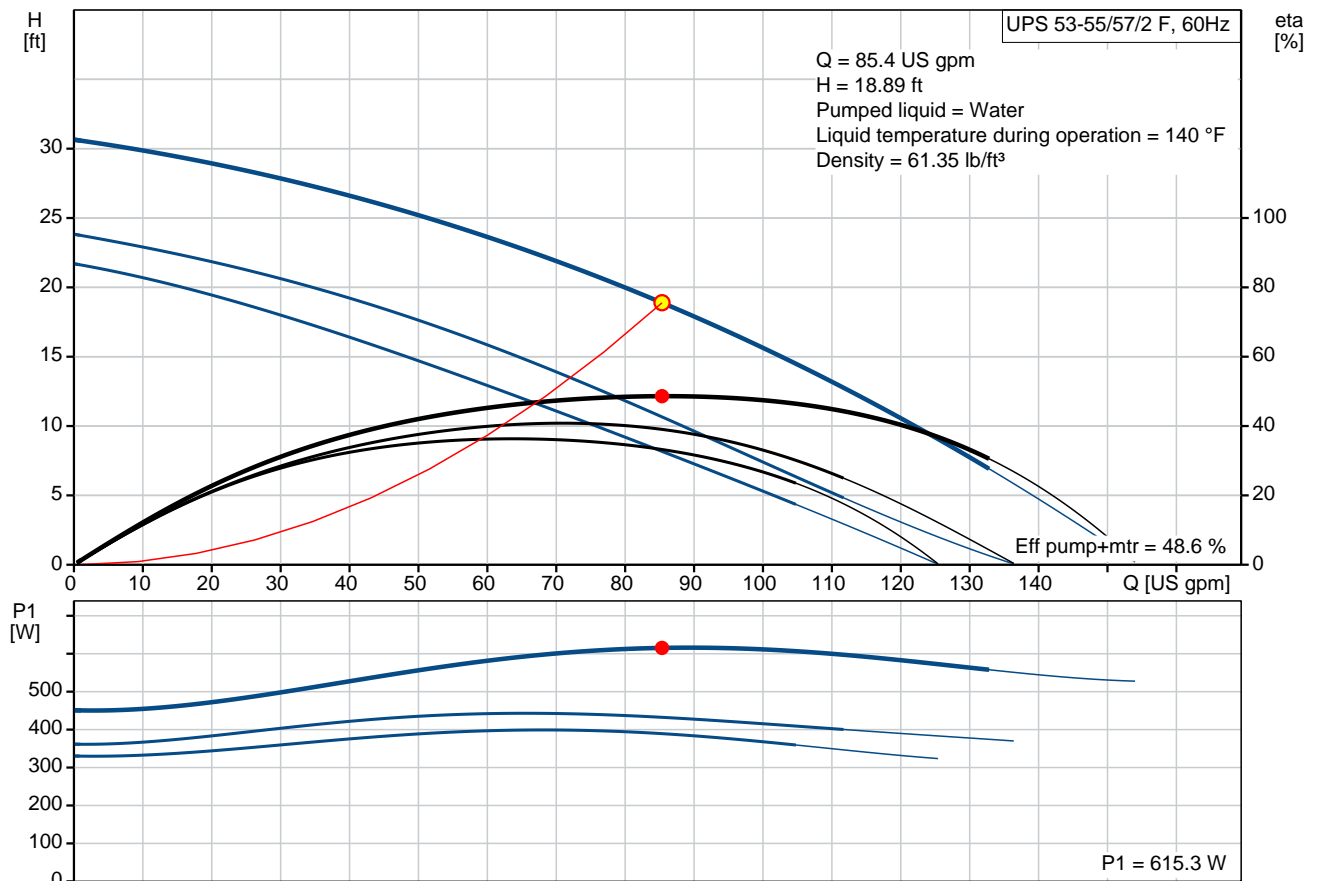


UPS 53-55/57/2 F

Circulator pumps

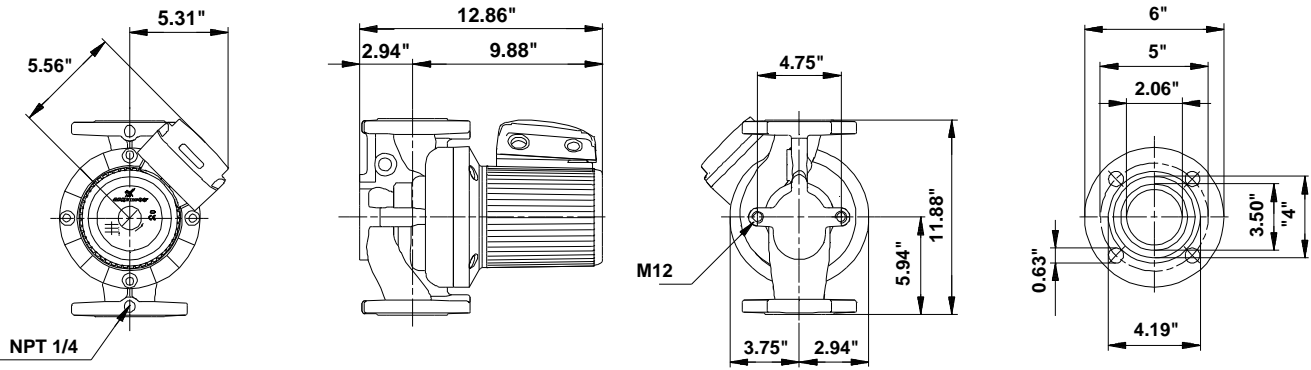
Product photo could vary from the actual product

Conditions of Service		Pump Data		Motor Data	
Flow:	85.4 US gpm	Maximum operating pressure:	145.04 psi	Max. power input:	610 W
Head:	18.89 ft	Liquid temperature range:	14 .. 248 °F	Rated voltage:	208-230 V
Efficiency:	48.6 %	Maximum ambient temperature:	104 °F	Main frequency:	60 Hz
Liquid:	Water	Approvals:	CUL	Number of poles:	2
Temperature:	140 °F	Type of connection:	F	Enclosure class:	X4D
NPSH required:	ft	Flange standard:	USA	Insulation class:	F
Viscosity:		Pipe connection:	GF 53	Motor protection:	CONTACT
Specific Gravity:	0.985	Product number:	96654375	Thermal protection:	external



4

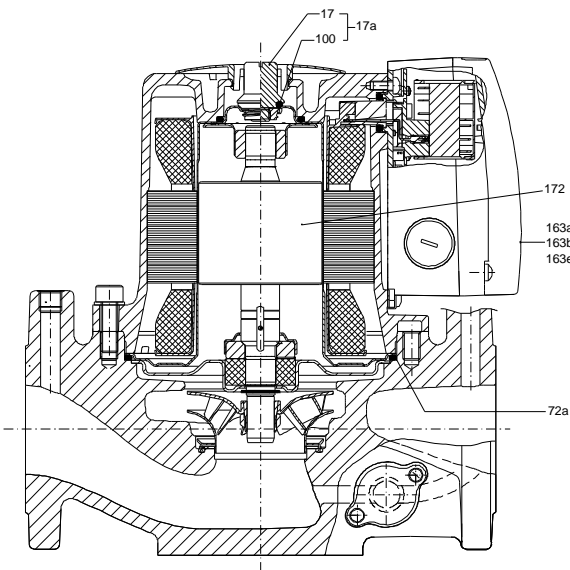
3




Materials:

Pump housing: Cast iron
EN-JL1040
ASTM 35 B - 40 B

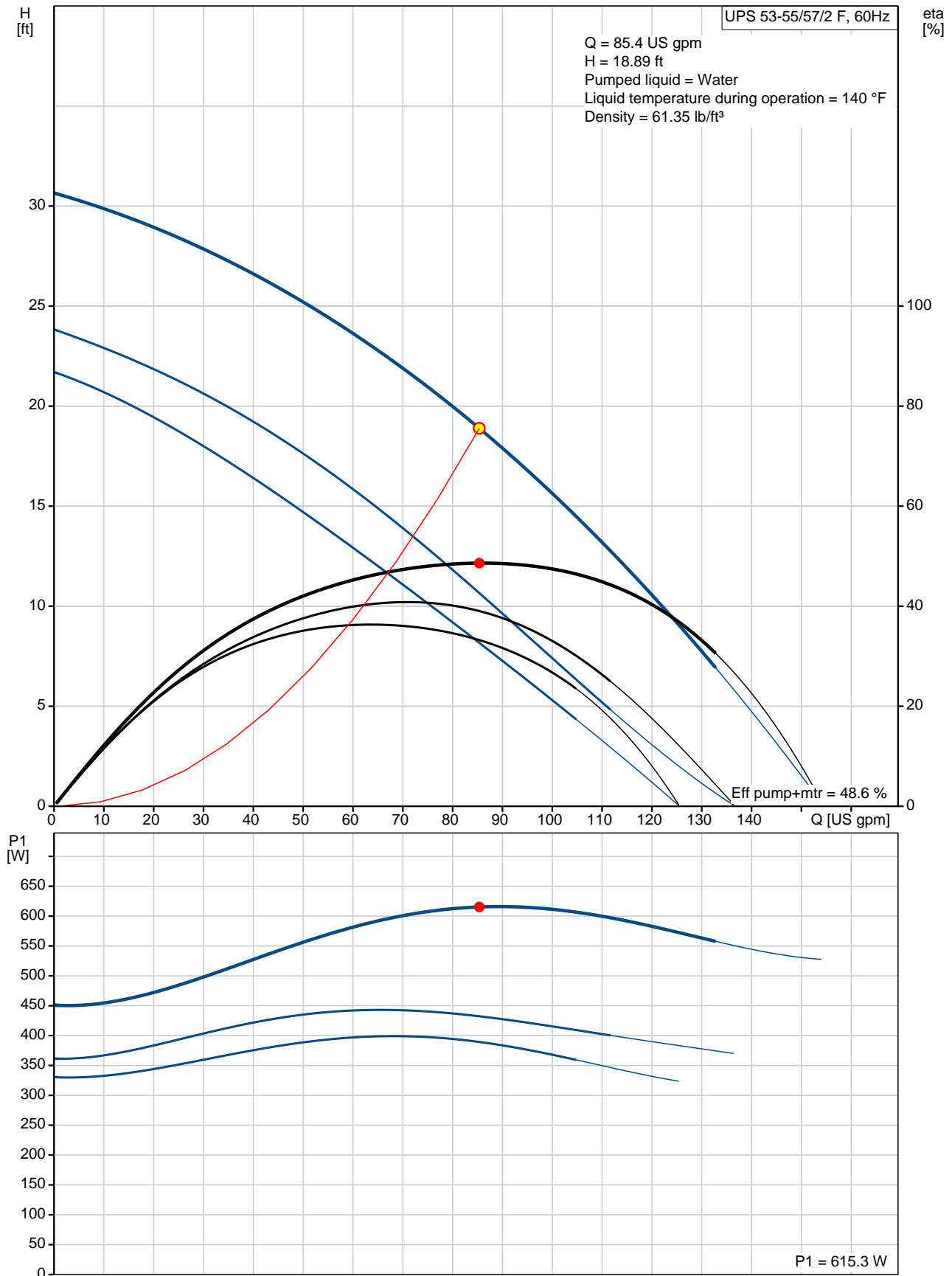
Impeller: Stainless steel
DIN W.-Nr. 1.4301
AISI 304



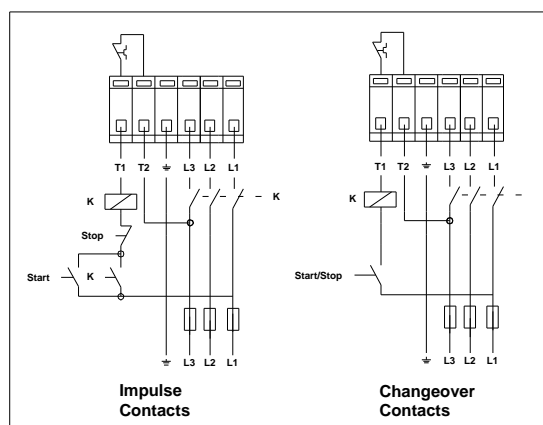
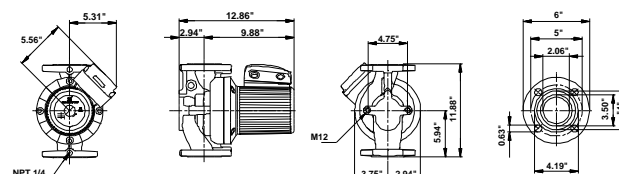
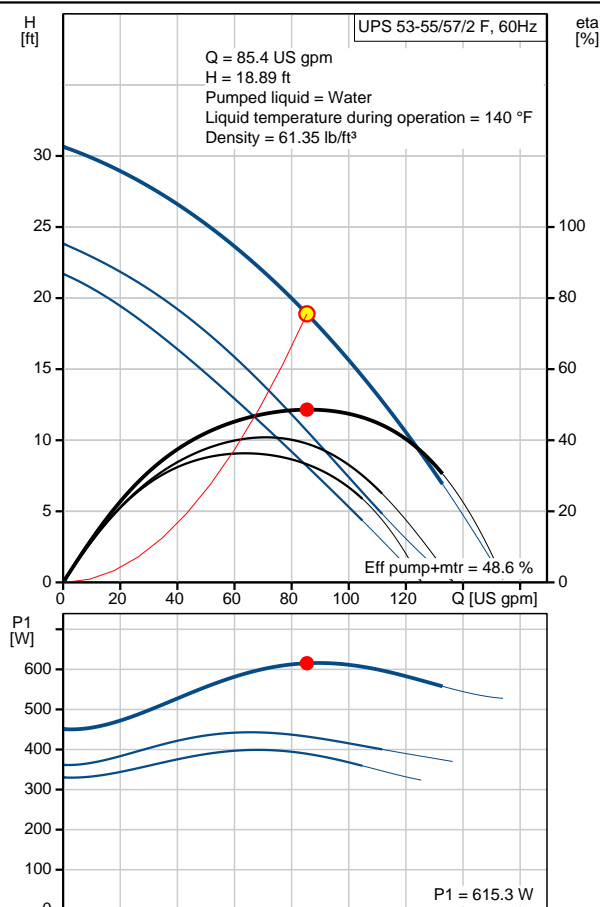
Count	Description
1	<p>UPS 53-55/57/2 F</p>  <p>Product photo could vary from the actual product</p> <p>Product No.: 96654375</p> <p>The pump is of the canned rotor type, i.e. pump and motor form an integral unit without shaft seal and with only two gaskets for sealing. The bearings are lubricated by the pumped liquid.</p> <p>In order to avoid problems in connection with disposal, great importance has been attached to using as few different materials as possible.</p> <p>The pump is characterized by:</p> <ul style="list-style-type: none"> * 3 speed motor. * Ceramic radial bearings. * Carbon axial bearing. * Stainless steel rotor can, bearing plate and rotor cladding. * Aluminium alloy stator housing. * Cast iron pump housing. * Stator with built-in thermal switch. <p>The motor is a 3-phase motor.</p> <p>The pump is supplied with a standard module in the terminal box. The standard module is to be connected to the mains supply via external contactor.</p> <p>Controls:</p> <p>Relay: without relay</p> <p>Liquid:</p> <p>Pumped liquid: Water</p> <p>Liquid temperature range: 14 .. 248 °F</p> <p>Selected liquid temperature: 140 °F</p> <p>Density: 61.35 lb/ft³</p> <p>Technical:</p> <p>Actual calculated flow: 85.4 US gpm</p> <p>Resulting head of the pump: 18.89 ft</p> <p>Approvals on nameplate: CUL</p> <p>Materials:</p> <p>Pump housing: Cast iron EN-JL1040 ASTM 35 B - 40 B</p> <p>Impeller: Stainless steel DIN W.-Nr. 1.4301</p>

Count	Description
	AISI 304
	Installation: Range of ambient temperature: 32 .. 104 °F Maximum operating pressure: 145.04 psi Flange standard: USA Type of connection: F Pipe connection: GF 53 Pressure stage: 145 psi Port-to-port length: 11 7/8 in
	Electrical data: Power input in speed 1: 0.5364 HP Power input in speed 2: 440 W Max. power input: 610 W Main frequency: 60 Hz Rated voltage: 3 x 208-230 V Current in speed 1: 1.08 A Current in speed 2: 1.2 A Current in speed 3: 1.92 A Cos phi in speed 1: 0.93 Cos phi in speed 2: 0.92 Cos phi: 0.8 Number of poles: 2 Enclosure class (IEC 34-5): X4D Insulation class (IEC 85): F
	Others: Net weight: 52.3 lb Gross weight: 54 lb Shipping volume: 2.08 ft³ Country of origin: DE Custom tariff no.: 8413.70.2015

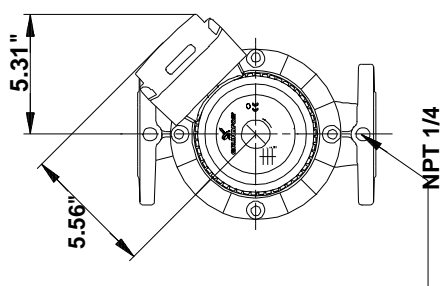
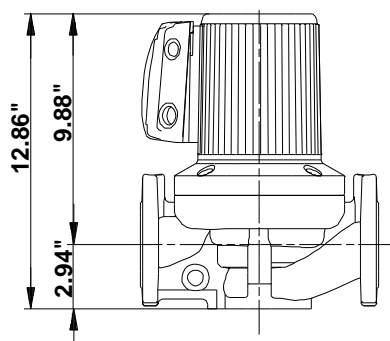
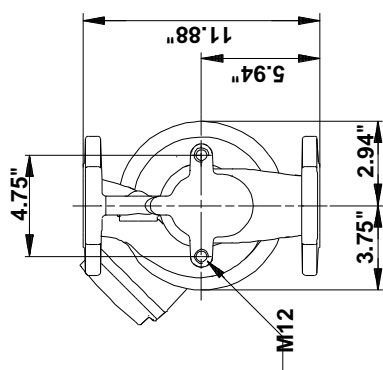
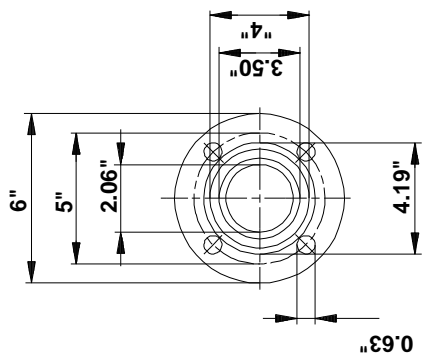
96654375 UPS 53-55/57/2 F 60 Hz



Description	Value
General information:	
Product name:	UPS 53-55/57/2 F
Product No.:	96654375
EAN:	5700836884922
Technical:	
Speed Number:	3
Actual calculated flow:	85.4 US gpm
Resulting head of the pump:	18.89 ft
Head max:	55/57 dm
Approvals on nameplate:	CUL
Model:	C
Materials:	
Pump housing:	Cast iron EN-JL1040 ASTM 35 B - 40 B
Impeller:	Stainless steel DIN W.-Nr. 1.4301 AISI 304
Installation:	
Range of ambient temperature:	32 .. 104 °F
Maximum operating pressure:	145.04 psi
Flange standard:	USA
Type of connection:	F
Pipe connection:	GF 53
Pressure stage:	145 psi
Port-to-port length:	11 7/8 in
Liquid:	
Pumped liquid:	Water
Liquid temperature range:	14 .. 248 °F
Selected liquid temperature:	140 °F
Density:	61.35 lb/ft³
Electrical data:	
Power input in speed 1:	0.5364 HP
Power input in speed 2:	440 W
Max. power input:	610 W
Main frequency:	60 Hz
Rated voltage:	3 x 208-230 V
Current in speed 1:	1.08 A
Current in speed 2:	1.2 A
Current in speed 3:	1.92 A
Cos phi in speed 1:	0.93
Cos phi in speed 2:	0.92
Cos phi:	0.8
Number of poles:	2
Enclosure class (IEC 34-5):	X4D
Insulation class (IEC 85):	F
Motor protection:	CONTACT
Thermal protec:	external
Controls:	
Relay:	without relay
Pos term box:	1.30H
Others:	
Net weight:	52.3 lb
Gross weight:	54 lb
Shipping volume:	2.08 ft³
Sales region:	Namreg
Country of origin:	DE
Custom tariff no.:	8413.70.2015

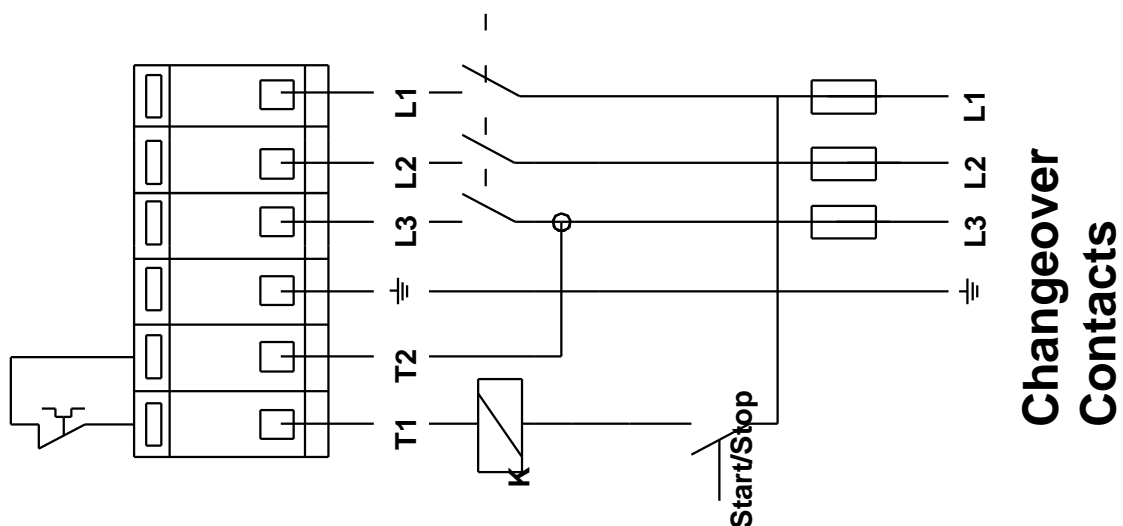


96654375 UPS 53-55/57/2 F 60 Hz

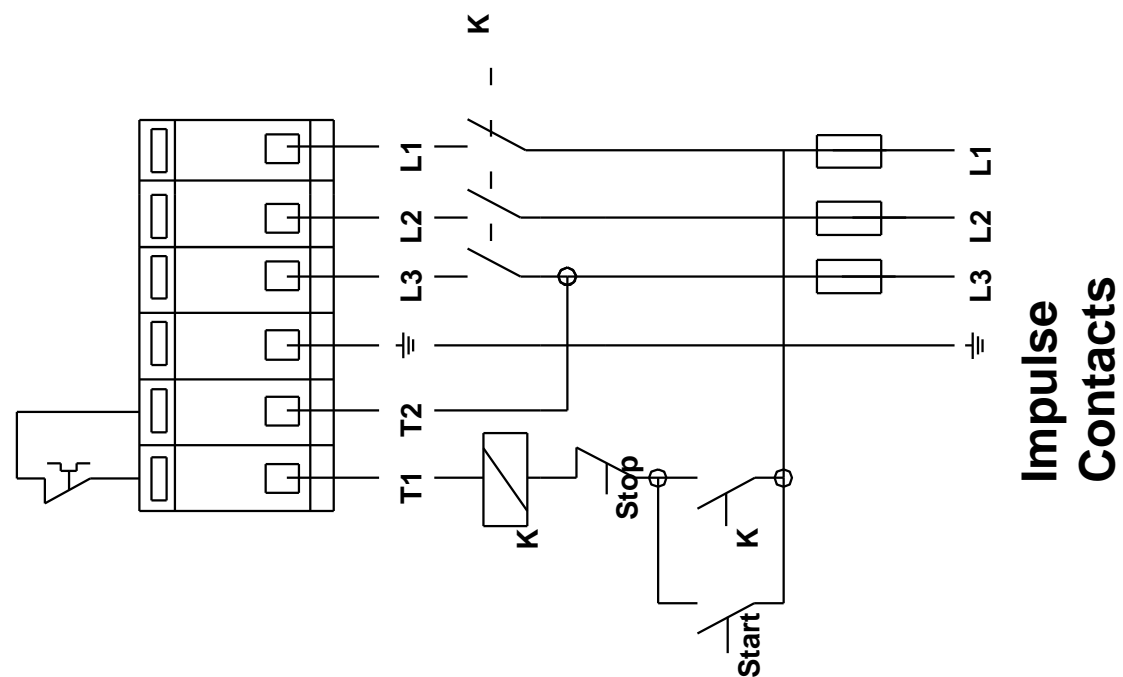


Note! All units are in [in] unless otherwise stated.
Disclaimer: This simplified dimensional drawing does not show all details.

96654375 UPS 53-55/57/2 F 60 Hz



Changeover Contacts



Impulse Contacts



Company name:

Created by:

Phone:

Date:

4/11/2019

Order Data:

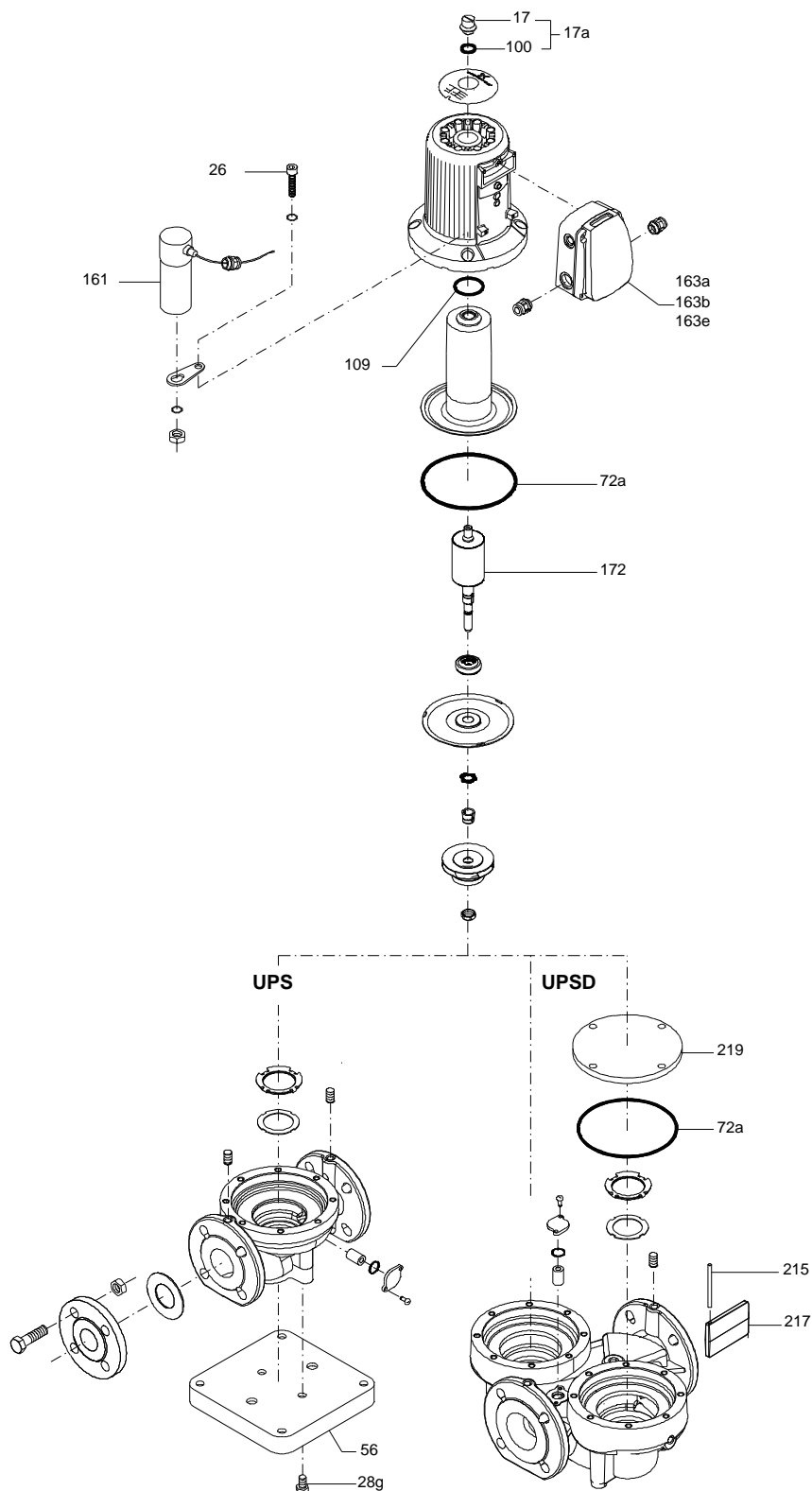
Product name: UPS 53-55/57/2 F

Amount: 1

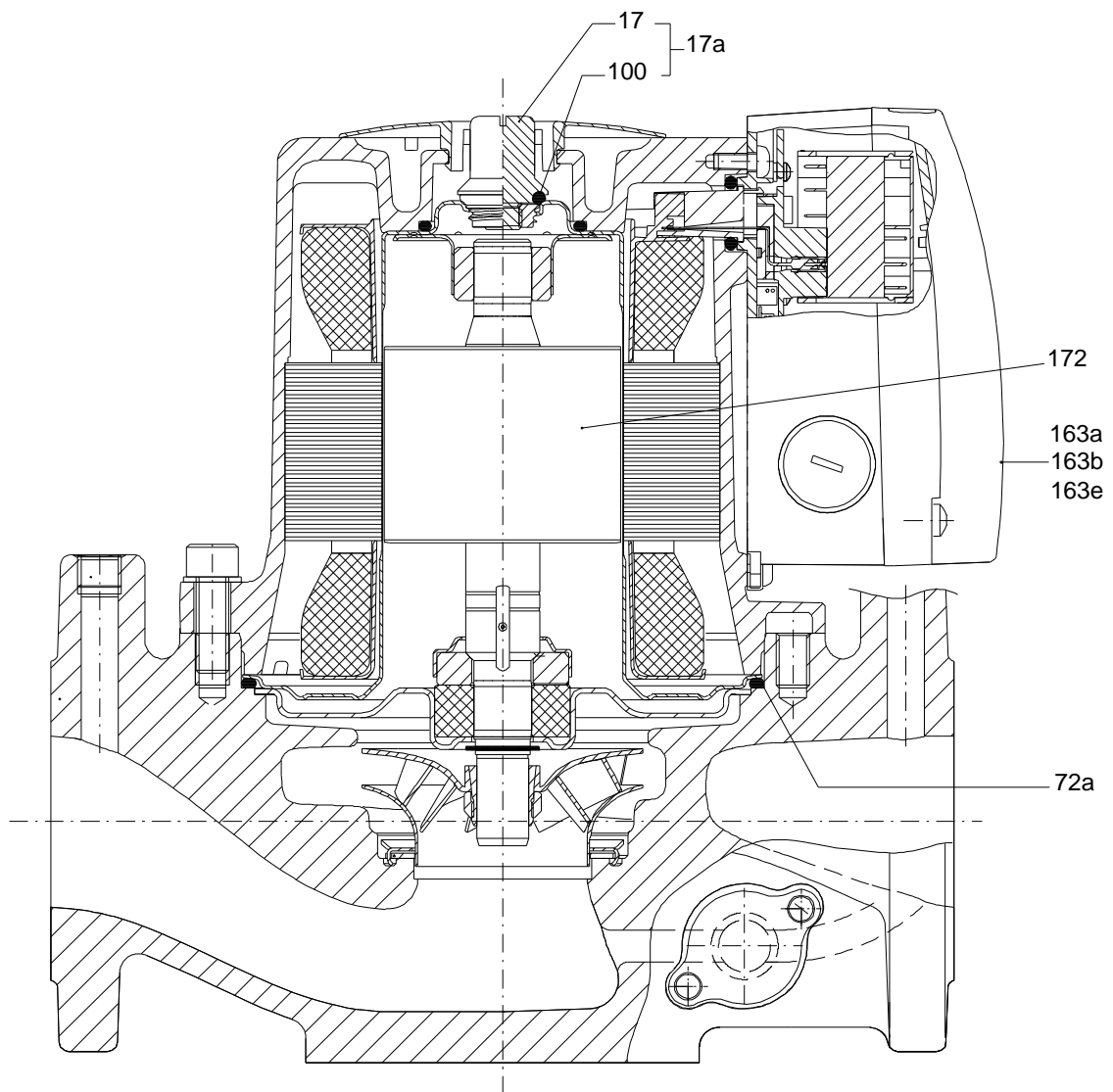
Product No.: 96654375

Total: Price on request

(TM010410 3905)



(TM010371 3905)



TM010371



Company name:

Created by:

Phone:

Date:

4/11/2019

Parts list UPS 53-55/57/2 F, Prod number 96654375

Produced After 0646 (production year and week number)

Position	Description	Annotation	Classification data	Part No.	Count	Unit
163b	Terminal box cpl.		Designation: WITH STANDARD MODULE		1	pcs