

SB, SBA

Installation and operating instructions



English (GB) Functional profile and user manual

Original installation and operating instructions

These installation and operating instructions describe Grundfos SB and SBA.

Sections 1-5 give the information necessary to be able to unpack, install and start up the product in a safe way.

Sections 6-10 give important information about the product, as well as information on service, fault finding and disposal of the product.

CONTENTS

	Page
1. General information	2
1.1 Symbols used in this document	2
2. Receiving the product	3
2.1 Inspecting the packaging	3
2.2 Scope of delivery	3
3. Installing the product	3
3.1 Location	3
3.2 Pump with float switch and side inlet	3
3.3 Connecting the outlet hose or pipe	4
3.4 Non-return valve	4
3.5 Pump position	4
3.6 Mechanical installation	4
3.7 Electrical connection	4
4. Starting up the product	5
4.1 SBA starting and stopping conditions	5
5. Handling and storing the product	6
5.1 Handling the product	6
5.2 Storing the product	6
5.3 Frost protection	6
6. Product introduction	6
6.1 Product description	6
6.2 SBA functions	6
6.3 Pumped liquids	6
6.4 Identification	7
7. Maintaining the product	7
8. Fault finding the product	8
9. Technical data	10
9.1 Operating conditions	10
9.2 Mechanical data	10
9.3 Electrical data	10
9.4 Dimensions	10
10. Disposing of the product	10



Read this document before you install the product. Installation and operation must comply with local regulations and accepted codes of good practice.



This appliance can be used by children aged from 8 years and above and persons with reduced physical, sensory or mental capabilities or lack of experience and knowledge if they have been given supervision or instruction concerning use of the appliance in a safe way and understand the hazards involved.

Children shall not play with the appliance. Cleaning and user maintenance shall not be made by children without supervision.



Make sure that the system in which the pump is incorporated is designed for the maximum pump pressure.



This pump has been evaluated for use with water only.

1. General information

1.1 Symbols used in this document

DANGER



Indicates a hazardous situation which, if not avoided, will result in death or serious personal injury.

WARNING



Indicates a hazardous situation which, if not avoided, could result in death or serious personal injury.

CAUTION



Indicates a hazardous situation which, if not avoided, could result in minor or moderate personal injury.



Tips and advice that make the work easier.



If these instructions are not observed, it may result in malfunction or damage to the equipment.



A blue or grey circle with a white graphical symbol indicates that an action must be taken.



A red or grey circle with a diagonal bar, possibly with a black graphical symbol, indicates that an action must not be taken or must be stopped.

2. Receiving the product

2.1 Inspecting the packaging

Before installation, check that the pump is as ordered, and that no visible parts have been damaged.

If components are damaged or missing, contact your local Grundfos sales company.

2.2 Scope of delivery

- Pump
- non-return valve, SB only
- adapter
- floating inlet strainer, variant with side inlet only
- installation and operating instructions
- quick guide.

3. Installing the product



Observe local regulations concerning limits for manual lifting or handling.

CAUTION

Crushing of feet

- Minor or moderate personal injury
- Use safety shoes when handling the pump.



DANGER

Electric shock

- Death or serious personal injury
- Switch off the power supply before starting any work on the product. Make sure that the power supply cannot be accidentally switched on.



3.1 Location

Install SBA pumps so that the height between the pump and the highest tapping point does not exceed these values:

SBA 3-35: 13 metres.

SBA 3-45: 20 metres.

Connect SB pumps to an external controller.

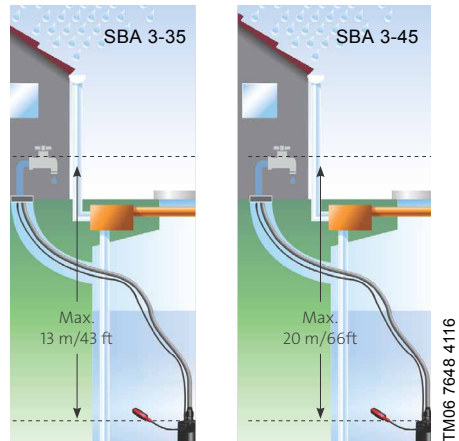


Fig. 1 Highest tapping point, SBA

3.2 Pump with float switch and side inlet

If you install the pump in a well, the minimum dimensions of the well must be as shown in fig. 2.

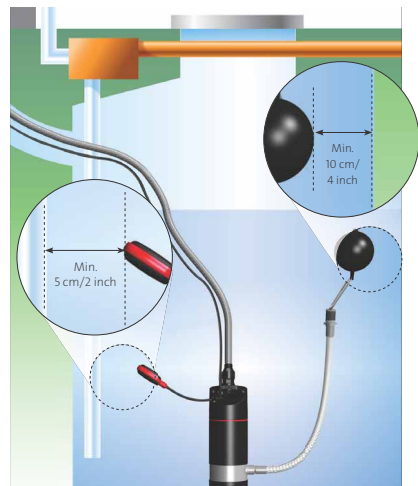


Fig. 2 Minimum installation dimensions

TM06 7644 4016

TM06 7648 4116

3.3 Connecting the outlet hose or pipe

The adapter enables the connection of a hose matching 3/4" or 1" external pipe thread. Cut the adapter so that it matches the hose diameter. You can also connect a pipe directly to the pump.

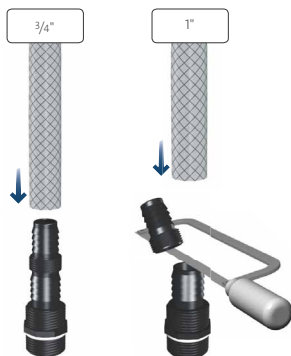


Fig. 3 Adapter

3.4 Non-return valve

Connect the non-return valve to the SB pump. The non-return valve has G 1" threads for connection to the adapter or the pipe.



Fig. 4 Non-return valve

3.5 Pump position

Use the pump in the vertical position as shown in fig. 5.

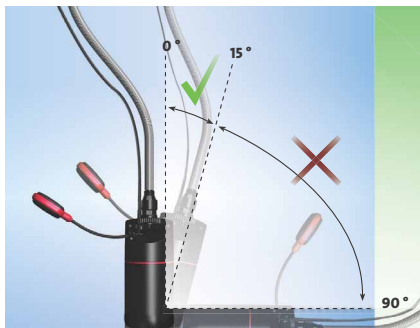


Fig. 5 Pump position

3.6 Mechanical installation

3.6.1 Lifting the product



Do not lift the product by the power supply cable. Lift the product by means of a rope.

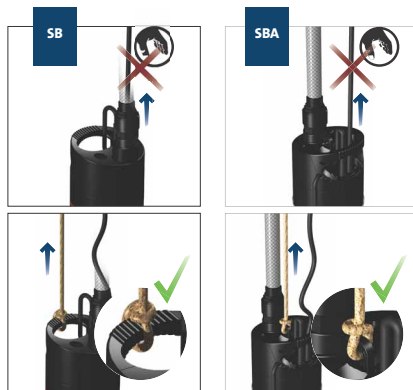


Fig. 6 Lifting the pump

3.7 Electrical connection

⚠ DANGER

Electric shock

Death or serious personal injury

- The protective earth of the socket outlet must be connected to the protective earth of the pump. The plug must therefore have the same PE connection system as that of the socket outlet. If not, use a suitable adapter.



We recommend that you fit the permanent installation with a residual-current circuit breaker, RCCB, with a tripping current less than 30 mA.

⚠ DANGER

Electric shock

Death or serious personal injury

- If the pump is used for cleaning or other maintenance of swimming pools, garden ponds or similar places, make sure that the pump is supplied through a residual-current circuit breaker, RCCB, with a tripping current of 30 mA.



⚠ DANGER

Electric shock

Death or serious personal injury

- Connect pumps that are delivered without cable and/or plugs to an external main switch with a minimum contact gap of 3 mm in all poles.





Make sure that there is at least 3 metres free cable above the liquid level.

Check that the mains voltage and frequency correspond to the values stated on the pump nameplate.

3.7.1 Motor protection

The pump has a built-in thermal switch and requires no additional motor protection.

When the motor has cooled to normal temperature, it restarts automatically.

3.7.2 Connecting to external controller

SB

SB pumps must be connected to an external controller. We recommend a Grundfos Pressure Manager: net.grundfos.com/qr/i/97506325

SBA

SBA pumps have an integrated control unit.

3.7.3 Alternative power supply

The pumps can be powered by a generator or other alternative power supplies, provided that the requirements for the power supply are fulfilled. See section [9. Technical data](#).

3.7.4 Power supply failure

In case of a power supply failure, the pump restarts automatically when power returns and runs for at least 10 seconds.

4. Starting up the product

WARNING

Flammable material



Death or serious personal injury

- Do not use the pump for flammable liquids, such as diesel oil, petrol or similar liquids.

DANGER

Electric shock



Death or serious personal injury

- Do not use the pump in swimming pools, garden ponds or similar places if there are people in the water.

1. Open a tap in the system.
2. Switch on the power supply.
3. Check that the pump is running and water is coming out of the tap.
4. Check that the pump is running and pressure is being built up in the system.
5. Close the tap.
6. Check that pressure has been built up in the system.
7. Check that the pump stops after a few seconds.



Connect SB pumps to an external controller.

4.1 SBA starting and stopping conditions

When water is consumed in the water supply system, the pump starts when the starting conditions are fulfilled. This happens for example when a tap is opened which makes the pressure in the system drop. The control unit stops the pump again when consumption stops, that is when the tap is closed.

Starting conditions

The pump starts when one of the following conditions is fulfilled:

- The flow rate is higher than minimum flow rate.
- The pressure is lower than the start pressure.

Stopping conditions

The pump stops with a time delay of 10 seconds when the flow rate is lower than the minimum flow rate.

The start pressure and minimum flow rate values are shown in section [9. Technical data](#).

5. Handling and storing the product

5.1 Handling the product



Do not lift the product by the power supply cable. Lift the product by means of a rope. Do not drop or shake the product.

5.2 Storing the product

Store the product indoors in a dry and dust-free environment. Protect the product from vibrations. Storage temperature: -10 to +40 °C.

5.3 Frost protection

If the pump is not used during periods of frost, drain the pump and the pipe system before you take the pump out of operation.

6. Product introduction

6.1 Product description

The pumps are submersible booster pumps for pumping clean water. The pumps are especially suitable for rainwater applications and small private wells.

The pumps are available in two main versions:

- with integrated inlet strainer with 1 mm mesh
- with side inlet which includes a flexible inlet hose with floating inlet strainer with 1 mm mesh.

Both versions are available with or without float switch. The float switch can be used for automatic operation or dry-running protection of the pump.

SB pumps must be connected to an external controller. We recommend a Grundfos Pressure Manager: net.grundfos.com/qr/i/97506325

The SBA pump is a complete submersible booster pump. The pump has a built-in control unit, eliminating the need for a controller.

The pump has built-in protection against overheating.

6.2 SBA functions

The built-in control unit incorporates dry-running protection that automatically stops the pump in case of dry running.

The dry-running protection functions differently during priming and operation.

6.2.1 Dry running during priming

If the control unit does not detect any pressure and flow within 5 minutes after it has been connected to a power supply and the pump has started, the dry-running function is activated and the pump stops.

6.2.2 Dry running during operation

If the control unit does not detect any pressure and flow within 40 seconds during normal operation, the dry-running function is activated and the pumps stops.

6.2.3 Resetting of dry-running alarm

If a dry-running alarm has been activated, you can restart the pump manually by switching off the power supply, wait for 2 minutes and reconnecting power. If the control unit does not detect any pressure and flow within 40 seconds after restarting, the dry-running alarm is reactivated.

6.3 Pumped liquids

Mains water and rainwater.

Thin, clean, non-aggressive and non-explosive liquids, not containing solid particles or fibres that may attack the pump mechanically or chemically.

6.4 Identification

6.4.1 Nameplate

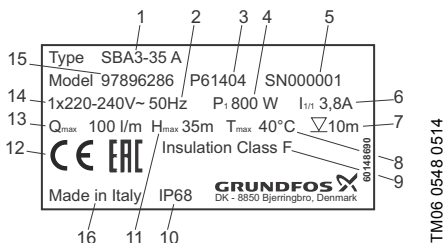


Fig. 7 Example of nameplate

Pos.	Description
1	Product type
2	Frequency [Hz]
3	Production code. The last four digits indicate the year and week of manufacture.
4	Power input [W]
5	Serial number
6	Full-load current [A]
7	Maximum installation depth [m]
8	Maximum liquid temperature [°C]
9	Motor insulation class
10	Enclosure class
11	Maximum head [m]
12	Approval marks
13	Maximum flow rate [l/min.]
14	Supply voltage [V]
15	Product number
16	Country of origin

7. Maintaining the product

DANGER

Electric shock



Death or serious personal injury

- If the power supply cable is damaged, it must be replaced by the manufacturer, his service agent or similarly qualified persons in order to avoid hazard.

Clean the strainer every fall with a brush and a water jet when needed. In normal operation, the pump does not require any specific maintenance.

8. Fault finding the product

DANGER



Electric shock

Death or serious personal injury

- Switch off the power supply before starting any work on the product.

See also the quick guide.

Fault	Cause	Remedy
1. The pump does not run.	a) The fuses in the electrical installation are blown.	Replace the fuses. If the new fuses blow too, check the electrical installation and the power supply cable.
	b) The residual-current circuit breaker, RCCB, has tripped.	Cut in the circuit breaker.
	c) No power supply.	Contact the power supply company.
	d) The motor protection has cut off the power supply due to overload.	<p>Check if the pump is blocked.</p> <ol style="list-style-type: none"> 1. Switch off the power supply to the pump. 2. Remove the rubber plug (25). See figures 1 and 2 on pages 11 and 12. 3. Try to turn the pump shaft with a screwdriver. 4. If the pump shaft is stuck, follow the instructions in point 1, h. <p>Note: Remember to refit the rubber plug (25).</p>
	e) The pump or the power supply cable is defective.	Repair or replace the pump or cable.
	f) The float switch is in dry-running position.	<p>Check the water level and the float switch for free movability.</p> <p>Note: If the tank is empty, and the float switch is often in this position, install a larger tank.</p>
	g) SBA: The dry-running protection of the pump has stopped the pump.	<p>Check the water level.</p> <p>Switch off the power supply and wait 2 minutes before switching it back on.</p>
	h) The pump is blocked.	<p>Check and clean the pump.</p> <ol style="list-style-type: none"> 1. Switch off the power supply to the pump. 2. Remove the eight screws (84b) with a cross-head screwdriver. 3. Remove the pump base (56). See figures 1 and 2 on pages 11 and 12. 4. Clean the inlet strainer and hydraulic parts with a brush and a water jet. 5. Reassemble the pump.

Fault	Cause	Remedy
2. The pump runs but gives no water.	a) The outlet valve is closed.	Open the valve.
	b) No water or too low water level in tank.	Increase the installation depth of the pump. The maximum installation depth is 10 metres. Reduce the pump performance, or replace the pump by a pump with a lower performance.
	c) The non-return valve is stuck in its closed position.	Pull out the pump, and clean or replace the valve.
	d) The inlet strainer is clogged.	Pull out the pump, and clean the inlet strainer with a brush and a water jet.
	e) The pump is defective.	Repair or replace the pump.
3. The pump runs at reduced performance.	a) The valves in the outlet pipe are partly closed or blocked.	Check and clean or replace the valves.
	b) The outlet pipe is partly blocked by impurities.	Clean or replace the pipe.
	c) The non-return valve in the outlet pipe is partly blocked.	Clean or replace the valve.
	d) The pump and outlet pipe are partly blocked by impurities.	Pull out the pump. Check and clean or replace the pump. Clean the pipes.
	e) The inlet strainer is clogged.	Clean the inlet strainer.
	f) The pump is defective.	Repair or replace the pump.
	g) Leakage in the pipework.	Check and repair the pipework.
	h) The outlet pipe is defective.	Replace the outlet pipe.
	i) Undervoltage has occurred.	Check the power supply.
4. Frequent starts and stops.	a) The float switch has not been adjusted correctly.	Adjust the float switch to ensure suitable time between the cutting-in and cutting-out of the pump.
	b) The non-return valve is leaking or stuck half-open.	Clean or replace the non-return valve. See figures 1 and 2 on pages 11 and 12. SB: (149) SBA: (151)
	c) The supply voltage is unstable.	Check the power supply.
	d) The motor temperature is too high.	Check the water temperature.
	e) The pump is blocked.	Check and clean the pump. 1. Switch off the power supply to the pump. 2. Remove the eight screws (84b) with a cross-head screwdriver. 3. Remove the pump base (56). See figures 1 and 2 on pages 11 and 12. 4. Clean the inlet strainer and hydraulic parts with a brush and a water jet. 5. Reassemble the pump.
	f) Leakage in the pipework.	Check and repair the pipework.

9. Technical data

9.1 Operating conditions

9.1.1 Maximum flow rate

SB: 3 m³/h.
SBA: 3 m³/h.

9.1.2 Maximum head

SB 3-25: 25 m.
SB 3-35: 35 m.
SB 3-45: 45 m.
SBA 3-35: 35 m.
SBA 3-45: 45 m.

9.1.3 Liquid temperature

0 to 40 °C.

9.1.4 Start pressure

SBA 3-35: 1.5 bar.
SBA 3-45: 2.2 bar.

9.1.5 Minimum flow rate

SBA 3-35: 1.0 l/min.
SBA 3-45: 1.0 l/min.

9.1.6 Frequency of starts and stops

Maximum 20 starts per hour.

9.2 Mechanical data

9.2.1 Cable length

15 m.

9.2.2 Maximum installation depth

10 m.

9.2.3 Enclosure class

IP68.

9.2.4 Insulation class

F.

9.3 Electrical data

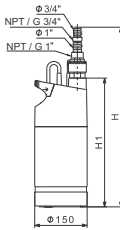
SBA	Voltage [V]	Frequency [Hz]	P1		I _{1/1} [A]
			[kW]	[hp]	
3-35	1 x 230	50	0.80	1.07	3.8
3-45			1.05	1.41	4.8
3-35	1 x 115	60	0.91	1.22	8.6
3-45			1.07	1.43	9.9
3-35	1 x 230	60	0.74	0.99	3.4
3-45			0.90	1.20	4.1

9.3.1 Speed

50 Hz: 2800 min⁻¹.
60 Hz: 3400 min⁻¹.

9.4 Dimensions

Integrated inlet strainer



Floating inlet strainer

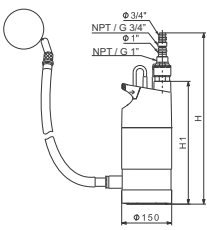
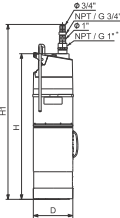


Fig. 8 SB pump with integrated and with floating inlet strainer

Integrated inlet strainer



Floating inlet strainer

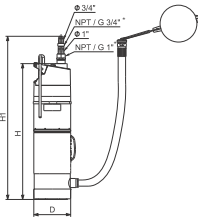


Fig. 9 SBA pump with integrated and with floating inlet strainer

Pump type	H [mm]	H1 [mm]	D [mm]
SB 3-25	537	370	Ø150
SB 3-35	559	392	
SB 3-45	584	417	
SBA 3-35	559	392	
SBA 3-45	584	417	

10. Disposing of the product

This product or parts of it must be disposed of in an environmentally sound way:

1. Use the public or private waste collection service.
2. If this is not possible, contact the nearest Grundfos company or service workshop.

Subject to alterations.

TM04 6243 5109 - TM04 6928 1210

TM05 4804 2712 - TM05 4805 2712

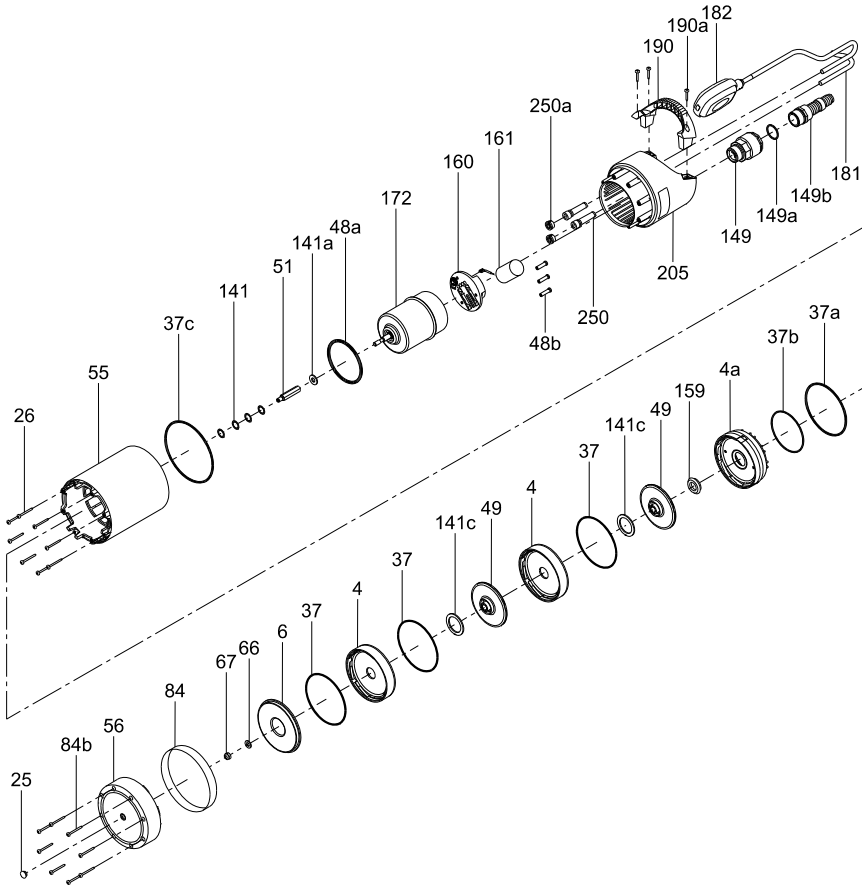


Fig. 1 SB pump

TM04 6209 5109

SBA

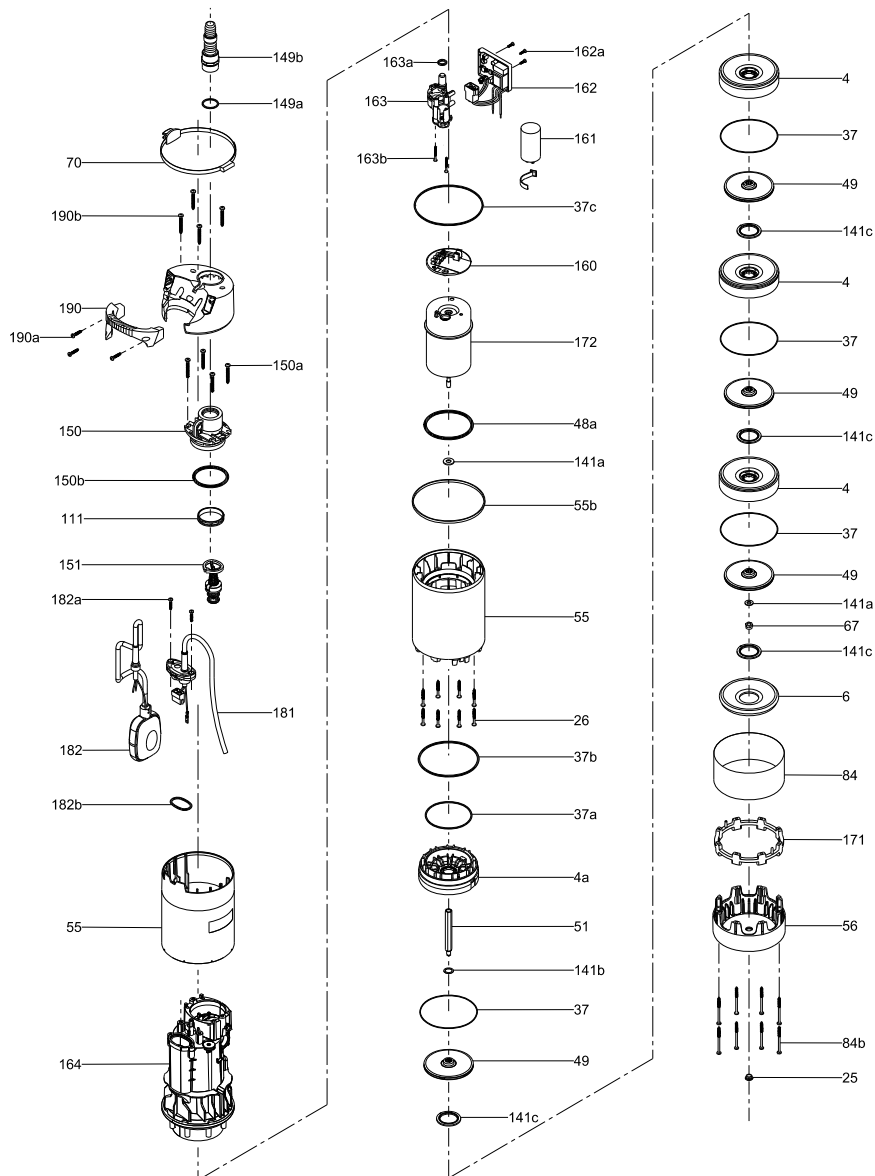


Fig. 2 SBA pump

TM061258 2014

Argentina

Bombas GRUNDFOS de Argentina S.A.
Ruta Panamericana km. 37.500 Centro
Industrial Garin
1619 Garin Pcia. de B.A.
Phone: +54-3327 414 444
Telefax: +54-3327 45 3190

Australia

GRUNDFOS Pumps Pty. Ltd.
P.O. Box 2040
Regency Park
South Australia 5942
Phone: +61-8-8461-4611
Telefax: +61-8-8340 0155

Austria

GRUNDFOS Pumpen Vertrieb
Ges.m.b.H.
Grundfosstraße 2
A-5082 Grödig/Salzburg
Tel.: +43-6246-883-0
Telefax: +43-6246-883-30

Belgium

N.V. GRUNDFOS Bellux S.A.
Boomsesteenweg 81-83
B-2630 Aartselaar
Tél.: +32-3-870 7300
Télécopie: +32-3-870 7301

Belarus

Представительство ГРУНДФОС в
Минске
220125, Минск
ул. Шафарнянская, 11, оф. 56, БЦ
«Порт»
Тел.: +7 (375 17) 286 39 72/73
Факс: +7 (375 17) 286 39 71
E-mail: minsk@grundfos.com

Bosnia and Herzegovina

GRUNDFOS Sarajevo
Zmaj od Bosne 7-7A,
BH-71000 Sarajevo
Phone: +387 33 592 480
Telefax: +387 33 590 465
www.ba.grundfos.com
e-mail: grundfos@bih.net.ba

Brazil

BOMBAS GRUNDFOS DO BRASIL
Av. Humberto de Alencar Castelo
Branco, 630
CEP 09850 - 300
São Bernardo do Campo - SP
Phone: +55-11 4393 5533
Telefax: +55-11 4343 5015

Bulgaria

Grundfos Bulgaria EOOD
Slatina District
Iztocna Tangenta street no. 100
BG - 1592 Sofia
Tel. +359 2 49 22 200
Fax. +359 2 49 22 201
email: bulgaria@grundfos.bg

Canada

GRUNDFOS Canada Inc.
2941 Brighton Road
Oakville, Ontario
L6H 6C9
Phone: +1-905 829 9533
Telefax: +1-905 829 9512

China

GRUNDFOS Pumps (Shanghai) Co. Ltd.
10F The Hub, No. 33 Suhong Road
Minhang District
Shanghai 201106
PRC
Phone: +86 21 612 252 22
Telefax: +86 21 612 253 33

COLOMBIA

GRUNDFOS Colombia S.A.S.
Km 1.5 vía Siberia-Cota Conj. Potrero
Chico,
Parque Empresarial Arcos de Cota Bod.
1A.
Cota, Cundinamarca
Phone: +57(1)-2913444
Telefax: +57(1)-8764586

Croatia

GRUNDFOS CROATIA d.o.o.
Buzinski prilaz 38, Buzin
HR-10010 Zagreb
Phone: +385 1 6595 400
Telefax: +385 1 6595 499
www.hr.grundfos.com

GRUNDFOS Sales Czechia and Slovakia s.r.o.

Čajkovského 21
779 00 Olomouc
Phone: +420-585-716 111

Denmark

GRUNDFOS DK A/S
Martin Bachs Vej 3
DK-8850 Bjerringbro
Tlf.: +45-87 50 50 50
Telefax: +45-87 50 51 51
E-mail: info_GDK@grundfos.com
www.grundfos.com/DK

Estonia

GRUNDFOS Pumps Eesti OÜ
Peterburi tee 92G
11415 Tallinn
Tel.: + 372 606 1690
Fax: + 372 606 1691

Finland

OY GRUNDFOS Pumput AB
Trukkikuja 1
FI-01360 Vantaa
Phone: +358-(0) 207 889 500

France

Pompes GRUNDFOS Distribution S.A.
Parc d'Activités de Chesnes
57, rue de Malacombe
F-38290 St. Quentin Fallavier (Lyon)
Tél.: +33-4 74 82 15 15
Télécopie: +33-4 74 94 10 51

Germany

GRUNDFOS GMBH
Schlüterstr. 33
40699 Erkrath
Tel.: +49-(0) 211 929 69-0
Telefax: +49-(0) 211 929 69-3799
e-mail: infoservice@grundfos.de
Service in Deutschland:
e-mail: kundendienst@grundfos.de

Greece

GRUNDFOS Hellas A.E.B.E.
20th km. Athinon-Markopoulou Av.
P.O. Box 71
GR-19002 Peania
Phone: +0030-210-66 83 400
Telefax: +0030-210-66 46 273

Hong Kong

GRUNDFOS Pumps (Hong Kong) Ltd.
Unit 1, Ground floor
Siu Wai Industrial Centre
29-33 Wing Hong Street &
68 King Lam Street, Cheung Sha Wan
Kowloon
Phone: +852-27861706 / 27861741
Telefax: +852-27858664

Hungary

GRUNDFOS Hungária Kft.
Park u. 8
H-2045 Törökbálint,
Phone: +36-23 511 110
Telefax: +36-23 511 111

India

GRUNDFOS Pumps India Private
Limited
118 Old Mahabalipuram Road
Thoraipakkam
Chennai 600 096
Phone: +91-44 2496 6800

Indonesia

PT. GRUNDFOS POMPA
Graha Intirub Lt. 2 & 3
Jln. Cililitan Besar No.454. Makasar,
Jakarta Timur
ID-Jakarta 13650
Phone: +62 21-469-51900
Telefax: +62 21-460 6910 / 460 6901

Ireland

GRUNDFOS (Ireland) Ltd.
Unit A, Merrywell Business Park
Ballymount Road Lower
Dublin 12
Phone: +353-1-4089 800
Telefax: +353-1-4089 830

Italy

GRUNDFOS Pompe Italia S.r.l.
Via Gran Sasso 4
I-20060 Truccazzano (Milano)
Tel.: +39-02-95838112
Telefax: +39-02-95309290 / 95838461

Japan

GRUNDFOS Pumps K.K.
1-2-3, Shin-Miyakoda, Kita-ku,
Hamamatsu
431-2103 Japan
Phone: +81 53 428 4760
Telefax: +81 53 428 5005

Korea

GRUNDFOS Pumps Korea Ltd.
6th Floor, Aju Building 679-5
Yeoksam-dong, Kangnam-ku, 135-916
Seoul, Korea
Phone: +82-2-5317 600
Telefax: +82-2-5633 725

Latvia

SIA GRUNDFOS Pumps Latvia
Deglava biznesa centrs
Augusta Deglava ielā 60, LV-1035, Rīga,
Tālr.: + 371 714 9640, 7 149 641
Fakss: + 371 914 9646

Lithuania

GRUNDFOS Pumps UAB
Smolensko g. 6
LT-03201 Vilnius
Tel: + 370 52 395 430
Fax: + 370 52 395 431

Malaysia

GRUNDFOS Pumps Sdn. Bhd.
7 Jalan Peguam U1/25
Glenmarie Industrial Park
40150 Shah Alam
Selangor
Phone: +60-3-5569 2922
Telefax: +60-3-5569 2866

Mexico

Bombas GRUNDFOS de México S.A. de C.V.
Boulevard TLC No. 15
Parque Industrial Stiva Aeropuerto
Apodaca, N.L. 66600
Phone: +52-81-8144 4000
Telefax: +52-81-8144 4010

Netherlands

GRUNDFOS Netherlands
Veluwezoom 35
1326 AE Almere
Postbus 22015
1302 CA ALMERE
Tel.: +31-88-478 6336
Telefax: +31-88-478 6332
E-mail: info_gnl@grundfos.com

New Zealand

GRUNDFOS Pumps NZ Ltd.
17 Beatrice Tinsley Crescent
North Harbour Industrial Estate
Albany, Auckland
Phone: +64-9-415 3240
Telefax: +64-9-415 3250

Norway

GRUNDFOS Pumper A/S
Strømsveien 344
Postboks 235, Leirdal
N-1011 Oslo
Tlf.: +47-22 90 47 00
Telefax: +47-22 32 21 50

Poland

GRUNDFOS Pompy Sp. z o.o.
ul. Klonowa 23
Baranowo k. Poznań
PL-62-081 Przeźmierowo
Tel: (+48-61) 650 13 00
Fax: (+48-61) 650 13 50

Portugal

Bombas GRUNDFOS Portugal, S.A.
Rua Calvet de Magalhães, 241
Apartado 1079
P-2770-153 Paço de Arcos
Tel.: +351-21-440 76 00
Telefax: +351-21-440 76 90

Romania

GRUNDFOS Pompe România SRL
Bd. Biruintei, nr 103
Pantelimon county Ilfov
Phone: +40 21 200 4100
Telefax: +40 21 200 4101
E-mail: romania@grundfos.ro

Russia

ООО Грундфос Россия
109544, г. Москва, ул. Школьная, 39-41, стр. 1
Тел. (+7) 495 564-88-00 (495) 737-30-00
Факс (+7) 495 564 88 11
E-mail grundfos.moscow@grundfos.com

Serbia

Grundfos Srbija d.o.o.
Omladinskih brigada 90b
11070 Novi Beograd
Phone: +381 11 2258 740
Telefax: +381 11 2281 769
www.rs.grundfos.com

Singapore

GRUNDFOS (Singapore) Pte. Ltd.
25 Jalan Tukang
Singapore 619264
Phone: +65-6681 9688
Telefax: +65-6681 9689

Slovakia

GRUNDFOS s.r.o.
Prievozská 4D
821 09 BRATISLAVA
Phona: +421 2 5020 1426
sk.grundfos.com

Slovenia

GRUNDFOS LJUBLJANA, d.o.o.
Leskoškova 9e, 1122 Ljubljana
Phone: +386 (0) 1 568 06 10
Telefax: +386 (0) 1 568 06 19
E-mail: tehnika-si@grundfos.com

South Africa

GRUNDFOS (PTY) LTD
Corner Mountjoy and George Allen
Roads
Wilbart Ext. 2
Bedfordview 2008
Phone: (+27) 11 579 4800
Fax: (+27) 11 455 6066
E-mail: lsmart@grundfos.com

Spain

Bombas GRUNDFOS España S.A.
Camino de la Fuenteclilla, s/n
E-28110 Algete (Madrid)
Tel.: +34-91-848 8800
Telefax: +34-91-628 0465

Sweden

GRUNDFOS AB
Box 333 (Lunnagårdsgatan 6)
431 24 Mölndal
Tel.: +46 31 332 23 000
Telefax: +46 31 331 94 60

Switzerland

GRUNDFOS Pumpen AG
Bruggacherstrasse 10
CH-8117 Fällanden/ZH
Tel.: +41-44-806 8111
Telefax: +41-44-806 8115

Taiwan

GRUNDFOS Pumps (Taiwan) Ltd.
7 Floor, 219 Min-Chuan Road
Taichung, Taiwan, R.O.C.
Phone: +886-4-2305 0868
Telefax: +886-4-2305 0878

Thailand

GRUNDFOS (Thailand) Ltd.
92 Chaloe Phrakiat Rama 9 Road,
Dokmai, Pravej, Bangkok 10250
Phone: +66-2-725 8999
Telefax: +66-2-725 8998

Turkey

GRUNDFOS POMPA San. ve Tic. Ltd. Sti.
Gebze Organize Sanayi Bölgesi
İhsan dede Caddesi,
2. yol 200. Sokak No. 204
41490 Gebze/ Kocaeli
Phone: +90 - 262-679 7979
Telefax: +90 - 262-679 7905
E-mail: satis@grundfos.com

Ukraine

Бізнес Центр Європа
Столичне шосе, 103
м. Київ, 03131, Україна
Телефон: (+38 044) 237 04 00
Факс.: (+38 044) 237 04 01
E-mail: ukraine@grundfos.com

United Arab Emirates

GRUNDFOS Gulf Distribution
P.O. Box 16768
Jebel Ali Free Zone
Dubai
Phone: +971 4 8815 166
Telefax: +971 4 8815 136

United Kingdom

GRUNDFOS Pumps Ltd.
Grovebury Road
Leighton Buzzard/Beds. LU7 4TL
Phone: +44-1525-850000
Telefax: +44-1525-850011

U.S.A.

GRUNDFOS Pumps Corporation
17100 West 118th Terrace
Olathe, Kansas 66061
Phone: +1-913-227-3400
Telefax: +1-913-227-3500

Uzbekistan

Grundfos Tashkent, Uzbekistan The
Representative Office of Grundfos
Kazakhstan in Uzbekistan
38a, Oybek street, Tashkent
Телефон: (+998) 71 150 3290 / 71 150 3291
Факс: (+998) 71 150 3292

Addresses Revised 05.12.2016

99057358 0117
ECM: 1200120

The name Grundfos, the Grundfos logo, and **be think innovate** are registered trademarks owned by Grundfos Holding A/S or Grundfos A/S, Denmark. All rights reserved worldwide.

© Copyright Grundfos Holding A/S