

Tender Text



Note! Product picture may differ from actual product

Product No.: [97896333](#)

SBA 3-45 A

The SBA is a complete all-in-one submersible booster pump for pumping clean water, it is especially suitable for rainwater application and small private wells. The SBA comes with an integrated control unit, eliminating the need for an external pump controller.

With SBA it is literally a matter of "plug and pump". Once installed and connected to the piping; all you need to do is switch on the pump. The result is a reliable solution and greatly reduced installation costs.

The pump is available in two main versions:

With integrated suction strainer (1 mm mesh)

Or with side inlet/flexible suction hose with floating suction strainer (1 mm mesh).

Both variants are available with or without float switch, the float switch offers stop at low water level ensuring that surface fragments do not enter the strainer.

Liquid:

Liquid temperature range: 0 .. 40 °C

Technical:

Rated flow: 2.93 m³/h
Rated head: 30 m
Impeller nom: 98 mm
Type of impeller: CLOSED
Maximum particle size: 1 mm
Approvals and markings: 3
Curve tolerance: ISO9906:2012 3B
Start pressure: Automatic

Materials:

Pump housing: PP30GF
Impeller: PPO20GF

Installation:

Maximum ambient temperature: 50 °C
Pump outlet: NPT 1"
Maximum installation depth: 10 m
Type of suction: STRAINER

Electrical data:

Rated power - P2: 0.97 kW
Mains frequency: 60 Hz
Rated voltage: 1 x 110-120 V
Rated current: 9.9 A
Starting current: 26 A



Company name:

Created by:

Phone:


Date:

21/02/2018

Cos phi: 0,944
Rated speed: 3400 rpm
Capacitor size - run: 30 μ F/250 V
Enclosure class (IEC 34-5): IP68
Insulation class (IEC 85): F
Length of cable: 13.7 m
Cable type: SJTWA 3AWG18
Type of cable plug: NEMA 5-15P

Others:

Net weight: 9.27 kg
Gross weight: 10.2 kg
Shipping volume: 0.022 m³

Position	Qty.	Description
	1	<p>SBA 3-45 A</p>  <p>Note! Product picture may differ from actual product</p> <p>Product No.: 97896333</p> <p>The SBA is a complete all-in-one submersible booster pump for pumping clean water, it is especially suitable for rainwater application and small private wells. The SBA comes with an integrate control unit, eliminating the need for an external pump controller.</p> <p>With SBA it is literally a matter of "plug and pump". Once installed and connected to the piping; all you need to do is switch on the pump. The result is a reliable solution and greatly reduced installation costs.</p> <p>The pump is available in two main versions: With integrated suction strainer (1 mm mesh) Or with side inlet/flexible suction hose with floating suction strainer (1 mm mesh). Both variants are available with or without float switch, the float switch offers stop at low water level ensuring that surface fragments do not enter the strainer.</p> <p>Liquid: Liquid temperature range: 0 .. 40 °C</p> <p>Technical: Rated flow: 2.93 m³/h Rated head: 30 m Impeller nom: 98 mm Type of impeller: CLOSED Maximum particle size: 1 mm Approvals and markings: 3 Curve tolerance: ISO9906:2012 3B Start pressure: Automatic</p> <p>Materials: Pump housing: PP30GF Impeller: PPO20GF</p> <p>Installation: Maximum ambient temperature: 50 °C Pump outlet: NPT 1" Maximum installation depth: 10 m Type of suction: STRAINER</p> <p>Electrical data: Rated power - P2: 0.97 kW Mains frequency: 60 Hz Rated voltage: 1 x 110-120 V Rated current: 9.9 A Starting current: 26 A Cos phi: 0,944</p>



Company name:

Created by:

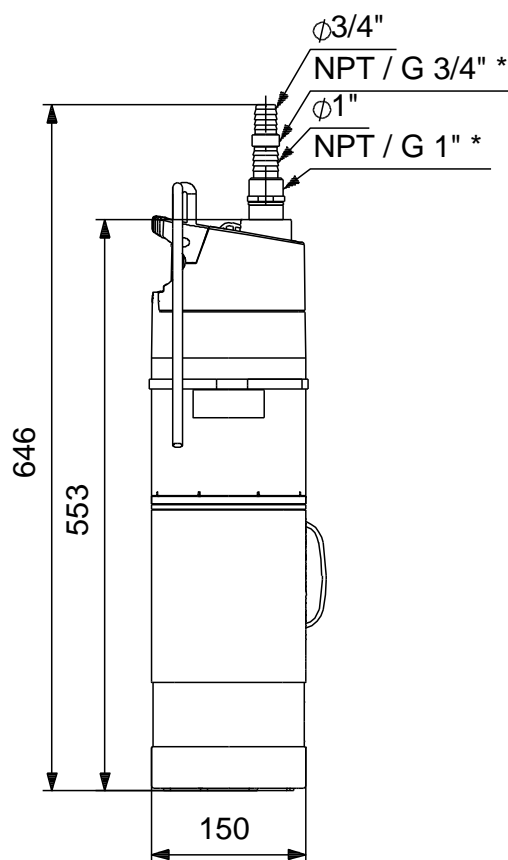
Phone:

Date:

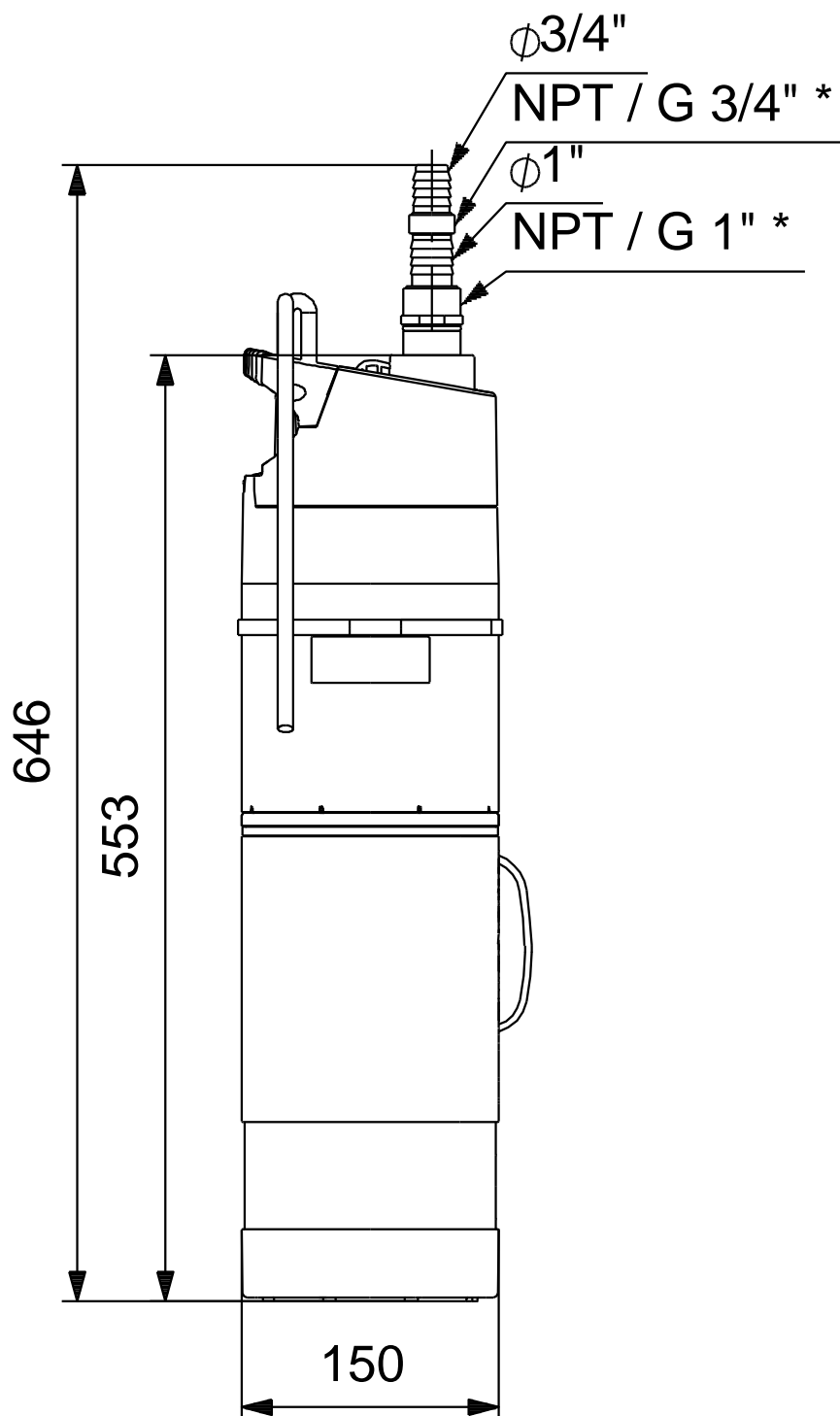
21/02/2018

Position	Qty.	Description
		<div>Rated speed: 3400 rpm</div> <div>Capacitor size - run: 30 μF/250 V</div> <div>Enclosure class (IEC 34-5): IP68</div> <div>Insulation class (IEC 85): F</div> <div>Length of cable: 13.7 m</div> <div>Cable type: SJTWA 3AWG18</div> <div>Type of cable plug: NEMA 5-15P</div> <div>Others:</div> <div>Net weight: 9.27 kg</div> <div>Gross weight: 10.2 kg</div> <div>Shipping volume: 0.022 m³</div>

Description	Value
General information:	
Product name:	SBA 3-45 A
Product No:	97896333
EAN number:	5710626001989
Technical:	
Rated flow:	2.93 m³/h
Rated head:	30 m
Impeller nom:	98 mm
Type of impeller:	CLOSED
Impellers:	3
Maximum particle size:	1 mm
Approvals and markings:	3
Curve tolerance:	ISO9906:2012 3B
Start pressure:	Automatic
Materials:	
Pump housing:	PP30GF
Impeller:	PPO20GF
Installation:	
Maximum ambient temperature:	50 °C
Pump outlet:	NPT 1"
Maximum installation depth:	10 m
Type of suction:	STRAINER
Liquid:	
Liquid temperature range:	0 .. 40 °C
pH-value range:	4-9
Electrical data:	
Rated power - P2:	0.97 kW
Mains frequency:	60 Hz
Rated voltage:	1 x 110-120 V
Rated current:	9.9 A
Starting current:	26 A
Cos phi:	0,944
Rated speed:	3400 rpm
Capacitor size - run:	30 µF/250 V
Enclosure class (IEC 34-5):	IP68
Insulation class (IEC 85):	F
Motor protec:	YES
Length of cable:	13.7 m
Cable type:	SJTWA 3AWG18
Type of cable plug:	NEMA 5-15P
Controls:	
Flow switch:	yes
Others:	
Net weight:	9.27 kg
Gross weight:	10.2 kg
Shipping volume:	0.022 m³



97896333 SBA 3-45 A 60 Hz



Note! All units are in [mm] unless others are stated.
Disclaimer: This simplified dimensional drawing does not show all details.



Company name:

Created by:

Phone:

Date:

21/02/2018

Order Data:

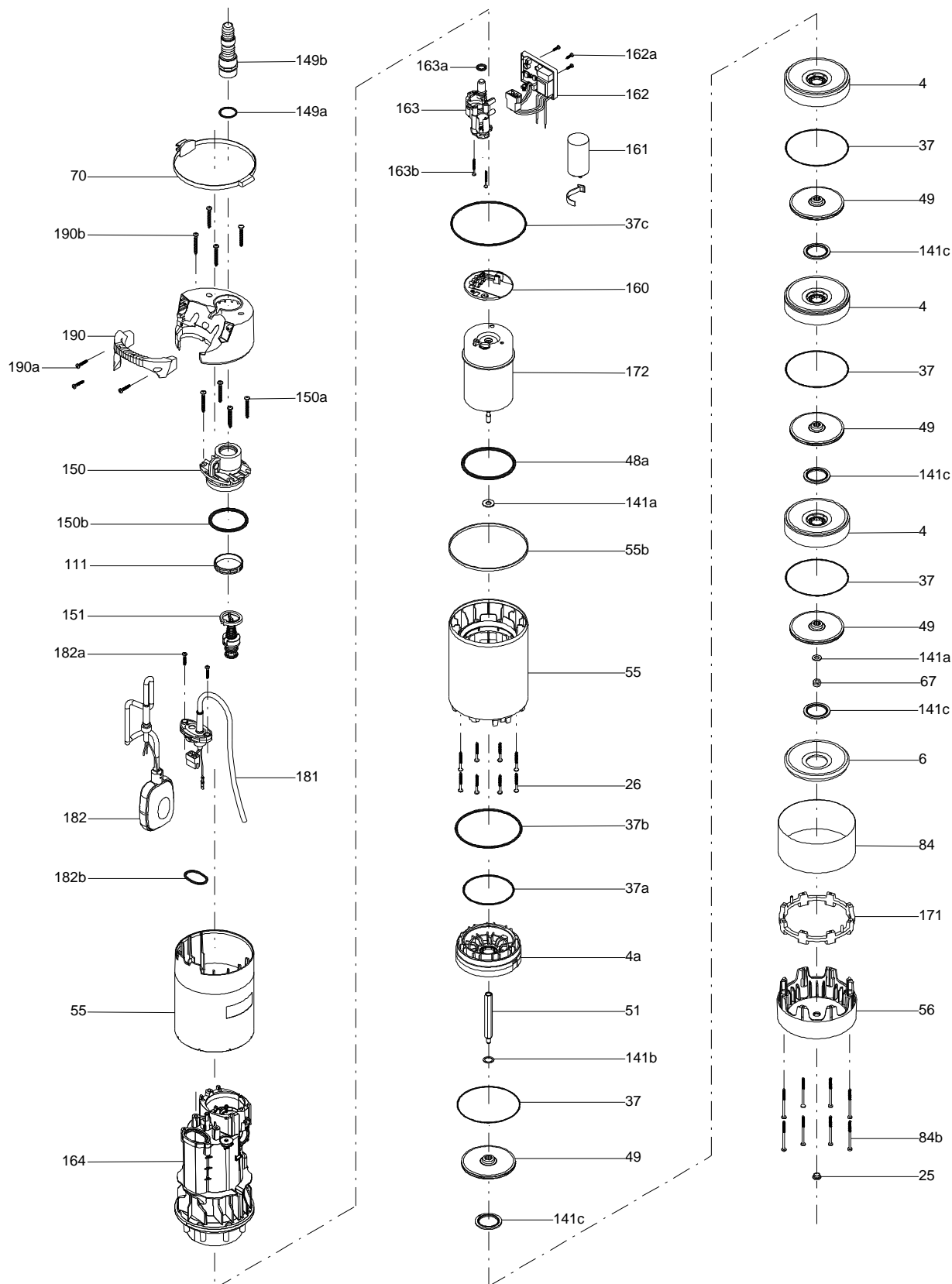
Product name: SBA 3-45 A

Amount: 1

Product No: 97896333

Total: Price on request

Exploded view (TM061258 for SBA)





Company name:

Created by:

Phone:

Date:

21/02/2018

Spare parts SBA 3-45 A, Product No. 97896333

Valid from 15.8.2013 (1333)

Pos	Description	Annotation	Classification Data	Part no.	Qty.	Unit
-	Bulk, discharge connection			98679440	1	pcs
149b	Discharge				10	
-	Kit, cable			98679489	1	pcs
181	Cable				1	
182b	O-ring				1	
182a	Pan head screw				2	
-	Kit, cable w/float switch			98679515	1	pcs
181	Cable				1	
182b	O-ring				1	
182a	Pan head screw				2	
-	Kit, impeller			98244818	1	pcs
4a	Support				1	
4	Diffuser				3	
6	Diffuser				1	
49	Impeller cpl.				4	
141c	Spare, O-ring				4	
	Kit, motor			99116557	1	pcs
-	Kit, non-return valve			98679516	1	pcs
111	Filter sand				1	
151	Non-return valve				1	
	Kit, pressure switch			99185471	1	pcs
-	Spare, discharge connection			98679477	1	pcs
149b	Discharge				1	