

| | | |
|-----------------------|------------------------|-----------------|
| PROJECT: _____ | UNIT TAG: _____ | QUANTITY: _____ |
| REPRESENTATIVE: _____ | TYPE OF SERVICE: _____ | DATE: _____ |
| ENGINEER: _____ | SUBMITTED BY: _____ | DATE: _____ |
| CONTRACTOR: _____ | APPROVED BY: _____ | DATE: _____ |
| | ORDER NO.: _____ | DATE: _____ |

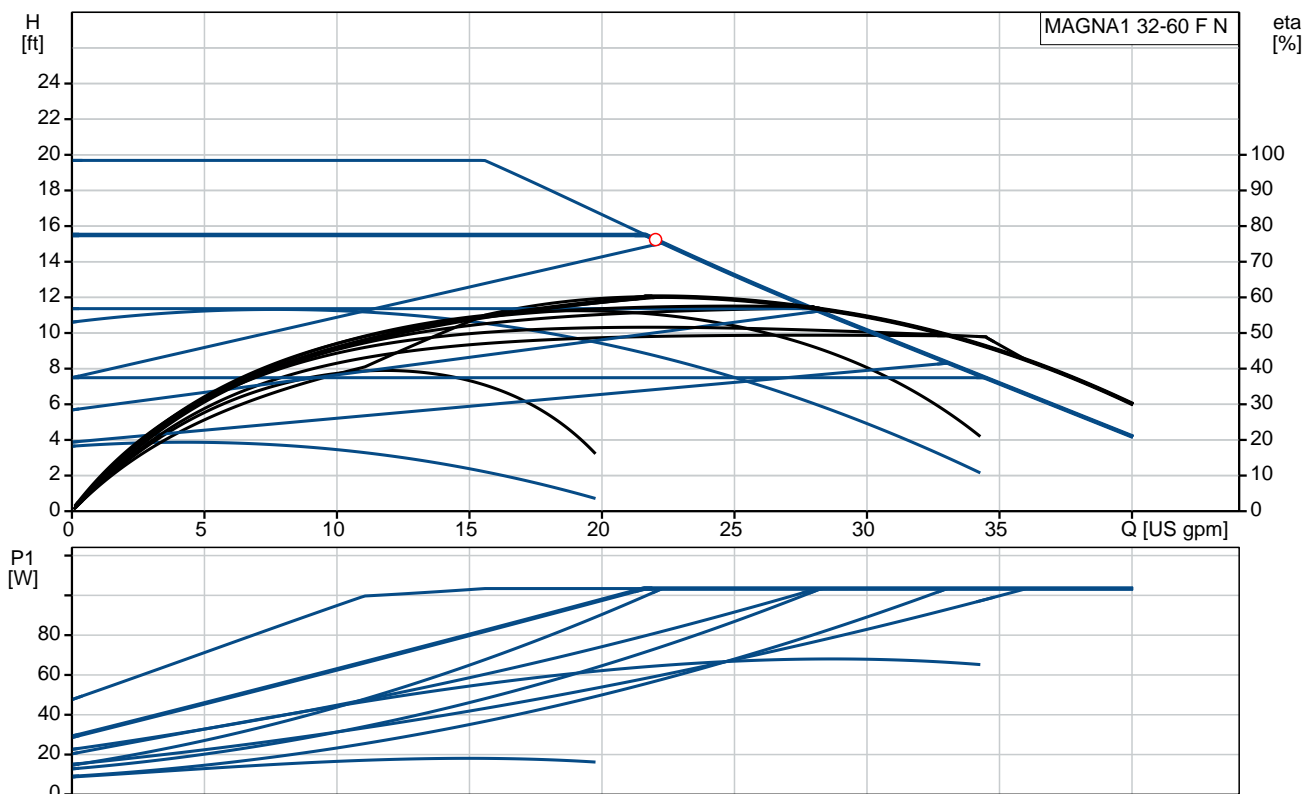
MAGNA1 32-60 F N

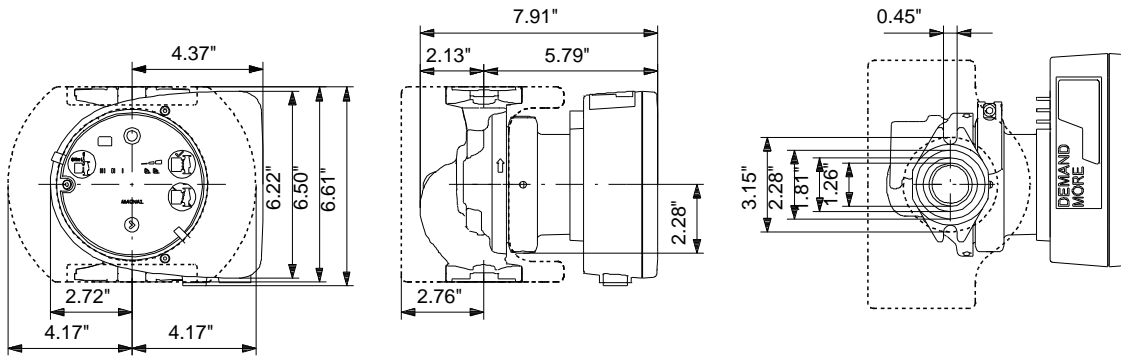


Full range of intelligent, high-efficiency circulators for heating, cooling, ground source heat pump systems and domestic hot water applications

Product photo could vary from the actual product

| Conditions of Service | Pump Data | Motor Data |
|-------------------------|--|--------------------------|
| Flow: _____ | Maximum operating pressure: 174 psi | P1 max: 8.71 .. 107 W |
| Head: _____ | Liquid temperature range: 14 .. 230 °F | Rated voltage: 115-230 V |
| Efficiency: _____ | Maximum ambient temperature: 104 °F | Main frequency: 60 Hz |
| Liquid: Water | Approvals: 98544606 | Enclosure class: X4D |
| Temperature: 140 °F | Flange standard: GF | Insulation class: F |
| NPSH required: ft | Pipe connection: GF15/26/40/43 | |
| Viscosity: _____ | Product number: 98126821 | |
| Specific Gravity: 0.985 | | |





Materials:

Pump housing: Stainless steel
 EN 1.4308
 ASTM 351 CF8
 Impeller: PES 30%GF

Tender Text



Product photo could vary from the actual product

Product No.: [98126821](#)

MAGNA1 32-60 F N

MAGNA1 circulator pump with easy selection of pump setting

The pump is of the canned-rotor type, i.e. pump and motor form an integral unit without shaft seal and with only two gaskets for sealing.

The bearings are lubricated by the pumped liquid.

In order to avoid problems in connection with disposal, great importance has been attached to using as few different materials as possible.

A pump with no maintenance requirements and extremely low life cycle cost.

Heating systems

- Main pump
- mixing loops
- heating surfaces
- air-conditioning surfaces.

The MAGNA1 circulator pumps are designed for circulating liquids in heating systems with variable flows where it is desirable to optimize the setting of the pump duty point, thus reducing energy costs. The pumps are also suitable for domestic hot-water systems.

To ensure correct operation, it is important that the sizing range of the system falls within the duty range of the pump.

The pump is also suitable for systems with hot-water priority as an external signal can

immediately force the pump to operate according to the max. curve, for example in solar-heating systems.

Benefits

- Safe selection.
- Simple installation.
- Low energy consumption. All MAGNA1 pumps comply with the EuP requirements.
- Nine light fields for indication of pump setting. Three proportional-pressure curves, three constant-pressure curves and three fixed-speed curves are available.
- Low noise level.
- No maintenance and long life.

Liquid:

Pumped liquid: Water
Liquid temperature range: 14 .. 230 °F
Liquid temperature during operation: 140 °F
Density: 61.35 lb/ft³

Technical:

TF class: 110
Approvals on nameplate: 98544606

Materials:

Pump housing: Stainless steel
EN 1.4308
ASTM 351 CF8
Impeller: PES 30%GF

Installation:


Range of ambient temperature: 32 .. 104 °F
Maximum operating pressure: 174 psi
Flange standard: GF
Pipe connection: GF15/26/40/43
Pressure stage: PN12
Port-to-port length: 6 1/2 in

Electrical data:

Power input - P1: 8.71 .. 107 W
Main frequency: 60 Hz
Rated voltage: 1 x 115-230 V
Maximum current consumption: 0.28 .. 1.01 A
Enclosure class (IEC 34-5): X4D
Insulation class (IEC 85): F

Others:

Energy (EEI): 0.20
Net weight: 11 lb
Gross weight: 13.2 lb
Shipping volume: 345 ft³

| Position | Count | Description |
|----------|-------|--|
| | 1 | <p data-bbox="341 338 571 365">MAGNA1 32-60 F N</p> <div data-bbox="365 450 699 714" style="text-align: center;">  </div> <p data-bbox="732 770 1190 792" style="text-align: center;">Product photo could vary from the actual product</p> <p data-bbox="341 801 608 824">Product No.: 98126821</p> <p data-bbox="341 862 1458 1064"> MAGNA1 circulator pump with easy selection of pump setting The pump is of the canned-rotor type, i.e. pump and motor form an integral unit without shaft seal and with only two gaskets for sealing. The bearings are lubricated by the pumped liquid. In order to avoid problems in connection with disposal, great importance has been attached to using as few different materials as possible. A pump with no maintenance requirements and extremely low life cycle cost. </p> <p data-bbox="341 1099 528 1122">Heating systems</p> <ul data-bbox="341 1128 635 1240" style="list-style-type: none"> • Main pump • mixing loops • heating surfaces • air-conditioning surfaces. <p data-bbox="341 1247 1458 1350"> The MAGNA1 circulator pumps are designed for circulating liquids in heating systems with variable flows where it is desirable to optimize the setting of the pump duty point, thus reducing energy costs. The pumps are also suitable for domestic hot-water systems. </p> <p data-bbox="341 1359 1410 1413"> To ensure correct operation, it is important that the sizing range of the system falls within the duty range of the pump. </p> <p data-bbox="341 1420 1399 1532"> The pump is also suitable for systems with hot-water priority as an external signal can immediately force the pump to operate according to the max. curve, for example in solar-heating systems. </p> <p data-bbox="341 1568 435 1590">Benefits</p> <ul data-bbox="341 1597 1323 1798" style="list-style-type: none"> • Safe selection. • Simple installation. • Low energy consumption. All MAGNA1 pumps comply with the EuP requirements. • Nine light fields for indication of pump setting. Three proportional-pressure curves, three constant-pressure curves and three fixed-speed curves are available. • Low noise level. • No maintenance and long life. <p data-bbox="341 1834 427 1856">Liquid:</p> <p data-bbox="341 1863 836 1975"> Pumped liquid: Water Liquid temperature range: 14 .. 230 °F Liquid temperature during operation: 140 °F Density: 61.35 lb/ft³ </p> <p data-bbox="341 2011 467 2033">Technical:</p> <p data-bbox="341 2040 820 2094"> TF class: 110 Approvals on nameplate: 98544606 </p> |



Company name:

Created by:

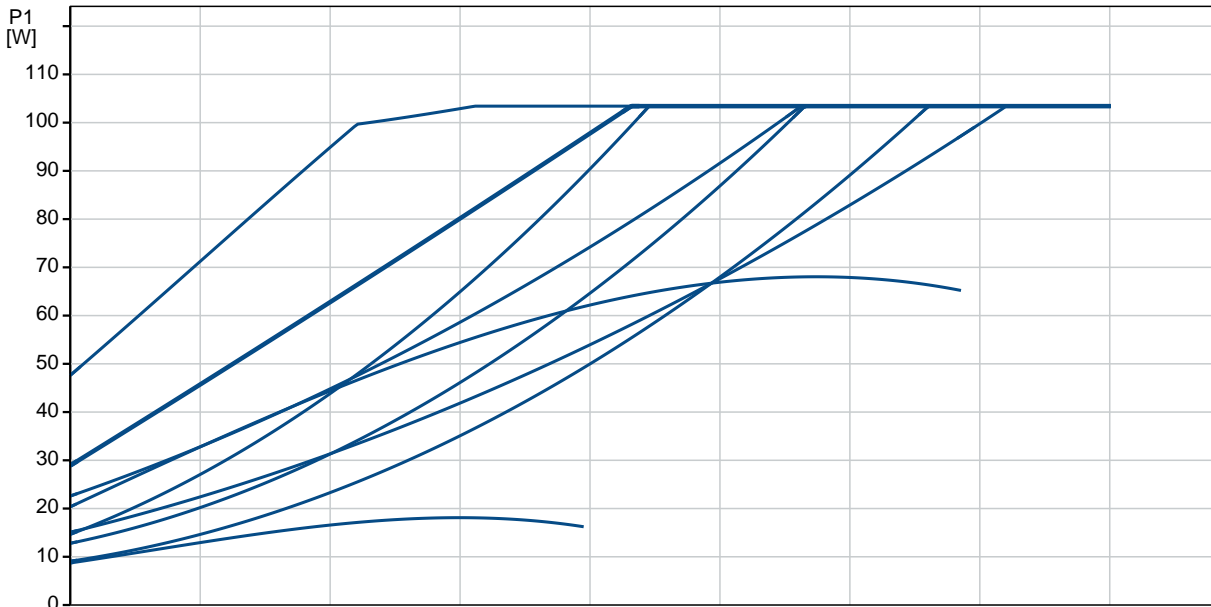
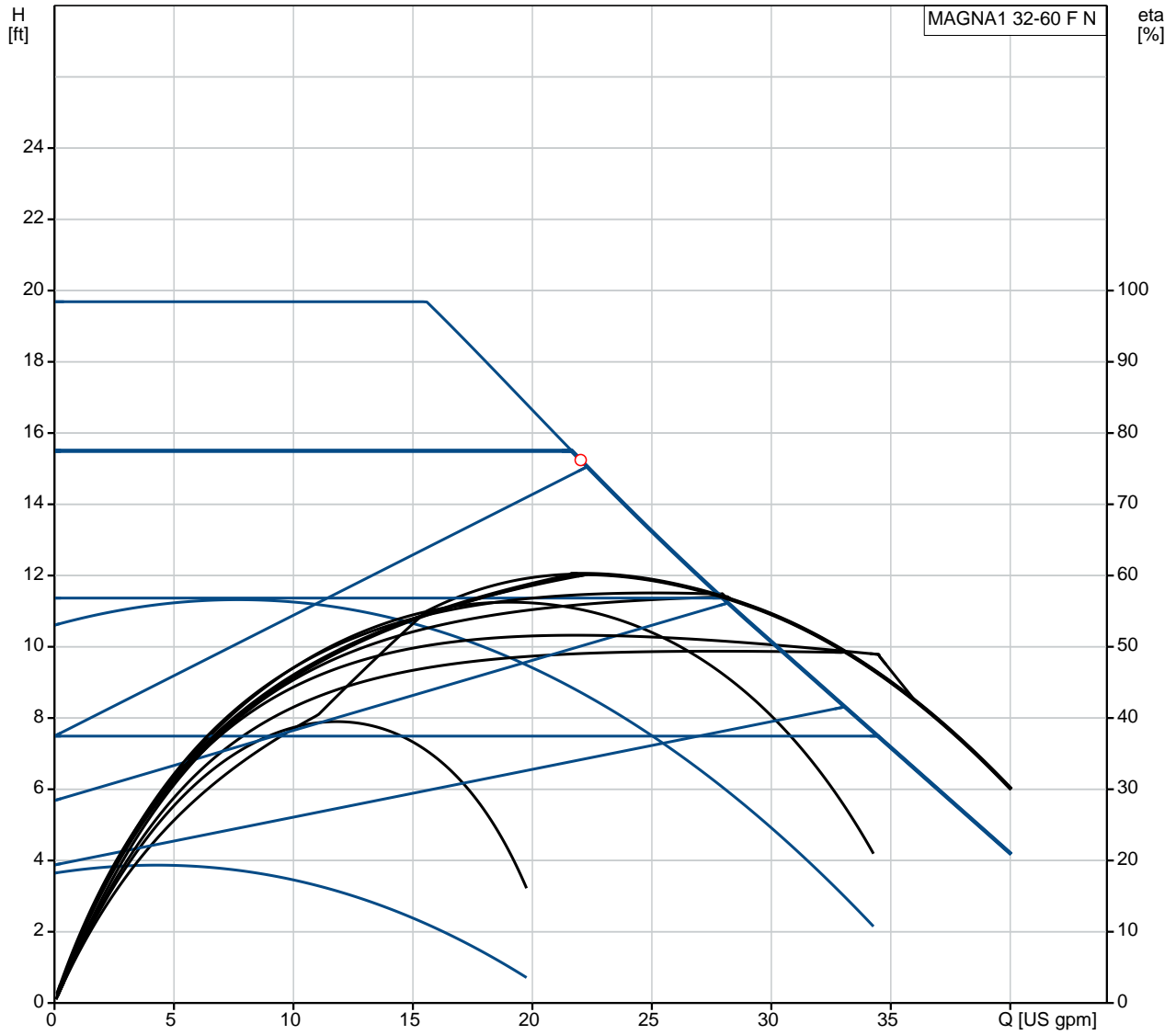
Phone:

Date:

2/21/2018

| Position | Count | Description |
|----------|-------|---|
| | | <p>Materials:</p> <p>Pump housing: Stainless steel EN 1.4308 ASTM 351 CF8</p> <p>Impeller: PES 30%GF</p> <p>Installation:</p> <p>Range of ambient temperature: 32 .. 104 °F Maximum operating pressure: 174 psi Flange standard: GF Pipe connection: GF15/26/40/43 Pressure stage: PN12 Port-to-port length: 6 1/2 in</p> <p>Electrical data:</p> <p>Power input - P1: 8.71 .. 107 W Main frequency: 60 Hz Rated voltage: 1 x 115-230 V Maximum current consumption: 0.28 .. 1.01 A Enclosure class (IEC 34-5): X4D Insulation class (IEC 85): F</p> <p>Others:</p> <p>Energy (EEI): 0.20 Net weight: 11 lb Gross weight: 13.2 lb Shipping volume: 345 ft³</p> |

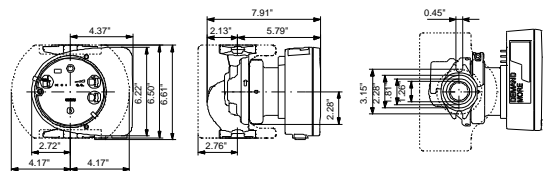
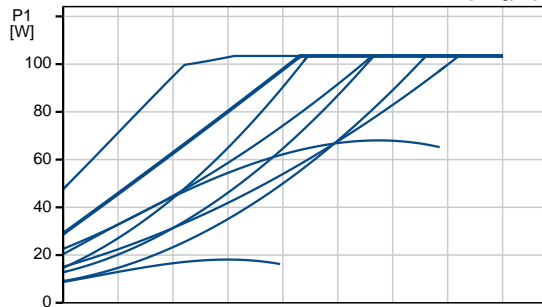
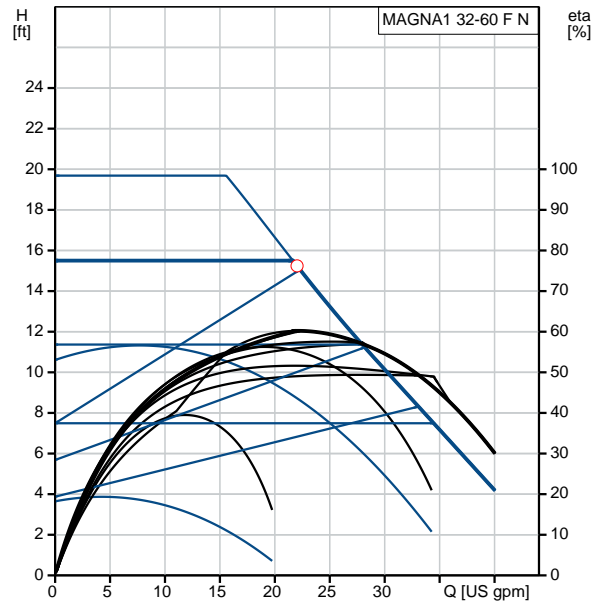
98126821 MAGNA1 32-60 F N 60 Hz



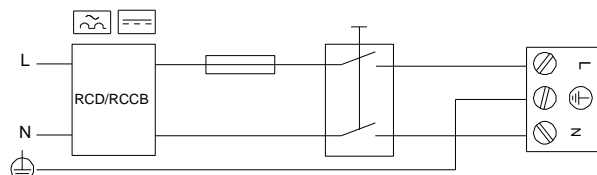
| Description | Value |
|--------------------------------------|--|
| General information: | |
| Product name: | MAGNA1 32-60 F N |
| Product No.: | 98126821 |
| EAN: | 5710629499837 |
| Technical: | |
| Head max: | 19.69 ft |
| TF class: | 110 |
| Approvals on nameplate: | 98544606 |
| Model: | B |
| Materials: | |
| Pump housing: | Stainless steel EN 1.4308 ASTM 351 CF8 |
| Impeller: | PES 30%GF |
| Installation: | |
| Range of ambient temperature: | 32 .. 104 °F |
| Maximum operating pressure: | 174 psi |
| Flange standard: | GF |
| Pipe connection: | GF15/26/40/43 |
| Pressure stage: | PN12 |
| Port-to-port length: | 6 1/2 in |
| Liquid: | |
| Pumped liquid: | Water |
| Liquid temperature range: | 14 .. 230 °F |
| Liquid temperature during operation: | 140 °F |
| Density: | 61.35 lb/ft ³ |

| | |
|------------------------------|----------------|
| Electrical data: | |
| Power input - P1: | 8.71 .. 107 W |
| Main frequency: | 60 Hz |
| Rated voltage: | 1 x 115-230 V |
| Maximum current consumption: | 0.28 .. 1.01 A |
| Enclosure class (IEC 34-5): | X4D |
| Insulation class (IEC 85): | F |

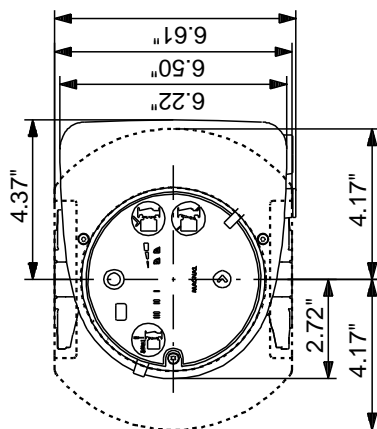
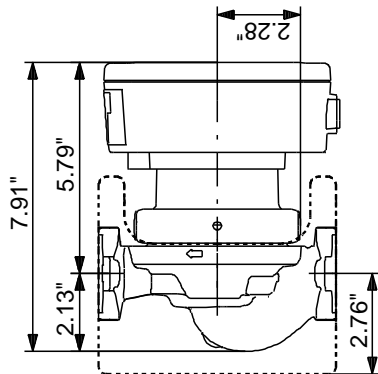
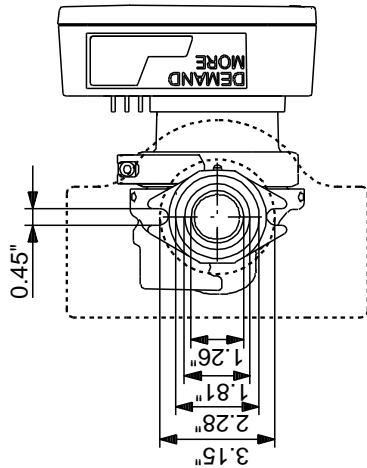
| | |
|------------------|---------------------|
| Others: | |
| Energy (EEL): | 0.20 |
| Net weight: | 11 lb |
| Gross weight: | 13.2 lb |
| Shipping volume: | 345 ft ³ |



Example of mains-connected motor with mains switch, backup fuse and additional protection



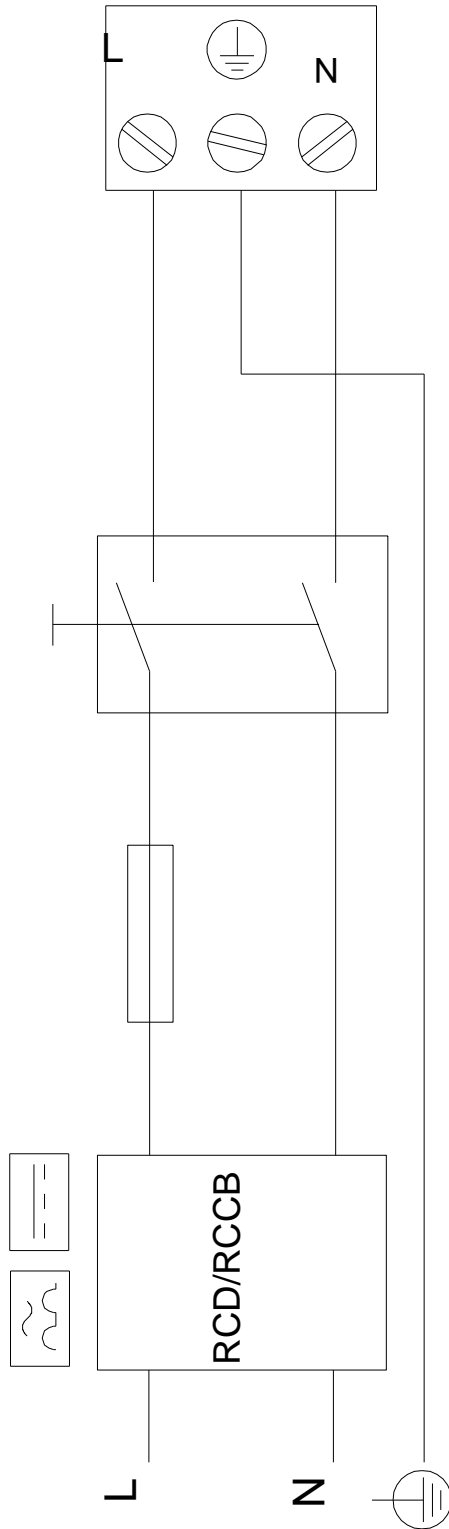
98126821 MAGNA1 32-60 F N 60 Hz



Note! All units are in [mm] unless otherwise stated.
Disclaimer: This simplified dimensional drawing does not show all details.

98126821 MAGNA1 32-60 F N 60 Hz

Example of mains-connected motor
with mains switch, backup fuse and additional protection



All units are [mm] unless otherwise presented.



Company name:

Created by:

Phone:

Date: 2/21/2018

Order Data:

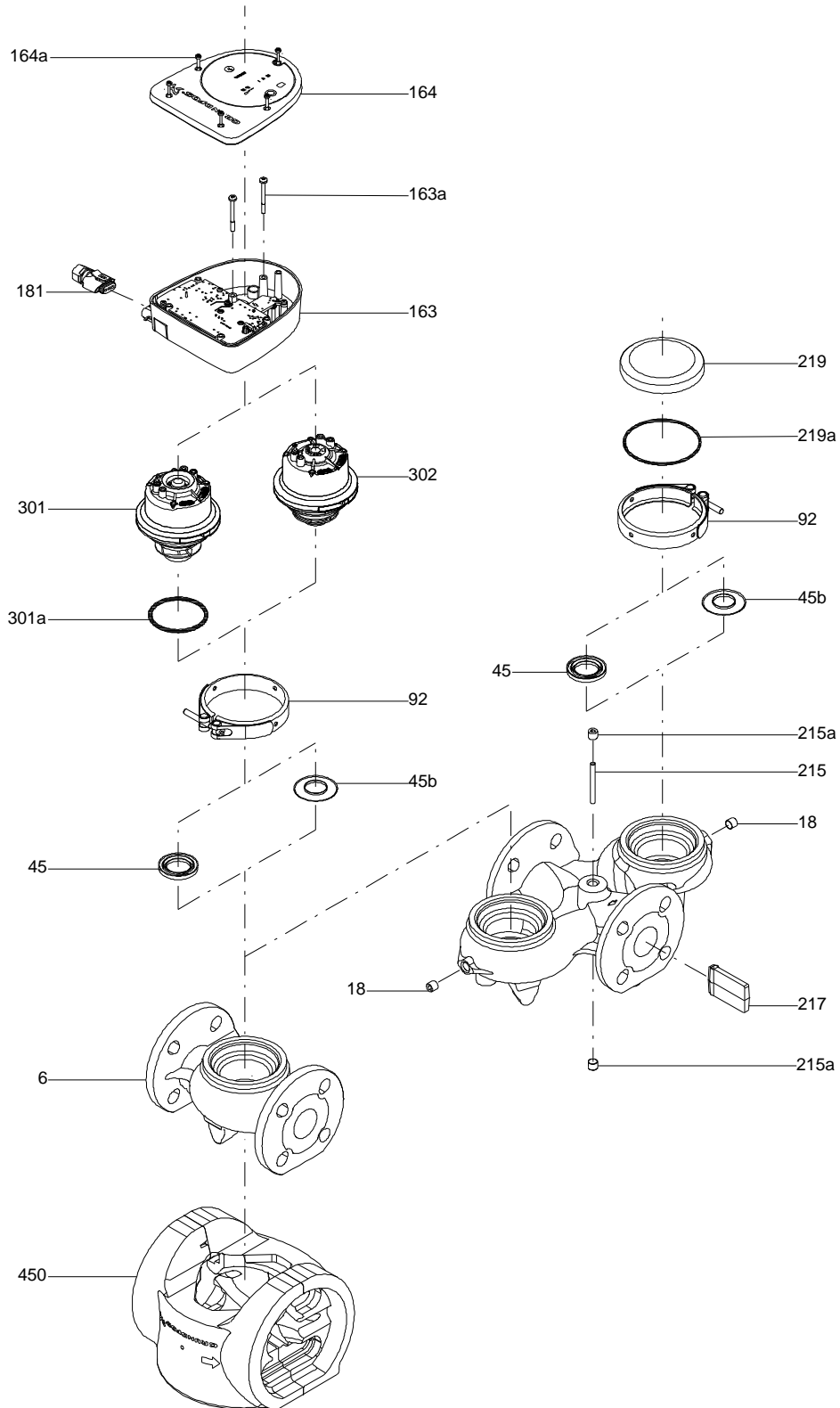
Product name: MAGNA1 32-60 F N

Amount: 1

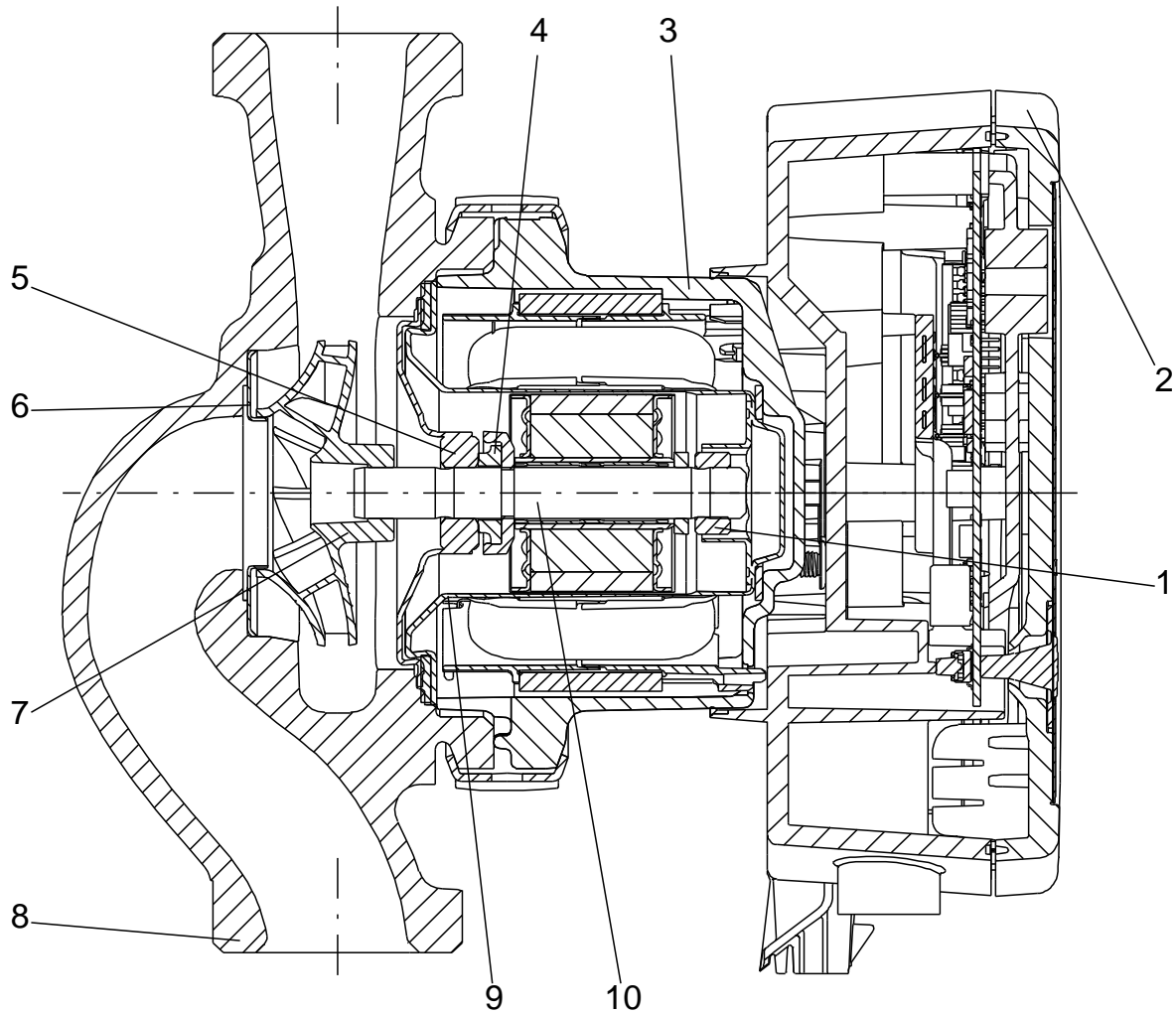
Product No.: 98126821

Total: Price on request

Exploded view (TM055854 MAGNA1 200W)



Sectional drawing (TM069947 Magna1 small model C)





Company name:

Created by:

Phone:

Date:

2/21/2018

Parts list MAGNA1 32-60 F N, Prod number 98126821
Valid from 31.7.2017 (1731)

| Position | Description | Annotation | Classification data | Part No. | Count | Unit |
|----------|-------------------------------|------------|---------------------|----------|-------|------|
| | Gasket | | | | 2 | pcs |
| | Gasket | | | | 1 | pcs |
| | Washer | | | | 2 | pcs |
| | Control box | | | | 1 | pcs |
| | Pan head thread forming screw | | | | 2 | pcs |
| 6 | Pump housing cpl. | | | | 1 | pcs |
| 92 | Clamp cpl. | | | | 1 | pcs |
| - 301 | Pump head cpl. | | | | 1 | pcs |
| 301a | O-ring | | | | 1 | |
| 450 | Insulation | | | | 1 | pcs |