

PROJECT: _____	UNIT TAG: _____	QUANTITY: _____
REPRESENTATIVE: _____	TYPE OF SERVICE: _____	DATE: _____
ENGINEER: _____	SUBMITTED BY: _____	DATE: _____
CONTRACTOR: _____	APPROVED BY: _____	DATE: _____
	ORDER NO.: _____	DATE: _____

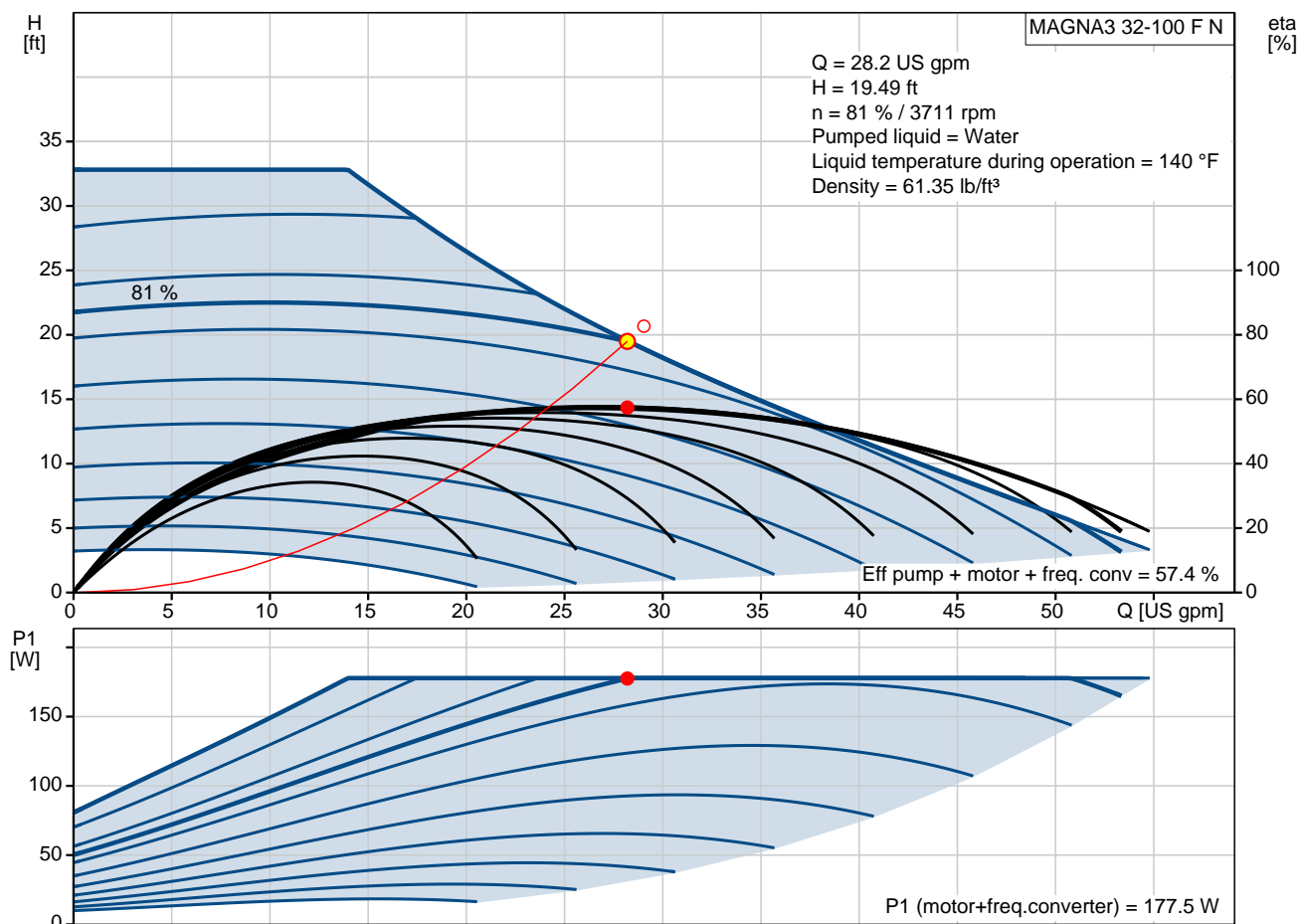


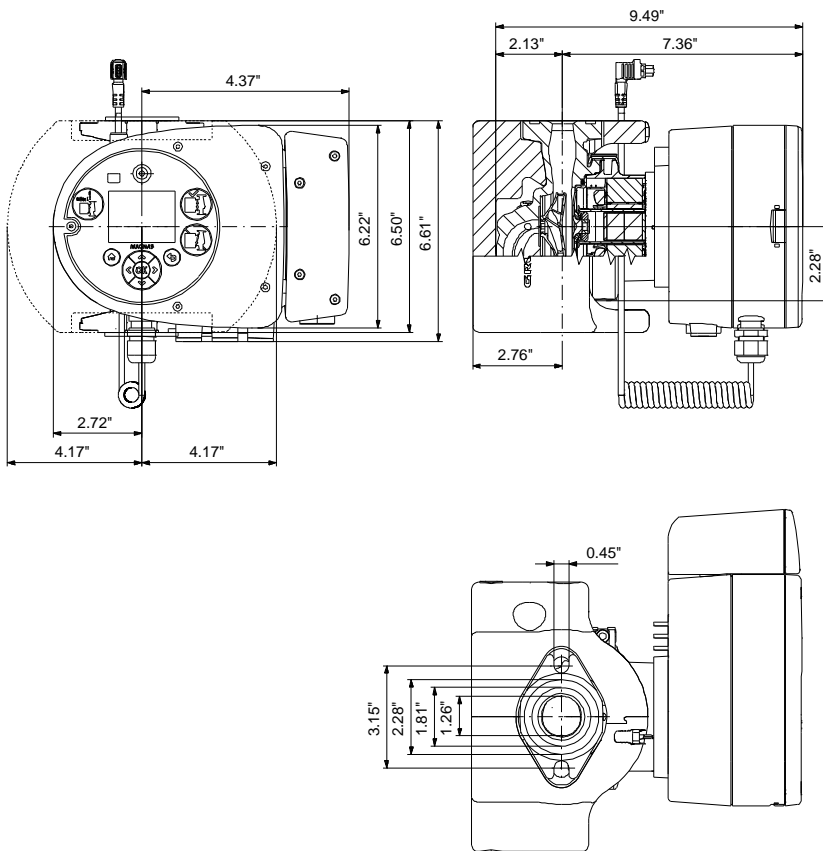
MAGNA3 32-100 F N

Full range of intelligent, high-efficiency circulators for heating, cooling, ground source heat pump systems and domestic hot water applications

Product photo could vary from the actual product

Conditions of Service		Pump Data		Motor Data	
Flow:	28.2 US gpm	Maximum operating pressure:	174.05 psi	P1 max:	9.7 .. 178 W
Head:	19.49 ft	Liquid temperature range:	14 .. 230 °F	Rated voltage:	115-230 V
Efficiency:	57.4 %	Maximum ambient temperature:	104 °F	Main frequency:	60 Hz
Liquid:	Water	Approvals:	98544604	Enclosure class:	X4D
Temperature:	140 °F	Flange standard:	GF	Insulation class:	F
NPSH required:	ft	Pipe connection:	GF15/26/40/43		
Viscosity:	_____	Product number:	98126826		
Specific Gravity:	0.985				






Materials:

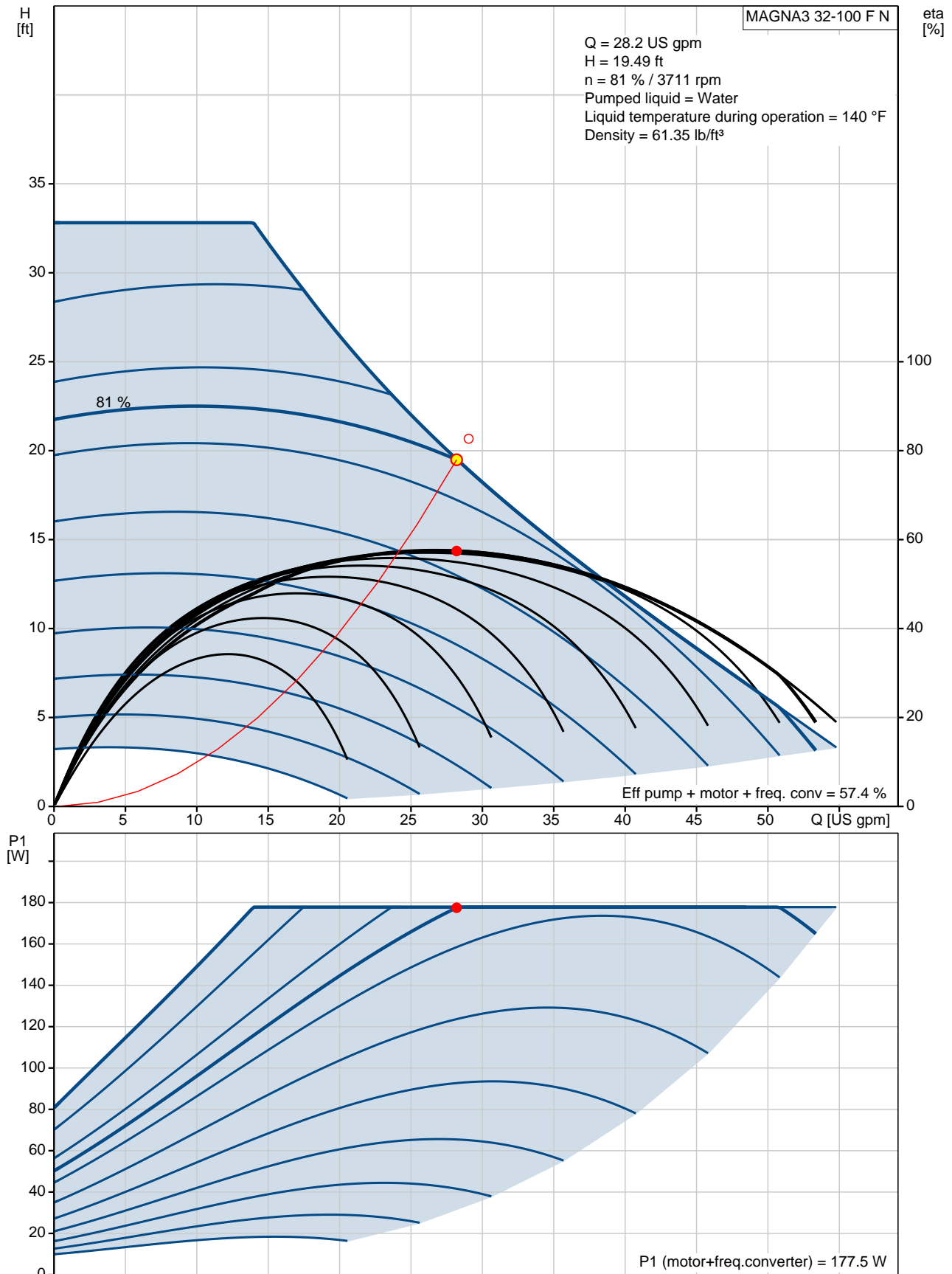
Pump housing: Stainless steel
EN 1.4308
ASTM 351 CF8

Impeller: PES 30%GF

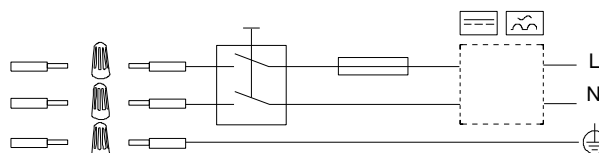
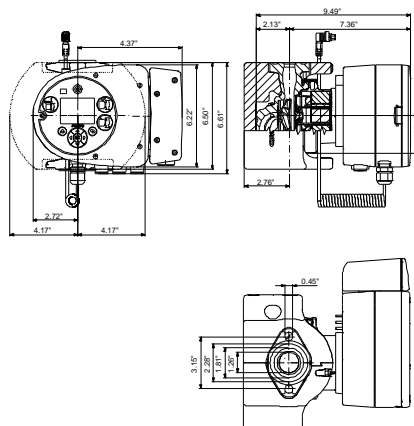
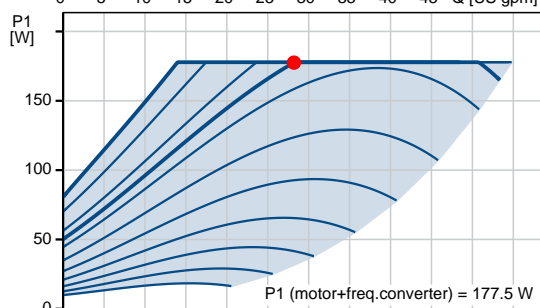
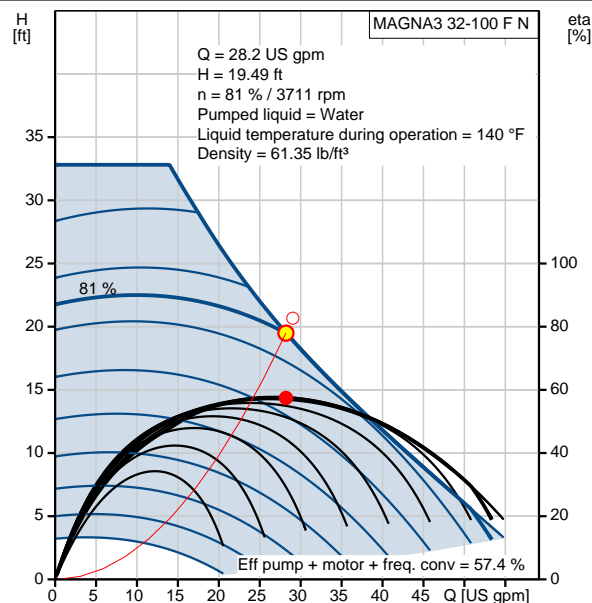
Count	Description
1	<p>MAGNA3 32-100 F N</p>  <p>Product photo could vary from the actual product</p> <p>Product No.: 98126826</p> <p>MAGNA3 – More than a pump With its unrivalled efficiency, all-encompassing range and built-in communication capabilities plus functionalities replacing system components, the MAGNA3 is ideal for engineers and specifiers looking to create high-performance systems for buildings.</p> <p>This pump in the Grundfos Master Class will fit both heating and cooling applications perfectly, making it the obvious choice for almost any building project – old or new.</p> <p>The MAGNA3 is of the canned-rotor type, i.e. pump and motor form an integral unit without shaft seal and with only two gaskets for sealing. The bearings are lubricated by the pumped liquid.</p> <p>The innovative clamp with only one screw enables easy repositioning of the pump head.</p> <p>The MAGNA3 is a pump with no maintenance requirements and with extremely low Life Cycle Cost.</p> <p>The pump is characterised by the following:</p> <ul style="list-style-type: none"> • controller integrated in the control box • control panel with TFT display on the control box • control box prepared for optional CIM modules • built-in differential-pressure and temperature sensor • cast-iron pump housing (depending on model) • carbon-fiber-reinforced composite rotor can • stainless-steel bearing plate and rotor cladding • aluminium alloy stator housing • air-cooled power electronics <p>The MAGNA3 is a single-phase pump.</p> <p>Characteristic features</p> <ul style="list-style-type: none"> • AUTOADAPT. • FLOWADAPT and FLOWLIMIT (more than a pump function as it reduces the need for pump throttling valves). • Proportional-pressure control. • Constant-pressure control. • Constant-temperature control. • Constant-curve duty. • Max. or min. curve duty. • Automatic Night Setback. • No external motor protection required. • Insulating shells supplied with single-head pumps for heating systems. • Large temperature range where the liquid temperature and the ambient temperature are independent of each other. <p>Communication The MAGNA3 enables communication via the following:</p> <ul style="list-style-type: none"> • wireless Grundfos GO Remote • fieldbus communication via CIM modules • digital inputs • relay outputs • analog input (more than a pump function as heat energy meter)

Count	Description
	<p>Motor and electronic controller</p> <p>The MAGNA3 incorporates a 4-pole synchronous, permanent-magnet motor (PM motor). This motor type is characterised by higher efficiency than a conventional asynchronous squirrel-cage motor.</p> <p>The pump speed is controlled by an integrated frequency converter.</p> <p>A differential-pressure and temperature sensor is incorporated in the pump.</p> <p>Liquid:</p> <p>Pumped liquid: Water</p> <p>Liquid temperature range: 14 .. 230 °F</p> <p>Selected liquid temperature: 140 °F</p> <p>Density: 61.35 lb/ft³</p> <p>Technical:</p> <p>Actual calculated flow: 28.2 US gpm</p> <p>Rated flow: 29.1 US gpm</p> <p>Resulting head of the pump: 19.49 ft</p> <p>TF class: 110</p> <p>Approvals on nameplate: 98544604</p> <p>Materials:</p> <p>Pump housing: Stainless steel EN 1.4308 ASTM 351 CF8</p> <p>Impeller: PES 30%GF</p> <p>Installation:</p> <p>Range of ambient temperature: 32 .. 104 °F</p> <p>Maximum operating pressure: 174.05 psi</p> <p>Flange standard: GF</p> <p>Pipe connection: GF15/26/40/43</p> <p>Pressure stage: PN12</p> <p>Port-to-port length: 6 1/2 in</p> <p>Electrical data:</p> <p>Power input - P1: 9.7 .. 178 W</p> <p>Main frequency: 60 Hz</p> <p>Rated voltage: 1 x 115-230 V</p> <p>Maximum current consumption: 0.29 .. 1.61 A</p> <p>Enclosure class (IEC 34-5): X4D</p> <p>Insulation class (IEC 85): F</p> <p>Others:</p> <p>Energy (EEI): 0.18</p> <p>Net weight: 13.8 lb</p> <p>Gross weight: 14.2 lb</p> <p>Shipping volume: 0.42 ft³</p> <p>Custom tariff no.: 8413.70.2005</p>

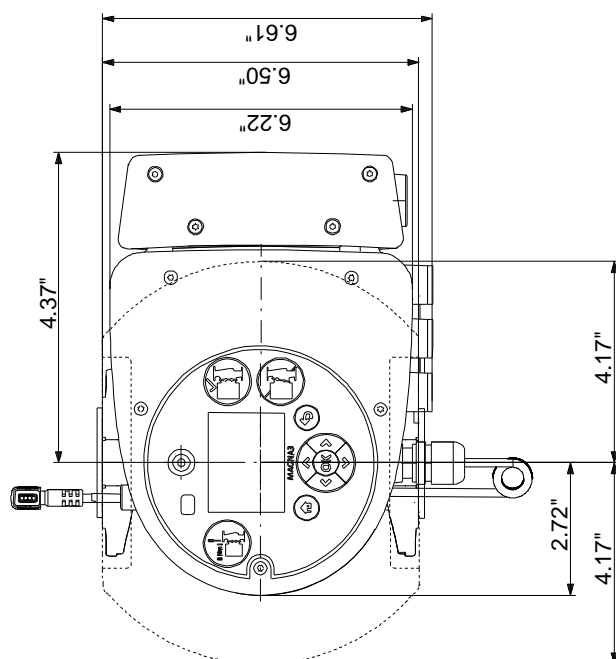
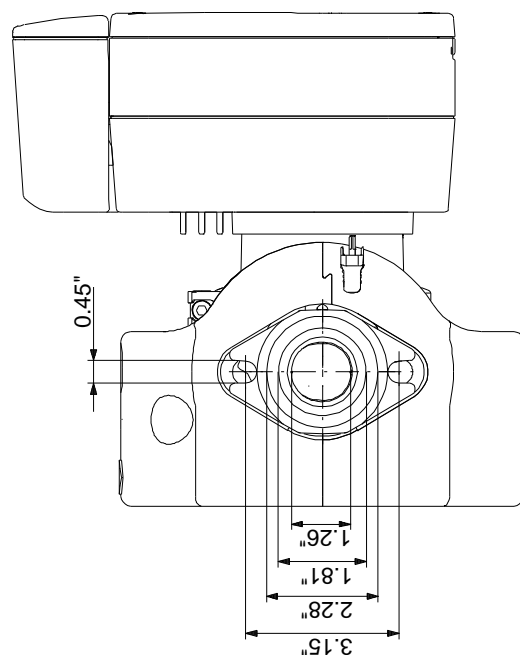
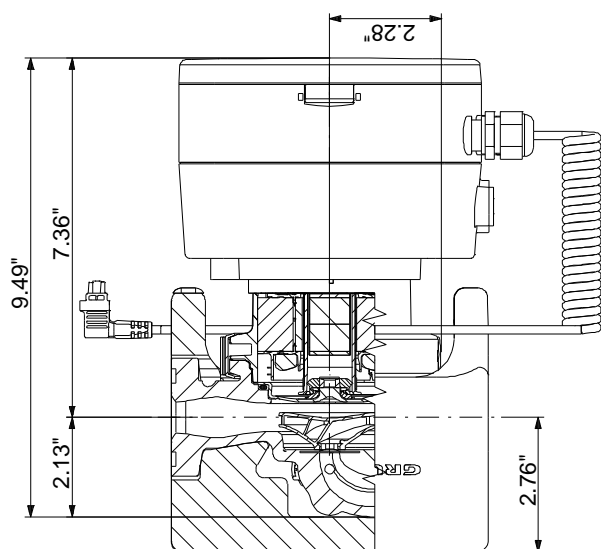
98126826 MAGNA3 32-100 F N 60 Hz



Description	Value
General information:	
Product name:	MAGNA3 32-100 F N
Product No.:	98126826
EAN:	5710629499882
Technical:	
Actual calculated flow:	28.2 US gpm
Rated flow:	29.1 US gpm
Resulting head of the pump:	19.49 ft
Head max:	32.81 ft
TF class:	110
Approvals on nameplate:	98544604
Model:	D
Materials:	
Pump housing:	Stainless steel
	EN 1.4308
	ASTM 351 CF8
Impeller:	PES 30%GF
Installation:	
Range of ambient temperature:	32 .. 104 °F
Maximum operating pressure:	174.05 psi
Flange standard:	GF
Pipe connection:	GF15/26/40/43
Pressure stage:	PN12
Port-to-port length:	6 1/2 in
Liquid:	
Pumped liquid:	Water
Liquid temperature range:	14 .. 230 °F
Selected liquid temperature:	140 °F
Density:	61.35 lb/ft³
Electrical data:	
Power input - P1:	9.7 .. 178 W
Main frequency:	60 Hz
Rated voltage:	1 x 115-230 V
Maximum current consumption:	0.29 .. 1.61 A
Enclosure class (IEC 34-5):	X4D
Insulation class (IEC 85):	F
Others:	
Energy (EEI):	0.18
Net weight:	13.8 lb
Gross weight:	14.2 lb
Shipping volume:	0.42 ft³
Custom tariff no.:	8413.70.2005



98126826 MAGNA3 32-100 F N 60 Hz



Note! All units are in [in] unless otherwise stated.
Disclaimer: This simplified dimensional drawing does not show all details.



Company name:

Created by:

Phone:

Date:

4/11/2019

Order Data:

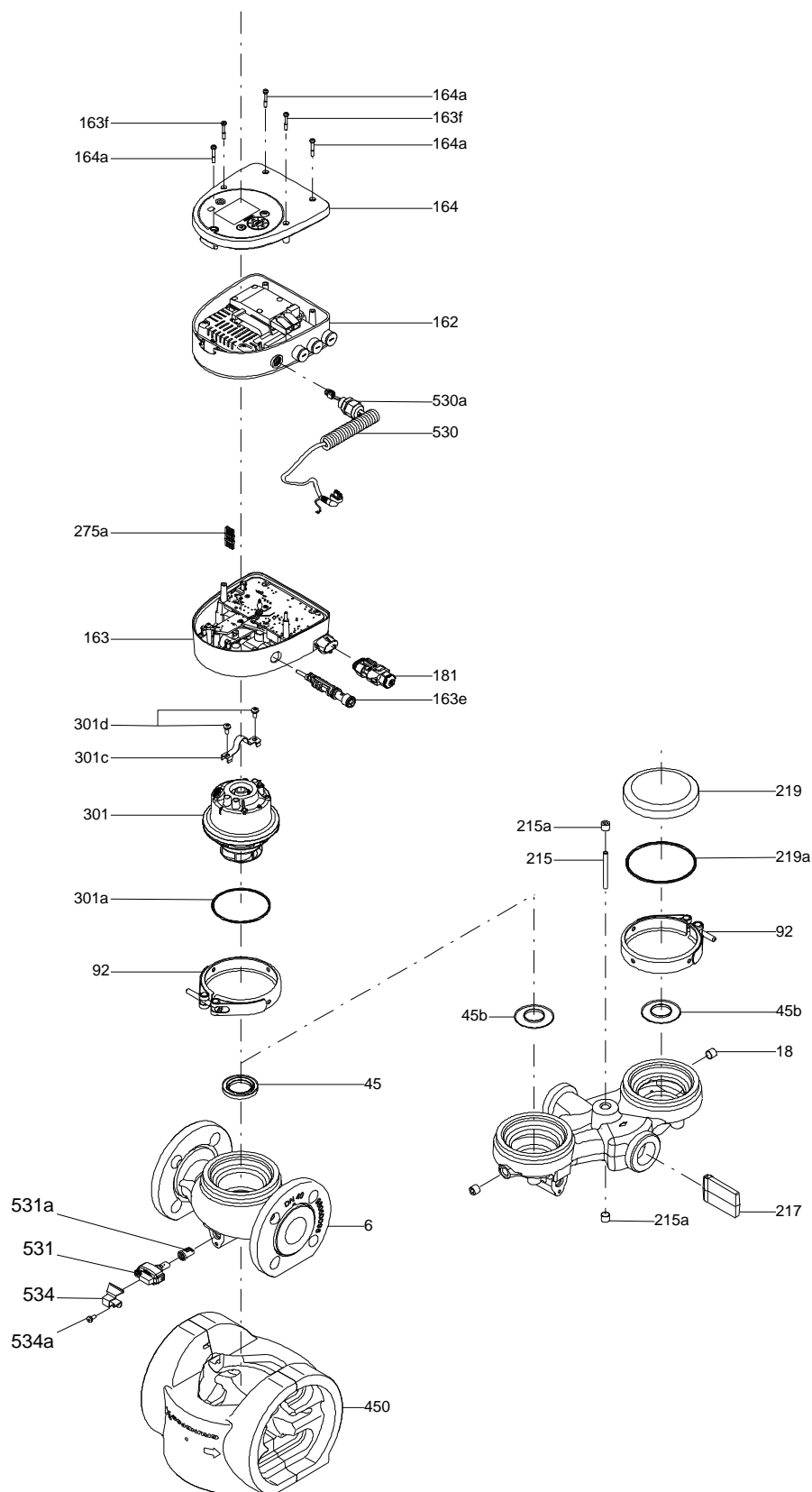
Product name: MAGNA3 32-100 F N

Amount: 1

Product No.: 98126826

Total: Price on request

(TM058038 Magna3 small)



Parts list MAGNA3 32-100 F N, Prod number 98126826

Produced After 1511 (production year and week number)

Position	Description	Annotation	Classification data	Part No.	Count	Unit
	Gasket				2	pcs
	Gasket				1	pcs
-	Pump housing cpl.				1	pcs
6	Pump housing				1	
45	Neck ring				1	
	Conf.				1	pcs
	Pan head thread forming screw				2	pcs
92	Clamp cpl.				1	pcs
163	Control box				1	pcs
164a	Screw DELTA PT				11	pcs
252b	Blind plug				1	pcs
- 301	Pump head cpl.				1	pcs
301a	O-ring				1	
450	Insulation				1	pcs
- 531	Sensor				1	pcs
531a	Sealing cap				1	
531	Sensor				1	pcs
534	Bracket				1	pcs
534a	Pan head thread forming screw				1	pcs