

| | | |
|-----------------------|------------------------|-----------------|
| PROJECT: _____ | UNIT TAG: _____ | QUANTITY: _____ |
| REPRESENTATIVE: _____ | TYPE OF SERVICE: _____ | DATE: _____ |
| ENGINEER: _____ | SUBMITTED BY: _____ | DATE: _____ |
| CONTRACTOR: _____ | APPROVED BY: _____ | DATE: _____ |
| | ORDER NO.: _____ | DATE: _____ |

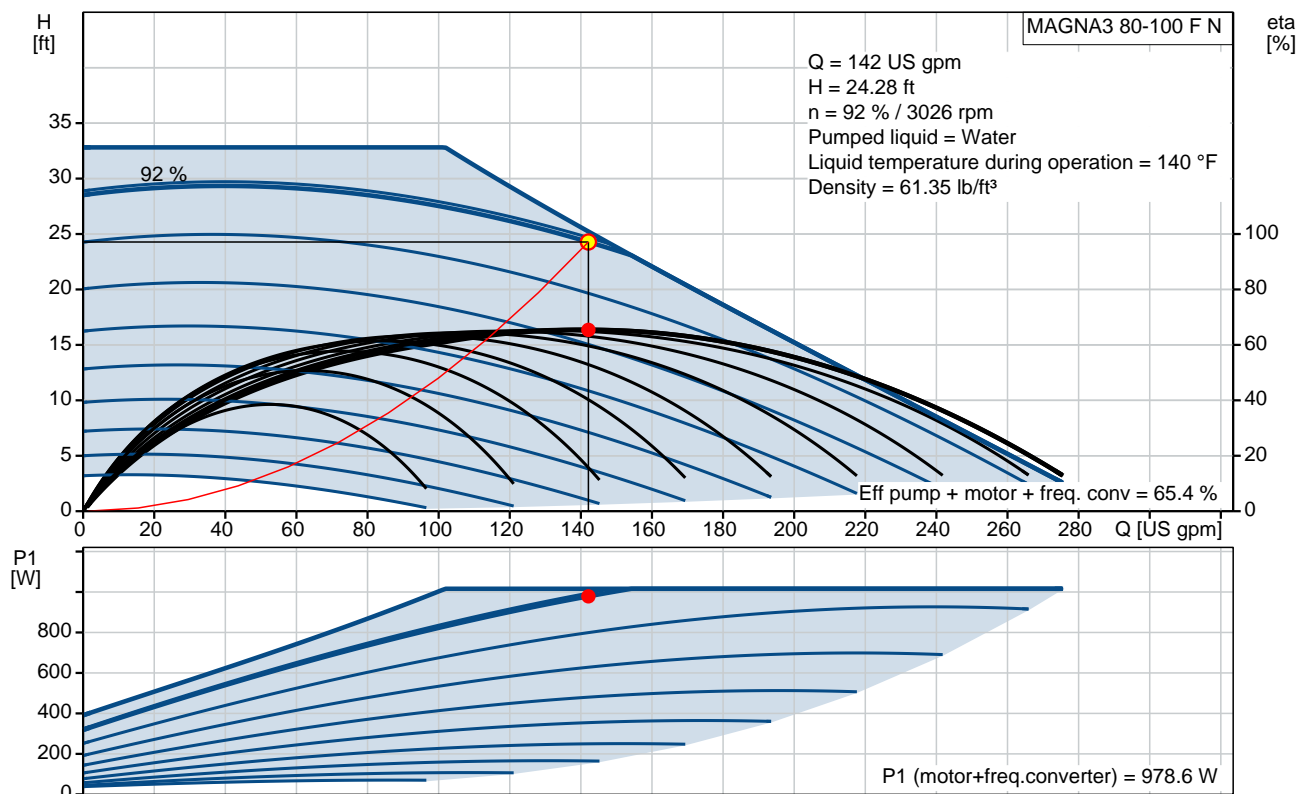
MAGNA3 80-100 F N

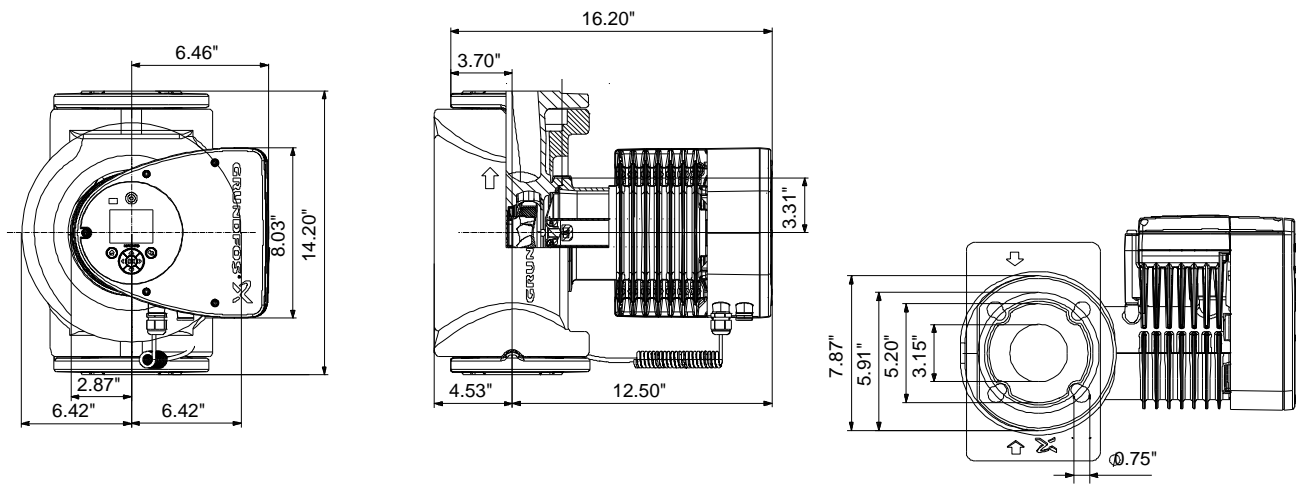


Full range of intelligent, high-efficiency circulators for heating, cooling, ground source heat pump systems and domestic hot water applications

Product photo could vary from the actual product

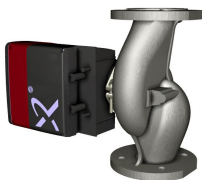
| Conditions of Service | Pump Data | Motor Data |
|-------------------------|--|--------------------------|
| Flow: 142 US gpm | Maximum operating pressure: 174.05 psi | P1 max: 31 .. 1017 W |
| Head: 24.28 ft | Liquid temperature range: 14 .. 230 °F | Rated voltage: 208-230 V |
| Efficiency: 65.4 % | Maximum ambient temperature: 104 °F | Main frequency: 60 Hz |
| Liquid: Water | Approvals: 98544604 | Enclosure class: X4D |
| Temperature: 140 °F | Flange standard: GF | Insulation class: F |
| NPSH required: ft | Pipe connection: GF80 | |
| Viscosity: _____ | Product number: 98126858 | |
| Specific Gravity: 0.985 | | |





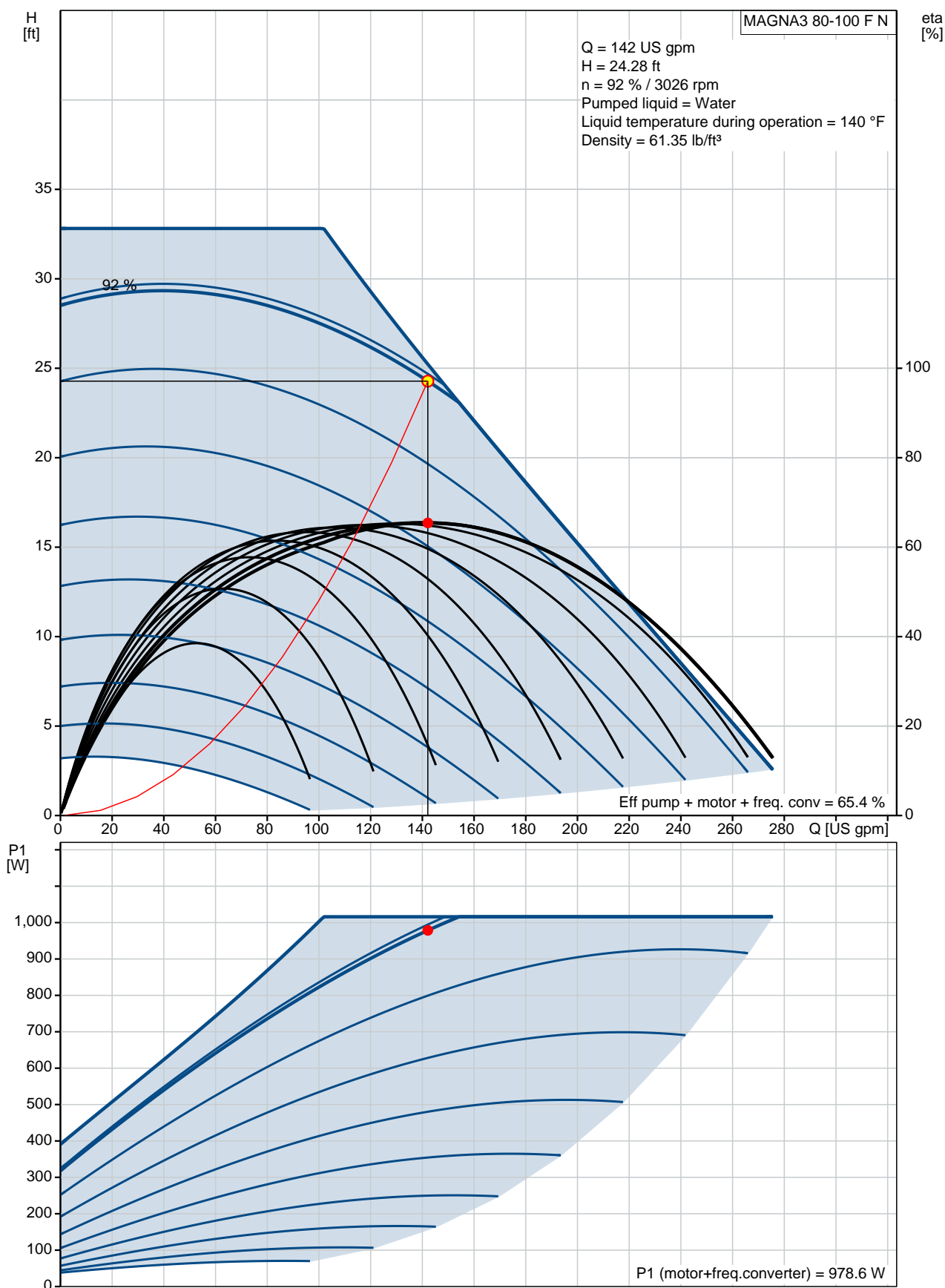
Materials:

Pump housing: Stainless steel
EN 1.4308
ASTM 351 CF8
Impeller: PES 30%GF

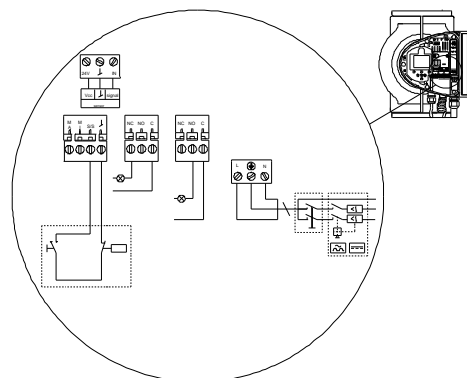
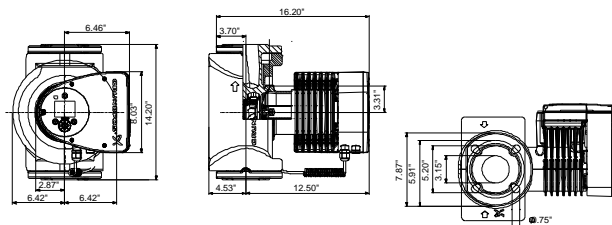
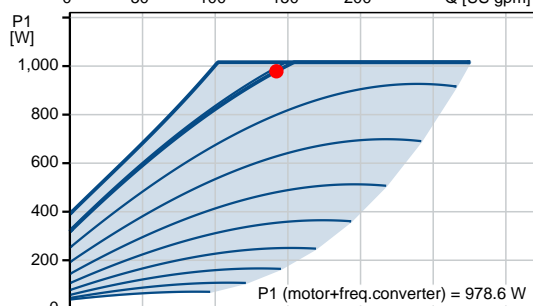
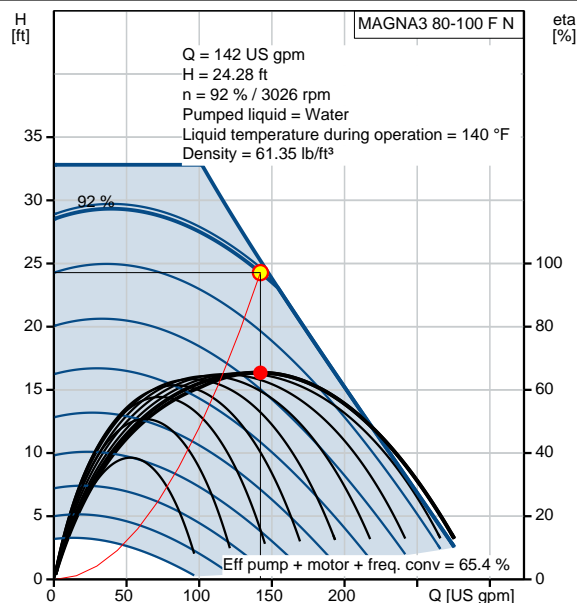
| Count | Description |
|-------|---|
| 1 | <p>MAGNA3 80-100 F N</p>  <p>Product No.: 98126858</p> <p>MAGNA3 – More than a pump With its unrivalled efficiency, all-encompassing range and built-in communication capabilities plus functionalities replacing system components, the MAGNA3 is ideal for engineers and specifiers looking to create high-performance systems for buildings.</p> <p>This pump in the Grundfos Master Class will fit both heating and cooling applications perfectly, making it the obvious choice for almost any building project – old or new.</p> <p>The MAGNA3 is of the canned-rotor type, i.e. pump and motor form an integral unit without shaft seal and with only two gaskets for sealing. The bearings are lubricated by the pumped liquid.</p> <p>The innovative clamp with only one screw enables easy repositioning of the pump head.</p> <p>The MAGNA3 is a pump with no maintenance requirements and with extremely low Life Cycle Cost.</p> <p>The pump is characterised by the following:</p> <ul style="list-style-type: none"> • controller integrated in the control box • control panel with TFT display on the control box • control box prepared for optional CIM modules • built-in differential-pressure and temperature sensor • cast-iron pump housing (depending on model) • carbon-fiber-reinforced composite rotor can • stainless-steel bearing plate and rotor cladding • aluminium alloy stator housing • air-cooled power electronics <p>The MAGNA3 is a single-phase pump.</p> <p>Characteristic features</p> <ul style="list-style-type: none"> • AUTOADAPT. • FLOWADAPT and FLOWLIMIT (more than a pump function as it reduces the need for pump throttling valves). • Proportional-pressure control. • Constant-pressure control. • Constant-temperature control. • Constant-curve duty. • Max. or min. curve duty. • Automatic Night Setback. • No external motor protection required. • Insulating shells supplied with single-head pumps for heating systems. • Large temperature range where the liquid temperature and the ambient temperature are independent of each other. <p>Communication The MAGNA3 enables communication via the following:</p> <ul style="list-style-type: none"> • wireless Grundfos GO Remote • fieldbus communication via CIM modules • digital inputs • relay outputs • analog input (more than a pump function as heat energy meter) <p>Motor and electronic controller</p> |

| Count | Description |
|-------|---|
| | <p>The MAGNA3 incorporates a 4-pole synchronous, permanent-magnet motor (PM motor). This motor type is characterised by higher efficiency than a conventional asynchronous squirrel-cage motor.</p> <p>The pump speed is controlled by an integrated frequency converter.</p> <p>A differential-pressure and temperature sensor is incorporated in the pump.</p> <p>Liquid:</p> <p>Pumped liquid: Water</p> <p>Liquid temperature range: 14 .. 230 °F</p> <p>Selected liquid temperature: 140 °F</p> <p>Density: 61.35 lb/ft³</p> <p>Technical:</p> <p>Actual calculated flow: 142 US gpm</p> <p>Rated flow: 142 US gpm</p> <p>Resulting head of the pump: 24.28 ft</p> <p>TF class: 110</p> <p>Approvals on nameplate: 98544604</p> <p>Materials:</p> <p>Pump housing: Stainless steel EN 1.4308 ASTM 351 CF8</p> <p>Impeller: PES 30%GF</p> <p>Installation:</p> <p>Range of ambient temperature: 32 .. 104 °F</p> <p>Maximum operating pressure: 174.05 psi</p> <p>Flange standard: GF</p> <p>Pipe connection: GF80</p> <p>Pressure stage: PN12</p> <p>Port-to-port length: 14 3/16 in</p> <p>Electrical data:</p> <p>Power input - P1: 31 .. 1017 W</p> <p>Main frequency: 60 Hz</p> <p>Rated voltage: 1 x 208-230 V</p> <p>Maximum current consumption: 0.32 .. 4.71 A</p> <p>Enclosure class (IEC 34-5): X4D</p> <p>Insulation class (IEC 85): F</p> <p>Others:</p> <p>Energy (EEI): 0.17</p> <p>Net weight: 66 lb</p> <p>Gross weight: 71.8 lb</p> <p>Shipping volume: 2370 ft³</p> <p>Custom tariff no.: 8413.70.2015</p> |

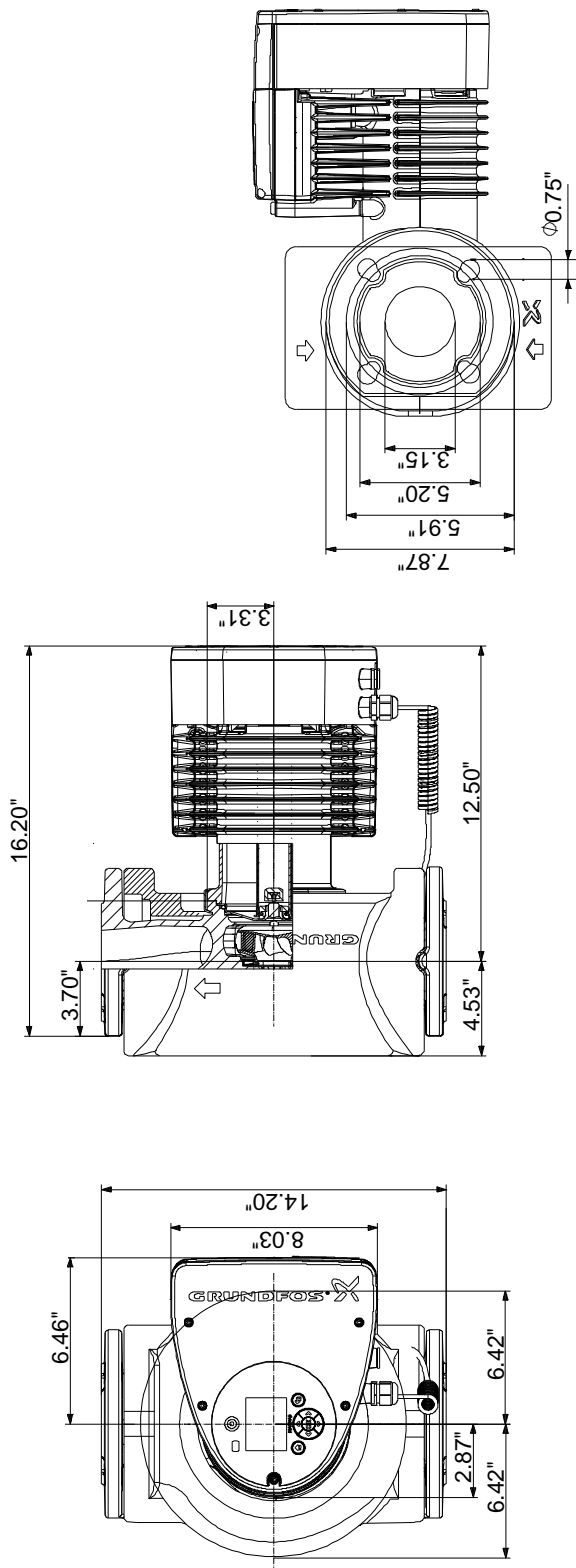
98126858 MAGNA3 80-100 F N 60 Hz



| Description | Value |
|-------------------------------|-------------------|
| General information: | |
| Product name: | MAGNA3 80-100 F N |
| Product No.: | 98126858 |
| EAN: | 5710629500205 |
| Technical: | |
| Actual calculated flow: | 142 US gpm |
| Rated flow: | 142 US gpm |
| Resulting head of the pump: | 24.28 ft |
| Head max: | 32.81 ft |
| TF class: | 110 |
| Approvals on nameplate: | 98544604 |
| Model: | D |
| Materials: | |
| Pump housing: | Stainless steel |
| | EN 1.4308 |
| | ASTM 351 CF8 |
| Impeller: | PES 30%GF |
| Installation: | |
| Range of ambient temperature: | 32 .. 104 °F |
| Maximum operating pressure: | 174.05 psi |
| Flange standard: | GF |
| Pipe connection: | GF80 |
| Pressure stage: | PN12 |
| Port-to-port length: | 14 3/16 in |
| Liquid: | |
| Pumped liquid: | Water |
| Liquid temperature range: | 14 .. 230 °F |
| Selected liquid temperature: | 140 °F |
| Density: | 61.35 lb/ft³ |
| Electrical data: | |
| Power input - P1: | 31 .. 1017 W |
| Main frequency: | 60 Hz |
| Rated voltage: | 1 x 208-230 V |
| Maximum current consumption: | 0.32 .. 4.71 A |
| Enclosure class (IEC 34-5): | X4D |
| Insulation class (IEC 85): | F |
| Others: | |
| Energy (EEI): | 0.17 |
| Net weight: | 66 lb |
| Gross weight: | 71.8 lb |
| Shipping volume: | 2370 ft³ |
| Custom tariff no.: | 8413.70.2015 |

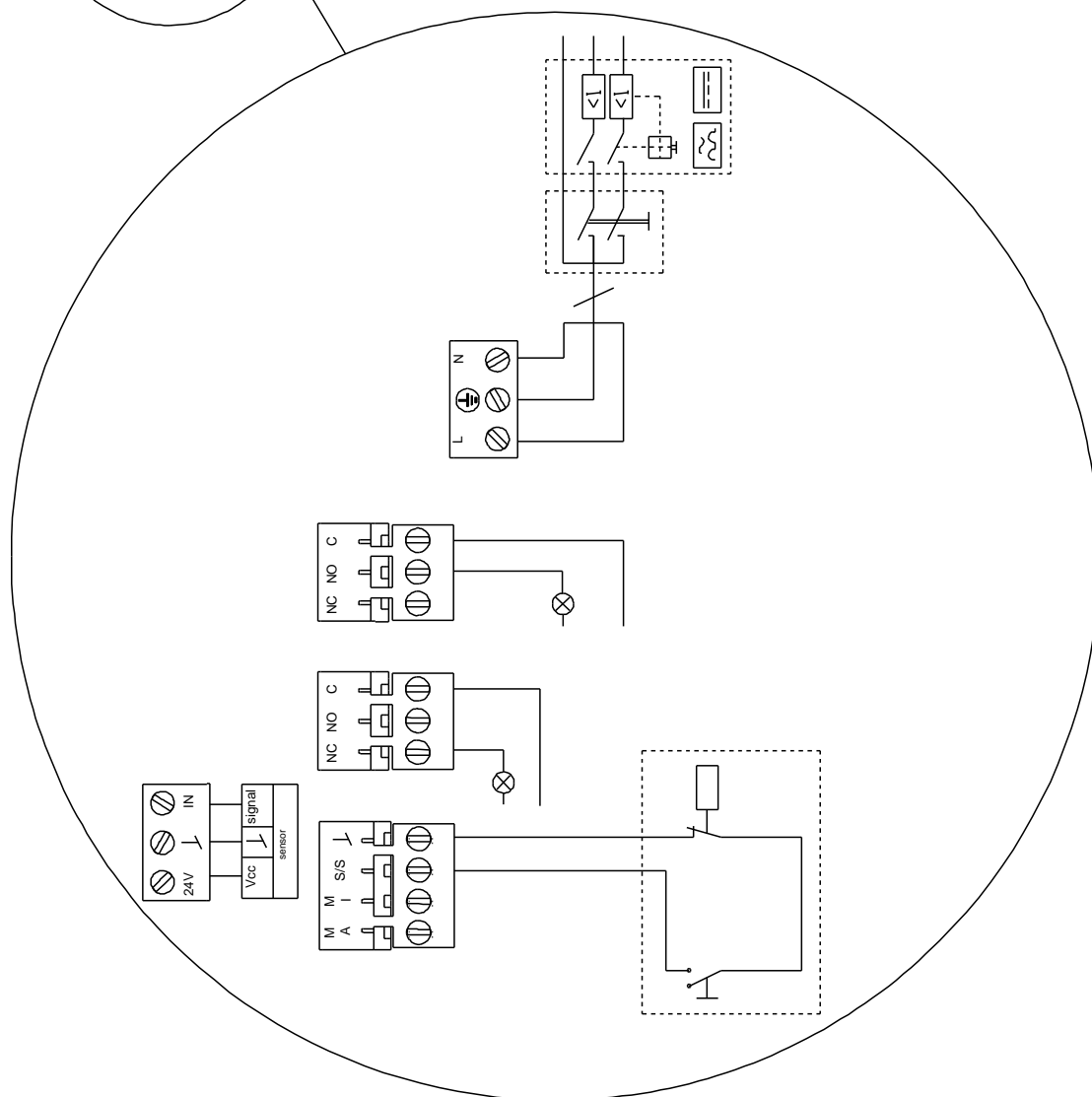
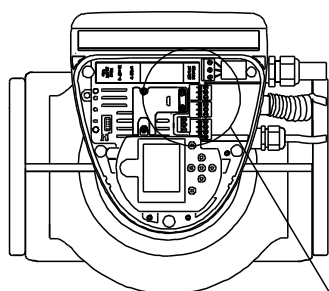


98126858 MAGNA3 80-100 F N 60 Hz



Note! All units are in [in] unless otherwise stated.
Disclaimer: This simplified dimensional drawing does not show all details.

98126858 MAGNA3 80-100 F N 60 Hz



All units are [in] unless otherwise presented.



Company name:

Created by:

Phone:

Date:

4/11/2019

Order Data:

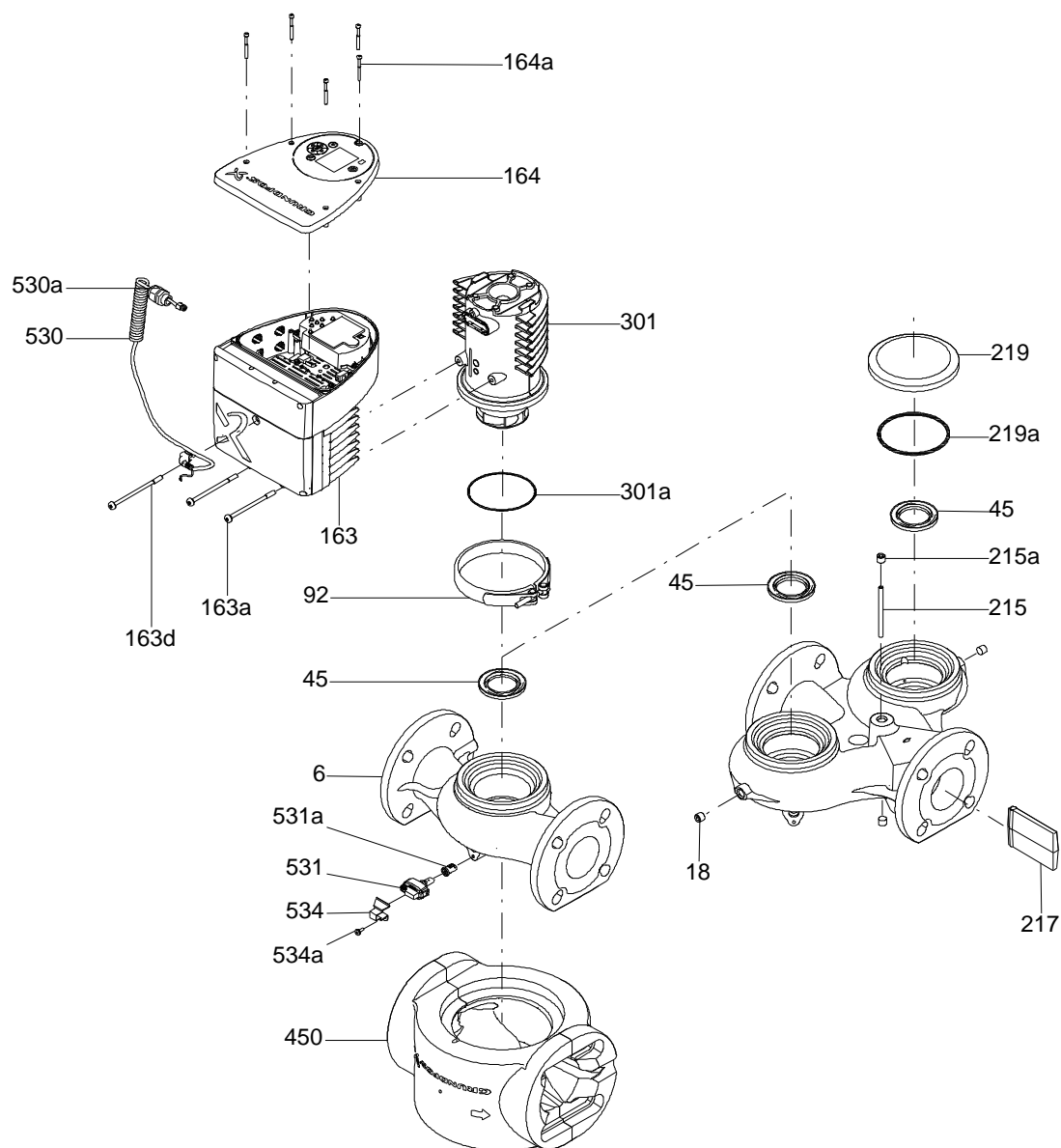
Product name: MAGNA3 80-100 F N

Amount: 1

Product No.: 98126858

Total: Price on request

(TM057299 MAGNA3 750-1600W)



Parts list MAGNA3 80-100 F N, Prod number 98126858
Produced After 1732 (production year and week number)

| Position | Description | Annotation | Classification data | Part No. | Count | Unit |
|----------|-------------------------------|------------|---------------------|----------|-------|------|
| - | Control box | | | | 1 | pcs |
| - 162 | Control box cpl. | | | | 1 | |
| | Spacer | | | | | |
| | Controlboard Leaded | | | | | |
| 7a | Combi Slot Torx screw | | | | | |
| 159a | Cable w/plug | | | | | |
| 159b | Connector plug 3-pole | | | | | |
| 159b | Connector plug 3-pole | | | | | |
| 159b | Connector plug 4-pole | | | | | |
| 159c | Pan washer head screw | | | | | |
| 159d | Board | | | | | |
| 160 | Spacer | | | | | |
| 163b | Compression spring | | | | | |
| 164 | Cover | | | | | |
| 164a | Screw DELTA PT | | | | | |
| 273b | Battery | | | | | |
| 501 | Displayboard cpl. | | | | | |
| 163 | Control box | | | | 1 | |
| - 6 | Pump housing cpl. | | | | 1 | pcs |
| 6 | Pump housing cpl. | | | | 1 | |
| 45 | Neck ring cpl. | | | | 1 | |
| 92 | Clamp cpl. | | | | 1 | pcs |
| 163a | Pan head screw | | | | 2 | pcs |
| 163d | Pan head screw | | | | 1 | pcs |
| 301 | Pump head | | | | 1 | pcs |
| 301b | Protector | | | | 1 | pcs |
| 450 | Insulation | | | | 1 | pcs |
| 531 | Sensor | | | | 1 | pcs |
| 534 | Bracket | | | | 1 | pcs |
| 534a | Pan head thread forming screw | | | | 1 | pcs |