

**Ecostat Classic**  
**Pressure Balance Trim, Round**  
 Finish: **Rubbed Bronze** Part no. : **15404921**



## Description

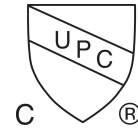
### Features

- Temperature and on/off control for 1 outlet
- Flow: 5.44 GPM (20.6 L/Min)
- Integrated bypass for use with diverter tub spouts

## Item details

List Price \$ 376.00

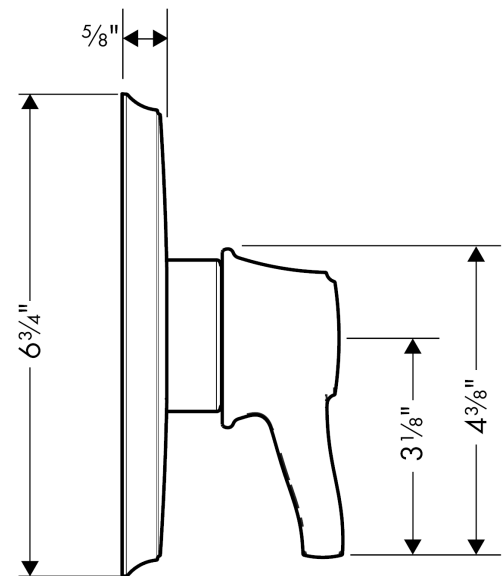
## Compliance / Sustainability



## Product image



## Scale drawing

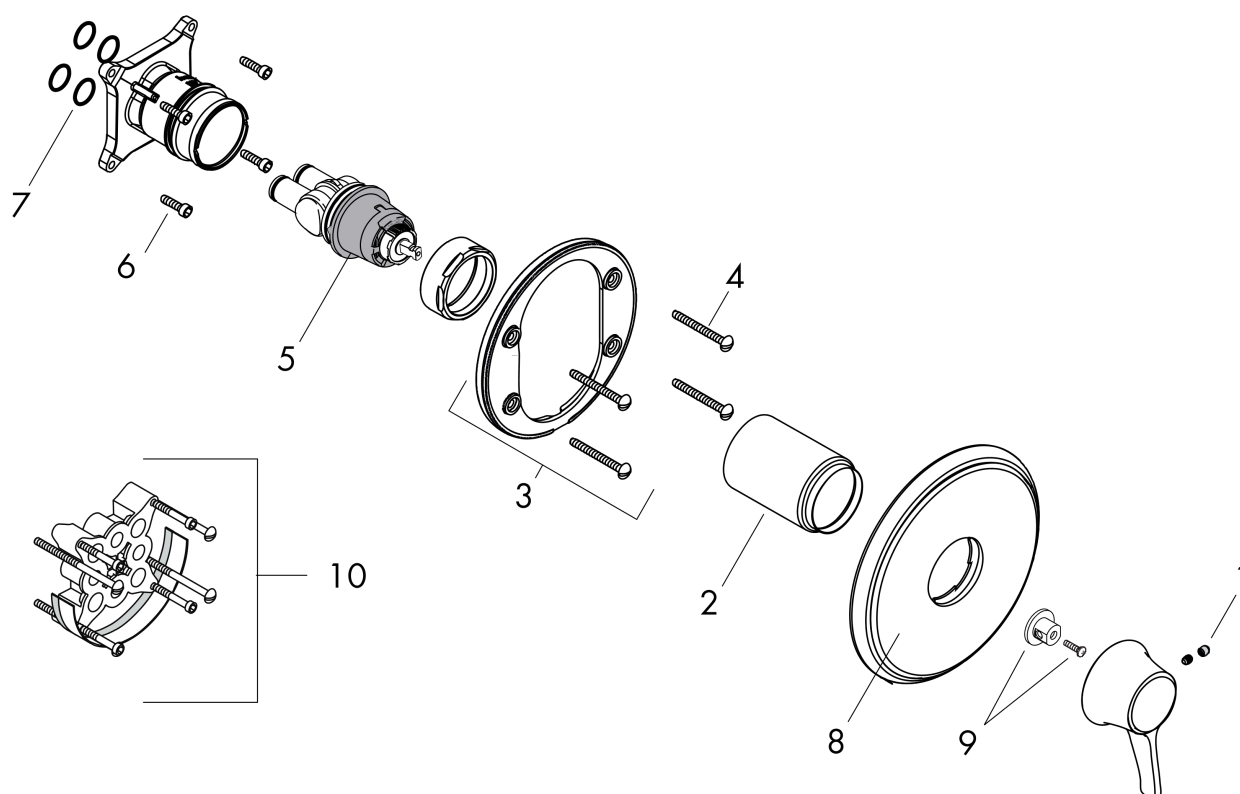


**Ecostat Classic**  
**Pressure Balance Trim, Round**  
 Finish: **Rubbed Bronze** Part no. : **15404921**



## Exploded drawing

Year of production: >03/18



**Ecostat Classic**  
**Pressure Balance Trim, Round**  
 Finish: **Rubbed Bronze**    Part no. : **15404921**



## Spare parts list

Year of production: >03/18

Pos.	Description	Part no.	Price	PU
1	screw cover	95181000	-	1
2	holder for escutcheon	98793000	-	1
3	sleeve	88765620	-	1
4	set of fixing screws	96454000	-	1
5	cartridge, assy	88727000	-	1
6	set of screws	96525000	-	1
7	O-ring 16x2	98133000	-	1
10	extension 25 mm	13595000	-	1
A	extension 22 mm (Ø 170 mm)	13596920	-	1