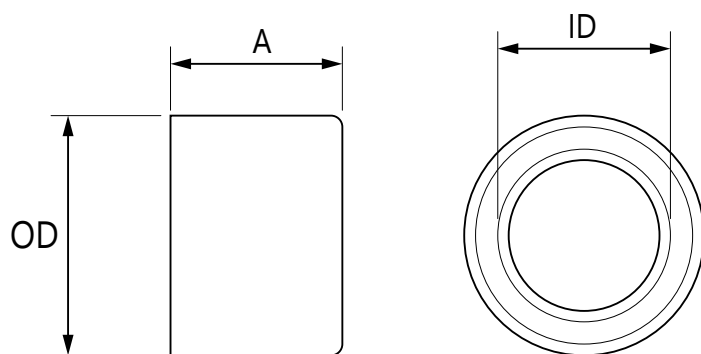


Job or Customer :	
Location :	
Engineer :	
<input type="checkbox"/> Complies with Spec <input type="checkbox"/> Alternate	Notes :
Contractor :	
HeatLink Rep :	
Submitted By :	Date :
Approved By :	Date :
P.O. Number :	Date :

Description

PEX-a expansion rings with stop for use with PEX F1960 fittings.

Qty	Stk. #	Size	Dimension, in/(mm)			Weight, lb/(kg)
			A	OD	ID	
	EX24205	½"	0.64 (16.3)	0.87 (22.1)	0.62 (15.7)	0.007 (0.003)
	EX24222	¾"	0.86 (21.8)	1.11 (28.2)	0.87 (22.1)	0.013 (0.006)
	EX24228	1"	1.11 (28.2)	1.41 (35.1)	1.13 (28.7)	0.022 (0.010)



Technical Data

Specifications

Material	Crosslinked Polyethylene (PEX-a)
Maximum Temperature	200°F (93.3°C)

Listings

NSF-pw

Standards

ASTM F1960

ASTM F877

CSA B137.5

NSF/ANSI 14

Installation

Installation must follow all of HeatLink's instructions and guidelines.

Related Documents

- PEX-a F1960 Potable Water Expansion System Installation Guide (L3240)
- HeatLink Limited Plumbing Warranty

This page is intentionally blank.