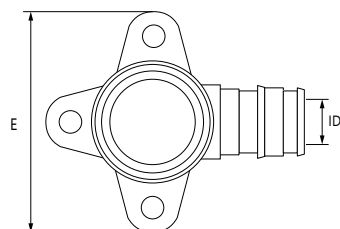
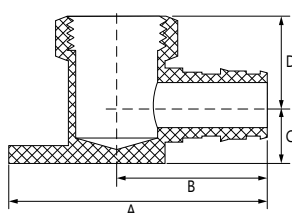


Job or Customer :	
Location :	
Engineer :	
<input type="checkbox"/> Complies with Spec <input type="checkbox"/> Alternate	Notes :
Contractor :	
HeatLink Rep :	
Submitted By :	Date :
Approved By :	Date :
P.O. Number :	Date :

## Description

Solid no lead (Eco) Brass PEX F1960 × FNPT drop ear elbow for PEX-a potable water expansion systems.

Dimension, in/(mm)									
Qty	Stk. #	Size	A	B	C	D	E	ID	Weight, lb/(kg)
	EX28305NL	½" PEX × ½" FNPT	2.18 (55.4)	1.27 (32.3)	0.50 (12.7)	0.75 (19.1)	1.86 (47.2)	0.38 (9.7)	0.189 (0.086)



## Technical Data

### Specifications

Material	No Lead (Eco) Brass - C69300
Operating pressure rating	180°F @ 100 psi (82.2°C @ 0.69 MPa)

### Listings

cNSFus-pw-G

### Codes

IAPMO UPC

### Standards

ASTM F877  
ASTM F1960  
CSA B137.5  
NSF/ANSI 14  
NSF/ANSI 61  
NSF/ANSI 372

## Installation

Installation must follow all of HeatLink's instructions and guidelines.

## Related Documents

- F1960 PEX-a Potable Water Expansion System Installation Guide (L3240)
- HeatLink Limited Plumbing Warranty

*This page is intentionally blank.*