

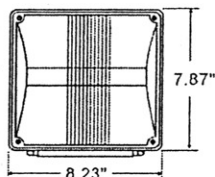
High Pressure Sodium and Metal Halide Wall Pack

Installation Instruction Sheet

Please read all instructions carefully before installing or servicing the fixture.

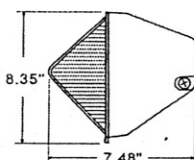
WARNING: Disconnect power before installation or servicing to reduce the risk of electric shock. This fixture is intended for wall mount installation over a 4" junction box. This fixture must be wired in accordance with the current national Electric Code and applicable local codes and ordinances. Proper grounding is required to ensure personal safety. A qualified electrician must perform all wiring. Failure to read and follow these instructions could result in serious injury or death.

FRONT VIEW



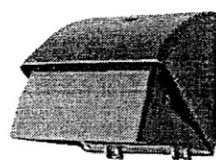
SIDE VIEW

WGH/WPH



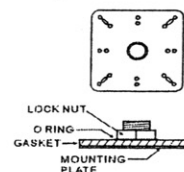
SIDE VIEW

WGC



Mounting Plate

(PROVIDED)



1. Box Mounting:
 - a. Place supply wires through provided mounting plate with gasket and attach to junction box.
 - b. Remove refractor, and then remove reflector plate from the fixture.
 - c. Remove close-up plug at the bottom.
 - d. Feed supply leads to the fixture and install the nut.
 - e. Connect fixture leads to supply leads with wire nuts.
 - f. Replace reflector plate and install lamp. Reinstall refractor.

2. Conduit Mounting:
 - a. Remove refractor and the reflector plate from the fixture.
 - b. Remove close-up plug in housing for desired conduit entrance.
 - c. Connect fixture leads to supply leads with wire nuts.
 - d. Replace reflector plate and install lamp. Reinstall refractor.

Mounting Note: If junction box is not used, it is recommended that the fixture be attached by drilling holes through the back of the fixture and attaching to non-combustible mounting surface. Avoid drilling close to live wires and make sure that there is at least 1/2" clearance. This fixture is intended for mounting on weatherproof junction box with provided gasket. After installation, use silicone sealant to create a weatherproof seal between the mounting surface and the base of fixture.

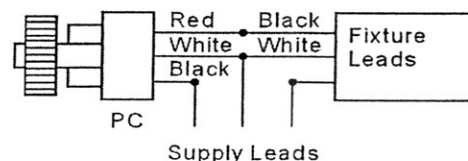
3. GROUNDING: Insure that the fixture is mounted securely for proper grounding. Use approved connector for all electrical connections.

4. MAINTENANCE: The fixture is designed for years of trouble free operation. For optimum performance, clean the reflector and refractor periodically with non-abrasive cleaner.

5. TROUBLESHOOTING: In the event that the fixture fails to operate properly, check the following:

- a. The proper lamp is properly installed.
- b. The lamp is not broken or faulty
- c. The line voltage at the fixture is correct.
- d. The fixture is wired properly.
- e. The fixture is grounded properly.
- f. The photocell (optional, by others), if installed, is of proper voltage and rating. (see typical wiring diagram)
- g. There is no reflected light back into the photocell causing the fixture to turn off if photocell installed.

f. PC Wiring Diagram



WARNING! Replace only with a lamp of same type and wattage as indicated on the fixture label.

DC100/072699



Hubbell Lighting

