

## TECHNICAL SPECIFICATION

### PVC Rigid Conduit Single Gang Weatherproof Cover Plates

#### **SCOPE**

This specification covers the requirements for Rigid PVC (polyvinyl chloride) Conduit single gang weatherproof cover plates with the following trade names:

RVSC15/10, RVPT15/10, RWTG15/10, RWDR15/10, RWDR15/10W  
RWGF15/10, RWGF15/10W, RWTL15, RWTL20, RWTL30, RWTL50

#### **MATERIALS**

The cover is injection molded from virgin PVC compound.

PVC material used in the manufacture of this part is UV and impact resistant. Each cover is provided with all required mounting screws and gaskets.

#### **CERTIFICATIONS**

This part is certified to the following standards:

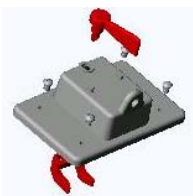
Canadian Standards Association-CSA C22.2 No. 18-98

Underwriter's Laboratories-UL 514C

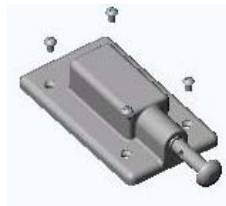
These covers are listed for use in wet locations with both CSA and UL.

#### **FITTING DIMENSIONS**

Cover dimensions are available upon request.



RVSC15/10  
Toggle Switch Cover



RVPT15/10  
Plunger Switch Cover



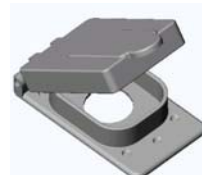
RWTG15/10  
Toggle



RWDR15/10, RWDR15/10W  
Duplex Receptacle, Duplex Rec.-White



RWGF15/10, RWGF15/10W  
Ground Fault Receptacle, GF Receptacle-White



RWTL15, RWTL20, RWTL30, RWTL50  
Single Receptacle-15, 20, 30, 50 Amp

Prepared: February 12, 2009

By: S. Scott

Revised: N/A