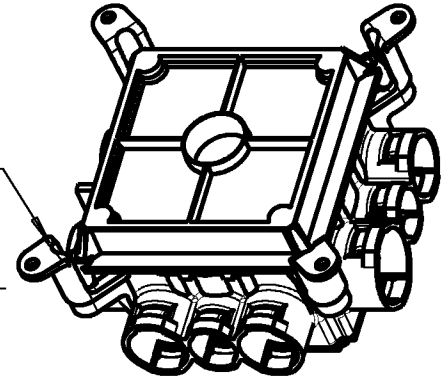
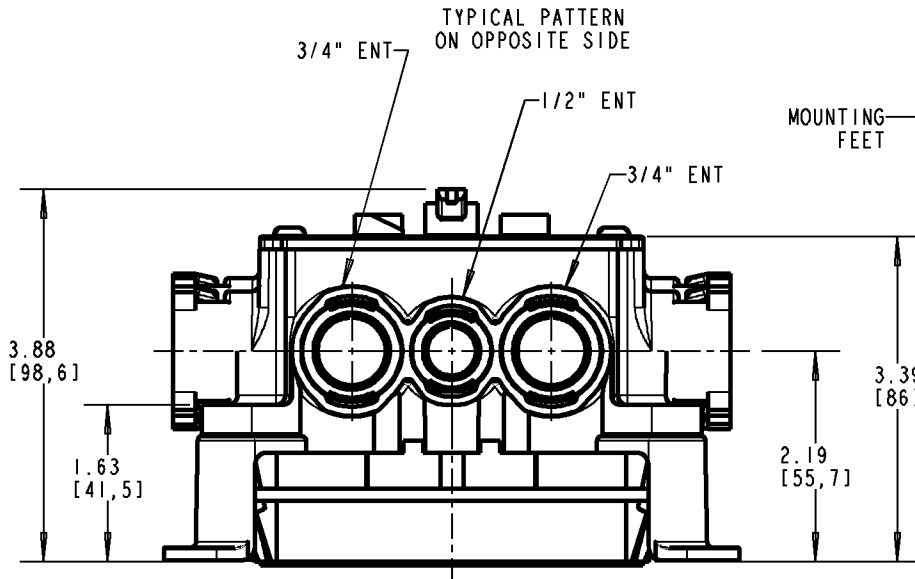
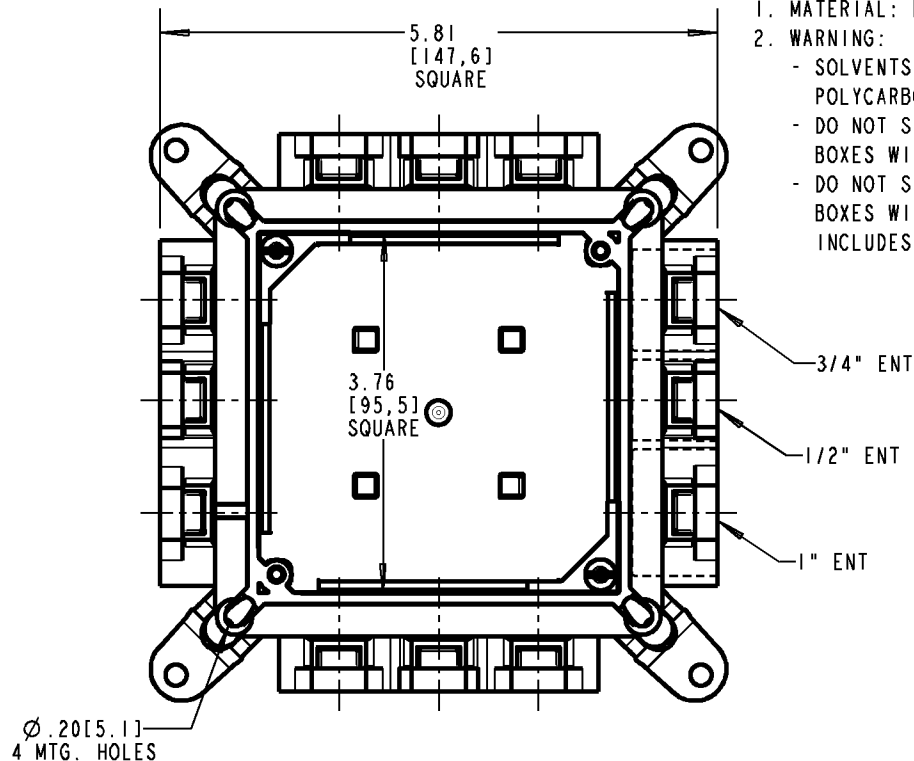


# Carlon®



## NOTES:

1. MATERIAL: BLUE THERMOPLASTIC (POLYCARBONATE).
2. WARNING:
  - SOLVENTS CANNOT BE APPLIED TO ANY POLYCARBONATE ELECTRICAL BOXES.
  - DO NOT SPRAY PAINT POLYCARBONATE ELECTRICAL BOXES WITH ANY SOLVENT-BASED PAINT.
  - DO NOT SPRAY PAINT POLYCARBONATE ELECTRICAL BOXES WITH SPRAY PAINT APPLICATION WHICH INCLUDES ANY SOLVENT.



PART NUMBER	ADDITIONAL (4) MOUNTING FEET
A863-4SQ	NO
A863-4SQF	YES

## GENERAL NOTES

1. ALL DIMENSIONS ARE FOR REFERENCE ONLY.
2. DIMENSIONS IN BRACKETS [ ] ARE IN METRIC UNITS.

## REVISIONS

F SEE ERN 2017021 FOR APPROVAL SIGNATURES & RELEASE DATE.  
PROJECT NO: 5AM000003

DESCRIPTION:

4" SQ. MUDBOX

ORIGINAL PROJECT NO / ( ERN NO )  
/ ( )

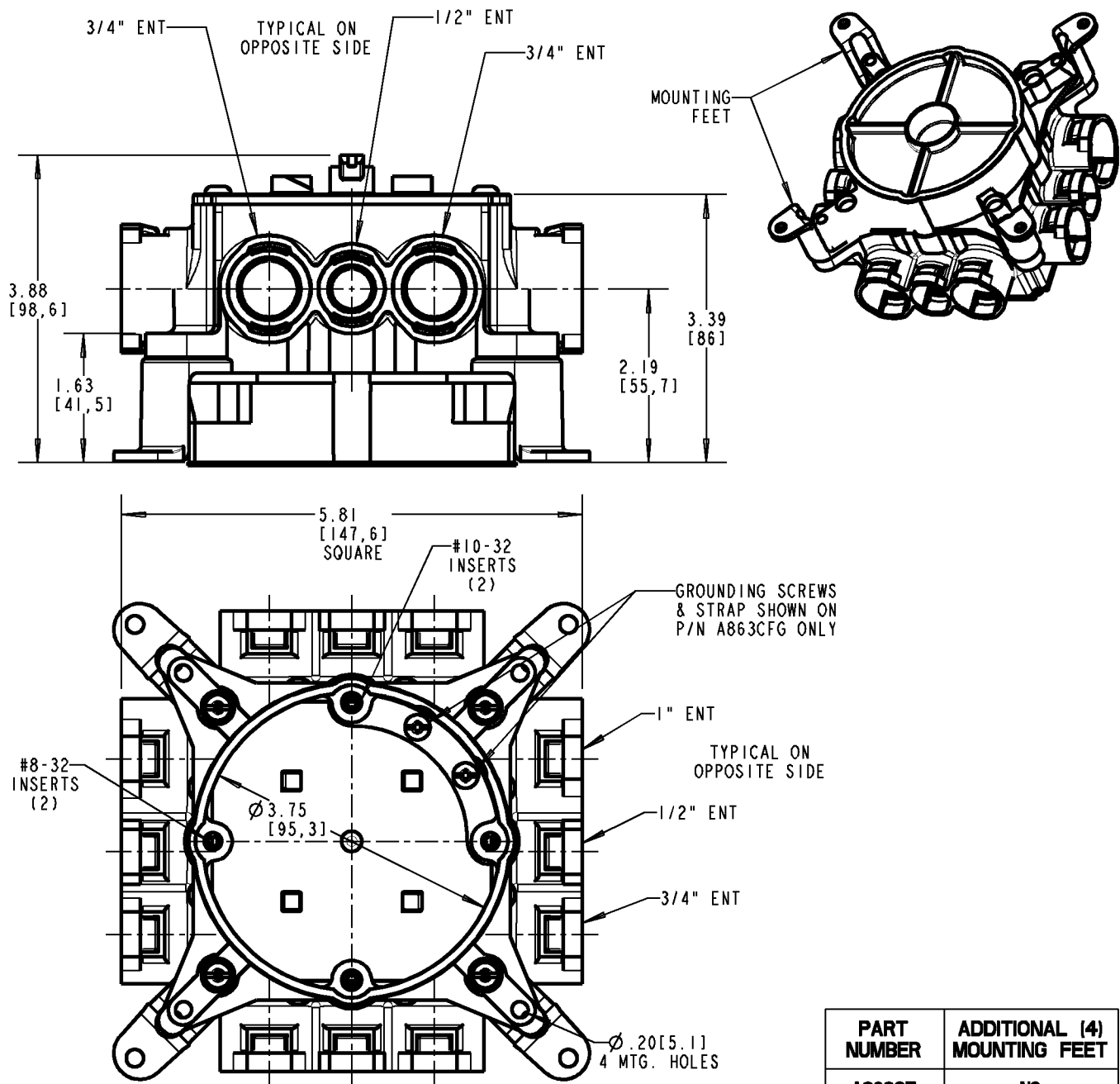
SHEET NO:  
1 OF 5

REV. NO:  
F

DRAWING NO:  
WSD-AC04391

**Thomas & Betts**  
www.tnb.com

# Carlon®



## NOTES:

1. MATERIAL IS BLUE THERMOPLASTIC (POLYCARBONATE).
2. P/N A863CF IS WITHOUT GROUND.
3. BOX IS UL LISTED FOR FIXTURE SUPPORT UP TO 50 LBS.
4. BOX IS UL LISTED FOR CEILING FAN SUPPORT UP TO 35 LBS.
5. TWO #8-32 SCREWS SUPPLIED WITH BOX FOR MOUNTING CEILING FAN.
6. WARNING:
  - SOLVENTS CANNOT BE APPLIED TO ANY POLYCARBONATE ELECTRICAL BOXES.
  - DO NOT SPRAY PAINT POLYCARBONATE ELECTRICAL BOXES WITH SOLVENT-BASED PAINT.
  - DO NOT SPRAY PAINT POLYCARBONATE ELECTRICAL BOXES WITH SPRAY PAINT APPLICATION WHICH INCLUDES ANY SOLVENT.

PART NUMBER	ADDITIONAL (4) MOUNTING FEET
A863CF	NO
A863CFG	NO
A863CFF	YES
A863CFGF	YES

**Thomas & Betts**  
www.tnb.com

DESCRIPTION:

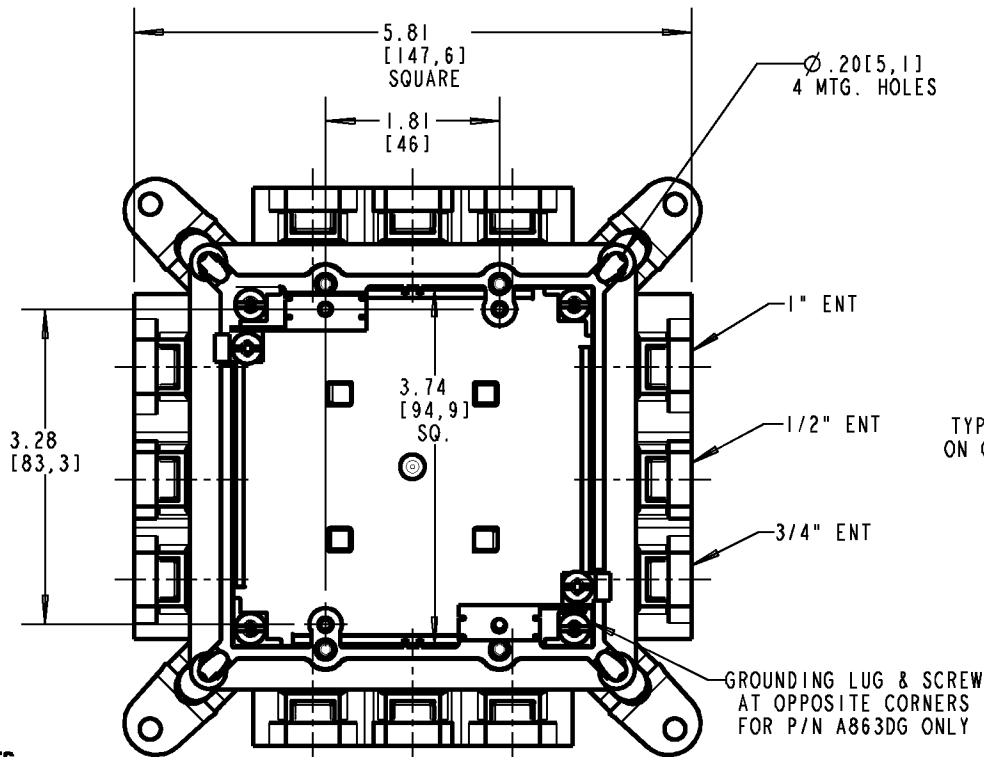
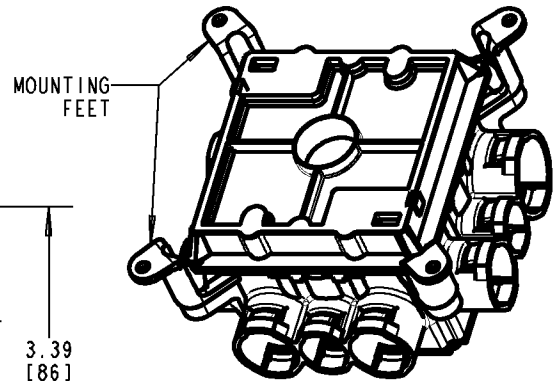
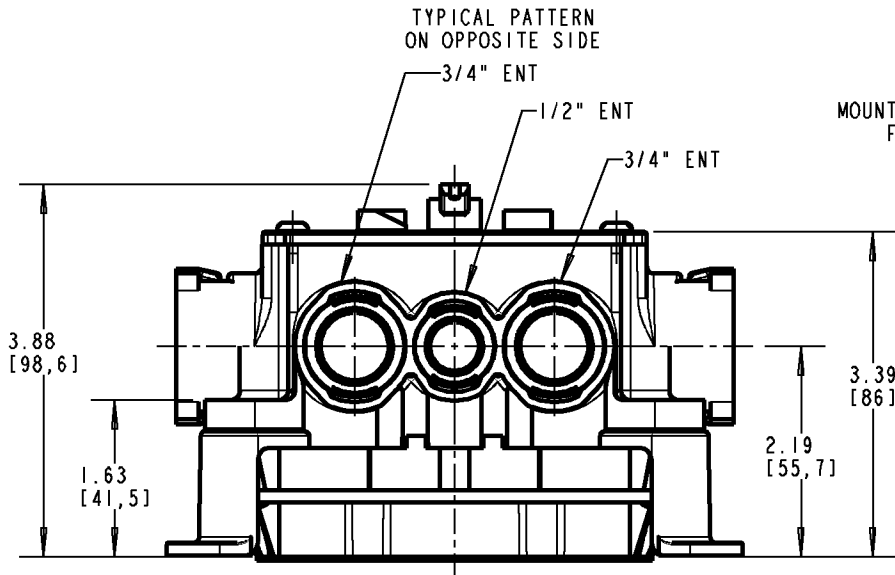
**CEILING FAN &  
FIXTURE SUPPORT MUDBOX**

SHEET NO:  
**2 OF 5**

REV. NO:  
**F**

DRAWING NO:  
**WSD-AC04391**

# Carlon®



## NOTES:

1. MATERIAL IS BLUE THERMOPLASTIC (POLYCARBONATE).
2. P/N A863D IS WITHOUT GROUND.
3. WARNING:
  - SOLVENTS CANNOT BE APPLIED TO ANY POLYCARBONATE ELECTRICAL BOXES.
  - DO NOT SPRAY PAINT POLYCARBONATE ELECTRICAL BOXES WITH SOLVENT-BASED PAINT.
  - DO NOT SPRAY PAINT POLYCARBONATE ELECTRICAL BOXES WITH SPRAY PAINT APPLICATION WHICH INCLUDES ANY SOLVENT.

PART NUMBER	ADDITIONAL (4) MOUNTING FEET
A863D	NO
A863DG	NO
A863DF	YES
A863DGF	YES

**Thomas & Betts**  
www.tnb.com

DESCRIPTION:

**2 GANG MUDBOX**

SEE ERN 2017021  
FOR APPROVAL SIGNATURES  
& RELEASE DATE.  
PROJECT NO: 5AM000003

/ ( )

SHEET NO:

3 OF 5

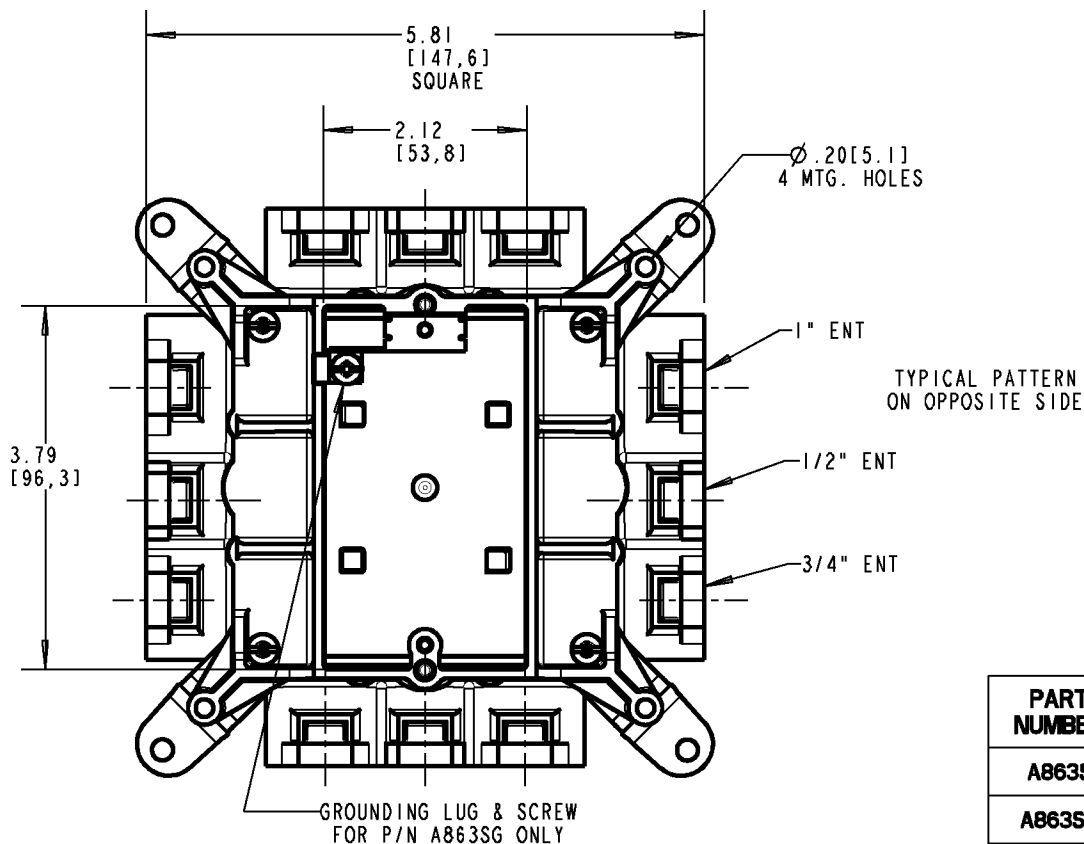
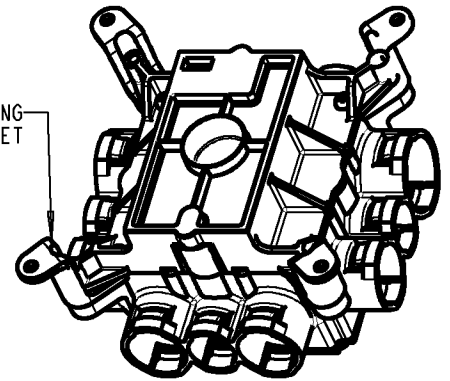
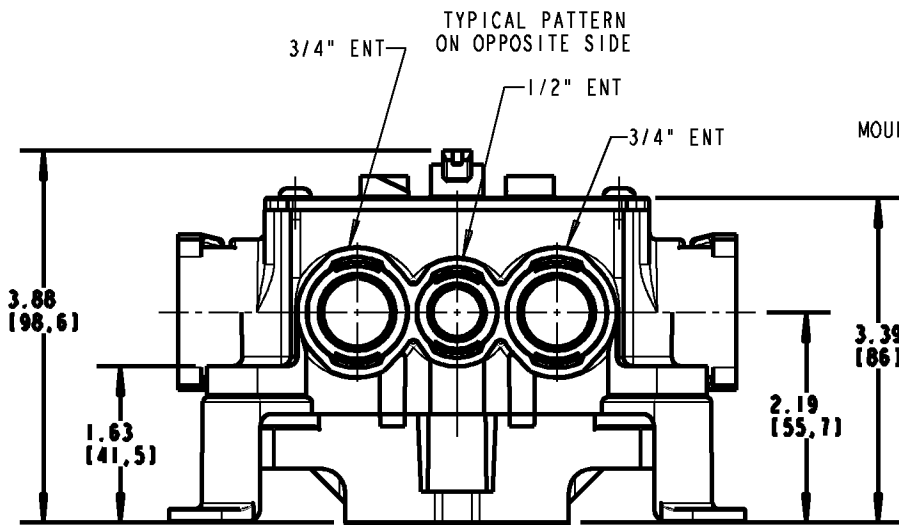
REV. NO:

**F**

DRAWING NO:

**WSD-AC04391**

# Carlon®



## NOTES:

1. MATERIAL IS BLUE THERMOPLASTIC (POLYCARBONATE).
2. P/N A863S IS WITHOUT GROUND.
3. WARNING:
  - SOLVENTS CANNOT BE APPLIED TO ANY POLYCARBONATE ELECTRICAL BOXES.
  - DO NOT SPRAY PAINT POLYCARBONATE ELECTRICAL BOXES WITH SOLVENT-BASED PAINT.
  - DO NOT SPRAY PAINT POLYCARBONATE ELECTRICAL BOXES WITH SPRAY PAINT APPLICATION WHICH INCLUDES ANY SOLVENT.

PART NUMBER	ADDITIONAL (4) MOUNTING FEET
A863S	NO
A863SG	NO
A863SF	YES
A863SGF	YES

**Thomas & Betts**  
www.tnb.com

DESCRIPTION:

**1 GANG MUDBOX**

SHEET NO:

4 OF 5

REV. NO:

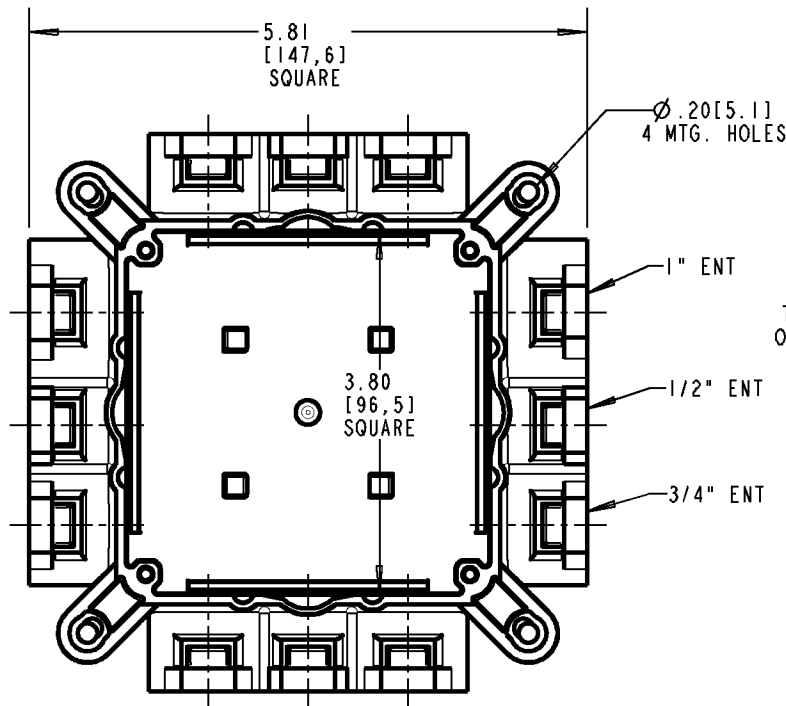
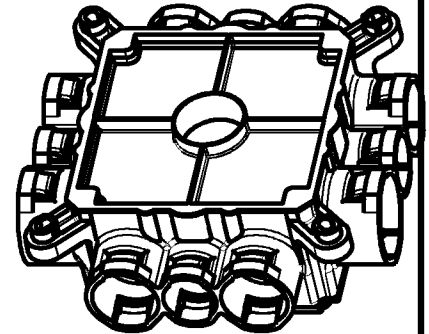
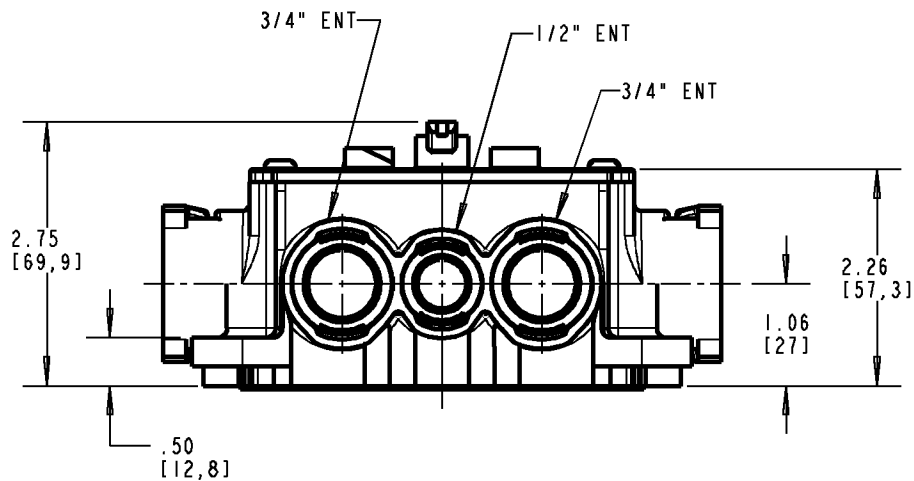
**F**

DRAWING NO:

**WSD-AC04391**

# Carlton®

TYPICAL PATTERN  
ON OPPOSITE SIDE



## NOTES:

1. MATERIAL IS BLUE THERMOPLASTIC (POLYCARBONATE).
2. WARNING:
  - SOLVENTS CANNOT BE APPLIED TO ANY POLYCARBONATE ELECTRICAL BOXES.
  - DO NOT SPRAY PAINT POLYCARBONATE ELECTRICAL BOXES WITH SOLVENT-BASED PAINT.
  - DO NOT SPRAY PAINT POLYCARBONATE ELECTRICAL BOXES WITH SPRAY PAINT APPLICATION WHICH INCLUDES ANY SOLVENT.

PART  
NUMBER

A863BC

**Thomas & Betts**  
www.tnb.com

DESCRIPTION:

**SHALLOW 4" SQ. MUDBOX**

SHEET NO:

5 OF 5

REV. NO:

**F**

DRAWING NO:

**AC04391**