

## ENT Accessories

### Transition Adapters

#### Male ENT to Schedule 40 PVC Conduit

CARLON EXCLUSIVE...Carlson Male ENT to Schedule 40 PVC Conduit Transition Adapters are designed to connect Schedule 40 conduit to Carlson Flex-Plus® Blue™ ENT boxes and fittings. Simply solvent cement the PVC adapter to the Schedule 40 conduit and snap the adapter into the Carlson's "Quick Connect" snap-in connector on the box or fitting. Carlson Male ENT to Schedule 40 Adapters are concrete-tight and available in sizes 1/2 in., 3/4 in. and 1 in.



Cat. No.	Size	Std. Ctn. Qty.	Std. Ctn. Wt. (lb.)
A263D	1/2 ENT to 1/2 Sch. 40	100	2.4
A263E	3/4 ENT to 3/4 Sch. 40		3.2
A263F	1 ENT to 1 Sch. 40		4.5

#### ENT to EMT

Carlson ENT to EMT Transition Adapters are designed to easily transition from Carlson Flex-Plus® Blue™ ENT to EMT using Carlson's "Quick Connect" snap-in design. The EMT is held securely in place using the small screw provided. This helps prevent the EMT from slipping/shifting out of the adapter. All ENT to EMT adapters are manufactured out of polycarbonate material to provide extra strength and durability. They're concrete-tight and available in sizes 1/2 in., 3/4 in. and 1 in.



Cat. No.	Size	Std. Ctn. Qty.	Std. Ctn. Wt. (lb.)
A245D	1/2 ENT to 1/2 EMT	100	3.4
A245E	3/4 ENT to 3/4 EMT		4.1
A245F	1 ENT to 1 EMT		5.4

#### Reducer

CARLON EXCLUSIVE...Carlson ENT Reducers are designed to provide an easy transition from 1 in. Carlson ENT to 3/4 in. ENT or from 3/4 in. Carlson ENT to 1/2 in. ENT. They're concrete-tight and manufactured out of polycarbonate material to provide extra strength and durability. Carlson ENT Reducers provide flexibility while on the jobsite by minimizing the need to carry size specific boxes and fittings. Carlson ENT Reducers provide the versatility to convert Carlson fittings and boxes to many different sizes and configurations.



Cat. No.	Size (in.)	Std. Ctn. Qty.	Std. Ctn. Wt. (lb.)
A273DE	3/4 to 1/2	100	3.2
A273EF	1 to 3/4		2.4

## ENT Accessories

### Quick Connect Adapters and Couplings

- Carlton One-Piece ENT Quick Connect Couplings, Threaded Adapters and Snap-In Terminator Adapters are suitable for damp locations. Quick Connect Couplings and Threaded Adapters are concrete-tight when used with Carlton ENT.
- All sizes of rigid nonmetallic conduit fittings are compatible with ENT when using ENT cement
- Rigid nonmetallic conduit fittings are recommended for use with Carlton 1-1/4 in. – 2 in. Flex-Plus Blue ENT
- Use of ENT Blue Quick-Set Cement is required. See page I67 for details.
- When One-Piece Quick Connect Snap-In Terminator Adapters are installed in a concrete application, Carlton's flat sealing washers must be used on the box connection ends

### Couplings



Cat. No.	Size (in.)	Std. Ctn. Qty.	Std. Ctn. Wt. (lb.)
A240D	1/2	150	2.90
A240E	3/4	100	3.00
A240F	1	50	2.30



### Threaded Adapters



Cat. No.	Size (in.)	Std. Ctn. Qty.	Std. Ctn. Wt. (lb.)
A243DC	1/2	150	2.55
A243EC	3/4	100	2.30
A243FC	1	50	2.00



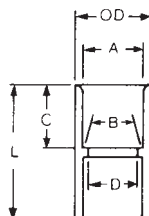
Cat. No.	Size (in.)	Std. Ctn. Qty.	Std. Ctn. Wt. (lb.)
A253D	1/2	150	2.70
A253E	3/4	100	2.90
A253F	1	50	2.30



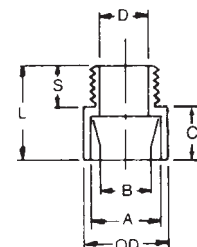
### Rigid Nonmetallic Conduit Adapters and Couplings



All socket fittings should be attached using Carlton solvent cement. Using Carlton fittings with Carlton nonmetallic conduit insures system integrity. Socket type for joining nonmetallic conduit.



For adapting nonmetallic conduits to boxes threaded fittings, metallic systems. Male threads on one end, socket end on other.



### Standard Couplings



Cat. No.	Size (in.)	Std. Ctn. Qty.	A	B	Min. D (in.)	Max. O.D. (in.)	C	L	Std. Ctn. Wt. (lb.)
			Typical (in.)				Typical (in.)		
CE940DR-CTN	1/2	150	0.852	0.836	0.728	1-7/64	11/16	1-1/2	4.1
CE940ER-CTN	3/4	100	1.064	1.046	0.840	1-5/16	3/4	1-5/8	4.4
CE940F-UPC	1	50	1.330	1.310	1.210	1-5/8	15/16	2	3.5
E940G	1-1/4	30	1.677	1.655	1.535	1-63/64	1	2-1/8	3.5
E940H	1-1/2	25	1.918	1.894	1.755	2-15/64	1-1/8	2-3/8	3.9
E940J	2	30	2.393	2.369	2.190	2-47/64	1-3/16	2-1/2	5.3

### Male Terminal Adapter

Cat. No.	Size (in.)	Std. Ctn. Qty.	A	B	Min. D (in.)	Max. O.D. (in.)	C	S	L	Std. Ctn. Wt. (lb.)
			Typical (in.)				Typical (in.)			
E943D	1/2	150	0.852	0.836	0.597	1-1/8	5/8	9/16	1-5/16	2.8
E943E	3/4	100	1.064	1.046	0.800	1-11/32	3/4	9/16	1-3/8	3.5
E943F	1	50	1.330	1.310	1.018	1-5/8	1	11/16	1-25/32	3
E943G	1-1/4	30	1.677	1.655	1.332	2-1/32	1	3/4	1-15/16	4
E943H	1-1/2	25	1.918	1.894	1.566	2-5/32	1-3/16	3/4	2-1/16	2.5
E943J	2	30	2.393	2.369	2.000	2-21/32	1-3/16	3/4	2-1/8	7