



# SmartMate

## SMARTMATE ELE BALLAST (1) 38W 2D (4-PIN) 120-277V

Offering maximum versatility, the Philips Advance family of SmartMate ballasts for 4-pin compact fluorescent lamps drive a broad range of quad and triple-tube, circline, 2D, and long twin-tube lamps. SmartMate ballasts' energy efficient design, compact and lightweight housing, and user-friendly features make these ballasts an ideal choice for fixture manufacturers, retrofitters, and MRO replacement.

### Product data

General Information	
Lamp Type	CFS38W/GR10Q
Number of Lamps	1 piece/unit
Ballast Type	Electronic Fluorescent
Base Model	ICFID38HILD
Suitable For Outdoor Use	Yes
Automatic Restart	Yes

Operating and Electrical	
Input Voltage	120 to 277 V
Input Frequency	50 to 60 Hz
Total Harmonic Distortion USA	10 %
Ignition Method	Programmed Start
Crestfactor (Nom)	1.5
Ignition Time (Nom)	1.5 s
Ballast Factor (Nom)	0.85
Power Factor (Nom)	0.98
Input Current (Max)	0.26 A
Input Current (Min)	0.11 A
Input Power (Nom)	31-31 W

Rated Lamp Power	38 W
------------------	------

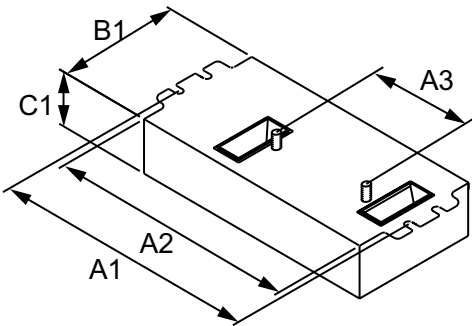
Wiring	
Color Input Terminals	Black and White
Color Output Terminals	RED, YEL & BLU
Wire Striplength	0.375 mm
Lamp Connection	Series
Wire Length by Color	No wires
Wire Gauge (Nom)	18AWG mm
Wire Type	Solid
Remote Wiring Configuration Allowed	Yes
Tandem Wiring Configuration Allowed	No
Through Wiring Configuration Allowed	No
Max Ballast-Lamp Distance Remote Wiring	15'
Max Ballast-Lamp Distance Tandem Wiring	NA
Max Ballast-Lamp Distance Through Wiring	NA
Connector Type	Poke-In

Temperature	
T-Case Maximum (Nom)	75 °C

Mechanical and Housing	
Housing Material	Metal–Plastic
Housing	H1
Housing Dimensions	4.98" x 2.4" x 0.98"
Approval and Application	
EMC Immunity Standard	FCC Non-Consumer
Approval Marks	CSA certificate UL certificate RoHS Compliant
Hum And Noise Level	A
UL Recognized	No

Product Data	
Order product name	SMARTMATE ELE BALLAST (1) 38W 2D (4-PIN) 120-277V
EAN/UPC - Product	781087029046
Order code	913710207202
Numerator - Quantity Per Pack	1
Numerator - Packs per outer box	20
Material Nr. (12NC)	913710207202
Net Weight (Piece)	0.168 kg

Dimensional drawing



Product	A1	A2	A3	B1	C1
SMARTMATE ICFID38H1LD35M	4.60 in	4.20 in	2.00 in	2.40 in	0.98 in

ELE BALLAST (1) 38W 2D (4-PIN) 120-277V

