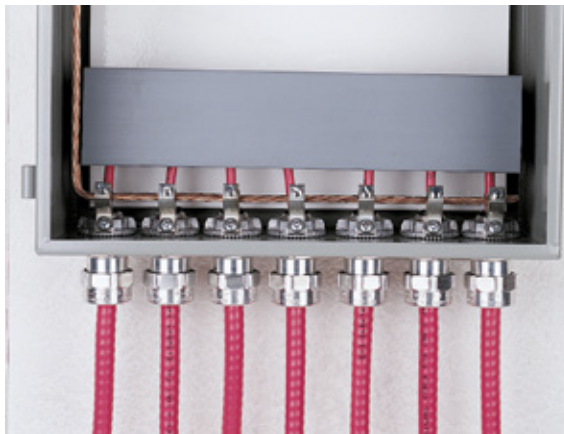


Bond Star grounding locknut



Extreme grounding for data and control applications.

For data and control panel applications or any other installation that is highly sensitive to floating voltage differences, the complete range of Star Teck Extreme fittings ($\frac{1}{2}$ in. to 4 in. hub sizes) is also available with a 3-position grounding locknut including an open-sided lay-in lug made of tin-plated aluminum. With a #4–14 AWG wire range, the CSA and UL approved grounding lug can be positioned on the most accessible of the three grounding locations on the circumference of the installed grounding locknut. When installation requires multiple incoming cables, each individual lug terminating the connections can be “daisy chain” bonded to the grounding bus, ensuring the same electrical potential throughout the cables.

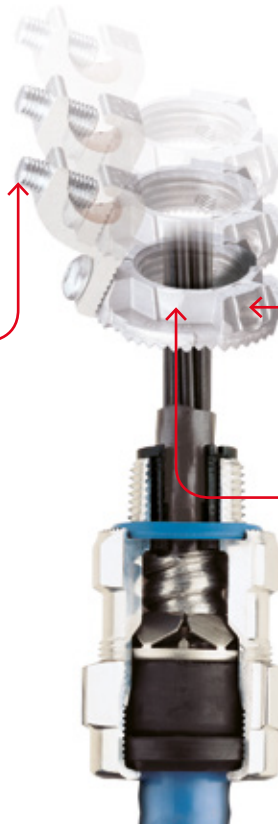
Bond Star grounding locknuts can also be used with the complete range of ABB Teck cable fittings. To order individually, use the catalogue numbers shown on page 22.



Bond Star
Open-sided lay-in grounding lug is CSA and UL approved and has a #4–14 AWG wire range.

Bond Star
Choice of three grounding locations on the circumference of the installed grounding locknut facilitates installation of grounding lug.


Exclusive Bond Star
grounding locknut is ideal for any application that is sensitive to floating voltage differences.



Bond Star grounding locknut


Star Teck Extreme fittings with Bond Star grounding locknut



	Cat. no.	Hub size (in.)	Obsoleted items
	STE050-DATAGRL	½	STE050-DATAGR
	STE050GRL	½	STE050GR
	STE075GRL	¾	STE075GR
	STE100GRL	1	STE100GR
	STE125GRL	1¼	STE125GR
	STE150GRL	1½	STE150GR
	STE200GRL	2	STE200GR
	STE250GRL	2½	STE250GR
	STE300GRL	3	STE300GR
	STE350GRL	3½	STE350GR
	STE400GRL	4	STE400GR

Bond Star grounding locknut with lay-in-lug



	Cat. no.	Size (in.)	Description
	L050GRL	½	Locknut with lay-in lug and screw
	L075GRL	¾	Locknut with lay-in lug and screw
	L100GRL	1	Locknut with lay-in lug and screw
	L125GRL	1¼	Locknut with lay-in lug and screw
	L150GRL	1½	Locknut with lay-in lug and screw
	L250GRL	2½	Locknut with lay-in lug and screw
	L300GRL	3	Locknut with lay-in lug and screw
	L350GRL	3½	Locknut with lay-in lug and screw
	L400GRL	4	Locknut with lay-in lug and screw

Lay-in lug



	Cat. no.	Screw	For hub sizes (in.)
	GRL-LUG1032	#10, 32 TPI	½, ¾, 1
	GRL-LUG1/4-20	¼, 20 TPI	1¼ 6