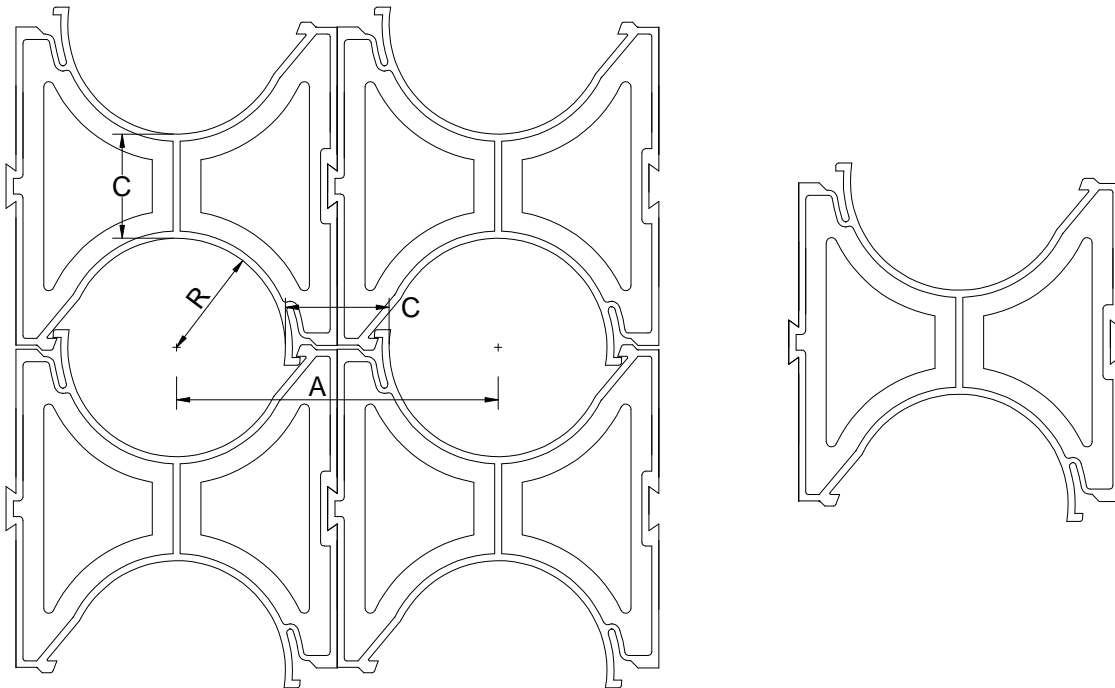


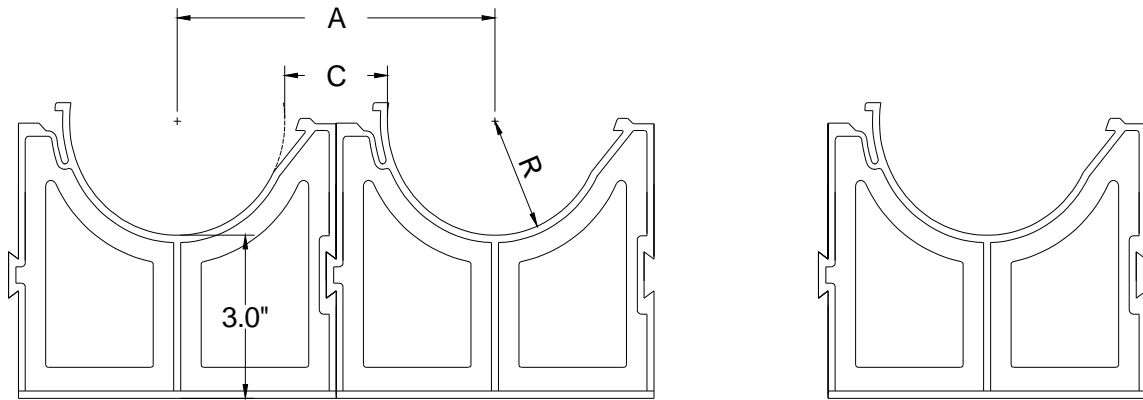
TECHNICAL SPECIFICATION**Royal Duct Spacers
Types RIS, RBS****SCOPE**

This specification covers the dimensions of Royal Intermediate and Base Spacers for 4" PVC Duct Pipe. These spacers are manufactured to be used with PVC Duct that meets CSA C22.2 No. 211.1.

PART DIMENSIONS

Part Number	R (in)	A (in)	C (in)
RIS4015	2.1	5.7	1.5
RIS4020	2.1	6.2	2.0
RBS4015	2.1	5.7	1.5
RBS4020	2.1	6.2	2.0

**RIS-Intermediate Spacer**



RBS-Base Spacer