

TYPE SS SSK SSKC

Features

- Watertight EPDM rubber splice cover
- Tapered ends
- Ready for installation
- Type SS is cover only supplied with lubricant
- Type SSK kit is supplied with both connector and lubricant
- Connector rated for 600 volts, 90° C

Benefits

- No taping required. Suitable for direct burial
- Fits a wide range of conductor sizes
- Not a mold, can be used in any type of weather. (moisture and humidity are not a factor)
- Can be used with standard aluminum or copper compression from 500kcmil - 6. Lubricant permits easy insertion of conductors into sleeve.
- Supplied with dual-rated mechanical splice connector with a wire range of 350kcmil - 6
- Ensures reliability

C

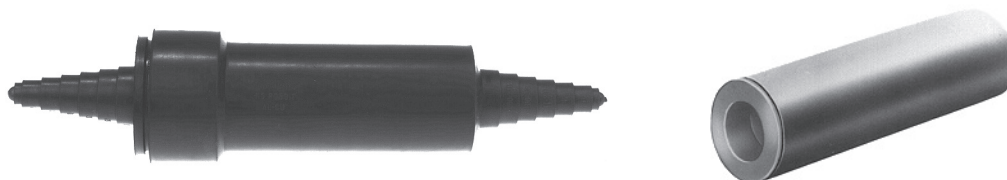


Fig. 1



Fig. 2

| Catalog Number | Figure No. | Wire Range | | Dimensions |
|----------------|------------|------------------|---------------------|------------|
| | | Bolted Connector | Compression Sleeves | L |
| SSK-350-Z | 1 | 350kcmil-6 | — | 5-1/2 |
| SS-350-Z | 2 | 350kcmil-6 | 500kcmil-6 | 5-1/2 |



| Catalog Number | Connector Catalog Number | Wire Size | Wire Range when Installed with IDT 12-Tool |
|----------------|--------------------------|-----------|--|
| SSKC-6-Z | AS-6 | 6 | 6 |
| SSKC-4-Z | AS-4 | 4 | 4-6 |
| SSKC-2-Z | AS-2 | 2 | 2-6 |
| SSKC-1/0-Z | AS-1/0 | 1/0 | 1/0-1 |
| SSKC-2/0-Z | AS-2/0 | 2/0 | 2/0-1 |
| SSKC-3/0-Z | AS-3/0 | 3/0 | 3/0-1 |
| SSKC-4/0-Z | AS-4/0 | 4/0 | 4/0-1 |
| SSKC-250-Z | AS-250 | 250kcmil | 250kcmil-1/0 |

All wire sizes, unless noted otherwise, are American Wire Gauge (AWG)