

LED-HWB-24V-24W

24W Indoor LED Hardwire Box, 24V
Cabinet, Cove & Display

| Job Information | | |
|-----------------|--|------|
| Project Name | | Type |
| Location | | |
| Quantity | | Date |
| Contact/Phone | | |
| Notes | | |

Features

Features & Benefits

- Class II power supply.
- Short-circuit protection.
- Over-current protection.
- Over-voltage protection.
- Open-circuit protection.
- Constant voltage.

AC Input Details

- AC input voltage range: 100-240V.
- AC input current: 1500mA.
- Input frequency range: 50/60Hz.
- No load power consumption: <0.5W.
- Leakage current: <0.25mA.

DC Output Details

- DC voltage: 24V.
- DC current: 1000mA.
- Working efficiency:
 - * > 80% @ 115V AC.
 - * > 80% @ 230V AC.

Environmental Requirements

- Working temperature: 0-40%
- Operating humidity: 5-90% RH.
- Storage humidity: 5-90% RH.
- Suitable for indoor use only.

Linkage

- The LED driver is equipped with a 2.1 DC jack and 55" of 18AWG SPT cord on the output side for linking 24V LED tape and strip lights.
- Provided with push-in wire connectors for fast and easy wiring.

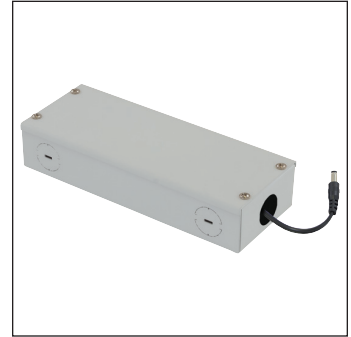
Construction

- 20 gauge painted steel box with dedicated compartment for hard-wiring (120V).
- Eight 7/8" knockouts for maximum flexibility in positioning and in-line installation.

Compatibility

Compatible with all Liteline® 24 volt LED lighting products.

| SPECIFICATION | |
|-------------------|-----------------------------|
| Application | Undercabinet |
| Approved Location | Dry |
| Certification | cULus listed (driver) |
| Classification | Class 2 |
| Colour | WH |
| Dimming | No |
| Link Connector | DC 2.1 |
| Max. Op. Temp. | 40°C (104°F) |
| Min. Start Temp. | 0°C (32°F) |
| Power Factor | >0.5 |
| Power Supply Type | Constant Voltage |
| Input | 100-240V, 50/60Hz, 1.5A max |
| Output | 24V DC, 1A |
| Warranty | 3 Years |
| Wattage | 24W |

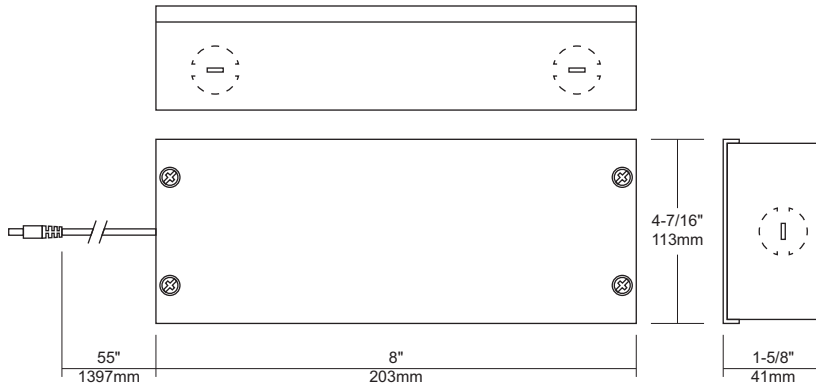


Description

LED-HWB-24V-24W is a Class 2, constant voltage, 24V, 24W max. LED driver with hardwire box; for use with 24V LED lighting products. Suitable for indoor use only.



Notes: Accessories should be ordered separately. For additional options please consult your Liteline representative. Due to our continued efforts to improve our products, product specifications are subject to change without notice.



Ordering Guide



LED-HWB-24V-24W
24W indoor LED hardwire box, 24V.

Accessories



LED-SP-4
Optional harness for up to 4 runs, 24V.

