

# LED-HWB-24V-60W

60W Indoor LED Hardwire Box, 24V  
Cabinet, Cove & Display

Job Information		
Project Name		Type
Location		
Quantity		Date
Contact/Phone		
Notes		

## Features

### Features & Benefits

- Class II power supply.
- Short-circuit protection.
- Over-current protection.
- Over-voltage protection.
- Open-circuit protection.
- Constant voltage.

### AC Input Details

- AC input voltage range: 100-240V.
- AC input current: 1500mA.
- Input frequency range: 50/60Hz.
- No load power consumption: <0.5W.
- Leakage current: <0.25mA.

### DC Output Details

- DC voltage: 24V.
- DC current: 2500mA.
- Working efficiency:
  - \* > 72% @ 100V AC.
  - \* > 78% @ 220V AC.

### Environmental Requirements

- Working temperature: 0-40%
- Operating humidity: 5-90% RH.
- Storage humidity: 5-90% RH.
- Suitable for indoor use only.

### Linkage

- The LED driver is equipped with a 2.1 DC jack and 55" of 18AWG SPT cord on the output side for linking 24V LED tape and strip lights.
- Provided with push-in wire connectors for fast and easy wiring.

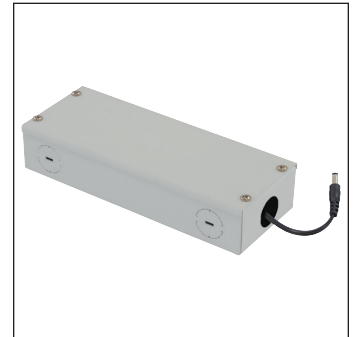
### Construction

- 20 gauge painted steel box with dedicated compartment for hardwiring (120V).
- Eight 7/8" knockouts for maximum flexibility in positioning and in-line installation.

### Compatibility

Compatible with all Liteline® 24 volt LED lighting products.

SPECIFICATION	
Application	Undercabinet
Approved Location	Dry
Certification	cULus listed (driver)
Classification	Class 2
Colour	WH
Dimming	No
Link Connector	DC 2.1
Max. Op. Temp.	40°C (104°F)
Min. Start Temp.	0°C (32°F)
Power Factor	>0.5
Power Supply Type	Constant Voltage
Input	100-240V, 50/60Hz, 1.5A max
Output	24V DC, 2.5A
Warranty	3 Years
Wattage	60W

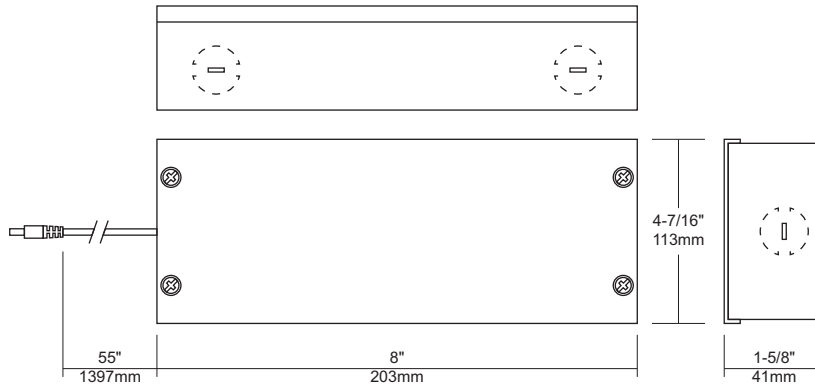


## Description

LED-HWB-24V-60W is a Class 2, constant voltage, 24V, 60W max. LED driver with hardwire box; for use with 24V LED lighting products. Suitable for indoor use only.



**Notes:** Accessories should be ordered separately. For additional options please consult your Liteline representative. Due to our continued efforts to improve our products, product specifications are subject to change without notice.



## Ordering Guide



### LED-HWB-24V-60W

60W indoor LED hardwire box, 24V.

## Accessories



### LED-SP-4

Optional harness for up to 4 runs, 24V.