

# MAAX SUBMITTAL SPECIFICATIONS

## Aiiki 6636

**MODEL NUMBER 102787**

DIMENSIONS: 66" x 36" x 24" Acrylic



Project : .....  
Contractor : .....  
MAAX Representative : ..... Tel : .....  
Date : .....

**www.maax.com**

Vivez l'expérience  
**MAAX®**  
Enjoy the experience

### STANDARD FEATURES

- Cube inspired lines with an urban touch and comfortable design
- Comfortable inclined backrests and maximized bathing well
- Drop-in installation with end drain
- Magnetic cushion available in black or white (optional)
- Magnet backed headrest for cushion. Factory installed only if cushion ordered on initial order


### OPTIONS

- Thermo-Acoustic system
- ABS trim kit for whirlpool and combined systems
- Two chromatherapy lights
- Flexible main hose for electronic control air massage - kit 15-ft. extension
- Lite deck
- Metal trim kit for Aerofeel

### UNIQUE FEATURES

- None

### SYSTEMS

 Aerofeel Chromatherapy

 Combined

Aerofeel/Hydrofeel

 Hydrofeel  Ozonator

### DOOR SELECTION

Combine with MAAX's complete shower door offering visit [www.maax.com](http://www.maax.com)

### CERTIFICATIONS

Maax products adhere to one or more of the following certifications:



2017-11-09

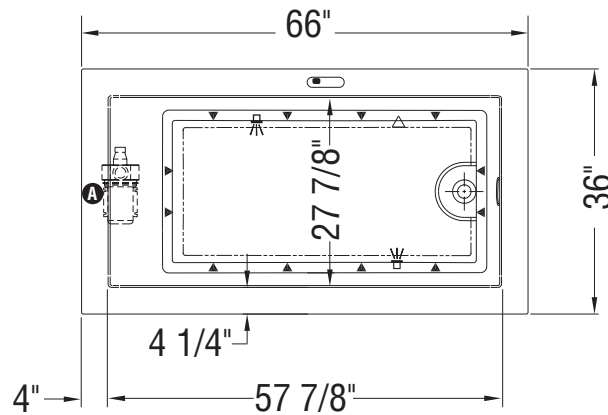
## MAAX SUBMITTAL SPECIFICATIONS

# Aiiki 6636

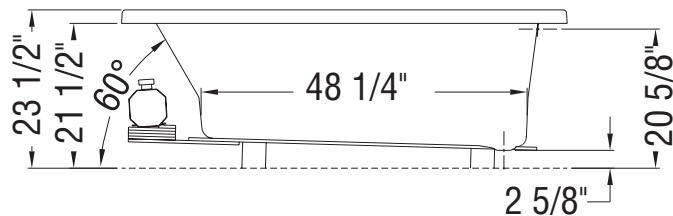
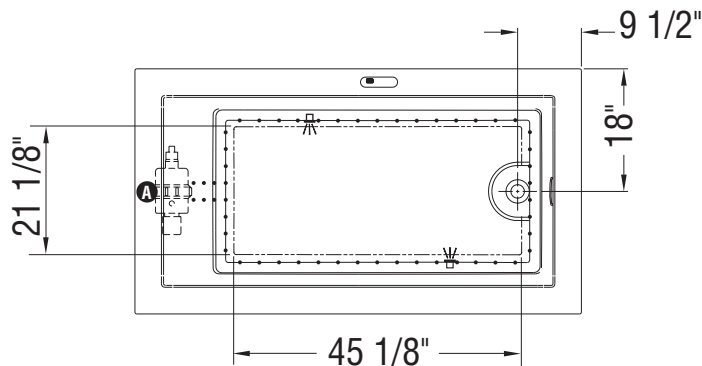
MODEL NUMBER 102787

## TECHNICAL DRAWINGS

WHIRLPOOL SYSTEM



AIR SYSTEM



**Note: Air backjets on same side as blower**

( ▲ ): Indicates whirlpool jets positioning

( △ ): Indicates suction positioning

( • ): Indicates airjets positioning

( 卐 ): Indicates chromatherapy light positioning

Bathtub base includes anti-vibration Neutra-Phone leg supports (not shown).

**All dimensions are approximate. Structure measurements must be verified against the unit to ensure proper fit.**

( A ): Indicates pump or blower positioning