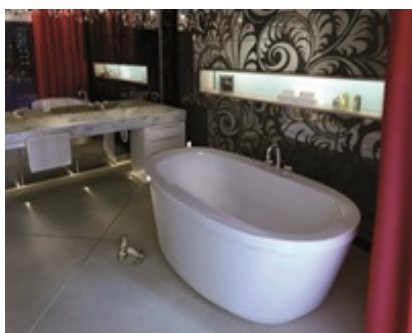


MAAX SUBMITTAL SPECIFICATIONS

Jazz F

MODEL NUMBER 105359

DIMENSIONS: 66" x 36" x 24" Acrylic



Project :
Contractor :
MAAX Representative : Tel :
Date :

www.maax.com

Vivez l'expérience
MAAX[®]
Enjoy the experience

STANDARD FEATURES

- Deep soak bathing for ultimate relaxation
- 2-piece freestanding bathtub with concealed seam
- Comfortable backrest and ample deck space for faucet installation
- Center drain and 4 adjustable leveling legs
- Above-the-Floor Rough (AFR) and F² Drain compatible

OPTIONS

- Foam pillow with 2 suction pads
- Two chromotherapy lights
- Flexible main hose for electronic control air massage - kit 15-ft. extension
- Metal trim kit for Aerofeel
- Waste and overflow 33" flexible neck
- Positioning template for Jazz freestanding installation

UNIQUE FEATURES

- 1 Tub - 2 Pieces
- 4 Adjustable Leveling Legs
- Compatible with F2 Drain

SYSTEMS

 Aerofeel

CERTIFICATIONS

Maax products adhere to one or more of the following certifications:



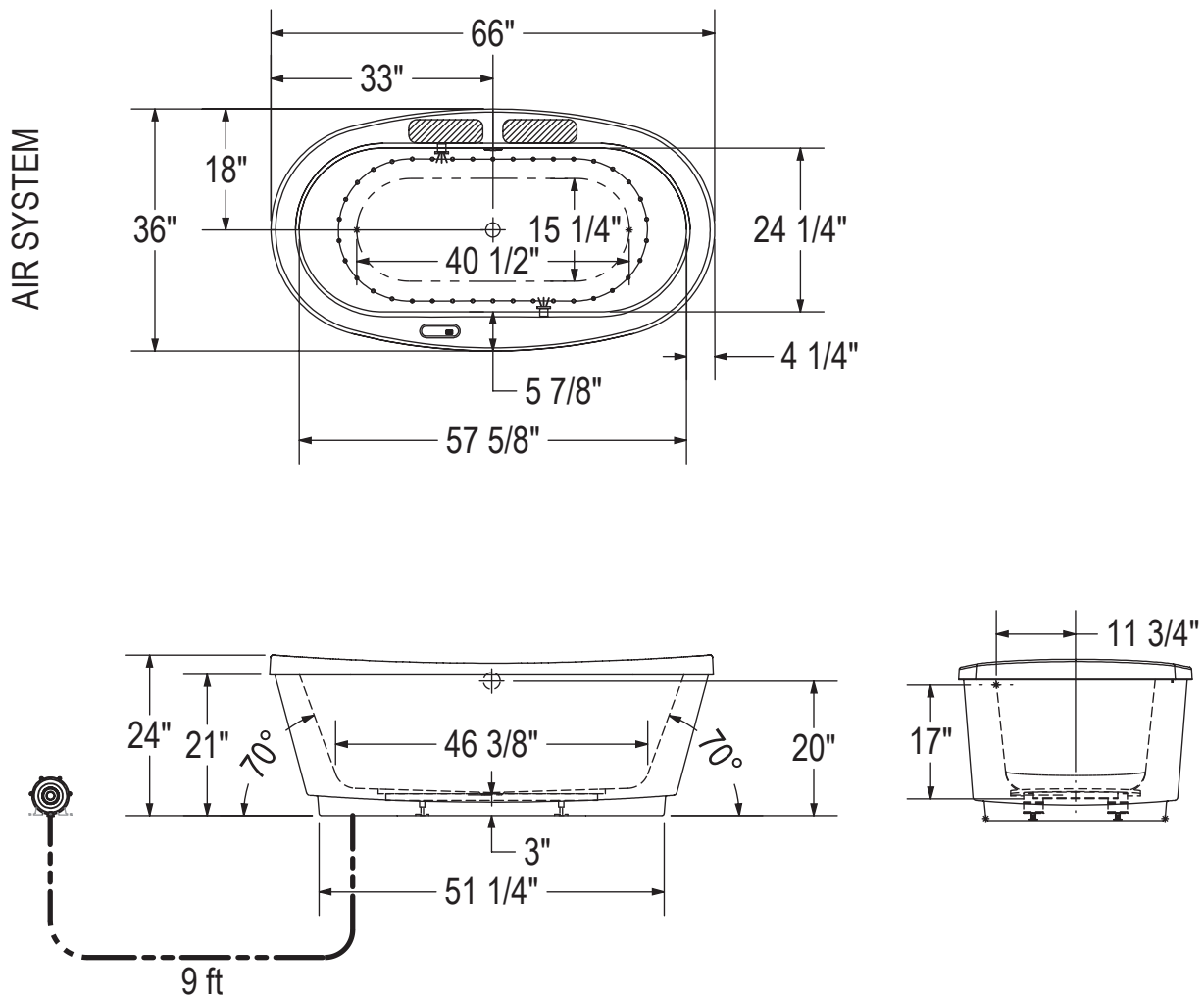
2017-11-09

MAAX SUBMITTAL SPECIFICATIONS

Jazz F

MODEL NUMBER 105359

TECHNICAL DRAWINGS



- (●) : Indicates Aerofeel airjets positioning
- (☼) : Indicates chromatherapy light positioning
- (▨) : Recommended faucet area 2 sections of 12" (L) x 3 1/2" (W).

Blower must be installed at a distance.

All dimensions are approximate. Structure measurements must be verified against the unit to ensure proper fit.