

MAAX SUBMITTAL SPECIFICATIONS

Exhibit 6032

MODEL NUMBER 105513

DIMENSIONS: 60" x 32" x 20" Acrylic



Project :
Contractor :
MAAX Representative : Tel :
Date :

www.maax.com

Vivez l'expérience
MAAX[®]
Enjoy the experience

STANDARD FEATURES

- Rectangular shape bathtub
- Drop-in or alcove installation with tiling flange
- Minimalist look with discreet armrests and textured floor
- End drain

OPTIONS

- One chromotherapy light
- Water heater assembly (factory installed)
- Metal trim kit for whirlpool and combined systems
- Metal trim kit for Air Push Control
- Cable-operated waste and overflow
- Foam pillow with 2 suction pads

UNIQUE FEATURES

- Tiling Flange

SYSTEMS

- MAAX Professional Whirlpool
- Aeroeffect **DOOR**
- Combined Whirlpool/Aeroeffect
- Chromotherapy **SELECTION**

Combine with MAAX's complete shower door offering visit www.maax.com

CERTIFICATIONS

Maax products adhere to one or more of the following certifications:



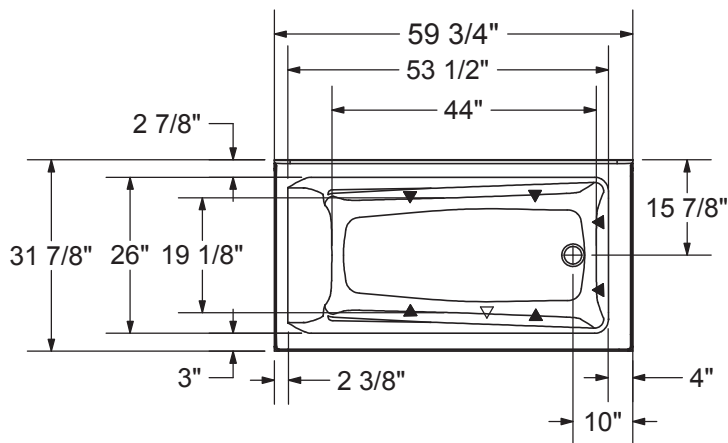
2017-11-09

MAAX SUBMITTAL SPECIFICATIONS

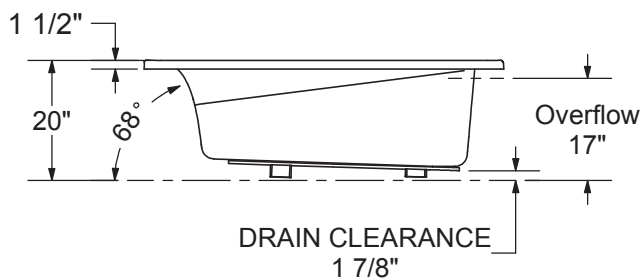
Exhibit 6032

MODEL NUMBER 105513

TECHNICAL DRAWINGS



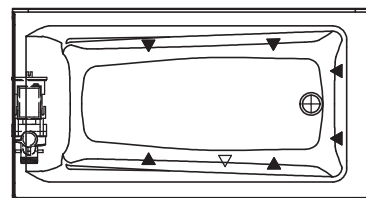
1" Single Integrated tiling
 flange (shown)
 2" Double Integrated tiling
 flange (not shown)
 Drop-in model (Shown)



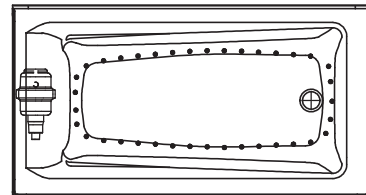
Wood support design may vary.
 Single Integrated tiling flange: 1" height x 1/4" thickness (shown)
 Double Integrated tiling flange: 2" height (not shown)

All dimensions are approximate.
 Structure measurement must be verified against the unit to ensure proper fit.

WHIRLPOOL SYSTEM



AIR SYSTEM



- (▲) : Indicates whirlpool jets positioning
- (△) : Indicates suction positioning
- (●) : Indicates airjets positioning