

Camelia TS-6032

Model number:	105915S
---------------	---------

Dimensions: 60" x 33" x 79"

Installation: Alcove

Material: Acrylic



Standard Features:

- Multi-piece tub shower
- Wide 3-level corner shelves
- Standard 12 inch colour-coordinated grab bar
- Comes with an access panel when equipped with a system
- Optional grab bars and removable seat available
- Unique feature: 3 inch Above-the-Floor

Product characteristics:

- Multi-Piece Unit
- Easy Installation
- Aging in place

Warranty:





25 Years

Standard colors:

 White (001)

Certifications

MAAX products adhere to one or more of the following certifications:



Recommended products (Visit our website for a complete list of our recommended doors)

No	Description
137511	Axial Square Tub Shield 34 x 58 in. 8 mm
137512	Axial Duo Tub Shield 42 x 58 in. 8 mm
137510	Axial Tub Shield 30 x 55 ½ in. 6 mm

Options (Visit our website for a complete list of our options)

No	Description
<input type="checkbox"/> OPT 20219-L	Left-hand Pivot grab bar on back wall
<input type="checkbox"/> OPT 20217-R	32" right-hand curved grab bar on back wall
<input type="checkbox"/> OPT 20217-L	32" left-hand curved grab bar on back wall
<input type="checkbox"/> OPT 10189	All walls reinforced
<input type="checkbox"/> OPT 20215	Removable, transfer seat with storage basket

Camelia TS-6032

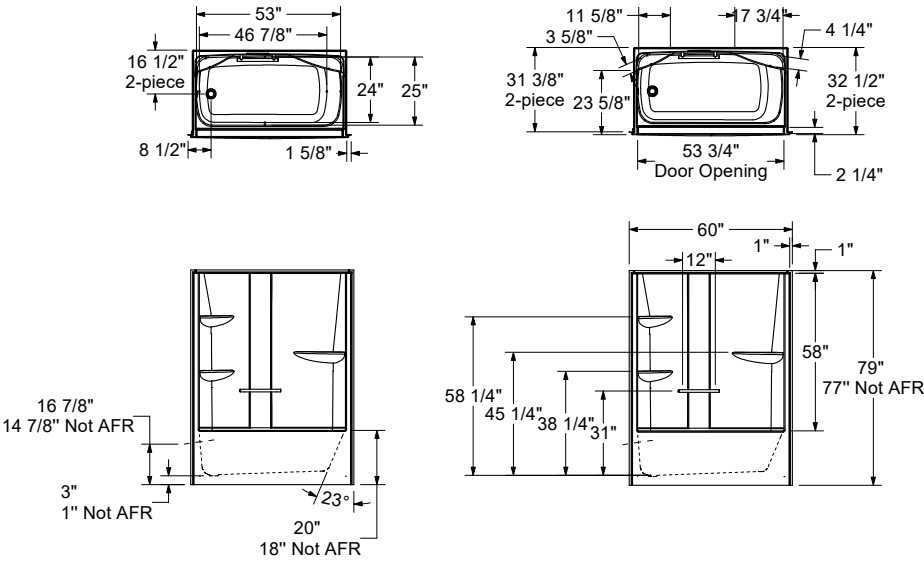
Model number:	105915S
---------------	---------

Dimensions: 60" x 33" x 79"

Installation: Alcove

Material: Acrylic

STANDARD
(Left shown)



Dimensions:

60 x 33 x 79 in.
(1524 x 838 x 2007 mm)

Water capacity:

49 gallons - 185 liters

Weight:

155 lbs - 70.4 kg

Deep sump height:

in. - mm

Drain location:

Left

Right

All dimensions are approximate. Structure measurements must be verified against the unit to ensure proper fit.

Project:	
Contractor:	
Representative:	
Date:	
Tel:	
Notes:	