

MAAX SUBMITTAL SPECIFICATIONS

Exhibit 6634

MODEL NUMBER 106219

DIMENSIONS: 66" x 34" x 18" Acrylic



Project :
Contractor :
MAAX Representative : Tel :
Date :

www.maax.com

Vivez l'expérience
MAAX[®]
Enjoy the experience

STANDARD FEATURES

- Rectangular shape bathtub
- Drop-in installation
- Minimalist look with discreet armrests and textured floor
- End drain

OPTIONS


- One chromotherapy light
- Water heater assembly (factory installed)
- Metal trim kit for whirlpool and combined systems
- Metal trim kit for Air Push Control
- Cable-operated waste and overflow
- Foam pillow with 2 suction pads


UNIQUE FEATURES

- Tiling Flange

SYSTEMS

 MAAX Professional Whirlpool

 Aeroeffect **DOOR**

 Combined
Whirlpool/Aeroeffect

 Chromotherapy **SELECTION**

Combine with MAAX's complete shower door offering visit www.maax.com

CERTIFICATIONS

Maax products adhere to one or more of the following certifications:



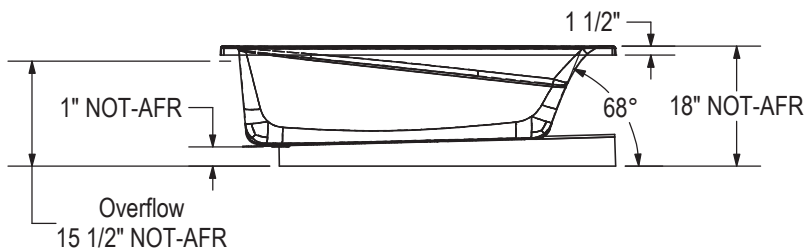
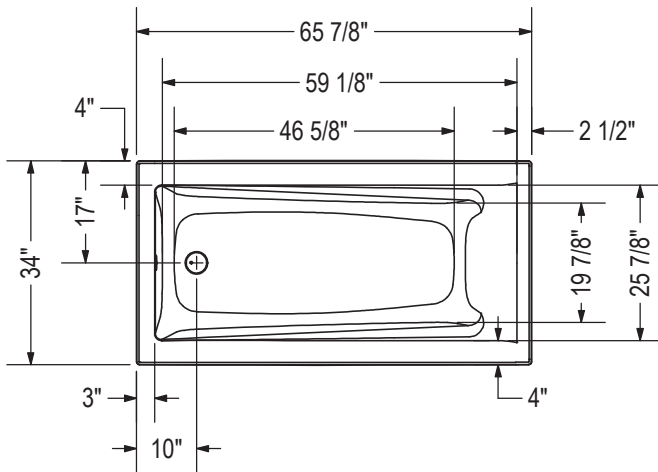
2017-11-09

MAAX SUBMITTAL SPECIFICATIONS

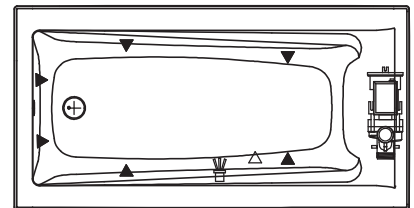
Exhibit 6634

MODEL NUMBER 106219

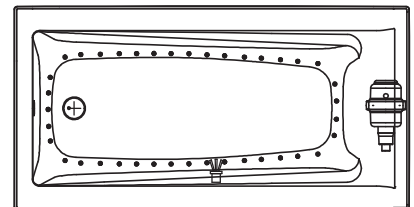
TECHNICAL DRAWINGS



WHIRLPOOL SYSTEM



AIR SYSTEM



All dimensions are approximate.
 Structure measurement must be verified against the unit to ensure proper fit.

- (▲) : Indicates whirlpool jets positioning
- (△) : Indicates suction positioning
- (●) : Indicates airjets positioning
- (☐) : Indicates chromotherapy light positioning