

MAAX SUBMITTAL SPECIFICATIONS

CSS40

MODEL NUMBER 140009

DIMENSIONS: 42" x 42" x 78" Fiberglass



Project :
Contractor :
MAAX Representative : Tel :
Date :

Vivez l'expérience
MAAX[®]
Enjoy the experience

STANDARD FEATURES

- 1-piece neo-angle corner shower without roof cap
- Integrated shelf
- Center drain

OPTIONS

- PVC quick caulking shower drain with Chrome or Brushed Nickel grid
- ABS shower drain with Chrome stainless steel grid
- ABS shower drain with ABS grid

UNIQUE FEATURES

- None

SYSTEMS

- None

DOOR SELECTION

Combine with MAAX's complete shower door offering visit www.maax.com

CERTIFICATIONS

Maax products adhere to one or more of the following certifications:



www.maax.com

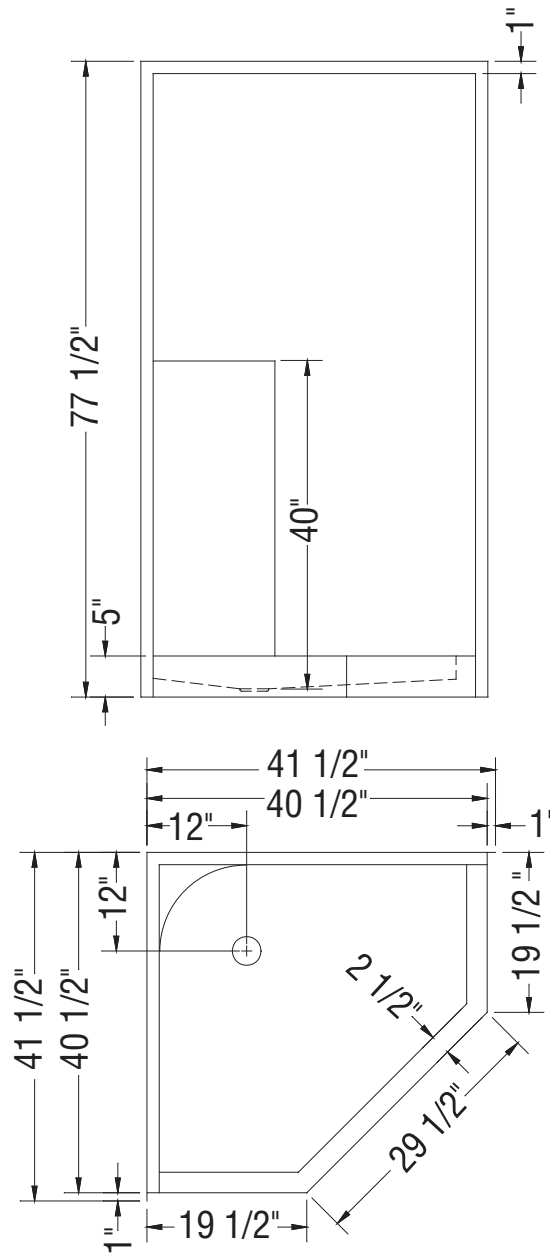
2017-11-09

MAAX SUBMITTAL SPECIFICATIONS

CSS40

MODEL NUMBER 140009

TECHNICAL DRAWINGS



All dimensions are approximate. Structure measurements must be verified against the unit to ensure proper fit.