

## MAAX SUBMITTAL SPECIFICATIONS

# SPL 3636 AFR

**MODEL NUMBER 145027**

DIMENSIONS: 36" x 36" x 7" Fiberglass



Project : .....  
Contractor : .....  
MAAX Representative : ..... Tel : .....  
Date : .....

**www.maax.com**

Vivez l'expérience  
**MAAX®**  
Enjoy the experience

### STANDARD FEATURES

- 3 3/8" Low threshold base
- Above-the-Floor Rough (AFR)
- Integrated tiling flange
- Textured floor
- Center drain

### OPTIONS

- None

### UNIQUE FEATURES

- Tiling Flange
- Above-the-Floor Rough (AFR)

### SYSTEMS

- None

### DOOR SELECTION

Combine with MAAX's complete shower door offering visit [www.maax.com](http://www.maax.com)

### CERTIFICATIONS

Maax products adhere to one or more of the following certifications:



2017-11-09

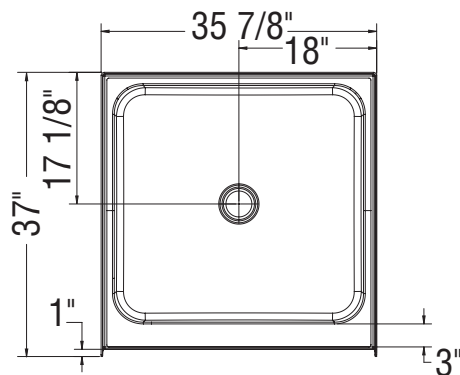
## MAAX SUBMITTAL SPECIFICATIONS

# SPL 3636 AFR

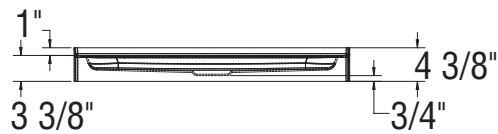
MODEL NUMBER 145027

## TECHNICAL DRAWINGS

---



NOT ABOVE-THE-FLOOR



ABOVE-THE-FLOOR

