

MAAX SUBMITTAL SPECIFICATIONS

KDS 3460

MODEL NUMBER 145042

DIMENSIONS: 60" x 34" x 80" Fiberglass



Project :
Contractor :
MAAX Representative : Tel :
Date :

www.maax.com

Vivez l'expérience
MAAX®
Enjoy the experience

STANDARD FEATURES

- Product available with or without Above-the-Floor Rough
- 4-piece shower with low threshold base
- Large top corner shelves, wide soap dish and standard acrylic handle
- Right seat, left seat or no seat configuration
- Unique feature: pin system for easy front installation
- All grab bars can support up to 300 lbs

OPTIONS

- 18" Modern straight grab bar
- 24" Modern straight grab bar
- Wall reinforcement (one wall)
- One 12-in. handle with metallic finish

UNIQUE FEATURES

- Above-the-Floor Rough (AFR)
- PIN system

SYSTEMS

- None

DOOR SELECTION

Combine with MAAX's complete shower door offering visit www.maax.com

CERTIFICATIONS

Maax products adhere to one or more of the following certifications:



2017-11-09

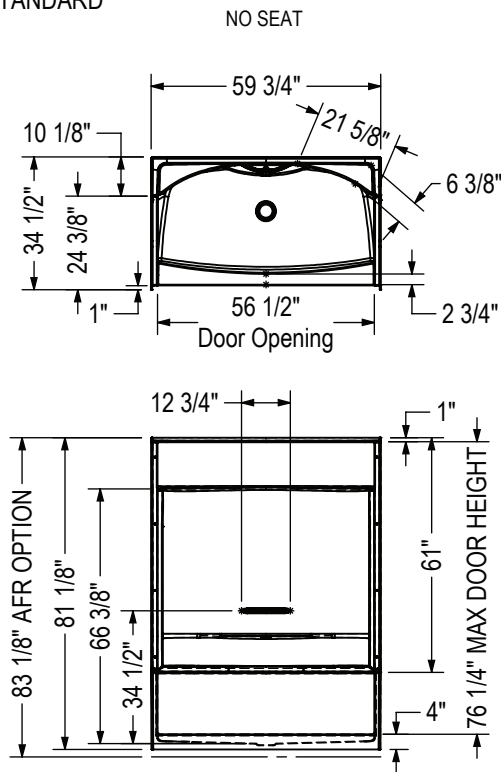
MAAX SUBMITTAL SPECIFICATIONS

KDS 3460

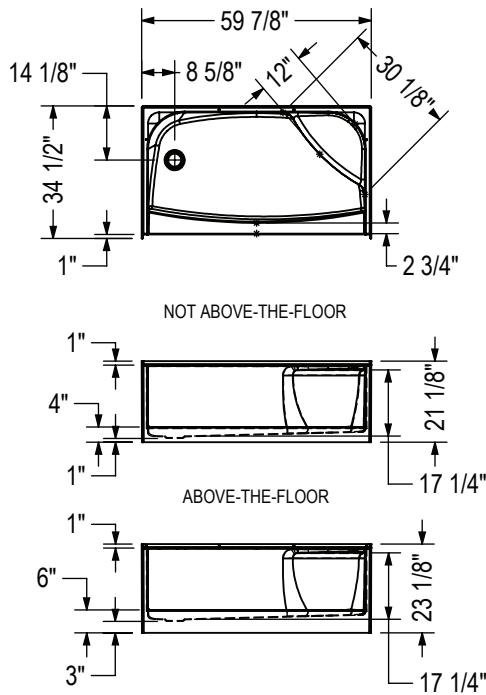
MODEL NUMBER 145042

TECHNICAL DRAWINGS

STANDARD

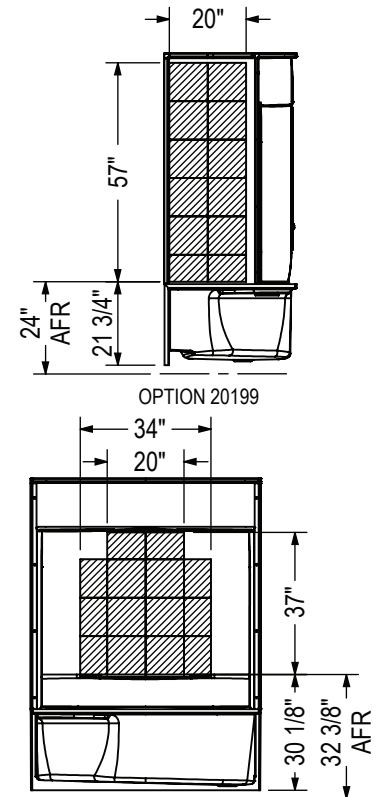


RIGHT SEAT SHOWN
 LEFT SEAT SYMMETRICAL



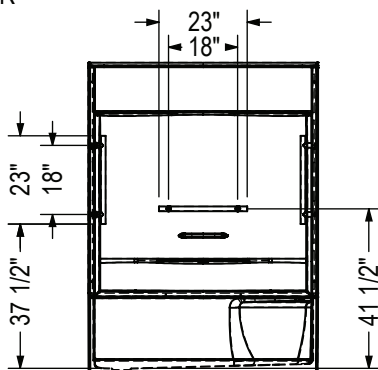
REINFORCEMENT BACKING

OPTION 20198 Shown
 OPTION 20197 Symmetrical

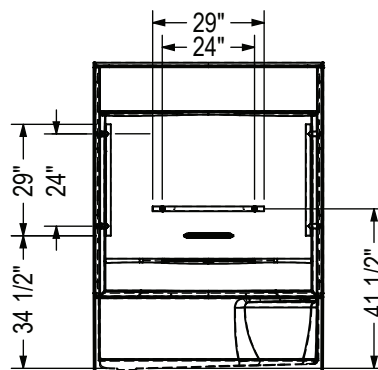


GRAB BAR

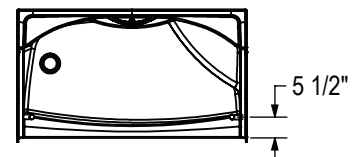
OPTION 20203



OPTION 20204



OPTION
 20203-20204



All dimensions are approximate. Structure measurements must be verified against the unit to ensure proper fit.