

## MAAX SUBMITTAL SPECIFICATIONS

# KDS 3460 AFR

**MODEL NUMBER 145043**

DIMENSIONS: 60" x 34" x 82" Fiberglass



Project : .....  
Contractor : .....  
MAAX Representative : ..... Tel : .....  
Date : .....

**www.maax.com**

Vivez l'expérience  
**MAAX®**  
Enjoy the experience

### STANDARD FEATURES

- Product also available without Above-the-Floor Rough (AFR) feature (SEE KDS 3460)
- 4-piece shower with Above-the-Floor Rough (AFR) feature and low threshold base
- Large top corner shelves, wide soap dish and standard acrylic handle
- Right seat, left seat or no seat configuration
- Unique feature: pin system for easy front installation
- All grab bars can support up to 300 lbs

### OPTIONS

- 18" Modern straight grab bar
- 24" Modern straight grab bar
- Wall reinforcement (one wall)
- One 12-in. handle with metallic finish

### UNIQUE FEATURES

- Above-the-Floor Rough (AFR)

### SYSTEMS

- None

### DOOR SELECTION

Combine with MAAX's complete shower door offering visit [www.maax.com](http://www.maax.com)

### CERTIFICATIONS

Maax products adhere to one or more of the following certifications:



2017-11-09

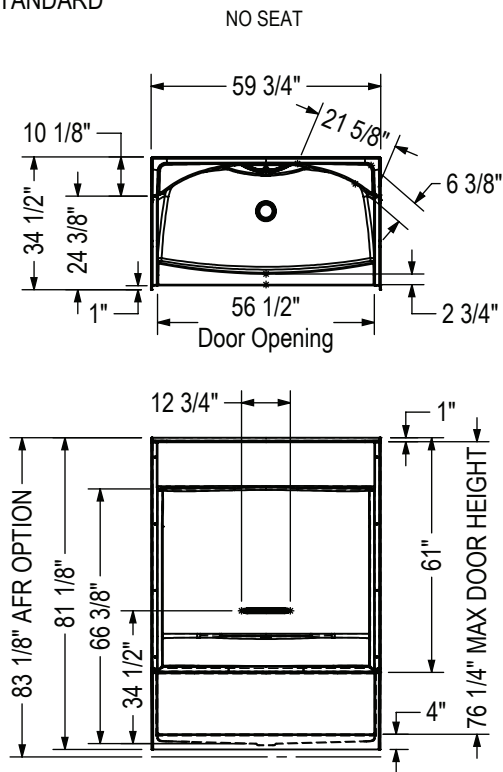
## MAAX SUBMITTAL SPECIFICATIONS

# KDS 3460 AFR

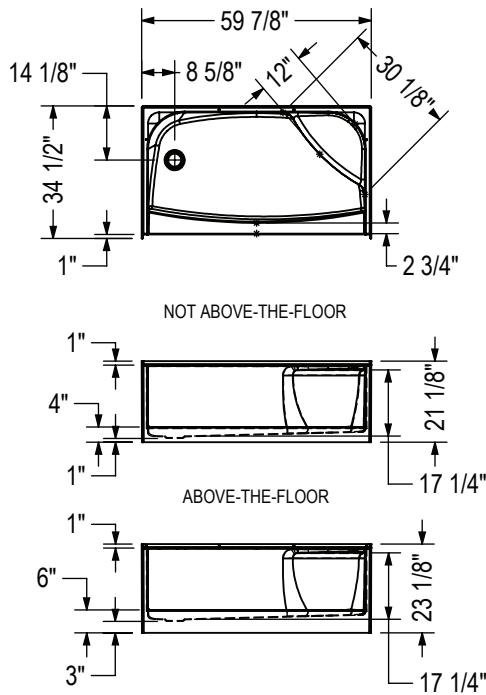
MODEL NUMBER 145043

## TECHNICAL DRAWINGS

### STANDARD

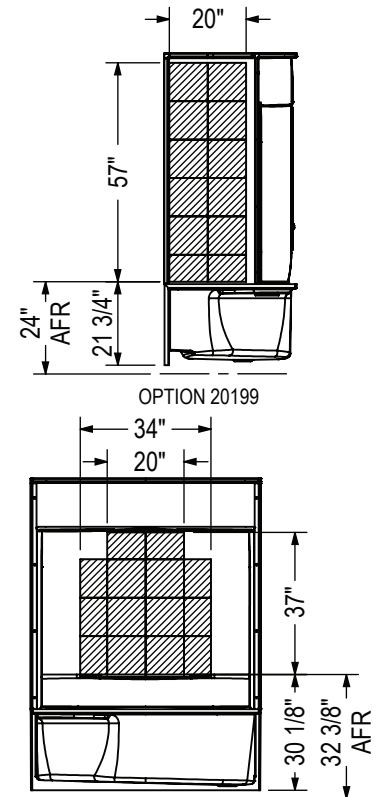


RIGHT SEAT SHOWN  
 LEFT SEAT SYMMETRICAL



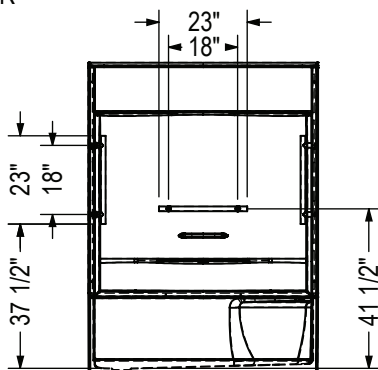
### REINFORCEMENT BACKING

OPTION 20198 Shown  
 OPTION 20197 Symmetrical

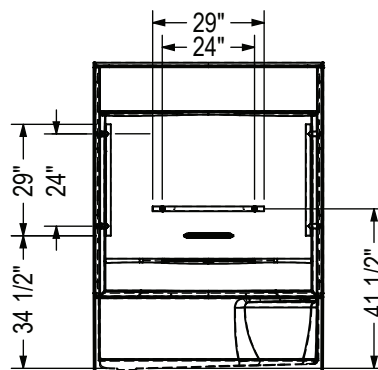


### GRAB BAR

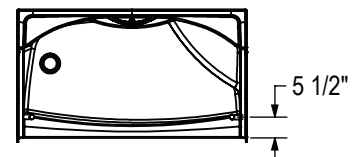
OPTION 20203



OPTION 20204



OPTION  
 20203-20204



All dimensions are approximate. Structure measurements must be verified against the unit to ensure proper fit.