

OPTS-6032G-2P tub shower

Model number:

141302

Dimensions: 57" x 30" x 74"

Installation: Alcove

Material: Fiberglass



Standard Features:

- Two-piece tub shower reinforced for customized placement of grab bars and seat
- Optional grab bars, seat & soap dish
- Curtain rod, shower curtain & faucet kit also available
- Right/Left-end drain
- Textured bottom
- Above-the-Floor Rough

Product characteristics:

- Multi-Piece Unit
- Aging in place
- Grab Bars & Seats Available

Warranty:

5 Years

Standard colors:



White (002)



Bone (004)



Biscuit (007)

Certifications

MAAX products adhere to one or more of the following certifications:



Recommended products (Visit our website for a complete list of our recommended doors)

Description	No
OPT20051	Rectangular phenolic seat
OPT20059	Recessed soap dish
OPT20203	18" Modern straight grab bar
OPT20204	24" Modern straight grab bar
OPT20213	36 in. Modern horizontal straight grab bar on back wall

Options (Visit our website for a complete list of our options)

No	Description
<input type="checkbox"/> OPT 20051	Rectangular phenolic seat
<input type="checkbox"/> OPT 20059	Recessed soap dish
<input type="checkbox"/> OPT 20203	18" Modern straight grab bar
<input type="checkbox"/> OPT 20204	24" Modern straight grab bar
<input type="checkbox"/> OPT 20213	36 in. Modern horizontal straight grab bar on back wall

OPTS-6032G-2P tub shower

Model number:

141302

Dimensions: 57" x 30" x 74"

Installation: Alcove

Material: Fiberglass

Dimensions:

56 1/2 x 30 3/8 x 74 in.
(1435 x 772 x 1880 mm)

Weight:

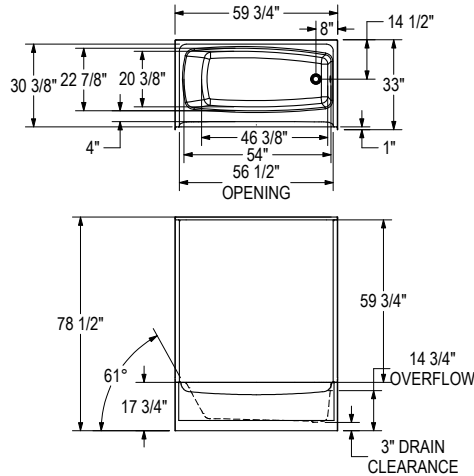
186 lbs -

Drain location:

Left

Right

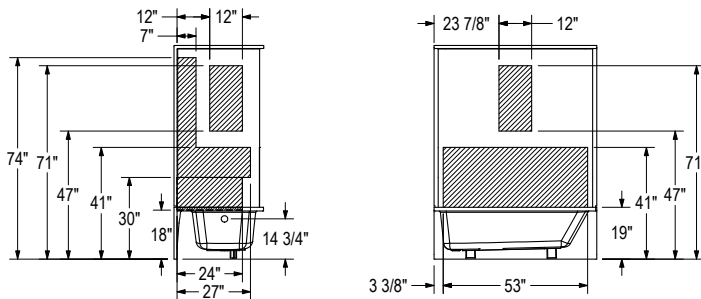
STANDARD MODEL
RIGHT DRAIN SHOWN
LEFT DRAIN SYMMETRICAL



REINFORCEMENT BACKING
RIGHT DRAIN SHOWN
LEFT DRAIN SYMMETRICAL

RIGHT WALL SHOWN
LEFT WALL SYMMETRICAL

BACK WALL



All dimensions are approximate. Structure measurements must be verified against the unit to ensure proper fit.

Project:

Contractor:

Representative:

Date:

Tel:

Notes: