

# ALLIA SHR-6034 (3-pieces)

**Model number:**

107002S

**Dimensions:** 60" x 35" x 88"

**Installation:** Alcove

**Material:** Acrylic



## Standard Features:

3-pieces shower with integrated roofcap and 3 1/4 low threshold  
Wide 3-level corner shelves  
Standard 12 in. colour-coordinated grab bar  
Right, Left, two seats or no seat  
Right-hand, left-hand or center drain  
Textured floor  
Optional grab bars and fold-down seat available (grab bar installed on back wall replaces standard grab bar)  
All grab bars and seats can support up to 300 lbs  
Available in White only

## Product characteristics:

- Multi-Piece Unit
- Easy Installation
- Grab Bars & Seats Available

## Warranty:

25 Years

## Standard colors:



White (001)

## Certifications

MAAX products adhere to one or more of the following certifications:



## Recommended doors (Visit our website for a complete list of our recommended doors)

No	Description
136456	Kleara 2-panel Pivot Shower Door 51 1/2-54 1/2 x 69 in. 6 mm
138314	Triple Plus Sliding Shower Door 52 1/2-54 1/2 x 66 in.

## Options (Visit our website for a complete list of our options)

No	Description
<input type="checkbox"/> OPT 10189	All walls reinforced
<input type="checkbox"/> OPT 20056	60 in. curtain rod
<input type="checkbox"/> OPT 20203-B	18" Modern straight horizontal grab bar on back wall
<input type="checkbox"/> OPT 20203-L	18" Modern straight vertical grab bar on left wall
<input type="checkbox"/> OPT 20203-R	18" Modern straight vertical grab bar on right wall

# ALLIA SHR-6034 (3-pieces)

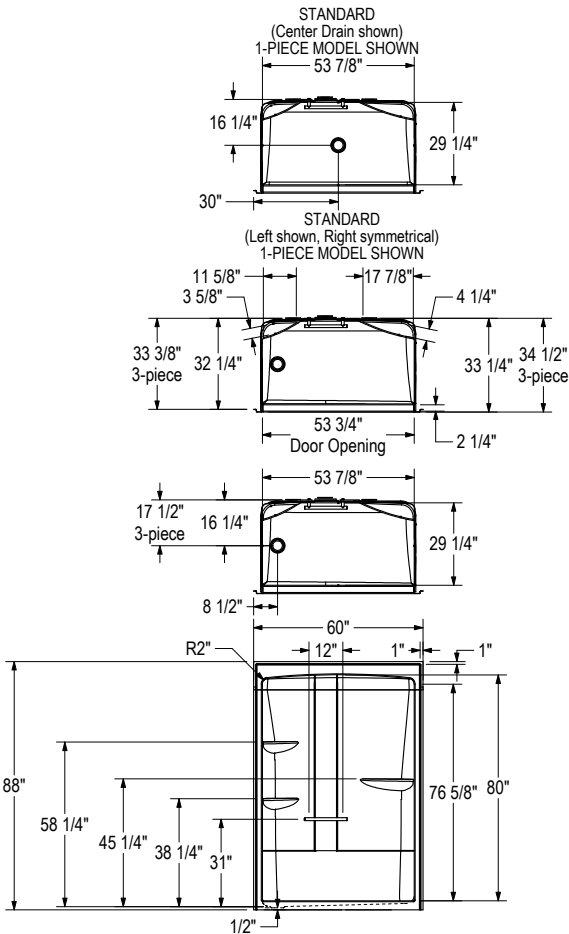
Model number:

107002S

Dimensions: 60'' x 35'' x 88''

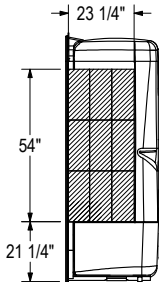
Installation: Alcove

Material: Acrylic

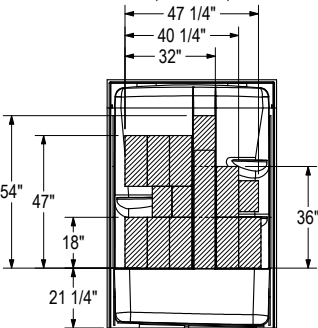


All dimensions are approximate. Structure measurements must be verified against the unit to ensure proper fit.

OPTIONNAL REINFORCEMENT  
(Left shown, Right symmetrical)



OPTIONNAL REINFORCEMENT  
(Back Wall)



## Dimensions:

60 x 34 1/2 x 88 in.  
(1524 x 876 x 2235 mm)

## Weight:

169 lbs - 77 kg

## Shape:

Rectangular

## Pieces:

3

## Drain location:

Two seats, center drain

Left seat, center drain

Left seat, right drain

No seat, center drain

No seat, left drain

No seat, right drain

Project:

Contractor:

Representative:

Date:

Tel:

Notes: