

# PRODUCT INFORMATION PACKET

**marathon®**  
Motors

Model No: 5KH32HN5620T

Catalog No: HG711

Fan and Blower Motor, 0.33 HP, 1 Ph, 60 Hz, 115 V, 1800 RPM, 48Y Frame, OPEN



Regal and Marathon are trademarks of Regal Rexnord Corporation or one of its affiliated companies.

©2023 Regal Rexnord Corporation, All Rights Reserved. MC017097E

**RegalRexnord**

### Nameplate Specifications

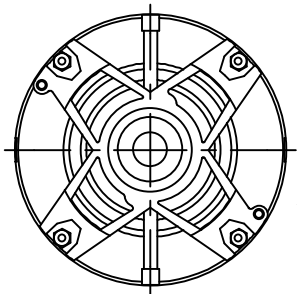
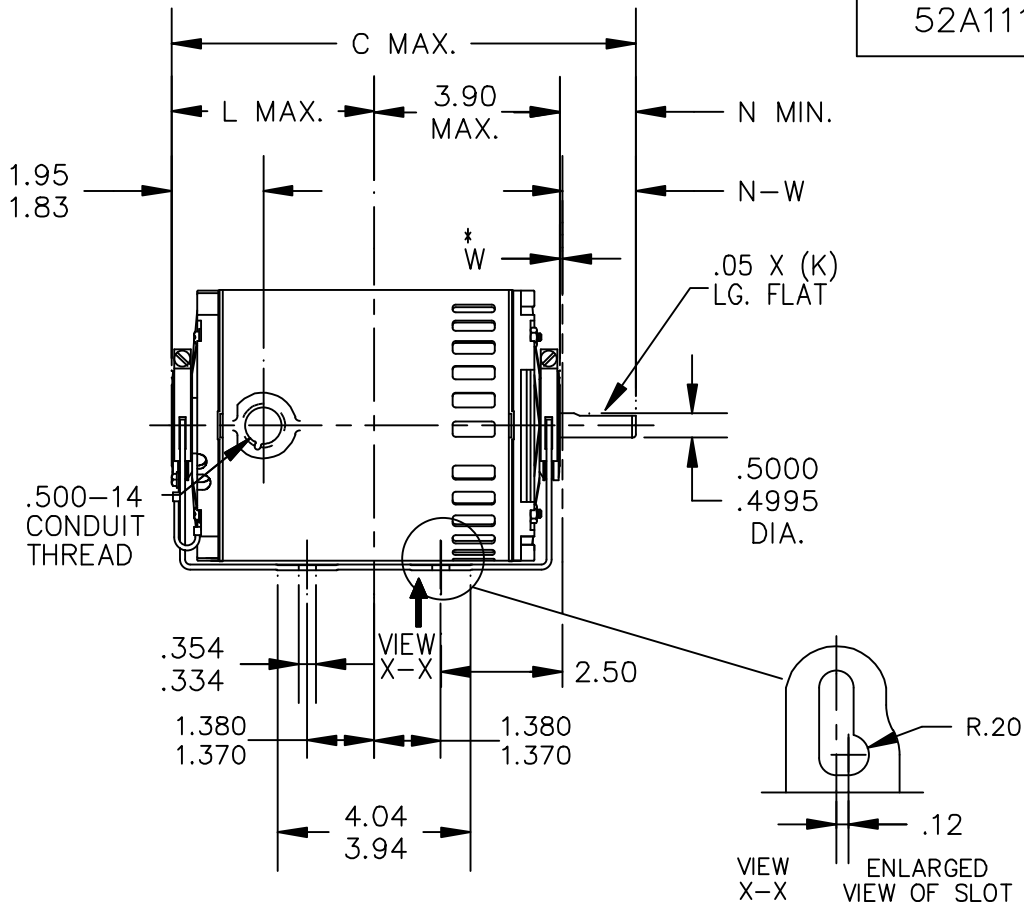
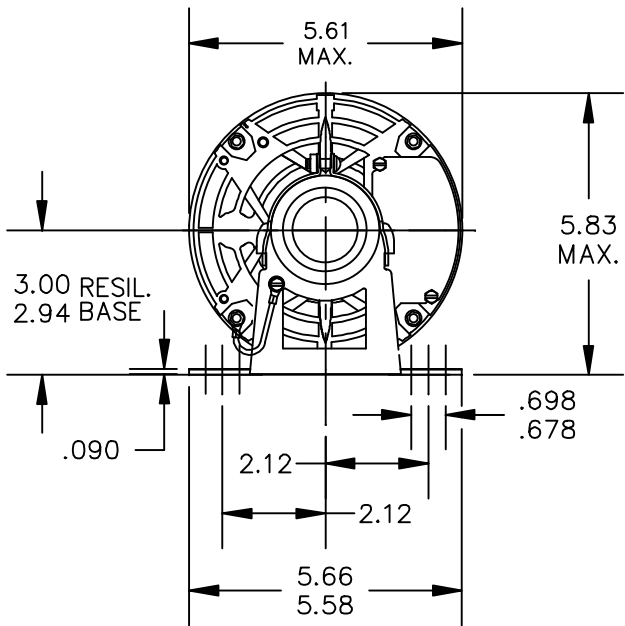
|                            |               |                        |            |
|----------------------------|---------------|------------------------|------------|
| Output HP                  | 0.33 Hp       | Output KW              | 0.25 kW    |
| Frequency                  | 60 Hz         | Voltage                | 115 V      |
| Current                    | 6.6 A         | Speed                  | 1725 rpm   |
| Service Factor             | 1.35          | Phase                  | 1          |
| Efficiency                 | 54.5 %        | Power Factor           | 0          |
| Duty                       | Continuous    | Insulation Class       | B          |
| KVA Code                   | N             | Frame                  | 48Y        |
| Enclosure                  | Open Enclosed | Thermal Protection     | Automatic  |
| Ambient Temperature        | 40 °C         | Drive End Bearing Size | 6203       |
| Opp Drive End Bearing Size | 6203          | UL                     | Recognized |
| CSA                        | Yes           | CE                     | N          |
| Number of Speeds           | 1             |                        |            |

### Technical Specifications

|                   |                |                       |                            |
|-------------------|----------------|-----------------------|----------------------------|
| Electrical Type   | Split Phase    | Starting Method       | SM                         |
| Poles             | 4              | Rotation              | Clockwise/Counterclockwise |
| Mounting          | Resilient Base | Motor Orientation     | ANY                        |
| Drive End Bearing | BALL           | Opp Drive End Bearing | BALL                       |
| Frame Material    | Rolled Steel   | Overall Length        | 8.94 in                    |
| Frame Length      | 5.16 in        | Shaft Diameter        | 0.500 in                   |
| Shaft Extension   | 1.5 in         | Thru-bolts Extension  | 0 in                       |
| Outline Drawing   | 52A111771P2    | Connection Drawing    | 52A105379AA                |

This is an uncontrolled document once printed or downloaded and is subject to change without notice. Date Created:03/15/2023


52A111771



VIEW  
SHOWING P.E.  
VENTILATION  
OPENINGS

W\* IS A CLEARANCE DUE  
TO VARIATION IN PARTS  
AND ASSEMBLY.

|   |      |             |            |     |      |      |      |      |           |
|---|------|-------------|------------|-----|------|------|------|------|-----------|
| 4 | K    | KH          | 32         | 48Y | 8.94 | 1.25 | 3.59 | 1.50 | 1.63/1.41 |
| 3 | K    | KH          | 33         | 48Y | 9.19 | 1.16 | 3.84 | 1.50 | 1.63/1.41 |
| 2 | K    | KH          | 32         | 48Y | 8.94 | 1.16 | 3.59 | 1.50 | 1.63/1.41 |
| 1 | K    | KH          | 35         | 48Y | 9.57 | 1.16 | 4.22 | 1.50 | 1.63/1.41 |
| P | TYPE | RBC<br>SIZE | NEMA<br>FR | C   | K    | L    | N    | N—W  |           |

|     |  |             |     | TOLERANCES<br>UNLESS SPECIFIED |         |  <b>REGAL-BELOIT CORPORATION</b> |  |        |                       | DRAWN DS 02/26/07 |        |
|-----|--|-------------|-----|--------------------------------|---------|---|--|--------|-----------------------|-------------------|--------|
|     |  |             |     | DEC.                           | INCHES  |   |  |        |                       | CHK               |        |
| 3   | CHG GD LD 4:30 TO 7:30 PER IS11-0510 & | UD 9/24/12  | PKG | .X                             | ±0.1    | <b>TITLE</b><br><b>OUTLINE</b><br>DRIP PROOF RESIL. BASE  |  |        |                       | APPD DS 02/26/07  |        |
|     | REDRAWN IN DRAFT SIGHT                 |             |     | .XX                            | ±0.02   |   |  |        |                       | SCALE 1=1         |        |
| 2   | ADDED P4 PER IS10 - 2231               | PN 9/16/10  |     | .XXX                           | ±0.005  |   |  |        |                       | REF               |        |
| 1   | GROUND LEAD ADDED PER ISO7-0531        | BM 10/26/07 |     | .XXXX                          | ±0.0005 | MAT'L.  |  |        |                       | FMF               |        |
| NO. | REVISION                               | BY & DATE   | CHK | ANG                            | ±1.0    | FINISH  |  |        |                       | PREV              |        |
|     |  |             |     | RFP                            |         | CAD FILE 52A111771  |  | SIZE A | DRAWING NO. 52A111771 |                   | REV. 3 |
|     |  |             |     | DIS                            |         |   |  |        |                       |                   |        |

THIS DRAWING IN DESIGN AND DETAIL IS OUR PROPERTY AND MUST NOT BE USED EXCEPT  
IN CONNECTION WITH OUR WORK. ALL RIGHTS OF DESIGN AND INVENTION ARE RESERVED  
THIS IS AN ELECTRONICALLY GENERATED DOCUMENT - DO NOT SCALE THIS PRINT

