

PRODUCT INFORMATION PACKET



Model No: 5KH35MNA519T

Catalog No: 5KH35MNA519T

Fan and Blower Motor, 0.50 HP, 1 Ph, 60 Hz, 115 V, 1800 RPM, 48Y Frame, OPEN



Regal and Leeson are trademarks of Regal Rexnord Corporation or one of its affiliated companies.

©2024 Regal Rexnord Corporation, All Rights Reserved. MC017097E





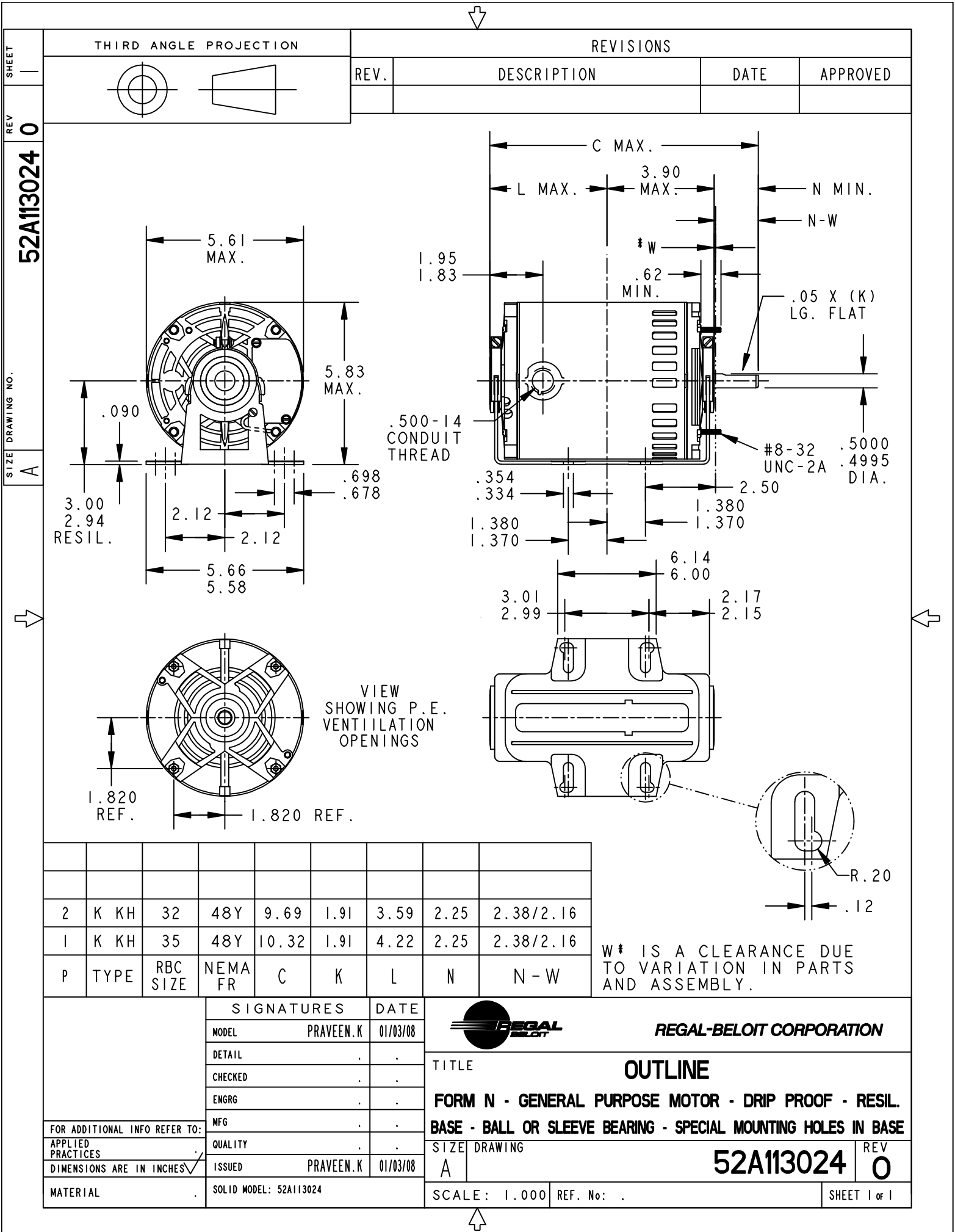
Nameplate Specifications

| | | | |
|----------------------------|------------|------------------------|---------------|
| Phase | 1 | Output HP | 0.50 Hp |
| Output KW | 0.37 kW | Voltage | 115 V |
| Speed | 1725 rpm | Service Factor | 1.25 |
| Frame | 48Y | Enclosure | Open Enclosed |
| Thermal Protection | Automatic | Efficiency | 65.4 % |
| Ambient Temperature | 40 °C | Frequency | 60 Hz |
| Current | 7.9 A | Power Factor | 0 |
| Duty | Continuous | Insulation Class | B |
| KVA Code | N | Drive End Bearing Size | 6203 |
| Opp Drive End Bearing Size | 6203 | UL | Recognized |
| CSA | Yes | CE | N |
| Number of Speeds | 1 | | |

Technical Specifications

| | | | |
|-------------------|----------------|-----------------------|----------------------------|
| Electrical Type | Split Phase | Starting Method | SM |
| Poles | 4 | Rotation | Clockwise/Counterclockwise |
| Mounting | Resilient Base | Motor Orientation | ANY |
| Drive End Bearing | BALL | Opp Drive End Bearing | Ball |
| Frame Material | Rolled Steel | Overall Length | 10.32 in |
| Frame Length | 5.79 in | Shaft Diameter | 0.500 in |
| Shaft Extension | 2.25 in | | |
| Outline Drawing | 52A113024P1 | Connection Drawing | 52A105379AA |

This is an uncontrolled document once printed or downloaded and is subject to change without notice. Date Created:09/18/2024



52A105379AA 6

REV

SHEET

SIZE DRAWING NO. A

THIRD ANGLE PROJECTION

| REV. | DESCRIPTION | DATE | APPROVED |
|------|----------------|----------|----------|
| 6 | UPDATED FORMAT | 12/01/05 | MAM |

EITHER ROTATION-SINGLE VOLTAGE-TYPE KC OR KH-WITH THERMAL PROTECTOR

ALTERNATE THERMOSTAT CONNECTION

BACKUP PROTECTOR FOR UL507 ONLY

PI BROWN OR PURPLE

LINE

THERMAL PROTECTOR

2

1

3

P2 OR BROWN

15

5

5

T1 OR BLUE

5

T8 OR RED

5

START CAPACITOR FOR KC MOTORS ONLY LEAD T5 OR BLACK CONNECTED DIRECTLY TO SWITCH FOR KH MOTORS

MAIN

START

T5 OR BLACK

J9 OR BLACK

A

SWITCH

LINE

T4 OR YELLOW

E

STANDARD ROTATION

BELOW BOARD

P2

P1

5

1

4

T1

T8

J9

A

T4

2

LINE

LEAD CLAMP (WHEN SPEC.)

SWITCH BOARD CONNECTION

ALTERNATE THERMOSTAT CONNECTION

BACKUP PROTECTOR FOR UL507 ONLY

PI BROWN OR PURPLE

LINE

THERMAL PROTECTOR

2

1

3

P2 OR BROWN

15

5

5

T1 OR BLUE

5

T8 OR RED

5

START CAPACITOR FOR KC MOTORS ONLY LEAD T5 OR BLACK CONNECTED DIRECTLY TO SWITCH FOR KH MOTORS

MAIN

START

T5 OR BLACK

J9 OR BLACK

A

SWITCH

LINE

T4 OR YELLOW

E

REVERSED ROTATION

BELOW BOARD

P2

P1

5

1

4

T1

T8

J9

A

T4

2

LINE

LEAD CLAMP (WHEN SPEC.)

SWITCH BOARD CONNECTION

NOTE #1 - TO REVERSE ROTATION INTERCHANGE RED (T8) AND BLACK (J9-KC OR T5-KH) LEADS.

NOTE #2 - WHEN MORE THAN ONE CAPACITOR IS USED CONNECT IN PARALLEL.

SWITCH (C) - 115D958AB

REF. DIAG. - 121A851

CONN. LABEL - 52X332048

| SIGNATURES | DATE |
|--------------------------|----------|
| MODEL M.D. PAPE | 06/29/87 |
| DETAIL | . |
| CHECKED | . |
| ENGRG | . |
| MFG | . |
| QUALITY | . |
| ISSUED M.D.P. | 03/08/00 |
| SOLID MODEL: 52A105379AA | |

REGAL-BELOIT CORPORATION

TITLE

CONNECTION DIAGRAM

FMF - 30 FR SWITCH REDESIGN

SIZE A

DRAWING

52A105379AA

REV 6

SCALE: 1.000

REF. No:

SHEET 1 of 1