

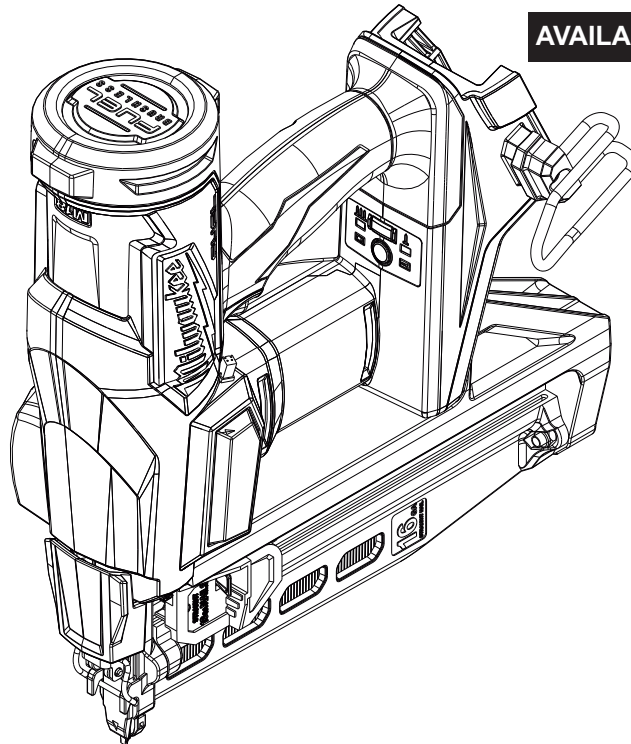


SERVICE PARTS LIST

BULLETIN NO.
54-00-3020

SPECIFY CATALOG NO. AND SERIAL NO. WHEN ORDERING PARTS				REVISED BULLETIN	DATE
M18 FUEL™ 16 GA. Straight Finishing Nailer					June 2023
CATALOG NUMBER	3020-20	SERIAL NUMBER	N69A	WIRING INSTRUCTION	

AVAILABLE SERVICE PARTS PAGE 2



Due to the combination of the compressed air system and electronics in this tool, service can only be performed at Milwaukee Authorized Repair Centers:

MILWAUKEE TOOL Central Repair

1401 Sycamore Avenue • Greenwood, MS 38930-7277

Please send your tool directly to this location for service.

Or

2198 Southtech Drive • Greenwood, IN 46143-6725

Please send your tool directly to this location for service.

Or

Via e-Service at: www.milwaukeetool.com/e-service
questions, please call 1.800.SAWDUST (1.800.729.3878)

Or

Visit www.milwaukeetool.com to find your closest
Milwaukee authorized Repair Center

Or

Return it to a MILWAUKEE *factory* Service Center location, freight prepaid and insured.
A copy of the proof of purchase should be included with the return product.

If you have questions please contact Milwaukee Product Service at:

Product Technical Support via phone at: 262.783.8642

Or

Via email at: METProductSupport@milwaukeetool.com

Disassembly is not recommended and could void the warranty.

EXAMPLE:
Component Parts (Small #) Are Included
When Ordering The Assembly (Large #).

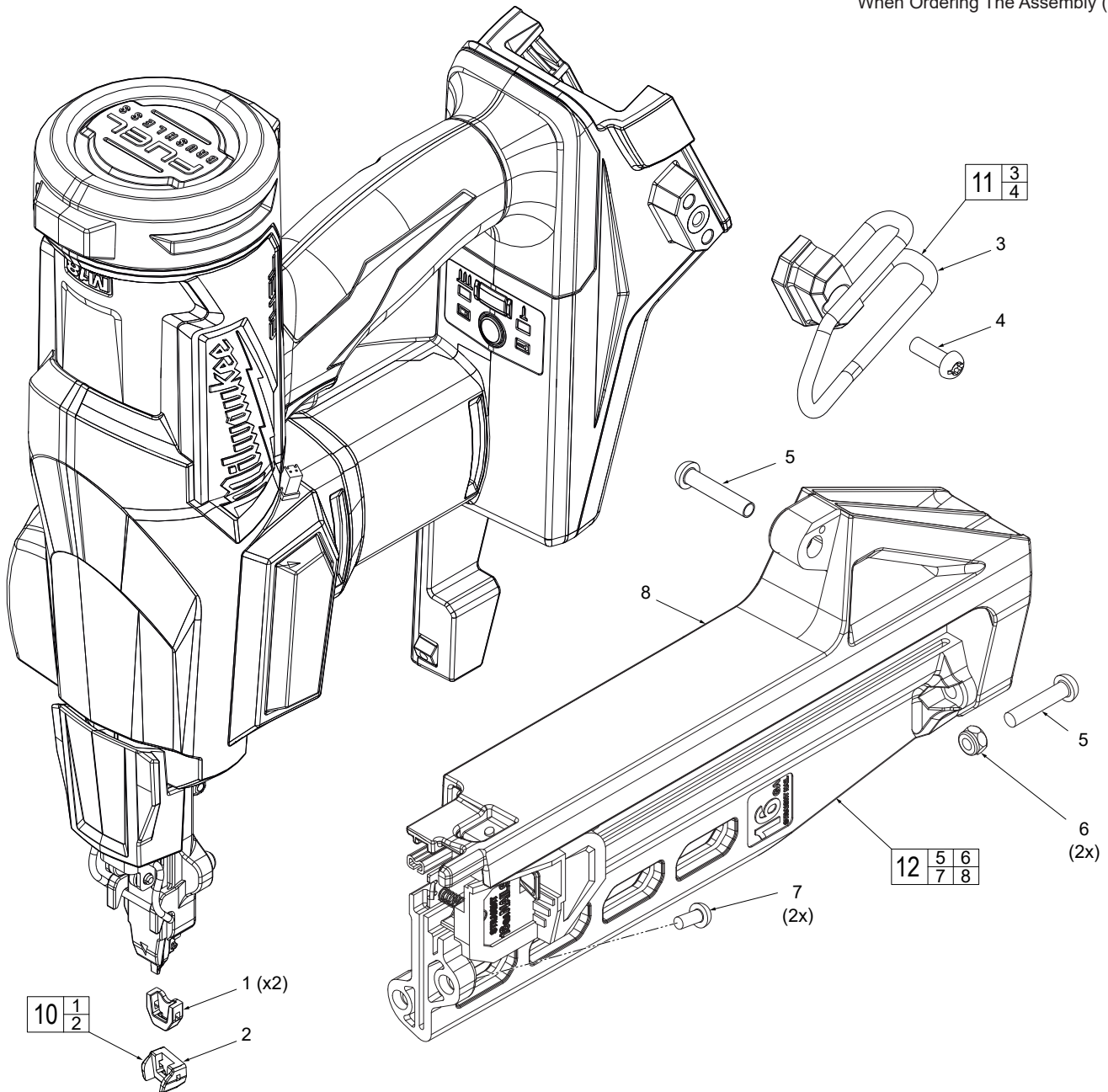


FIG.	PART NO.	DESCRIPTION OF PART	NO. REQ.
1	14-46-0341	WCB Tip	2
2	-----	Wing WCB Tip	1
3	-----	Belt Hook	1
4	-----	M5 PH T25 Screw	1
5	-----	M5 x 24mm Pan Hd. T-25 Machine Screw	2
6	05-55-0022	Nylon Insert Nut	2
7	05-81-1030	M4 Hex Screw	2
8	-----	Magazine	1
10	42-38-0126	No Mar Pad Kit	1
11	42-70-0021	Belt Hook Kit	1
12	43-40-0116	Magazine Assembly	1