



MODA™ KITCHEN OUTLET BOX TECHNICAL SPECIFICATION

Job Name _____	Item # _____
Location _____	
Engineer _____	Contractor _____
PO # _____	Tag _____
Representative _____	

SPECIFICATIONS

Oatey MODA™ kitchen outlet boxes shall be used in residential or commercial applications requiring a supply valve recessed in the wall. The MODA™ lavatory assembly contains three 3/8" OD compression valves pre-installed in a two PVC boxes, connected by inter-locking wing flanges that can be easily disassembled and re-assembled. The inter-locking wing flanges shall allow installation on a single stud, between two studs or on separate walls, without the need for additional components. No additional components shall be required for a between stud installation. Valves shall be a two-piece design, permitting field replacement, and shall be secured with a stainless steel retention clip. Valves are available with or without water hammer arrestors and shall be installed upright or inverted. The assembly shall include a include an emergency drain port for protection from tubing leaks.

APPROVALS & LISTINGS

Valves	ASME A112.18.1 / CSA B125.1 NSF / ANSI 61 & 372
Water Hammer Arrestors	ASSE 1010
Boxes	IAPMO-Listed

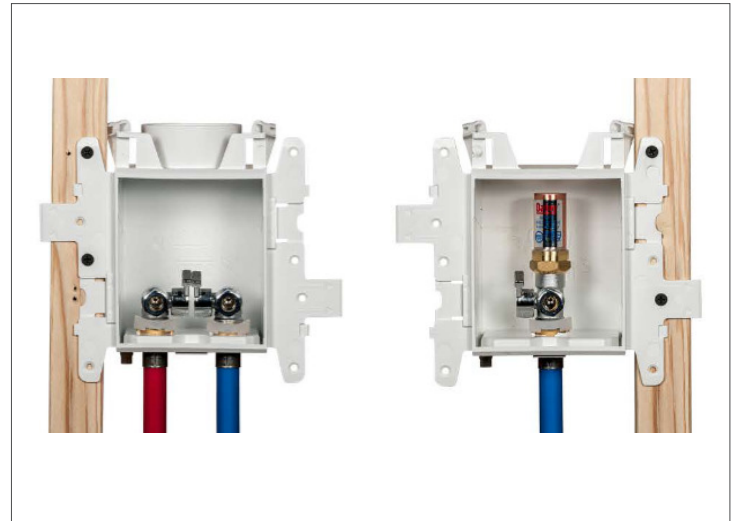


FEATURES & MATERIALS

Outlet Box & Brackets	PVC
Valve Body	Forged Brass C46500 No Lead (Chrome Plated)
Valve Retention Clip	Stainless Steel
Valve O-Rings Approved EPDM (2)	NSF/FDA Approved EPDM (2)
Temperature Rating (Valve)	250° F / 121° C
Max Testing Pressure	100 psi (Air) / 250 psi (Water)

DIMENSIONS

[A]:	Assembled Width	14.13"	[E]:	Bracket Length	8.00"
[B]:	Box Depth	3.38"	[F]:	Faceplate Width	6.00"
[C]:	Box Height	4.85"	[G]:	Faceplate Height	6.45"
[D]:	Bracket Width	4.00"	[H]:	Faceplate Depth	1.25"



Accessory Components Included:



Side Brackets (2)



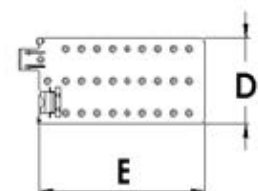
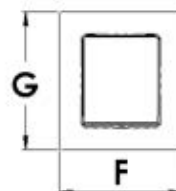
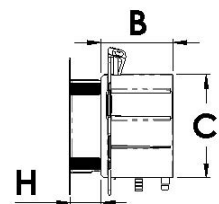
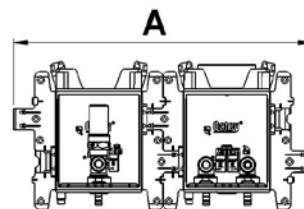
Faceplates (2)



Sticker Cover (2)
(For Debris Protection)



Center Support
(For Added Rigidity)



Access BIM/Revit content through www.oatey.com



**MODA™ KITCHEN
OUTLET BOX
TECHNICAL SPECIFICATION**

PRODUCT SELECTOR

LAVATORY NO HAMMER & DISHWASHER HAMMER				LAVATORY HAMMER & DISHWASHER HAMMER			
✓	Product Number	Description	Ctn. Qty.	✓	Product Number	Description	Ctn. Qty.
	37819	MODA Kitchen, Copper (Male), Standard	12		37827	MODA Kitchen, Copper (Male), Standard	12
	37821	MODA Kitchen, F1807 PEX (Brass), Standard	12		37829	MODA Kitchen, F1807 PEX (Brass), Standard	12
	37822	MODA Kitchen, F2159 PEX (PPSU), Standard	12		37830	MODA Kitchen, F2159 PEX (PPSU), Standard	12
	37823	MODA Kitchen, F1960 PEX (Brass), Standard	12		37831	MODA Kitchen, F1960 PEX (Brass), Standard	12
	37824	MODA Kitchen, F1960 PEX (PPSU), Standard	12		37832	MODA Kitchen, F1960 PEX (PPSU), Standard	12
	37820	MODA Kitchen, CPVC (Male), Standard	12		37828	MODA Kitchen, CPVC (Male), Standard	12
	37826	MODA Kitchen, Push Connect, Standard	12		37834	MODA Kitchen, Push Connect, Standard	12