

ALUMINIUM FOUR BARREL CONNECTORS – FOUR HOLE MOUNT

- Made of high strength aluminium - 6061-T6
- Used for copper and or aluminium conductors.
- Electro - Tin plated for low contact resistance and protection against corrosion.
- East installation, no tools required.
- Connectors are re-usable.
- Rated 600 volts / 90°C

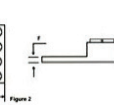
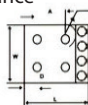


FIG. 1

FIG. 2

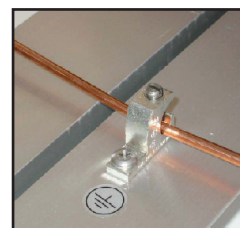


PART NO	CONDUCTOR RANGE		STUD HOLE	DIMENSION IN INCHES					
	MIN	MAX		L	W	F	D	A	FIG NO
LA4M4250	6 STR	250 KCMIL	1/2	4.12	3.69	0.31	0.62	1.75	1
LA4M4350	6 STR	350 KCMIL	1/2	4.12	3.94	0.31	0.62	1.75	1
LA4D4600	2 STR	600 MCM	1/2	5.58	5.00	0.44	0.62	1.75	2
LA4D4800	350 KCMIL	800 MCM	1/2	5.82	5.62	0.50	0.62	1.75	2

COPPER LAY IN LUGS

- Made from high strength copper alloy
- Acceptable for direct burial earth or concrete.
- Use with copper conductor only.
- Lay in feature
- cULus 467 listed.

Great For Solar Panel Grounding



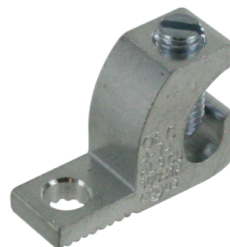
PART NO	CONDUCTOR RANGE		SPECIFICATIONS
	MIN	MAX	
CL50DB	14 AWG	4 AWG	With Stainless Steel Screw
CL50DBTN	14 AWG	4 AWG	Tin Plated With Stainless Steel Screw HD

ALUMINIUM LAY IN LUGS

- Made from high strength extruded aluminium alloy.
- Electra tin plated.
- Provides low contact resistance.
- Suitable for use with copper or aluminum conductors for grounding & continuous loop application
- cULus 467 Listed.



PART NO	CONDUCTOR RANGE	
	MAX	MIN
LI50S	14 AWG	4 AWG
LI112S	1/0 AWG	14 AWG
LI200S	3/0 AWG	6 AWG
LI252S	250 MCM	6 AWG



- Made from high strength extruded aluminium alloy.
- Tin Plated with Stainless Steel Screw
- Provides low contact resistance.
- Suitable for use with copper or aluminum conductors for grounding & continuous loop application
- cULus 467 Listed.



PART NO	CONDUCTOR RANGE	
	MAX	MIN
LI50SS	14 AWG	4 AWG

