



CorePro MainsFit (UL Type-B) T8

14.5T8/COR/48-5CCT/MF18/G/DIM 25/1

The CorePro MainsFit (UL Type B) lamps are designed to be the perfect retrofit solution to move from traditional fluorescent lamps to energy saving LEDs. This ballast bypass lamp has everything needed built into the lamp with proven energy savings, long life (up to 50k hours), surge suppression and industry leading safety features. All lamps in the CorePro MainsFit family are double-ended to help simplify the installation. In addition, all lamps meet the Philips standards for light quality so that end users will be in a comfortable environment regardless of the CorePro MainsFit lamp type.

Product data

General Information	
Cap-Base	G13 [Medium Bi-Pin Fluorescent]
Nominal lifetime	50,000 hour(s)
Switching Cycle	50,000
Lighting Technology	LED
Light Technical	
Color Code	3000K/3500K/4000K/5000K/6500K
Beam Angle (Nom)	240 degree(s)
Luminous Flux	1,800 lm
Luminous Efficacy (rated) (Nom)	124.00 lm/W
Color Designation	3000K/3500K/4000K/5000K/6500K
Correlated Color Temperature (Nom)	Selectable 3000 3500 4000 5000 6500 K
Color Consistency	6SCDM
Color rendering index (CRI)	80
LLMF At End Of Nominal Lifetime (Nom)	70 %

Operating and Electrical	
Line Frequency	50 to 60 Hz
Input Frequency	50 to 60 Hz
Power Consumption	14.5 W
Lamp Current (Max)	125 mA
Lamp Current (Min)	58 mA
Wattage Equivalent	32 W
Starting Time (Nom)	0.5 s
Warm-up time to 60% light	0.5 s
Power Factor (Fraction)	0.9
Voltage (Nom)	120-277 V
UL Type	UL Type B
Temperature	
Ambient temperature range	-20 to +45 °C
T-Case Maximum (Nom)	70 °C

CorePro MainsFit (UL Type-B) T8

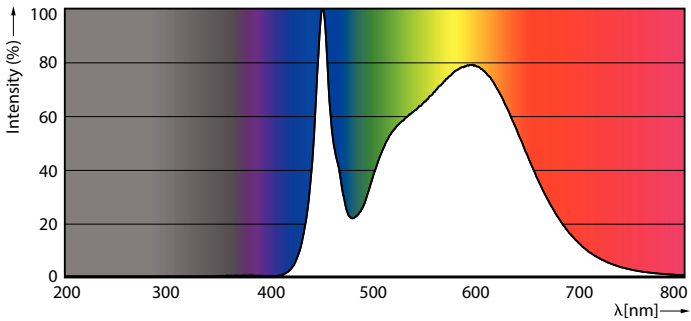
Controls and Dimming	
Dimmable	Only with specific dimmers
Mechanical and Housing	
Bulb Finish	Frosted
Bulb Material	Glass
Product Length	1,200 mm
Bulb Shape	T8
Approval and Application	
Energy Saving Product	Yes
Approval Marks	RoHS compliance UL certificate DLC compliance
EU RoHS compliant	Yes

Application Conditions	
can it be used in closed luminaires	Yes
Product Data	
Order product name	14.5T8/COR/48-5CCT/MF18/G/DIM 25/1
Full product name	14.5T8/COR/48-5CCT/MF18/G/DIM 25/1
Order code	929003540104
Material Nr. (12NC)	929003540104
Numerator - Quantity Per Pack	1
Net Weight (Piece)	0.200 kg
EAN/UPC - Product/Case	046677579678
Numerator - Packs per outer box	25
EAN/UPC - Case	50046677579673

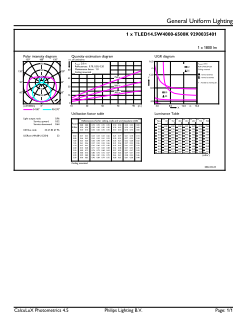
Dimensional drawing

Product	D1	D2	A1	A2	A3
14.5T8/COR/48-5CCT/ MF18/G/DIM 25/1	25.7 mm	28 mm	1,198.2 mm	1,205.3 mm	1,212.4 mm

Photometric data



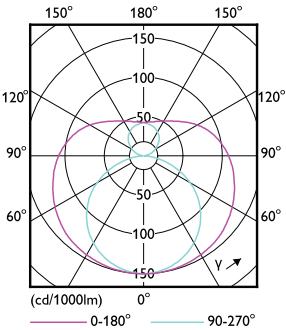
Spectral Power Distribution Colour - 14.5T8/COR/48-5CCT/MF18/G/DIM 25/1



General uniform lighting - 14.5T8/COR/48-5CCT/MF18/G/DIM 25/1

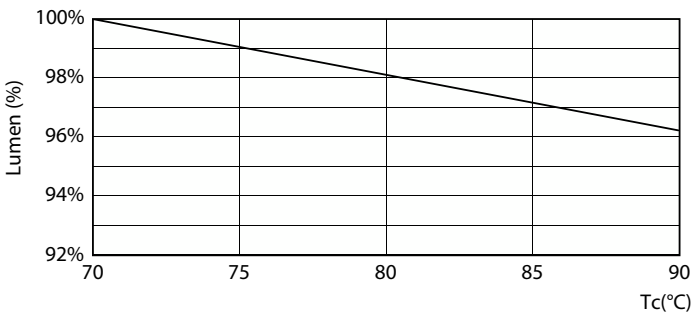
CorePro MainsFit (UL Type-B) T8

Photometric data

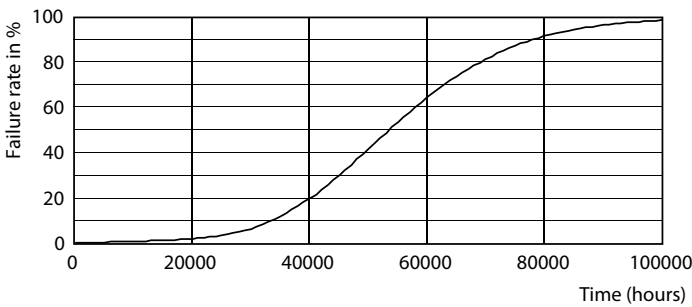


Light Distribution Diagram - 14.5T8/COR/48-5CCT/MF18/G/DIM 25/1

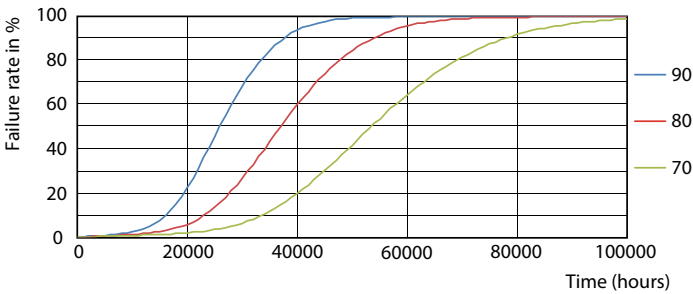
Lifetime



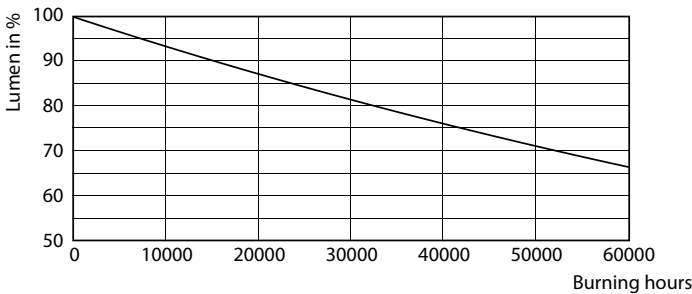
Lumen Maintenance Diagram - 14.5T8/COR/48-5CCT/MF18/G/DIM 25/1



Life Expectancy Diagram



LEDtube 50K 7090 FailureRate-LED



Lumen Maintenance Diagram - 14.5T8/COR/48-5CCT/MF18/G/DIM 25/1

CorePro MainsFit (UL Type-B) T8

Lifetime



LifetimeVsTc

