

# LED InstantFit Lamps

## 20T12 EM LED/48-4000 IFG 10/1

Philips LED T8 InstantFit Lamps are an ideal energy saving choice for existing linear fluorescent fixtures.

### Product data

<b>General Information</b>		<b>Warm Up Time to 60% Light (Nom)</b>		0.1 s
Cap-Base	G13 [ Medium Bi-Pin Fluorescent]	<b>Power Factor (Nom)</b>		0.9
Main Application	Industrial	<b>Voltage (Nom)</b>		120-270 V
Nominal Lifetime (Nom)	36000 h	<b>Temperature</b>		
Switching Cycle	50000X	<b>T-Ambient (Max)</b>		-20 °C
B50L70	36000 h	<b>T-Ambient (Min)</b>		35 °C
<b>Light Technical</b>		<b>T-Storage (Max)</b>		65 °C
Color Code	841 [ CCT of 4100K (841)]	<b>T-Storage (Min)</b>		-40 °C
Beam Angle (Nom)	240 °	<b>T-Case Maximum (Nom)</b>		65 °C
Initial lumen (Nom)	2100 lm	<b>Controls and Dimming</b>		
Luminous Flux (Rated) (Nom)	2100 lm	<b>Dimmable</b>		No
Rated Beam Angle	240 °	<b>Mechanical and Housing</b>		
Correlated Color Temperature (Nom)	4000 K	<b>Product Length</b>		1200 mm
Color Consistency	<6	<b>Approval and Application</b>		
Color Rendering Index (Nom)	82	<b>Energy Saving Product</b>		Yes
LLMF At End Of Nominal Lifetime (Nom)	70 %	<b>Suitable For Accent Lighting</b>		No
<b>Operating and Electrical</b>		<b>Energy Efficiency Label (EEL)</b>		A+
Input Frequency	60 Hz	<b>Approbation Marks</b>		RoHS compliance UL certificate
Power (Rated) (Nom)	20 W	<b>Energy Consumption kWh/1000 h</b>		23 kWh
Lamp Current (Max)	220 mA			
Lamp Current (Min)	90 mA			
Starting Time (Nom)	0.5 s			

LED InstantFit Lamps

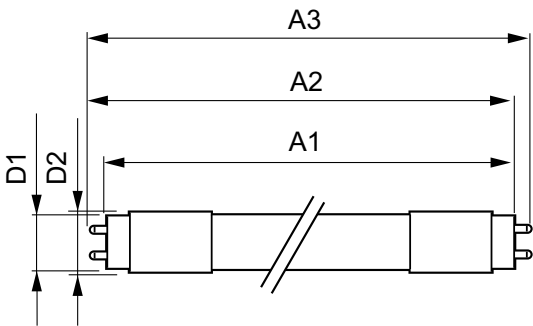
Product Data	
Order product name	20T12 EM LED/48-4000 IF G 10/1
EAN/UPC - Product	046677463113
Order code	463117
Numerator - Quantity Per Pack	1

Numerator - Packs per outer box	10
Material Nr. (12NC)	929001226504
Net Weight (Piece)	0.001 kg

Warnings and Safety

- Perform a visual inspection to ensure lamp holders (or sockets) are not damaged or loose. If the lamp holders (or sockets) are damaged, corroded, charred, blackened or loose, contact a qualified electrician for proper replacement.
- Please refer to the ballast compatibility guide located at [www.philips.com/instantfit](http://www.philips.com/instantfit).

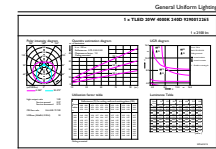
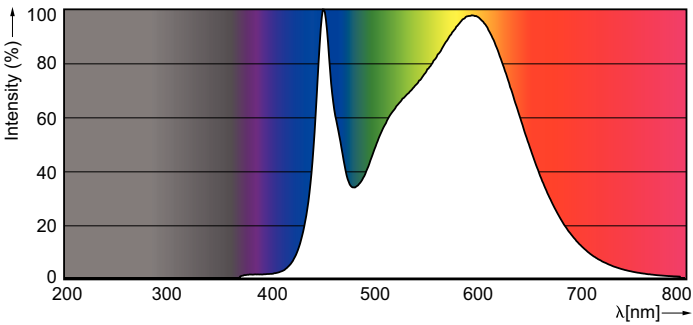
Dimensional drawing



TLED T12 120-277V 20-34/40W 4000K G13 ND

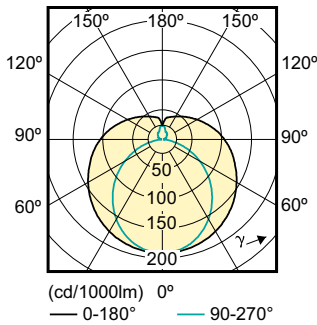
Product	D1	D2	A1	A2	A3
20T12 EM LED/48-4000 IF G 10/1	26 mm	28 mm	1198 mm	1205 mm	1212 mm

Photometric data



LED InstantFit Lamps

Photometric data



LEDtube 1200mm 18 W T8 C W G

