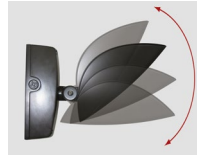


The VEK1-LED35 is an adjustable multi-purpose fixture that replaces traditional wall packs and floods. The head can be aimed up or down where light is needed. The fixture includes a photocell for dusk to dawn operation.



### APPLICATIONS

**Ideal for use on outdoor walls along perimeters of buildings, townhouses, condominiums, schools. Can be used as an uplight in indoor/canopy applications. (Do not use as an outdoor uplight.)**

Project	
Type	
Date	
Notes	

### SPECIFICATIONS

#### Construction

Die cast aluminum housing with tamper proof stainless steel hardware. Clear tempered glass lens with a gasket. There are 5 conduit entries and the unit has a leveling bubble on the back box for proper alignment.

#### LED configuration

The VEK1-LED35 has Citizen LED COBs that deliver 4,195 lumens. The LEDs have a colour temperature of 5000K, a CRI of greater than 70 and an operating temperature range of -40° C to +40° C. 4000K and 3000K also available.

#### Mounting

Wall mount, ceiling mount or ground mounted on a concrete pad. Unit can be mounted to standard junction boxes.

#### Adjustable head

The fixture can be aimed 0° - 90° delivering more lumens on the ground where needed.

#### Electrical

Total system wattage of the unit is 34.4W. The unit has a high efficiency dimmable driver that operates at 120V standard. 277V and 347V also available.

#### Finish

Standard finish is Bronze, Black, or White. Please consult factory for custom colour.

#### Photocell

Included for dusk to dawn operation or custom requirements.

#### Accessories

Goof tray, On/Off Motion Sensor, Dimmable Motion Sensor.

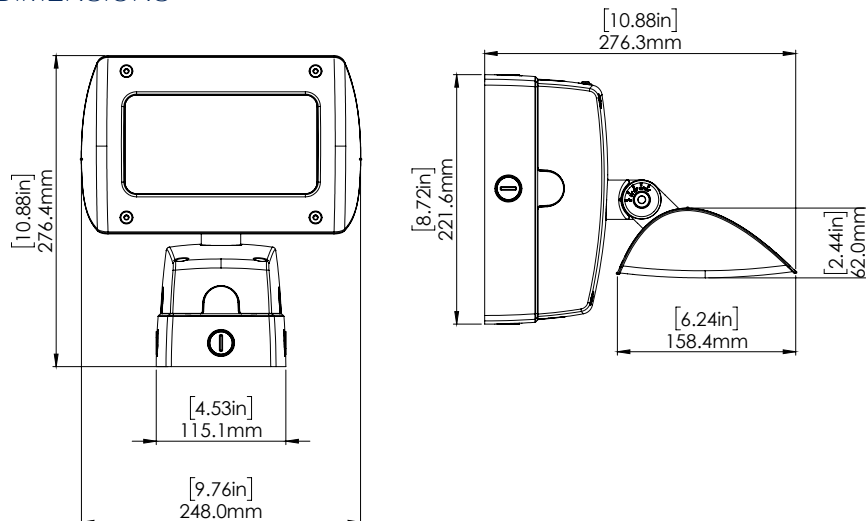
#### Sign light

The VEK Series of fixtures can also be used with various arms for sign lighting. Contact us to learn more.

Input Watts	<b>34.4W</b>
Lumens	<b>4,195</b>
Efficacy	<b>122 lumens per watt</b>

Operating Temperature	<b>-40°C to +40°C</b>
Certification	<b>cULus, DLC</b>
Warranty	<b>5 Years</b>
LED life	<b>100,000 hours</b>

### DIMENSIONS

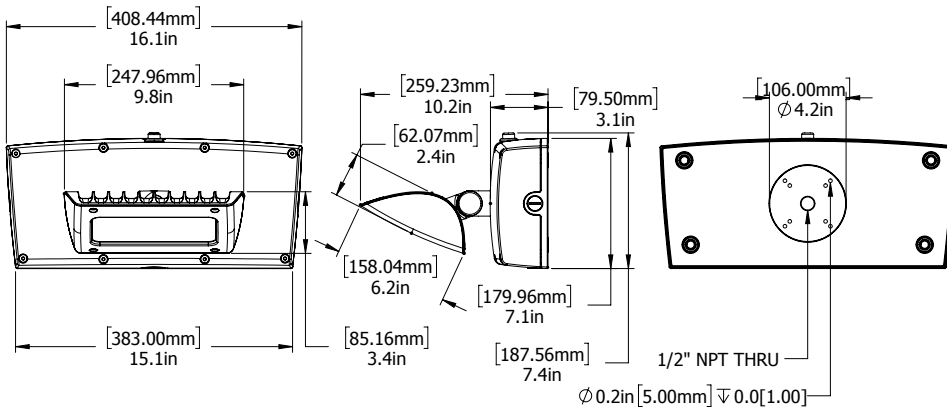


With Optional Motion Sensor



## OPTIONS

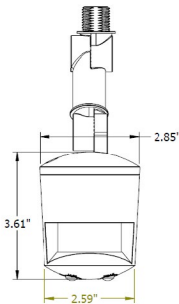
### VEK WITH BATTERY BACKUP



#### MS180S On/Off Sensor (SMS)

##### On/Off Sensor

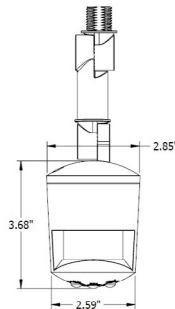
The MS180S is a fully adjustable motion sensor that can be set for dusk to dawn operation or other custom applications.



#### MS180DIM 0 - 10V Dimmable Smart Sensor (DMS)

##### Dimmable Smart Sensor

The MS180DIM is a fully adjustable, dimmable smart sensor that allows you to provide reduced light levels as low as 10% when no motion is detected.



#### FEATURES: DIMMABLE SMART SENSOR

- Adjustable light levels ensure fixture is fully on when needed and dimmed or off when not.
- Smart dimming reduces electrical load and heat generated by the fixture resulting in increased fixture life.
- Sensor has an extension arm with two rotatable joints that allow mounting from the bottom conduit access or the side conduit access of fixture.
- Daylight sensor without smart dimming (MS180S) also available in the same design.



#### VEK Sign Light

Wall mount sign light . Also available as a roof mount.

(order separately)



#### Goof Tray

VEK with a Goof Tray to hide damage and discoloration on mounting surface.

(order separately)

Contact us to learn more.

## ORDERING GUIDE

VEK1	-	LED35	-		-		-	DIM	-		
		VOLTAGE		COLOUR TEMP		FINISH		DRIVER		OPTIONS	
		A - 120V*		5K - 5000K*		BRZ - BRONZE*		DIM - Dimmable*		PC - Photocell*	
		F - 277V		4K - 4000K		BLK - BLACK				SMS - On/Off Sensor	
		C - 347V		3K - 3000K		WHT - WHITE				DMS - Dimmable smart sensor	
						CC - Custom Colour				BBK - Battery Backup	

\* Standard configuration

Consult customer service to add the dimmable smart sensor (MS180DIM) or the on/off sensor (MS180S) to the VEK fixture as a combined unit.

Goof tray accessories can be ordered separately