

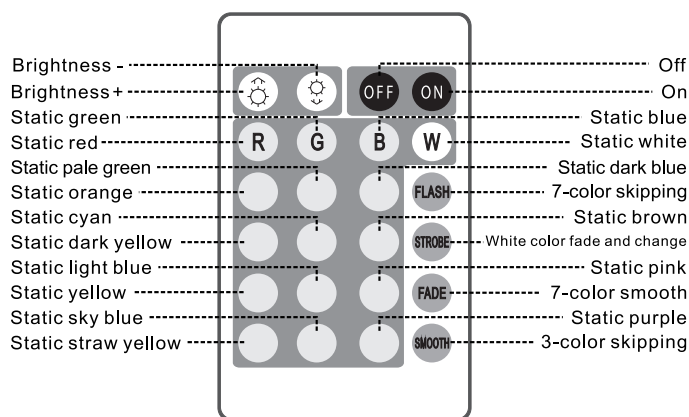
# LED LOW VOLTAGE TAPE LIGHT INSTALLATION INSTRUCTIONS



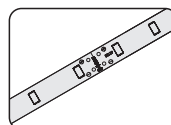
| Order code | Description                             | Watts | Volts | Operating Temperature     | Maximum Extendible Length |
|------------|---|-------|-------|---------------------------|---------------------------|
| 61953      | LED/TAPE/16.4'/5050/RGB KIT/12V/50M/STD | 27    | 12VDC | -40°C/-40°F to 50°C/122°F | 5 m (16.4 ft)             |
| 61954      | LED/TAPE/16.4'/5050/WW KIT/12V/50M/STD  | 28    | 12VDC | -40°C/-40°F to 50°C/122°F | 5 m (16.4 ft)             |
| 61955      | LED/TAPE/16.4'/5050/CW KIT/12V/50M/STD  | 28    | 12VDC | -40°C/-40°F to 50°C/122°F | 5 m (16.4 ft)             |

**WARNING:** Suitable for use in dry and damp locations (IP64) where not directly exposed to water. Do not disassemble or modify the module or touch LED surface with sharp objects. Turn power off before installing the LED tape light. Make sure that you keep the surface clean before installing tape light. Do not use any acid or alkali adhesive to fix the LED tape lights. Do not place any adhesive on the LED tape light surface prior to installation as it may damage the LEDs.

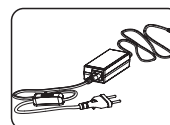
The controller works with a remote control, and the instruction details of the controller are shown as follows.



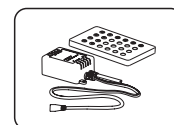
## RGB KIT INCLUDES:



15 m (16.4 ft)  
low-voltage tape light

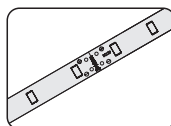


1 Power supply

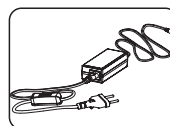


1 RGB Controller with  
1 remote control

## COOL WHITE / WARM WHITE KIT INCLUDES:



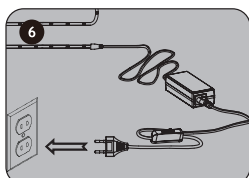
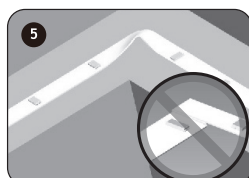
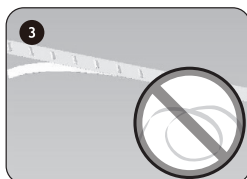
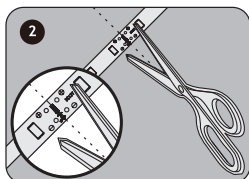
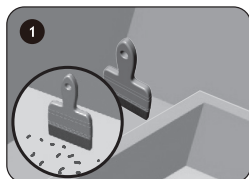
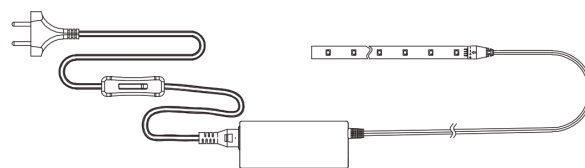
15 m (16.4 ft)  
low-voltage tape light



1 Power supply

## INSTALLATION INSTRUCTIONS - COOL WHITE / WARM WHITE

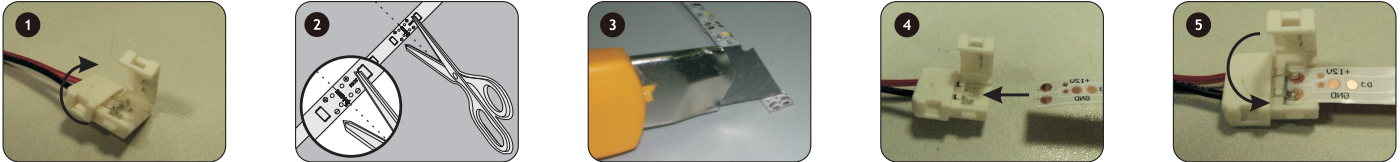
- Clean the mounting surface before installation.
- Cut the strips to the desired length.  
a) NOTE: Cut the tape at the printed marks.
- Carefully expose 3M™ adhesive tape.
- Locate the mounting position and stick the LED tape light on the mounting surface.  
a) NOTE: Do not press the LEDs.
- Tape light can be bent on the mounting surface.  
a) NOTE: Do not bend further than a right angle.
- Turn power on, then you can control the LED tape light with the switch.  
a) NOTE: Keep the power supply with switch control out of reach of children!



# LED LOW VOLTAGE TAPE LIGHT INSTALLATION INSTRUCTIONS

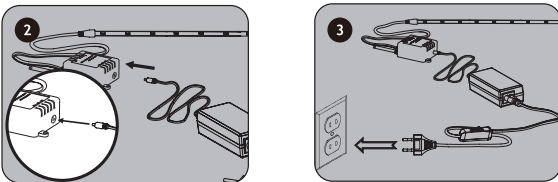
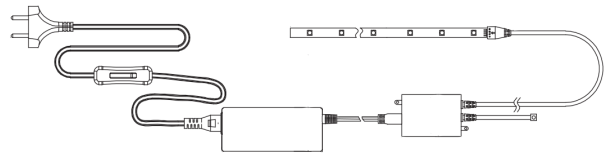
## IF CUTTING THE COOL WHITE / WARM WHITE TAPE LIGHT AND USING A CONNECTOR

1. Open the connector flap.
  2. Cut the strip to the desired length.
  3. Remove 0.5 cm (3/16 in.) of the EPOXY cover of the tape light.
  4. Insert the cut LED tape light into the connector.
  5. Close the connector.
- a) NOTE: The red lead always connects to positive and the black lead always connects to negative.



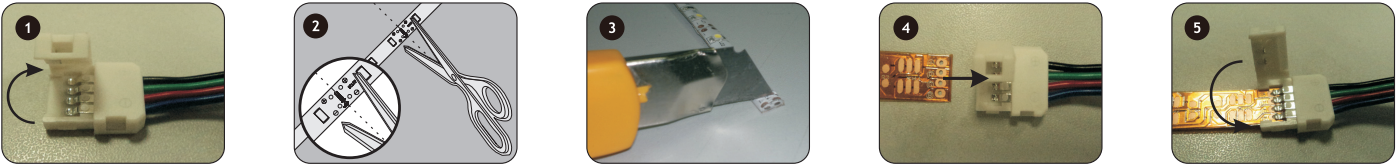
## INSTALLATION INSTRUCTIONS - RGB

1. Follow installation instructions STEP #1-5 from COOL WHITE / WARM WHITE
  2. Connect the controller to Power Supply.
  3. Turn on power, then you can control the LED tape light with the switch.
- a) NOTE: Keep the power supply with switch control out of reach of children!



## IF CUTTING THE RGB TAPE LIGHT AND USING A CONNECTOR

1. Open the connector flap.
  2. Cut the strip to the desired length.
  3. Remove 0.5 cm (3/16 in.) of the EPOXY cover of the rope light.
  4. Insert the cut LED tape light into the connector.
  5. Close the connector.
- a) NOTE: + connects to + and - connects to -.



## DIMENSION DIAGRAMS:

1. COOL WHITE / WARM WHITE
2. RGB

