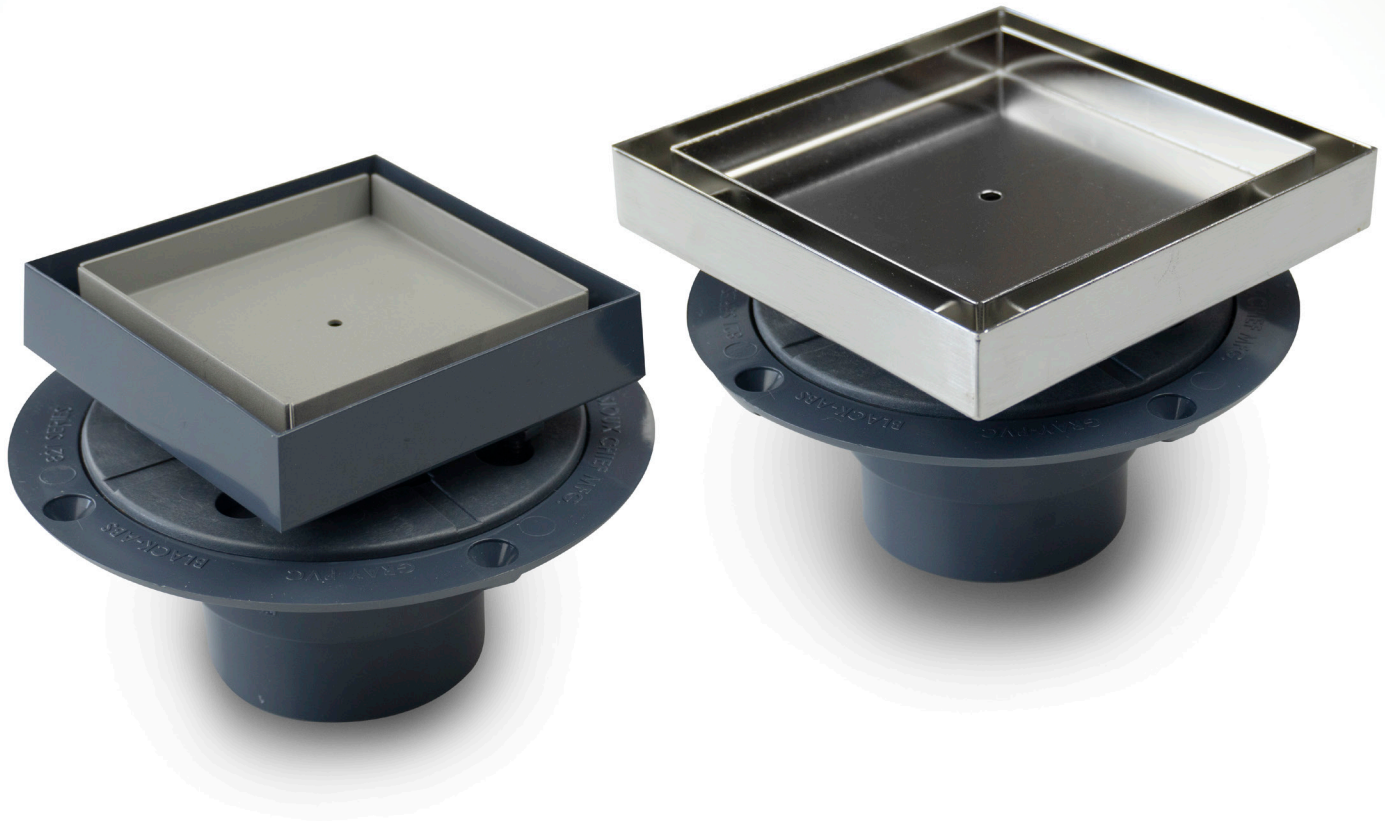


Tile-In Shower Drains

 821 Series



Stylish

Contemporary design creates the look of a seamless tile floor. Water "disappears" into the perimeter drain slot

Practical

Installs easily – no special tools or techniques needed.

Works with any décor – No need to match the finish of the fixture trim.



Supply

Drainage

Support

Specialties

www.siouxchief.com

TAKE THE FIELD.



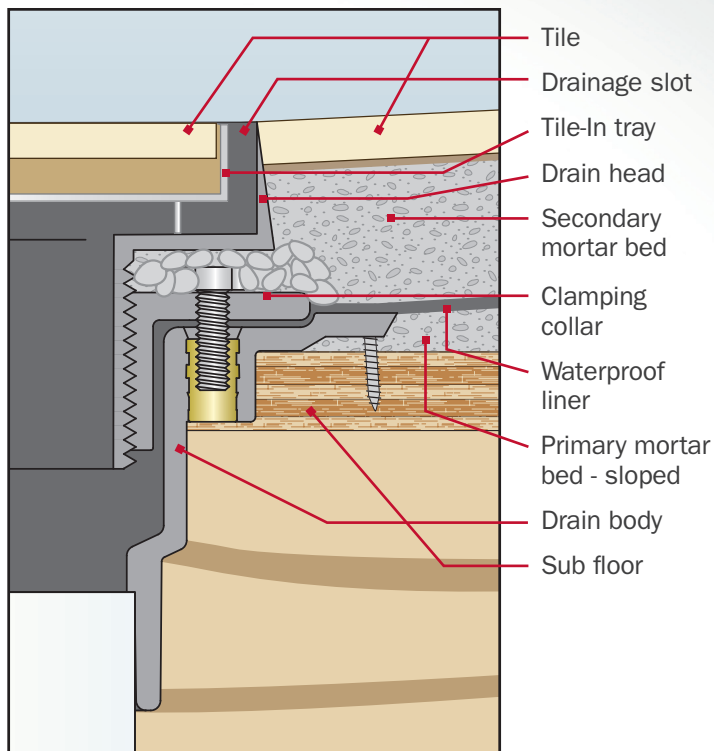


Installs like a standard drain head, but provides the look of a seamless tile floor.



Removable hair strainer included with ABS head models

Easy Installation



» Buying Information

PVC ITEM NO.	ABS ITEM NO.	DESCRIPTION	MIN. QTY.	CASE QTY.
SHOWER DRAIN WITH TILE-IN HEAD				
821-2PT4A	821-2AT4A	Shower drain with 2" Sch. 40 hub connection. 4" ABS head - Stainless tile-in tray	1	1
821-T2PT4A	821-T2AT4A	Item listed above, with DoubleDuty™ test plug	1	1
821-2PT5A	821-2AT5A	Shower drain with 2" Sch. 40 hub connection. 5" ABS head - Stainless tile-in tray	1	1
821-T2PT5A	821-T2AT5A	Item listed above, with DoubleDuty™ test plug	1	1
821-2PTQ	821-2ATQ	Shower drain with 2" Sch. 40 hub connection. 5" Stainless head - Stainless tile-in tray	1	1
821-T2PTQ	821-T2ATQ	Item listed above, with DoubleDuty™ test plug	1	1
SEPARATE COMPONENTS				
821-2LT4A		Drain head only - 4" ABS head - Stainless tile-in tray - 2" MIP thread	1	1
821-2LT5A		Drain head only - 5" ABS head - Stainless tile-in tray - 2" MIP thread	1	1
821-2LTQ		Drain head only - 5" Stainless head - Stainless tile-in tray - 2" MIP thread	1	1
821-MHP2	821-MHA2	Drain body & collar only for 821 series	25	25
821-TMHP2	821-TMHA2	Item listed above, with DoubleDuty™ test plug	25	25