

► **Code Number**

3018141

► **Description**

Concealed Water Closet Flushometer, for Stainless Steel Combination Fixtures. For use with: Acorn® • Bradley® • Metcraft® (Series 3000) • Willoughby® and similar fixtures.

► **Flush Cycle**

Model 603-1.28 (1.28 gpf/4.8 Lpf)

► **Specifications**

Quiet, Concealed, Rough Brass Closet Flushometer for either left or right hand supply with the following features:

- PERMEX® Synthetic Rubber Diaphragm with Dual Filtered Fixed Bypass
- Metal Direct Acting, Non-Hold-Open Push Button with a Triple Seal Handle Packing
- 1" I.P.S. Wheel Handle Bak-Chek™ Angle Stop
- Vacuum Breaker
- Elbow Flush Connection and Coupling for 1/2" NPT Back Inlet (for connection in the pipe chase — flush connection through the wall not provided by Sloan)
- Chrome Plated Exposed Flushometer Parts
- Non-Hold-Open Handle, Fixed Metering Bypass and No External Volume Adjustment to Ensure Water Conservation
- Flush Accuracy Controlled by CID Technology
- Diaphragm, Handle Packing, Stop Seat and Vacuum Breaker molded from PERMEX® Rubber Compound for Chloramine Resistance

Valve Body, Cover and Tailpiece shall be in conformance with ASTM Alloy Classification for Semi-Red Brass. Valve shall be in compliance to the applicable sections of ASSE 1037.

► **L Dimension**

2 3/4 inch LDIM

Specify the "L" Dimension for the proper length of the Push Button Assembly. The "L" Dimension is equal to the Wall Thickness (to the nearest whole inch) plus 4 3/4".

► **Variations**

AFD Shorter Vacuum Breaker - for use with Anti-Flood Device (Anti-Flood Device NOT provided by Sloan) \*Not required for use with Bradley Flood Buster®

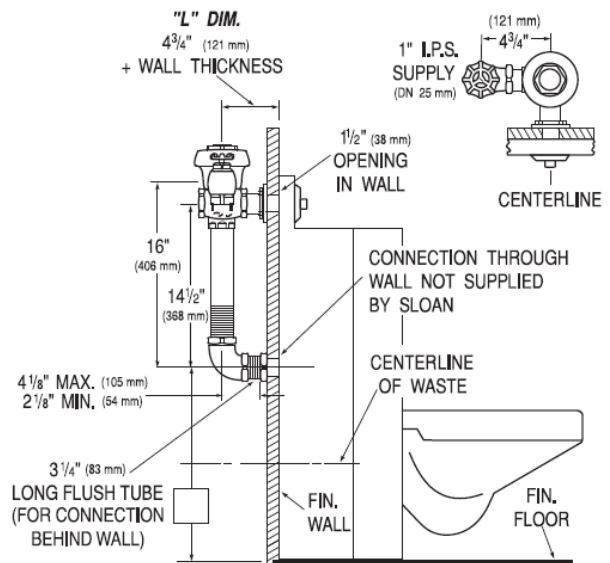
ES Solenoid Operated (specify 24 VAC or 120 VAC)

ESM Solenoid Operated with Modular Plug for use with Sloan PWT Systems (24 VAC only)

TP Trap Primer Elbow

WB For installation with Sloan Easy Access® Wall Box

XYV Less Vacuum Breaker



► **Compliance & Certifications**



Made In The  
**USA**

This space for Architect/Engineer Approval