

Project: _____ Type: _____
 Drawn by: _____ Catalogue #: _____ Date: _____

Individual Spec Sheet

L2WMG

LED LINKABLE WRAPAROUND

ORDERING INFORMATION

Order code: 68663
Model number: L2WMG-24-1-G2
UPC: 069549018273
Case quantity: 12

PHYSICAL DATA

Net weight (lbs): 2.65
Dimensions in (cm): 24 (61)
Lens material: Frosted polycarbonate
Housing material: White powder coating steel
Mounting: Surface wall and ceiling mount

PERFORMANCE DATA

Watts (W): 23
Volts (V AC): 120-277
Color temperature (K): 4 000
Lumen output (lm): 2 695
Efficacy (lm/W): 115
CRI: 84
Life L70 (h): 54 000
Tested LM-80 (h): 9 000
Dimming: 0-10 V
Power factor: 0.94
THD (%): 12
Frequency (Hz): 50/60
Surge protection (kV): 1
Input current (A): 0.5
Output current (mA): 500
Operating temp. range: -20°C to 40°C (-4°F to 104°F)

¹ Typical color temperature range: +/- 5 %.

² Lumen values are derived from photometric testing. Initial lumens range: +/- 10 %.

³ Life hours are derived from IESNA LM80-08 testing report and projected per IESNA TM-21-11 extrapolations.

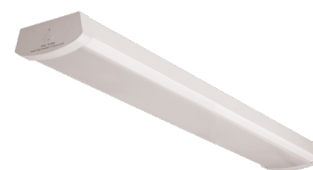
COMPATIBLE ACCESSORIES

Order code	Type
68858	Linkable Connector (No cable) ¹
68859	12" Linkable Cable Connector ¹
68860	48" Linkable Cable Connector
68861	72" Linkable Cable Connector
68862	96" Linkable Cable Connector
69762	Conduit entry kit for 2" ²

¹ One piece is included in the box, extra units can be purchased separately.

² Kit includes 2 end caps and 1 5VA lens for internal wiring

This lighting equipment complies with Canadian standard ICES-005 for use in residential applications.
 Data is based upon tests performed in a controlled environment.
 Actual performance can vary depending on operating conditions. Specifications are subject to change without notice.



Included Connectors

5 yrs
warranty



quick
ship



LED
fixture

1
dimmable

6

damp
location



ICES
005



Not all products are qualified on the DLC QPL.
 To view our DLC qualified products, please
 consult the **DLC Qualified Products List** at
www.designlights.org/search.

**¹ Dimming with row mounting only available
 when hardwired.**

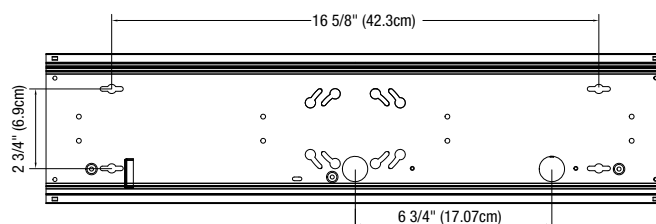
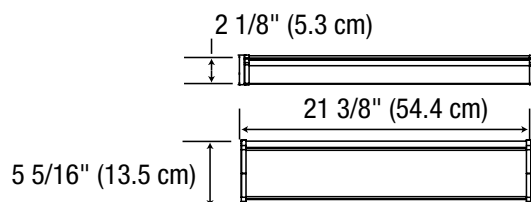
COMPATIBLE DIMMERS¹

Brand	Model
Leviton	DD 710 DS 710
Lutron	DVSTV NOVA NTSTV DV
Legrand	RH4FBL3PTC WS4FBL3P

Dimming range: 10%-100%

¹ This table shows dimmers that have been tested and have demonstrated proper operation under normal conditions. Each installation being unique, various factors such as load, common neutrals or other electrical products on the circuit can, in certain instances, cause variance in system performance. Read and comply to the dimmer installation instructions. Consult dimming system manufacturer for additional support in operation. Some dimmers may require more than one product for stable operation. Stanpro recommends to use dimmers designed to work with LED products. Older dimmers designed for incandescent products may cause erratic operation.

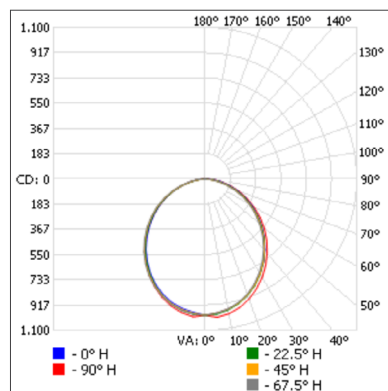
DIMENSIONS



PHOTOMETRIC DATA¹

68663 • L2WMG-24-1-G2 • 2 682.6 lm

Polar candela distribution



Zonal lumen summary

Zone	Lumens	% Fixture
0-30	752.8	28.1%
0-40	1 216.1	45.3%
0-60	2 099.5	78.3%
60-90	561.3	20.9%
70-100	255.9	9.5%
90-120	12.4	0.5%
0-90	2 660.8	99.2%
90-180	21.8	0.8%
0-180	2 682.6	100%

Illuminance at a distance

Center beam fc		Beam width	
2.0'	247.6	5.1'	5.3'
4.0'	61.9	10.2'	10.6'
6.0'	27.5	15.2'	15.9'
8.0'	15.5	20.3'	21.2'
10.0'	9.9	25.4'	26.4'

■ Vert. spread: 103.6°
■ Horiz. spread: 105.8°

¹ Complete IES files available on our website.

Qty	Description	Price

I accept the specifications of the luminaire configuration mentioned above.

Name: _____

Company: _____

Signature: _____

Date: _____

Data is based upon tests performed in a controlled environment. Actual performance can vary depending on operating conditions. All products are subject to change or may be discontinued any time without notice.