

Project: _____ Type: _____
 Drawn by: _____ Catalogue #: _____ Date: _____

Individual Spec Sheet

DUOLED

HARDWIRED DRIVER AND DIMMER SWITCH

ORDERING INFORMATION

Order code: 68829
 Model number: DRIVER-DIMMER/S2/24V/100W
 UPC: 069549019546
 Case quantity: 25

PHYSICAL DATA

Dimensions: 4 1/8" x 2 1/8" x 1 3/8" (105 mm x 54 mm x 35 mm)
 Faceplate finish: Glossy White, Glossy Almond, Glossy Brown
 Input/Output Wire gauge (AWG): 18
 Input/Output Wire length (in): 7
 Mounting: Recessed

PERFORMANCE DATA

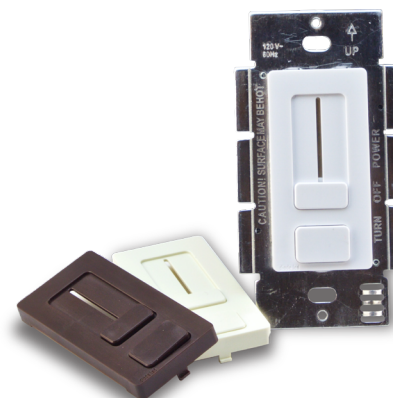
Output power (W): 100
 Output voltage (V DC): 24
 Input voltage (V AC): 120
 Power factor: >0.9
 Frequency (Hz): 60
 Input current (A): <1
 Output current (mA): 4 200
 Environment: Dry
 Operating temp. range: 0° C to 40° C (32° F to 104° F)

COMPATIBLE PRODUCTS - LED TAPES

Order code	Description
65881	TAPE/16.4'/1.5W/30K/24V/IP22/60/8MM/STD
65882	TAPE/16.4'/1.5W/40K/24V/IP22/60/8MM/STD
65883	TAPE/16.4'/2.9W/24K/24V/IP22/120/8MM/STD
65884	TAPE/16.4'/2.9W/27K/24V/IP22/120/8MM/STD
65885	TAPE/16.4'/2.9W/30K/24V/IP22/120/8MM/STD
65886	TAPE/16.4'/2.9W/35K/24V/IP22/120/8MM/STD
65887	TAPE/16.4'/2.9W/40K/24V/IP22/120/8MM/STD
65888	TAPE/16.4'/2.9W/50K/24V/IP22/120/8MM/STD
65889	TAPE/16.4'/4.4W/30K/24V/IP22/180/8MM/STD
65890	TAPE/16.4'/4.4W/40K/24V/IP22/180/8MM/STD
65891	TAPE/65.6'/2.9W/30K/24V/IP22/120/8MM/STD
65892	TAPE/65.6'/2.9W/40K/24V/IP22/120/8MM/STD
65893	TAPE/16.4'/2.9W/30K/24V/IP67/120/8MM/STD
65894	TAPE/16.4'/2.9W/40K/24V/IP67/120/8MM/STD

COMPATIBLE PRODUCTS - LED SLIM LINE BARS ARMONIA

Order code	Description
64576	LUCS/5.9IN/2.5W/27K/STD
64577	LUCS/5.9IN/2.5W/30K/STD
64578	LUCS/5.9IN/2.5W/40K/STD
64579	LUCS/11.8IN/5W/27K/STD
64580	LUCS/11.8IN/5W/30K/STD
64581	LUCS/11.8IN/5W/40K/STD
64582	LUCS/23.6IN/9W/27K/STD
64584	LUCS/23.6IN/9W/40K/STD
64585	LUCS/39.3IN/15W/27K/STD
64586	LUCS/39.3IN/15W/30K/STD
64587	LUCS/39.3IN/15W/40K/STD



5
yrs
warranty

quick ship

LED fixture

dimmmable fixture

ICES 005

dry location

constant current

UL CERTIFIED

FC

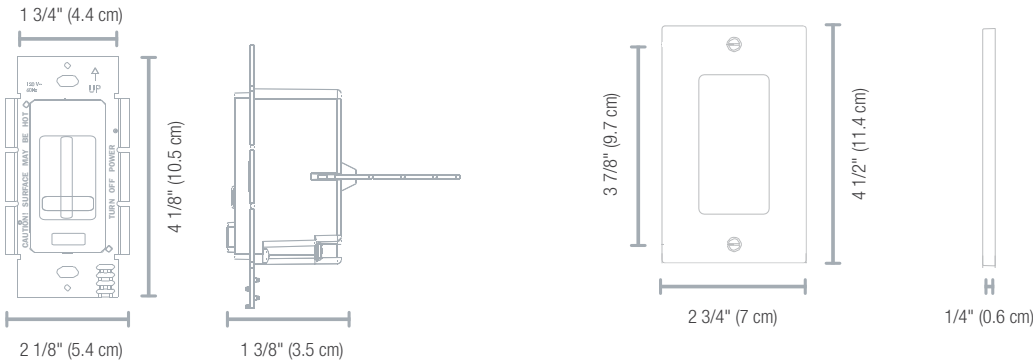
This lighting equipment complies with Canadian standard ICES-005 for use in residential applications.
 Data is based upon tests performed in a controlled environment.
 Actual performance can vary depending on operating conditions. Specifications are subject to change without notice.

COMPATIBLE ACCESSORIES

Order code	Model number	Finish	Case qty (master)
67073	DRIVER-DIMMER/TRIM/WH/STD	Glossy white	25



DIMENSIONS



Qty	Description	Price
-----	-------------	-------

I accept the specifications of the luminaire configuration mentioned above.

Name: _____
Company: _____
Signature: _____

Date: _____

Data is based upon tests performed in a controlled environment. Actual performance can vary depending on operating conditions.
All products are subject to change or may be discontinued any time without notice.