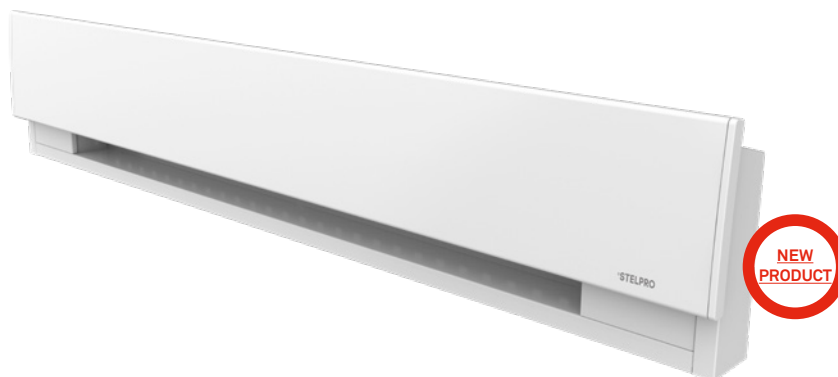


SPR | PRIMA™

HIGH-END COMPACT BASEBOARD



PRIMA™

ELEGANCE, DISCRETION AND EFFICIENCY

The PRIMA electric baseboard has a distinctive compact format that adapts to various applications without compromising on performance. Thanks to its safe and innovative housing design with concealed elements, it's easy to clean and maintain. Sleek and elegant, PRIMA adds a modern touch to any room.

COMPACT AND EFFICIENT

UP TO 25% SHORTER THAN A
TRADITIONAL BASEBOARD

SAFER HOUSING

6 MM (1/4 IN.) OPENINGS BLOCK
ACCESS TO ELEMENTS

IMPACT RESISTANT

REINFORCED FRONT PANEL

FAST AND EASY INSTALLATION

GUIDE MARKS TO FACILITATE
MOUNTING TO WALL

EASY TO CLEAN

TWO-CLICK REMOVABLE FRONT PANEL



ULTRA PRECISE ELECTRONIC
THERMOSTAT (OPTIONAL)

IDEAL FOR:

living room, dining room, kitchen, bedroom, office

COLOURS

- **standard:** white
- **ORORA (optional):** refer to www.stelpro.com/en-CA/orora

FINISH

- epoxy-polyester powdercoat

MANUFACTURING

- 22-gauge annealed galvanized steel housing and 20-gauge one-piece front panel that can support 99.8 kg (220 lbs) at the centre
- full-length thermal protection with automatic reset
- discreet air inlet; air exits from the top for maximum air circulation
- full-length wireway

ELEMENT

- single tubular, stainless steel sheathed element with boxed aluminum fins for improved heat dissipation; the element is securely fastened at its centre, floating in nylon sleeves at each end, eliminating expansion and contraction noises during heat cycles

CONTROL

- wall thermostat (not included)
 - use of a °STELPRO electronic thermostat is strongly recommended
- built-in single pole electronic thermostat that can be installed in the right or left junction box (optional)
- low voltage relay kit and disconnect switch (optional)

INSTALLATION

- surface mounted
- connection compartment at each end
- BX and clamp knockouts for the NMD cables located at each end, at the back and under the unit
- oblong mounting holes at 1-inch intervals (top and bottom) and marks every 8 inches to locate studs

WARRANTY

- five years, *three years on electronic components and lifetime warranty on heating element (for original owner)

°STELPRO

°STELPRO reserves the right to modify descriptions, manufacturing specifications or prices without prior notice. No returns accepted on optional-colour products. For all the latest models and prices, please refer to our website at www.stelpro.com.



TECHNICAL SPECIFICATIONS

325 W DENSITY PER LINEAR FOOT*			275 W DENSITY PER LINEAR FOOT*			TENSION	TOTAL LENGTH		LENGTH ON WALL		WEIGHT	
CODE	WATTS	PRICE	CODE	WATTS	PRICE	VOLTS	MM	IN.	MM	IN.	KG	LB
SPR0501	500	78.00	SPRM0371	375	84.00	120	566	22 1/4	556	21 7/8	2.6	5.7
SPR0508	500	78.00	SPRM0378	375	84.00	208	566	22 1/4	556	21 7/8	2.6	5.7
SPR0502	500/375	63.00	SPRM0372	375/280	69.00	240/208	566	22 1/4	556	21 7/8	2.6	5.7
SPR0503	500	78.00	---	---	---	347	566	22 1/4	556	21 7/8	2.6	5.7
SPR1001	1000	88.00	SPRM0751	750	94.00	120	916	36 1/16	906	35 11/16	3.5	7.7
SPR1008	1000	88.00	SPRM0758	750	94.00	208	916	36 1/16	906	35 11/16	3.5	7.7
SPR1002	1000/750	73.00	SPRM0752	750/560	79.00	240/208	916	36 1/16	906	35 11/16	3.5	7.7
SPR1003	1000	88.00	SPRM0753	750	94.00	347	916	36 1/16	906	35 11/16	3.5	7.7
SPR1501	1500	105.00	SPRM1251	1250	111.00	120	1267	49 7/8	1257	49 1/2	4.4	9.7
SPR1508	1500	105.00	SPRM1258	1250	111.00	208	1267	49 7/8	1257	49 1/2	4.4	9.7
SPR1502	1500/1125	90.00	SPRM1252	1250/940	96.00	240/208	1267	49 7/8	1257	49 1/2	4.4	9.7
SPR1503	1500	105.00	SPRM1253	1250	111.00	347	1267	49 7/8	1257	49 1/2	4.4	9.7
---	---	---	---	---	---	120	---	---	---	---	---	---
SPR2008	2000	127.00	SPRM1758	1750	133.00	208	1618	63 11/16	1608	63 5/16	5.3	11.7
SPR2002	2000/1500	112.00	SPRM1752	1750/1315	118.00	240/208	1618	63 11/16	1608	63 5/16	5.3	11.7
SPR2003	2000	127.00	SPRM1753	1750	133.00	347	1618	63 11/16	1608	63 5/16	5.3	11.7

Add W for white (consult the optional colours chart or contact your *STELPRO representative for all other colours).

*Densities are averages. --- not available

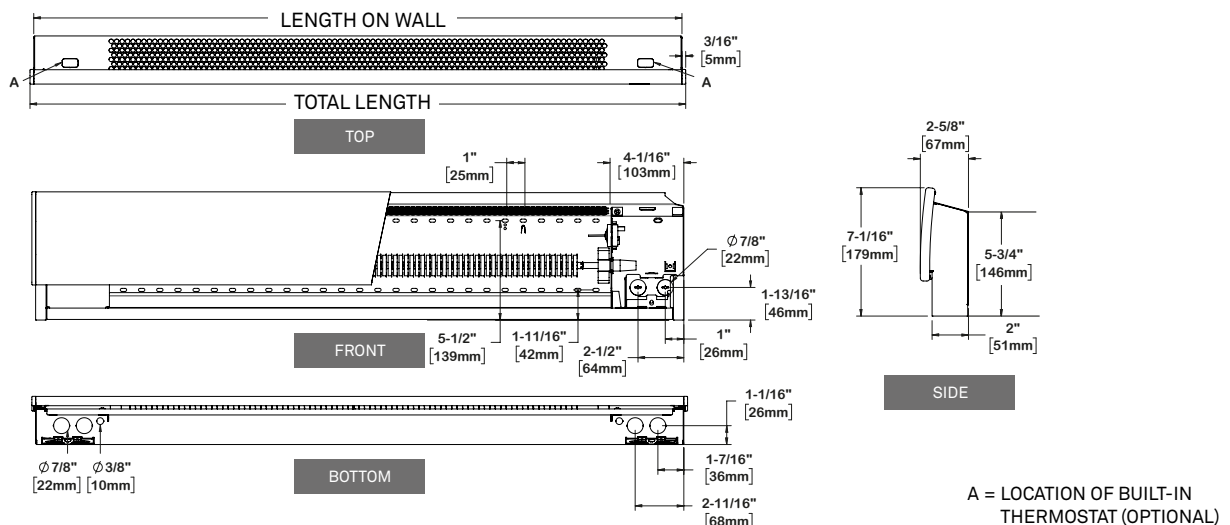
ACCESSORIES

PRODUCT	DESCRIPTION	PRICE
SIBTE12C	built-in electronic thermostat – Celsius [120 V-240 V]	53.00
SPRRE153*	built-in electronic low voltage relay [15 A @ 120 V-347 V]	48.00
SPRRE153T*	built-in electronic low voltage relay with 24 V transformer [15 A @ 208 V-347 V]	62.00
SPRRM120T*	built-in electromechanical relay with 24 V transformer [6000 W @ 120 V]	70.00
SPRRM240T*	built-in electromechanical relay with 24 V transformer [6000 W @ 240 V and 5200 W @ 208 V]	67.00
SPRRM347T*	built-in electromechanical relay with 24 V transformer [6000 W @ 347 V]	70.00
SPRRM347C*	built-in electromechanical relay without 24 V transformer [6000 W @ 120 V-347 V]	52.00

Electronic relays can receive a PWM (pulsed width modulation) or all-or-nothing (on/off) signal.

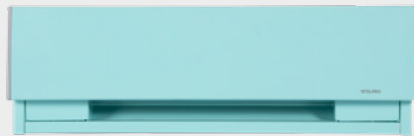
*Factory installation only

TECHNICAL DRAWINGS



*STELPRO reserves the right to modify descriptions, manufacturing specifications or prices without prior notice. No returns accepted on optional-colour products.
For all the latest models and prices, please refer to our website at www.stelpro.com.

DISCOVER OUR RANGE OF COLOURS



TURQUOISE



MOSS GREEN



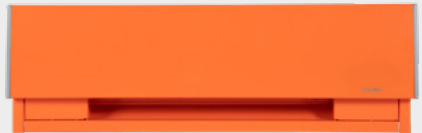
RED



DENIM BLUE



CHARCOAL



ORANGE





*STELPRO reserves the right to modify descriptions, manufacturing specifications or prices without prior notice. No returns accepted on optional-colour products.
For all the latest models and prices, please refer to our website at www.stelpro.com.