



VOICE > DATA > VIDEO > SECURITY



CONNECTORS > TOOLS > CABLES

Transglobal Systems of Canada Inc.
39-6635 Kitimat Road | Mississauga, Ontario L5N 6J2
Tel: 905 813 8762 | Fax: 905 813 7329 | Email: info@tsoc.com

VALUE PROPOSITION

- Transglobal Systems Of Canada Incorporated and the TSOC trademark were established in 1983.
- TSOC products are manufactured to Industry Compliant standards to ensure Quality and Safety.
- TSOC Connectors, Tools and Cables are used for installation in Voice, Data, Video and Security networks.
- TSOC products are approved for use by Telephone Companies, Cable TV Operators, Network Cabling Professionals and Electrical Contractors.
- TSOC products are specified by Consultants, Engineers and Installers and available through Global, National, and Distribution Regional Channels.
- TSOC provides Custom Cable Assembly, Outsource of Specialty Material, Repackage and Kit products.
- TSOC does not guarantee compatibility or performance when used with other manufacturers products.



Voice Solutions



TELECOM PRODUCTS

- Surface Mount Jacks
- Flush Mount Jacks
- Tools
- Bulk Cordage
- Telephone Cords
- Adapters & Splitters
- BIX Cross Connect
- Keystone Patch Panels & Outlets
- Keystone Modules

Page 3

TEST EQUIPMENT & TOOLS	4
MODULAR PLUGS & MODULAR LINE CORD	5
CONNECTING BLOCKS, DRYWALL BRACKETS & FLUSH MOUNT JACKS	6
FLUSH MOUNT JACKS	7
SURFACE MOUNT JACKS & ADAPTERS	8
HARMONICAS & KEYSTONE SURFACE BOXES	9
KEYSTONE SURFACE BOXES	10
KEYSTONE SURFACE BOXES & KEYSTONE MODULES	11
KEYSTONE PATCH PANELS & KEYSTONE WALL PLATES	12
KEYSTONE WALL PLATES	13
STAINLESS STEEL KEYSTONE PLATES	15
SPLICE CONNECTORS & WEATHERPROOF OUTLETS	16
SPLICE CONNECTORS & WEATHERPROOF OUTLETS	16
CRIMP TOOLS & HANDSET CORDS	17
HANDSET CORDS	17
EXTENSION CORDS & LINE CORDS	18
LINE CORDS & TELCO ACCESSORIES	19
TELCO ACCESSORIES & BIX PRODUCTS	20
BIX PRODUCTS	20
TRANSFER KEYS & DSL FILTERS	21
DSL FILTERS & DISTRIBUTION BLOCKS & ENCLOSURE	22
HOW TO TERMINATE A TOOL-LESS KEYSTONE MODULE	23



TEST EQUIPMENT & TOOLS



CABLE COMB

The TSOC #CC-250 Cable Comb is designed to organize Network Cabling during installation and provide a professional appearance.

Part #: **CC-250**

Colours: Yellow/ Blue

Unit of Measure: EA



VDV WIRE MAP

This wire map tester with built in toner is suitable for Voice, Data and Video installations.

Part #: **TP350**

Colours: Yellow

Unit of Measure: EA



TELECOM MOD PLUG CRIMP TOOL

Used to crimp all **TSOC** mod plugs, 4P4C (HANDSET), 6P4C & 6P6C. Has built in wire cutter & stripper for flat ribbon cable.

Part #: **CT-3346**

Colours: Black/Yellow

Unit of Measure: EA



ENHANCED DATACOM MOD PLUG CRIMP TOOL

Used to crimp all **TSOC** mod plugs, 6P4C, 6P6C, 8P8C & 10P10C. Has built in wire cutter & stripper for flat ribbon cable.

Part #: **CT-200**

Colours: Blue

Unit of Measure: EA

Page 4

TOOLS



DATACOM IMPACT TERMINATION TOOL

This high quality handle works in conjunction with a variety of blades to terminate 110, 66 or BIX connectors and blocks.

Part #: **PT-3140**

Part #: **PT-3140N**

Colours: Blue/Grey

Handle Only

Handle with 66 & 110 Blades

Unit of Measure: EA



ENHANCED DATACOM PREP TOOL

Adjustable strip and cut tool for UTP and flat ribbon cable.

Part #: **MST-501B**

Colours: Grey

Unit of Measure: EA



DATACOM PREP & TERMINATION TOOL

This convenient tool is designed to strip and terminate 110 type connectors and blocks in field installations.

Part #: **PT-110**

Colours: Ivory

Unit of Measure: EA



TELECOM 66 TYPE TERMINATION TOOL

Impact termination tool for field installation of 66 type blocks in a central office environment.

Part #: **PTCO-66 (Ref# QTH38B)**

Colours: Ivory

Unit of Measure: EA



MODULAR PLUGS



MODULAR PLUGS

This modular plug accepts 24-26AWG stranded wire.

STRANDED

Part #: **MP-4P4C**

Colours: Clear

SOLID

N/A

Unit of Measure: 100/PKG



MODULAR PLUGS

This modular plug accepts 24-26AWG solid or stranded wire.

STRANDED

Part #: **MP-6P2C**

Part #: **MP-6P4C**

Part #: **MP-6P6C**

Colours: Clear

SOLID

N/A

Part #: **MP-6P4CS**

Part #: **MP-6P6CS**

Unit of Measure: 100/PKG



MODULAR PLUGS

This modular plug accepts 24-26AWG solid or stranded wire.

STRANDED

Part #: **MP-6P6CDEC**

Colours: Clear

SOLID

Part #: **MP-6P6CSDEC**

Unit of Measure: 100/PKG



MODULAR PLUGS

This modular plug accepts 24-26AWG solid or stranded wire.

STRANDED

Part #: **MP-6P6CL**

Colours: Clear

SOLID

Part #: **MP-6P6CSL**

Unit of Measure: 10/PKG

MODULAR LINE CORD



MODULAR LINE CORD

Flat stranded line cord is available in 4 conductors. FT1, 26AWG. (305/ 1000 FT) Reel.

Part #: **TGS-4CSV**

Part #: **TGS-4CBK**

Part #: **TGS-4CWH**

Colours: Silver Satin, White & Black

Unit of Measure: EA



MODULAR LINE CORD

Flat stranded line cord is available in 6 conductors. FT1, 26AWG. (305/ 1000 FT) Reel.

Part #: **TGS-6CSV**

Part #: **TGS-6CBK**

Part #: **TGS-6CWH**

Colours: Silver Satin, Black & White

Unit of Measure: EA



MODULAR LINE CORD

Flat stranded line cord is available in 8 conductors. FT1, 26AWG. (305/ 1000 FT) Reel.

Part #: **TGS-8CSV**

Part #: **TGS-8CBK**

Part #: **TGS-8CWH**

Colours: Silver Satin, Black & White

Unit of Measure: EA



MODULAR LINE CORD

Flat stranded line cord is available in 10 conductors. FT1, 26AWG.(305/ 1000 FT) Reel.

Part #: **TGS-10CSV**

Colours: Silver Satin

Unit of Measure: EA



CONNECTING BLOCKS



TELECOM DISTRIBUTION BLOCK—110

This connecting block equipped with 110 type terminals will take 4 incoming pair and distribute to 12 locations.

Part #: **TMDB-T01BK**

Colours: Black

Unit of Measure: EA



TELECOM DISTRIBUTION BLOCK—SCREW TERMINAL

This connecting block equipped with screw terminals will take 2 incoming pair and distribute to 5 locations.

Part #: **TM305-B4IV**

Colours: Ivory

Unit of Measure: EA



TELECOM DISTRIBUTION BLOCK—66 TYPE

This 6 Pair Connecting Block is designed with 66 Type terminals and will accept 2 incoming pairs and distribute to 5 locations.

Part #: **TM66B4-2C-1**

Colours: Ivory

Unit of Measure: EA



TELECOM DISTRIBUTION BLOCK – 66 TYPE

This 50 Pair Connecting Block is designed with 66 Type terminals and will accept 2 incoming pairs and distribute to 49 locations.

Part #: **TM66B50**

Colours: Ivory

Unit of Measure: EA



BRIDGING CLIP – 66 TYPE

This Bridging Clip is designed for use with the TM66B50 and will duplicate the signal across any pair of 66 Type terminals.

Part #: **TM66B50 –BC**

Colours: N/A

Unit of Measure: 100/PKG

Page 6

DRYWALL BRACKETS & FLUSH MOUNT JACKS



DRYWALL BRACKETS

This post-construction metal bracket allows installation of low voltage wall plates directly on drywall without using a junction box.

Part #: **TMWBF-1CD**

Colours: N/A

Unit of Measure: 10/PKG



DRYWALL BRACKETS

This pre-construction metal bracket allows installation of low voltage wall plates directly behind drywall by attaching to wall stud.

Part #: **TMWBF-2CD**

Colours: N/A

Unit of Measure: EA



DIRECT BURIAL SPLICE

This weather proof engineer grade polymer splice kit will accept RG-59, RG-6, RG-11 or multiple pair 24AWG cable.

Part #: **TM-CSPL1**

Colours: Orange

Unit of Measure: EA



SMOOTH FLUSH MOUNT JACK - SINGLE

This is a one piece smooth finish single 4 or 6 conductor screw terminals flush mount wall plate.

Part #: **TM602-4SIV**

Part #: **TM602-6SIV**

Colours: Ivory & White

TM602-4SWH

TM602-6SWH

Unit of Measure: EA



FLUSH MOUNT JACKS



DECORA FLUSH MOUNT JACK - SINGLE

This is a one piece Decora finish single 4 or 6 conductor screw terminals flush mount wall plate.

Part #: **TM602-4DIV**
Part #: **TM602-6DIV**
Colours: Ivory & White

TM602-4DWH
TM602-6DWH
Unit of Measure: EA



SMOOTH FLUSH MOUNT JACK - DUPLEX

This is a one piece smooth finish duplex 4 or 6 conductor screw terminal flush mount wall plate.

Part #: **TM612-44SIV**
Part #: **TM612-66SIV**
Colours: Ivory & White

TM612-44SWH
TM612-66SWH
Unit of Measure: EA



DECORA FLUSH MOUNT JACK - DUPLEX

This is a one piece Decora finish duplex 4 or 6 conductor screw terminal flush mount wall plate.

Part #: **TM612-44DIV**
Part #: **TM612-66DIV**
Colours: Ivory & White

TM612-44DWH
TM612-66DWH
Unit of Measure: EA



FLUSH MOUNT JACK WITH DOOR

This is a two piece 4 or 6 conductor screw terminal surface mount wall jack with sliding dust proof door.

Part #: **TM602-4NTIV**
Part #: **TM602-6NTIV**
Colours: White & Ivory

TM602-4NTWH
TM602-6NTWH
Unit of Measure: EA

FLUSH MOUNT JACKS



WALL MOUNT JACK

This is a two piece 4 or 6 conductor screw terminal surface mount wall jack with a plastic cover.

Part #: **TM603-4IV**
Part #: **TM603-6IV**
Colours: Ivory & White

TM603-4WH
TM603-6WH
Unit of Measure: EA



UNIVERSAL JACK ASSEMBLY

This is a two piece 4 or 6 conductor screw terminal surface mount wall jack with a metal cover.

Part #: **TM630AC-4M**
Part #: **TM630AC-6M**
Colours: Stainless Steel

Unit of Measure: EA



UNIVERSAL JACK ASSEMBLY

This is a two piece 4 or 6 conductor screw terminal surface mount wall jack with a plastic cover.

Part #: **TM630AC-4IV**
Part #: **TM630AC-4WH**
Colours: Ivory & White

TM630AC-6IV
TM630AC-6WH
Unit of Measure: EA



CONNECTING BLOCK

This one piece hinged connecting block is available in 4, 6 or 8 conductor screw terminals for station wiring.

Part #: **TM41B4IV**
Part #: **TM41B6IV**
Part #: **TM41B8IV**
Colours: Ivory & White

Part #: **TM41B4WH**
Part #: **TM41B6WH**
Part #: **TM41B8WH**
Unit of Measure: EA



SURFACE MOUNT JACKS



SURFACE JACK - SINGLE

This two piece 4 or 6 conductor screw terminal surface mount jack with a removable cover.

Part #: **TM605-4TIV**
 Part #: **TM605-6TIV**
 Colours: Ivory & White
 * Adhesive Tape Included

TM605-4TWH
TM605-6TWH
 Unit of Measure: EA



SURFACE JACK WITH DOOR - SINGLE

This is a two piece 4 or 6 conductor screw terminal surface mount jack with sliding dust proof door.

Part #: **TM605-4NTIV**
 Part #: **TM605-6NTIV**
 Colours: Ivory & White
 * Adhesive Tape Included

TM605-4NTWH
TM605-6NTWH
 Unit of Measure: EA



SURFACE JACK - DUPLEX

This is a two piece 6 conductor screw terminal surface mount jack with removable cover.

Part #: **TM615-66DVIV**
 Colours: Ivory & White
 * Adhesive Tape Included

TM615-66DVWH
 Unit of Measure: EA



MINI SURFACE JACK - DUPLEX

This is a two piece 4 conductor screw terminal surface mount jack with removable cover.

Part #: **TM615-44IV**
 Colours: Ivory & White
 * Adhesive Tape Included

TM615-44WH
 Unit of Measure: EA

SURFACE MOUNT JACKS & ADAPTERS

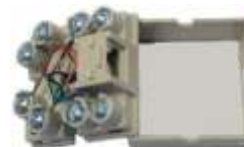


SURFACE JACK ASSEMBLY- SINGLE

This is a two piece 8 conductor USOC RJ45 screw terminal surface mount jack with removable cover. configurations.

Part #: **TM605-8ATIV**
 Colours: Ivory
 * Adhesive Tape Included

Unit of Measure: EA



SURFACE JACK ASSEMBLY- SINGLE

This is a two piece 8 conductor USOC RJ31X screw terminal surface mount jack with removable cover.

Part #: **TM605-8ASTIV**
 Colours: Ivory
 * Adhesive Tape Included

Unit of Measure: EA

IN-LINE COUPLER

This coupler joins any two modular plug ended cables.



CROSS WIRING

Part #: **TM608-4HIV**
 Part #: **TM608-4IV**
 Part #: **TM608-6IV**
 Part #: **TM608-8IV**
 Part #: N/A
 Colours: Ivory

STRAIGHT THROUGH WIRING

N/A	4P4C
N/A	6P4C
TM608-6SIV	6P6C
TM608-8SIV	8P8C
TM608-10SIV	10P10C
Unit of Measure:EA	



T-ADAPTER - 1 MALE to 4 FEMALES

This adapter allows users to take advantage of installed 4-pair to gain access to individual pairs or bridge multiple jacks.

Part #: **TM6094-8PT01BK**
 Part#: **TM6094-8PT01BK2**
 Colours: Black

Unit of Measure: EA



ADAPTERS



DUPLEX CORD COUPLER - 1 FEMALE to 2 FEMALES

All units have 3 female jacks. Useful in daisy chain wiring, parallel phones or answering machines.

Part #: **TM610-4L2IV** 6P4C Splits Line Into L1 & L2
 Part #: **TM610-4IV** 2 x 6P4C
 Part #: **TM610-6IV** 2 x 6P6C
 Colours: Ivory Unit of Measure: EA



T-ADAPTER - 1 MALE to 2 FEMALES

All units have 2 female jacks mating to a male plug. Useful in daisy chain wiring, parallel phones or answering machines.

Part #: **TM609-4L2IV** 6P4C Splits Line Into L1 & L2
 Part #: **TM609-4IV** 2 x 6P4C
 Part #: **TM609-6IV** 2 x 6P6C
 Part #: **TM609-8IV** 2 x 8P8C
 Part #: **TM609-4/8SIV** 6P4C x RJ-31X
 Part #: **TM609-6/4 IV** 6P6C x 6P6C With Loop
 Colours: Ivory Unit of Measure:EA



5 WAY MODULAR ADAPTER

This modular adapter is equipped with a 6FT cord and will distribute 2 pair to 5 locations.

Part #: **TM6095-4PT06IV**
 Colours: Ivory Unit of Measure: EA



HARMONICA

This adapter equipped with a Velcro strap converts a 25 pair trunk cable into six 8P8C modular jacks.

Part #: **HAR-0688FGY** (FEMALE)
 Part #: **HAR-0688MGY** (MALE)
 Colours: Grey Unit of Measure: EA

HARMONICAS & KEYSTONE SURFACE BOXES



HARMONICA

This adapter equipped with a Velcro strap converts a 25 pair trunk cable into eight 6P6C modular jacks.

Part #: **HAR-0866FGY** (FEMALE)
 Part #: **HAR-0866MGY** (MALE)
 Colours: Grey Unit of Measure: EA



HARMONICA

This adapter equipped with a Velcro strap converts a 25 pair trunk cable into twelve 6P4C or 8P4C modular jacks.

Part #: **HAR-1264FGY** (FEMALE)
 Part #: **HAR-1284SFGY** (FEMALE)
 Part #: **HAR-1264MGY** (MALE)
 Part #: **HAR-1284SMGY** (MALE)
 Colours: Grey Unit of Measure: EA



1 PORT KEYSTONE SURFACE BOX

This surface mount box will accept all TM313 & TM314 series **TSOC** keystone modules.

Part #: **TM605-K1IV2**
 Part #: **TM605-K1WH2**
 Colours: Ivory & White Unit of Measure: EA



2 PORT KEYSTONE SURFACE BOX

This surface mount box will accept all TM313 & TM314 series **TSOC** keystone modules.

Part #: **TM605-K2IV2**
 Part #: **TM605-K2WH2**
 Colours: Ivory & White Unit of Measure: EA



KEYSTONE SURFACE BOXES



SURFACE MOUNT SPACER

Used to mount all types of wall plates when additional box space is required.

Part #: **TM221IV**

Part #: **TM221WH**

Colours: Ivory & White

Unit of Measure: EA



SURFACE MOUNT BOX

Used to mount all types of wall plates when additional box space is required.

Part #: **TM625MBIV** (1")

Part #: **TM625MBWH** (1")

Part #: **TM625MBWH2** (1.85")

Colours: Ivory & White

Unit of Measure: EA



SURFACE MOUNTING SPACER

This spacer is used to provide additional space for the TM630AC series universal wall jack.

Part #: **TM630SPWH**

Part #: **TM630SPIV**

Colours: White & Ivory

Unit of Measure: EA



KEYSTONE SURFACE BOX

This surface mount box will accept any **TSOC** keystone bezel and module.

Part #: **TM605-K2BWH**

Colours: White & Ivory

TM605-K2BIV

Unit of Measure: EA

KEYSTONE SURFACE BOXES



KEYSTONE SURFACE BOX

This surface mount box will accept any combination **TSOC** keystone bezel and module.

Part #: **TM605-K4BWH**

Colours: White & Ivory

TM605-K4BIV

Unit of Measure: EA



KEYSTONE SURFACE BOX

This surface mount box will accept any combination **TSOC** keystone bezel and module.

Part #: **TM605-K6BWH**

Colours: White & Ivory

TM605-K6BIV

Unit of Measure: EA



KEYSTONE BEZEL

This 1 port bezel accepts all **TSOC** keystone modules for any combination.

Part #: **TM314-BZ1WH**

Colours: White & Ivory

TM314-BZ1IV

Unit of Measure: EA



KEYSTONE BEZEL

This 2 port bezel accepts all **TSOC** keystone modules for any combination.

Part #: **TM314-BZ2WH**

Colours: White & Ivory

TM314-BZ2IV

Unit of Measure: EA



KEYSTONE SURFACE BOXES & KEYSTONE MODULES



KEYSTONE BEZEL

This blank bezel is installed when no **TSOC** keystone modules is required.

Part #: **TM314-BZBLWH**
Colours: White & Ivory

TM314-BZBLIV
Unit of Measure: EA



DESIGNER KEYSTONE SURFACE BOX

This surface mount box is designed to accept the TM314 series of voice & data keystone modules ONLY.

Part #: **TM605-K12DIV**
Part #: **TM605-K12DWH**
Colours: Ivory & White

Unit of Measure: EA



BLANK KEYSTONE MODULE

This keystone module is used to fill unused ports in any TSOC keystone outlet.

Part #: **TM314-BLNIV-EA**
Part #: **TM314-BLNWH-EA**
Colours: White & Ivory

Unit of Measure: EA



RCA-F KEYSTONE MODULE

This unique keystone module converts an F signal to RCA for home theatre applications.

Part #: **TM314-FRCBL-WH** (Blue)
Part #: **TM314-FRCGN-WH** (Green)
Part #: **TM314-FRCRD-WH** (Red)
Part #: **TM314-FRCWH-WH** (White)
Part #: **TM314-FRCYL-WH** (Yellow)

Colours: White
Insert Colours: Blue, Green, Red, White, Yellow
Unit of Measure: EA

Page 11

KEYSTONE MODULES



AUDIO KEYSTONE MODULE

This binding post module is designed to accept 14-26AWG speaker cable and will fit any TSOC keystone outlet.

Part #: **TM314-BPRD-WH**
Part #: **TM314-BPBK-WH**
Colours: White & Ivory
Insert Colours: Black & Red

TM314-BPRD-IV
TM314-BPBK-IV
Unit of Measure: EA



VIDEO KEYSTONE MODULE

This video module is designed to accept any RG59 or RG6 cable assembly with F connectors and will fit any TSOC keystone outlet.

Part #: **TM314-FWH**
Part #: **TM314-FIV**
Colours: White & Ivory

Unit of Measure: EA



RCA FEED-THROUGH KEYSTONE MODULE

This video module is designed to accept any cable assembly with RCA connectors and will fit any keystone outlet.

Part #: **TM314-RCRD-WHF**
Part #: **TM314-RCYL-WHF**
Part #: **TM314-RCWH-WHF**
Colours: White & Ivory
Insert Colours: Red, Yellow & White

TM314-RCRD-IVF
TM314-RCYL-IVF
TM314-RCWH-IVF
Unit of Measure: EA



SVHS FEED-THROUGH KEYSTONE MODULE

This video module is designed to accept any cable assembly with 4 Pin Mini Din connectors and will fit any TSOC keystone outlet.

Part #: **TM314-MDIV**
Part #: **TM314-MDWH**
Colours: White & Ivory

Unit of Measure: EA



KEYSTONE MODULES & KEYSTONE PATCH PANELS



CAT 3 RJ12 KEYSTONE MODULE (TOOL-LESS)

This 3 pair VOICE module requires no tool for termination and will fit any TSOC keystone outlet.

Part #: **TM313-6C3WH**

Part #: **TM313-6C3BK**

Part #: **TM313-6C3IV**

Colours: White, Black & Ivory

Unit of Measure: EA



CAT 3 RJ12 KEYSTONE MODULE (110)

This 3 pair VOICE module requires a 110 punch down tool for termination and will fit any TSOC keystone outlet.

Part #: **TM314-6C3BK**

Part #: **TM314-6C3WH**

Part #: **TM314-6C3IV**

Colours: White, Black & Ivory

Unit of Measure: EA



12 PORT WALL MOUNTABLE PANEL

This handy wall mountable single hinged panel accepts all **TSOC** keystone modules for any combination.

Part #: **TMPP-HD12BG**

Colours: Beige

Unit of Measure: EA



24 PORT WALL MOUNTABLE PANEL

This handy wall mountable double hinged panel accepts all **TSOC** keystone modules for any combination.

Part #: **TMPP-HD24BG**

Colours: Beige

Unit of Measure: EA

KEYSTONE PATCH PANELS & KEYSTONE WALL PLATES

BLANK KEYSTONE RACK MOUNT PANEL

This 19" rack mount panel accepts all **TSOC** keystone modules for any combination.



Part #: **TMPP-12BK (1U)**

Part #: **TMPP-16BK (1U)**

Part #: **TMPP-24BK (2U)**

Part #: **TMPP-32BK (2U)**

Part #: **TMPP-48BK (3U)**

Part #: **TMPP-16HDBK (1U)**

Part #: **TMPP-24HDBK (1U)**

Part #: **TMPP-48HDBK (2U)**

Colours: Black

Unit of Measure: EA

HINGED WALL MOUNT BRACKETS

This hinged wall mount bracket holds all standard 19" patch panels.



FIXED

Part #: **TMWB-02BK**

Part #: **TMWB-04BK**

Part #: **TMWB-04DBK**

Colours: Black

ADJUSTABLE

Part #: **TMWB-01BKA**

Part #: **TMWB-02BKA**

Part #: **TMWB-04BKA**

Part #: **TMWB-08BKA**

Unit of Measure: EA

Colours: Black



1 PORT SMOOTH KEYSTONE PLATE

This is single gang plastic wall plate smooth finish will accept any **TSOC** keystone module.

Part #: **TM602-K1SIV**

Part #: **TM602-K1SWH**

Colours: Ivory & White

Unit of Measure: EA



2 PORT SMOOTH KEYSTONE PLATE

This is single gang plastic wall plate smooth finish will accept any **TSOC** keystone module.

Part #: **TM602-K2SIV**

Part #: **TM602-K2SWH**

Colours: Ivory & White

Unit of Measure: EA



KEYSTONE WALL PLATES



3 PORT SMOOTH KEYSTONE PLATE

This is single gang plastic wall plate smooth finish will accept any **TSOC** keystone module.

Part #: **TM602-K3SIV**
Part #: **TM602-K3SWH**
Colours: Ivory & White

Unit of Measure: EA



4 PORT SMOOTH KEYSTONE PLATE

This is single gang plastic wall plate smooth finish will accept any **TSOC** keystone module.

Part #: **TM602-K4SIV**
Part #: **TM602-K4SWH**
Colours: Ivory & White

Unit of Measure: EA



6 PORT SMOOTH KEYSTONE PLATE

This is single gang plastic wall plate smooth finish will accept any **TSOC** keystone module.

Part #: **TM602-K6SIV**
Part #: **TM602-K6SWH**
Colours: Ivory & White

Unit of Measure: EA



8 PORT SMOOTH KEYSTONE PLATE

This is dual gang plastic wall plate smooth finish will accept any **TSOC** keystone module.

Part #: **TM602-K8SIV**
Part #: **TM602-K8SWH**
Colours: Ivory & White

Unit of Measure: EA

Page 13

KEYSTONE WALL PLATES



12 PORT SMOOTH KEYSTONE PLATE

This is dual gang plastic wall plate smooth finish will accept any **TSOC** keystone module.

Part #: **TM602-K12SIV**
Part #: **TM602-K12SWH**
Colours: Ivory & White

Unit of Measure: EA



1 PORT DESIGNER KEYSTONE PLATE

This is single gang plastic wall plate designer finish will accept any **TSOC** keystone module. Includes a protective lens over the screws.

Part #: **TM602-K1DIV**
Part #: **TM602-K1DWH**
Colours: Ivory & White

Unit of Measure: EA



2 PORT DESIGNER KEYSTONE PLATE

This is single gang plastic wall plate designer finish will accept any **TSOC** keystone module. Includes a protective lens over the screws.

Part #: **TM602-K2DIV**
Part #: **TM602-K2DWH**
Colours: Ivory & White

Unit of Measure: EA



3 PORT DESIGNER KEYSTONE PLATE

This is single gang plastic wall plate designer finish will accept any **TSOC** keystone module. Includes a protective lens over the screws.

Part #: **TM602-K3DIV**
Part #: **TM602-K3DWH**
Colours: Ivory & White

Unit of Measure: EA



KEYSTONE WALL PLATES



4 PORT DESIGNER KEYSTONE PLATE

This is single gang plastic wall plate designer finish will accept any **TSOC** keystone module. Includes a protective lens over the screws.

Part #: **TM602-K4DIV**

Part #: **TM602-K4DWH**

Colours: White & Ivory

Unit of Measure: EA



6 PORT DESIGNER KEYSTONE PLATE

This is single gang plastic wall plate designer finish will accept any **TSOC** keystone module. Includes a protective lens over the screws.

Part #: **TM602-K6DIV**

Part #: **TM602-K6DWH**

Colours: White & Ivory

Unit of Measure: EA



8 PORT DESIGNER KEYSTONE PLATE

This is dual gang plastic wall plate designer finish will accept any **TSOC** keystone module. Includes a protective lens over the screws.

Part #: **TM602-K8DIV**

Part #: **TM602-K8DWH**

Colours: White & Ivory

Unit of Measure: EA



12 PORT DESIGNER KEYSTONE PLATE

This is dual gang plastic wall plate designer finish will accept any **TSOC** keystone module. Includes a protective lens over the screws.

Part #: **TM602-K12DIV**

Part #: **TM602-K12DWH**

Colours: White & Ivory

Unit of Measure: EA

Page 14

KEYSTONE WALL PLATES



COVER PLATE

Single gang cover plate designed for the Decora strap.

Part #: **TM602-SLWH**

Part #: **TM602-SLIV**

Colours: White & Ivory

Unit of Measure: EA



COVER PLATE

Dual gang cover plate designed for the Decora strap.

Part#: **TM602-DLWH**

Part#: **TM602-DLIV**

Colours: White & Ivory

Unit of Measure: EA



1 & 2 PORT DECORA STRAP

This Decora strap accepts all **TSOC** keystone modules for any combination.

Part #: **TM602-K1LWH**

Part #: **TM602-K2LWH**

Colours: White & Ivory

Part #: **TM602-K1LIV**

Part #: **TM602-K2LIV**

Unit of Measure: EA



3 PORT DECORA STRAP

This Decora strap accepts all **TSOC** keystone modules for any combination.

Part #: **TM602-K3LWH**

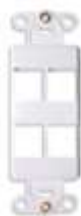
Part #: **TM602-K3LIV**

Colours: White & Ivory

Unit of Measure: EA



KEYSTONE WALL PLATES



4 PORT DECORA STRAP

This Decora strap accepts all **TSOC** keystone modules for any combination.

Part #: **TM602-K4LWH**

Part #: **TM602-K4LIV**

Colours: White & Ivory

Unit of Measure: EA



6 PORT DECORA STRAP

This Decora strap accepts all **TSOC** keystone modules for any combination.

Part #: **TM602-K6LWH**

Part #: **TM602-K6LIV**

Colours: White & Ivory

Unit of Measure: EA



1 PORT KEYSTONE WALL PLATE

This single gang stainless steel wall plate accepts all **TSOC** keystone modules.

Part #: **TM602-K1M**

Colours: Stainless Steel

Unit of Measure: EA



2 PORT KEYSTONE WALL PLATE

This single gang stainless steel wall plate accepts all **TSOC** keystone modules.

Part #: **TM602-K2M**

Colours: Stainless Steel

Unit of Measure: EA

STAINLESS STEEL KEYSTONE WALL PLATES



3 PORT KEYSTONE WALL PLATE

This single gang stainless steel wall plate accepts all **TSOC** keystone modules.

Part #: **TM602-K3M**

Colours: Stainless Steel

Unit of Measure: EA



4 PORT KEYSTONE WALL PLATE

This single gang stainless steel wall plate accepts all **TSOC** keystone modules.

Part #: **TM602-K4M**

Colours: Stainless Steel

Unit of Measure: EA



8 PORT KEYSTONE WALL PLATE

This dual gang stainless steel wall plate accepts all **TSOC** keystone modules.

Part #: **TM602-K8M**

Colours: Stainless Steel

Unit of Measure: EA



1 PORT WALL PHONE KEYSTONE PLATE

This single gang plastic wall plate will accept all **TSOC** keystone modules to mount any analogue, digital or VOIP telephone.

Part #: **TM630-K1SWHHK**

Part #: **TM630-K1SIVHK**

Colours: White & Ivory

Unit of Measure: EA



SPLICE CONNECTORS & WEATHERPROOF OUTLETS



SEALANT FILLED SPLICE CONNECTOR—RED

The three barrel splice connector is sealant filled to provide moisture resistance and will accept 19-26 AWG conductors.

Part #: **TMUR-01 (3M #) (80-6111-5059-2)**

Colours: Red/Clear

Unit of Measure: 100/PKG



SEALANT FILLED SPLICE CONNECTOR—YELLOW

The two barrel splice connector is sealant filled to provide moisture resistance and will accept 22-26 AWG conductors.

Part #: **TMUY-01 (3M #) (80-6111-5072-5)**

Colours: Yellow/Clear

Unit of Measure: 100/PKG



SEALANT FILLED SPLICE CONNECTOR—BLUE

The two barrel splice connector is sealant filled to provide moisture resistance. The unique design allows tapping into an existing 22-26AWG conductors.

Part# **TMUB-01 (3M #)**

Available in: Blue / Clear

Unit of Measure: 100/PKG



SINGLE SURFACE WEATHERPROOF OUTLET

This composite metal surface outlet is designed to accept any one keystone RJ11 module for installation in an outdoor environment.

Part #: **TM605ODM-4GY**

Colours: Grey

Unit of Measure: EA

WEATHERPROOF OUTLETS & B-WIRE CONNECTORS



SINGLE FLUSH WEATHERPROOF OUTLET

This plastic flush outlet is designed with one RJ11 connector with a lockable door for installation in an outdoor environment.

Part #: **TM602ODP-4GY**

Colours: Grey

Unit of Measure: EA



SINGLE FLUSH WEATHERPROOF OUTLET

This composite metal flush outlet is designed to accept any one keystone RJ11 module for installation in an outdoor environment.

Part #: **TM602ODM-4SV**

Colours: Grey

Unit of Measure: EA



PLAIN B-WIRE SPLICE CONNECTOR—WHITE

This basic self-piercing splice connector will accept multiple 19-26 AWG conductors.

Part #: **TMBC-01** (100/ PKG)

Part#: **TMBC-01-1000** (1000/ PKG)

Colours: White

Unit of Measure: PKG



SEALANT FILLED B-WIRE SPLICE CONNECTOR—BLUE

This self-piercing splice connector is sealant filled to provide moisture resistance and will accept 19-26 AWG conductors.

Part #: **TMBC-02** (100/ PKG)

Part #: **TMBC-02-1000** (1000/ PKG)

Colours: Blue

Unit of Measure: PKG



CRIMP TOOLS



TELECOM SPLICE CRIMP TOOL

This tool is designed to crimp all **TSOC** TMUX-01 series splice connectors.

Part #: **CT-SPL1**

Colours: Black

Unit of Measure: EA



B CONNECTOR CRIMP TOOL

This tool is designed to crimp all **TSOC** TMBC-XX series splice connectors.

Part #: **CT-303**

Colours: Black

Unit of Measure: EA



CORD KITS

This combination cord kit is equipped with a standard 9FT coil cord (4C) + 7FT line cord (2C) with modular connectors. For use with any Analogue, Digital or VOIP telephone.

Part #: **CORDKIT-***

Colours: (See Chart)

Unit of Measure: EA



COIL CORDS

This flat coiled cord with RJ22 modular connectors is designed for use with any Analogue, PBX or VOIP Telephone Handset.

Part #: **MC4-09MM****

(9FT)

Part #: **MC4-15MM****

(15FT)

Part #: **MC4-25MM****

(25FT)

Colours: (See Chart)

Unit of Measure: EA

HANDSET CORDS



COIL CORDS

This round coil cord with spaded tips is designed for use with any vintage 2500 & 3500 type telephones.

Part #: **MCR4-07SS****

(7FT)

Part #: **MCR4-15SS****

(15FT)

Part #: **MCR4-25SS****

(25FT)

Colours: (See Chart Below)

Unit of Measure: EA

HANDSET CORD REFERENCE CHART

01 DOLPHIN GREY	02 ALMOND	03 BRIGHT WHITE
04 BEIGE	05 WARM WHITE	06 BANDAGE PINK
07 ASH	08 IVORY	09 BLACK
10 COCO BROWN	11A DEEP RED	12 CHARCOAL
13 HARMONY BLUE	14 PLATINUM GREY	15 DARK GREY
16 CHAMELEON GREY	17 MATTE BLACK	18 ETHER GREY

Nortel Colours HIGHLIGHTED



EXTENSION CORDS - SINGLE

This flat 4 conductor extension cord is equipped with a single modular female jack and male plug.

Part #: **EC4-15MFSV**

(15FT)

Part #: **EC4-25MFSV**

(25FT)

Colours: Silver Satin

Unit of Measure: EA



EXTENSION CORDS - SINGLE

This flat 6 conductor extension cord is equipped with a single modular female jack and male plug.

Part #: **EC6-15MFSV**

(15FT)

Part #: **EC6-25MFSV**

(25FT)

Colours: Silver Satin

Unit of Measure: EA



EXTENSION CORDS



EXTENSION CORDS - SINGLE

This flat 8 conductor extension cord is equipped with a single modular female jack and male plug.

Part #: **EC8-15MFSV** (15FT)
 Part #: **EC8-25MFSV** (25FT)
 Colours: Silver Satin Unit of Measure: EA



EXTENSION CORDS - DUPLEX

This flat 4 conductor extension cord is equipped with a duplex modular female jack and male plug.

Part #: **EC4-15M2FSV** (15FT)
 Part #: **EC4-25M2FSV** (25FT)
 Colours: Silver Satin Unit of Measure: EA



EXTENSION CORDS - DUPLEX

This flat 6 conductor extension cord is equipped with a duplex modular female jack and male plug.

Part #: **EC6-15M2FSV** (15FT)
 Part #: **EC6-25M2FSV** (25FT)
 Colours: Silver Satin Unit of Measure: EA



EXTENSION CORDS - DUPLEX

This flat 8 conductor extension cord is equipped with a duplex modular female jack and male plug.

Part #: **EC8-15M2FSV** (15FT)
 Part #: **EC8-25M2FSV** (25FT)
 Colours: Silver Satin Unit of Measure: EA

LINE CORDS



LINE CORDS - FULLY MODULAR

This flat 2 conductor line cord is equipped with a modular plug on both ends. Enquire about custom lengths or colours.

Part #: **ML2-07MMSV** (7FT)
 Part #: **ML2-15MMSV** (15FT)
 Part #: **ML2-25MMSV** (25FT)
 Colours: Silver Satin Unit of Measure: EA



LINE CORDS - FULLY MODULAR

This flat 4 conductor line cord is equipped with a modular plug on both ends. Enquire about custom lengths or colours.

Part #: **ML4-01MMSV** (1FT) **ML4-07MMSV** (7FT)
 Part #: **ML4-02MMSV** (2FT) **ML4-15MMSV** (15FT)
 Part #: **ML4-03MMSV** (3FT) **ML4-25MMSV** (25FT)
 Colours: Silver Satin Unit of Measure: EA



LINE CORDS - FULLY MODULAR

This flat 6 conductor line cord is equipped with a modular plug on both ends. Enquire about custom lengths or colours.

Part #: **ML6-07MMSV** (7FT)
 Part #: **ML6-15MMSV** (15FT)
 Part #: **ML6-25MMSV** (25FT)
 Colours: Silver Satin Unit of Measure: EA



LINE CORDS - FULLY MODULAR

This flat 8 conductor line cord is equipped with a modular plug on both ends. Enquire about custom lengths or colours.

Part #: **ML8-07MMSV** (7FT)
 Part #: **ML8-15MMSV** (15FT)
 Part #: **ML8-25MMSV** (25FT)
 Colours: Silver Satin Unit of Measure: EA



LINE CORDS



LINE CORDS - MOD/SPADE

This flat 4 conductor line cord is equipped with a modular plug and spade tips for hard wiring. Enquire about custom lengths.

Part #: ML4-01MSSV (1FT)	ML4-15MSSV (15FT)
Part #: ML4-02MSSV (2FT)	ML4-25MSSV (25FT)
Part #: ML4-07MSSV (7FT)	
Colours: Silver Satin	Unit of Measure: EA



LINE CORDS - MOD/SPADE

This flat 6 conductor line cord is equipped with a modular plug and spade tips for hard wiring. Enquire about custom lengths.

Part #: ML6-07MSSV	(7FT)
Part #: ML6-15MSSV	(15FT)
Part #: ML6-25MSSV	(25FT)
Colours: Silver Satin	Unit of Measure: EA



LINE CORDS - QUARTER MODULAR

This flat 8 conductor line cord is equipped with a modular plug and spade tips for hard wiring. Enquire about custom lengths.

Part #: MLR8-02MSSV	(2FT)
Part #: MLR8-07MSSV	(7FT)
Colours: Silver Satin	Unit of Measure: EA



25 PAIR MODULAR ADAPTER

This cabling adapter connects existing 25-pair cabling to a 4, 6 or 8 position modular female jack.

Part #: TM153-AM04GY	(MALE)
Part #: TM153-AM06GY	(MALE)
Part #: TM153-AM08GY	(MALE)
Colours: Grey	Unit of Measure: EA



VELCRO STRAP

This unique Velcro strap is used to secure either Metal or Plastic Telco connectors to frames or panels.

Part #: TMVS-M1BK	
Colours: Black	Unit of Measure: EA

LINE CORDS & TELCO ACCESSORIES



25 PAIR CONNECTORIZED CABLES

This 25 pair CAT 3 cable assembly is terminated with an optional RJ71 Male or Female Telco connector and a BIX

Part #: TELCOF-BX1A6	(FEMALE)
Part #: TELCOM-BX1A6	(MALE)
Colours: Grey	Unit of Measure: EA
* Custom lengths available	



25 PAIR CONNECTORIZED CABLES

This 25 pair CAT 3 cable assembly is terminated with an optional RJ71 Male or Female Telco connector on each end.

Part #: AAP-15-FF (15FT)	AAP-15-MM
Part #: AAP-30-FF (30FT)	AAP-30-MM
Colours: Grey	Unit of Measure: EA
*Custom lengths & configurations available	



METAL TELCO CONNECTOR (IDC TYPE)

This Metal 50 pin RJ71 Male or Female Telco connector is complete with hood and hardware.

Part #: TM-25FM	(FEMALE)
Part #: TM-25MM	(MALE)
Colours: Stainless Steel	Unit of Measure: EA



PLASTIC TELCO CONNECTOR (IDC TYPE)

This Plastic 50 pin RJ71 Male or Female Telco connector is complete with hood and hardware.

Part #: TM-25FPBK	(FEMALE)
Part #: TM-25MPBK	(MALE)
Colours: Black	Unit of Measure: EA



PLASTIC HOOD (180°)

This 180° hood is compatible with the TM25FPBK and TM25MPBK Telco Connector.

Part #: TM-25PH180BK	
Colours: Black	Unit of Measure: EA



TELCO ACCESSORIES



50 PAIR DISTRIBUTION MOUNT

This frame accepts any BIX distribution connector and is used in small cross-connect installations.

Part #: **TMBX-2POSN (QMBIX10C)**

Colours: Beige

Unit of Measure: EA



100 PAIR DISTRIBUTION MOUNT

This frame accepts any BIX distribution connector and is used in mid size cross-connect installations.

Part #: **TMBX-4POSN**

Colours: Beige

Unit of Measure: EA



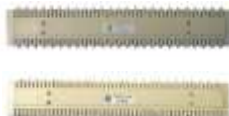
250 PAIR DISTRIBUTION MOUNT

This frame accepts any BIX distribution connector and is used in larger cross-connect installations.

Part #: **TMBX-10POSN (QMBIX10A)**

Colours: Beige

Unit of Measure: EA



25 PAIR DISTRIBUTION CONNECTOR

The BIX Distribution Connector allows 25 pairs of insulated wire 22-26AWG to be terminated in a cross connect or demarcation point. Each connector is clear marked with a 4 pair marking for DATA or 5 pair marking for VOICE cabling.

Part #: **TMBX-1A (QCBIX1A)**

5Pr Markings

Part #: **TMBX-1A4 (QCBIX1A4)**

4Pr Markings

Colours: Beige

Unit of Measure: EA

Page 20

BIX PRODUCTS



12 PORT MODULAR DISTRIBUTION CONNECTOR

This BIX connector is prewired with 12 Modular Jacks RJ11 CAT 3 (USOC) wiring is designed to be used as a mini patch panel and be installed in any BIX distribution mount.

Part #: **TMBX-36B (A0330863)**

Colours: Beige

Unit of Measure: EA



6 PORT MODULAR DISTRIBUTION CONNECTOR

This BIX connector is prewired with 6 Modular Jacks RJ45 CAT 5E (568A/B) wiring is designed to be used as a mini patch panel and be installed in any BIX distribution mount.

Part #: **TMBX-46DI (AX100798)**

Colours: Beige

Unit of Measure: EA



DESIGNATION LABELS

These self adhesive BIX labels are available in a variety of colours with clearly identified 4 pair and 5 pair markings.

Part #: **TMBX-DLBL-EA**

TMBX-DLWH-EA

Part #: **TMBX-DLRD-EA**

TMBX-DLGN-EA

Part #: **TMBX-DLYL-EA**

TMBX-DLGY-EA

Part #: **TMBX-DLOR-EA**

TMBX-DLBR-EA

Part #: **TMBX-DLPR-EA**

Unit of Measure: EA



DESIGNATION STRIP

These designation strips snap fit between the BIX Distribution connector upon installation with all Mounts. The self adhesive Designation Labels are then applied to identify the cabling.

Part #: **TMBX-DSWH-EA (QSBIX20A)**

Colours: White

Unit of Measure: EA



BIX PRODUCTS & DSL FILTERS



QUICK TEST PROBE

This convenient single pair probe clips onto the 25 pair BIX distribution connector to ease in testing.

Part #: **PTBX-17A (QTBI17A)**

Colours: Red/Black

Unit of Measure: EA



IMPACT TERMINATION TOOL

This impact termination tool is used for field installation of the BIX distribution connector. The tool is adjustable to allow for the cutting feature to be turned on/off.

Part #: **PTBX-16A-BL (QTBI16A)**

Colours: Beige

Unit of Measure: EA



INLINE DSL LINE FILTER

This inline filter connects between the wall jack and device.

Part #: **TM608-DSL31XW (RJ31X)**

Part #: **TM608-DSLIV (RJ11)**

Colours: Ivory

Unit of Measure: EA



DSL LINE FILTER (RJ11)

This inline filter connect between the wall and splits the signal between two devices. One port is filtered and one port is unfiltered.

Part #: **TM609-4DSL1IV**

Part #: **TM609-4DSL2IV**

Colours: Ivory

Unit of Measure: EA

DSL FILTERS & STATION PROTECTORS



DSL POTS SPLITTER

This DSL POTS splitter is designed for indoor installation and splits the Voice and Data signals on the Telephone Line and provide separate outputs.

Part # **80-410V-11 (RJ11)**

Part# **80-410V-45 (RJ45)**

Colours: Grey

Unit of Measure: EA



WALL MOUNT DSL LINE FILTER (RJ11)

This wall mount jack allows for installation of a telephone and provides 2 filtered and 1 unfiltered outlets.

Part #: **TM630-DSLIV2**

Colours: Ivory

Unit of Measure: EA



RJ11 PLUG LOCK

This RJ11 Modular Plug Lock is designed to prevent tampering or disconnection of any Telephone connection.

Part #: **ML-RJ11LK**

Colours: Black

Unit of Measure: 10/ PKG



RJ22 PLUG LOCK

This RJ22 Modular Plug Lock is designed to prevent tampering or disconnection of any Telephone Handset or Headset connection.

Part #: **ML-RJ22LK**

Colours: Clear

Unit of Measure: 10/ PKG



DSL FILTERS & DISTRIBUTION BLOCKS



BASIC STATION PROTECTOR

This one pair station protector is designed for outdoor applications and provides protection from Lightning and Power Surges.

Part #: **326-1L**

Colours: Grey

Unit of Measure: EA



DSL STATION PROTECTOR W/ DEMARCATION JACK

This DSL compliant station protector is equipped with an RJ11 connector and provides protection from Lightning and Power Surges.

Part #: **356-11-00**

Colours: Grey

Unit of Measure: EA



CROSS CONNECT BLOCK

This 10 Pair Cross connect block allows for splice of 10 single pairs.

Part #: **65E-10**

Colours: Grey

Unit of Measure: EA

DISTRIBUTION BLOCKS & ENCLOSURE



DISTRIBUTION BLOCK

This wire distribution block is equipped with test points and designed to multiply telephone wiring pairs in parallel.

Part #: **69T1 (1 IN – 5 OUT)**

Part #: **69T2 (2 IN – 4 OUT)**

Colours: Grey

Unit of Measure: EA



DISTRIBUTION BLOCK

This wire distribution block is equipped with test points and designed to multiply telephone wiring pairs in parallel.

Part #: **68T-1 (1 IN – 11 OUT)**

Part #: **68T-2 (2 IN – 10 OUT)**

Colours: Grey

Unit of Measure: EA



LARGE ENCLOSURE

This weatherproof enclosure is designed to accommodate the 68T1 and 68T2 wire distribution blocks.

Part #: **169-0**

Colours: Grey

Unit of Measure: EA



HOW TO TERMINATE A TOOL-LESS KEYSTONE MODULE

MATERIALS REQUIRED:

MST-501 (1) Adjustable Cut & Strip Tool
TM313-8C5EBL (2) Tool-Less Keystone RJ-45 Module
FT4-4PC5EBL (1) Solid 24AWG Wire UTP 4 Pair Cat 5E
TP350 (1) Wire Map Tester

Step 1:

Cut the specified length of UTP wire required using the cut blades equipped with the Adjustable Strip Tool.

Step 2:

Strip away 3" of the jacket using the strip blades equipped with the Adjustable Strip Tool exposing the insulated UTP conductors. Using the RIP cord strip and additional 3" of jacket.

Step 3:

Use your thumb and index finger to straighten each pair placing them in the desired wiring configuration. Place a pencil between each pair to help untwist the pairs.

Step 4:

Hold the cable firmly using your thumb and index finger at the base of the cable. Cut the insulated conductors at a 90 degree angle 3/4" from the edge of the jacket using the Adjusting Cut & Strip Tool.

Step 5:

Remove the locking clip and open the hinged door of the Tool-Less Keystone RJ-45 Module. Carefully insert 1 pair at a time into the cavity on a 45 degree angle until the tip of the wires reach the IDC contacts inside the connector. Close the hinged door to terminate each pair.

Step 6:

Repeat Step 5 one pair at a time from left to right until all 4 pairs are terminated and then replace the locking clip.

Step 7:

Verify the terminated cable assembly by inserting a test patch cord into both ends of the cable assembly and the other ends into the Tester and Remote unit of the Tester.

Step 8:

Insert Module into designated work station wall plate, surface box or patch panel plate.

Step 9:

Document the results and label the cable with a Inventory Number and Production Code for future reference.



Tool-less
TM313-8C5EBL



FEATURED PRODUCT

Name: Tool-Less Demarcation Block
TSOC #68T-2 (Pg. 22)



Reduce installation time and maintenance with the sealant filled tool-less demarcation block



Data Networking Solutions



DATA PRODUCTS

- Test Equipment
- Patch Cords
- Home Networking Modules
- Patch Panels
- Keystone Modules
- Keystone Plates & Boxes
- D-Sub Connectors
- Tools
- Mod Adapters
- Gender Changers

TEST EQUIPMENT & TOOLS	26
TOOLS, VELCRO & BULK UTP CABLE	27
STRANDED CABLES, ETHERNET PATCH CABLES & LOCKS	28
LOCKS & MODULAR PLUGS	29
HARMONICAS & SNAGLESS BOOTS	30
HOME NETWORKING PRODUCTS	31
PATCH PANELS	32
WALL MOUNT BRACKETS	33
KEYSTONE WALL PLATES	34
COUPLERS	36
KEYSTONE SURFACE BOXES	37
KEYSTONE MODULES	38
DB09, DB15 & DB25 CONNECTORS	40
D-SUB HOODS	40
MOD ADAPTER KITS	41
GENDER CHANGERS	41
PORT SAVERS	42
ADAPTERS & WEATHERPROOF OUTLETS	42
WIRING CONFIGURATIONS	43



TEST EQUIPMENT & TOOLS



CABLE COMB

The TSOC #CC-250 Cable Comb is designed to organize Network Cabling during installation and provide a professional appearance.

Part #: **CC-250**

Colours: Yellow/ Blue

Unit of Measure: EA



VDV WIRE MAP

This wire map tester with built in toner is suitable for Voice, Data and Video installations.

Part #: **TP350**

Colours: Yellow

Unit of Measure: EA



COAX CABLE PREP TOOL

Adjustable strip tool for RG59 and RG6 coaxial cable.

Part #: **MST-332**

Colours: Grey

Unit of Measure: EA



TELECOM PREP TOOL

Cut and strip tool for flat ribbon cable.

Part #: **MST-502**

Colours: Yellow

Unit of Measure: EA

TOOLS



ENHANCED DATACOM PREP TOOL

Adjustable strip and cut tool for UTP and flat ribbon cable.

Part #: **MST-501B**

Colours: Grey

Unit of Measure: EA



DATACOM MOD PLUG CRIMP TOOL

Used to crimp all **TSOC** mod plugs, 6P4C, 6P6C & 8P8C. Has built in wire cutter & stripper for flat ribbon cable.

Part #: **CT-3368**

Colours: Black

Unit of Measure: EA



ENHANCED DATACOM MOD PLUG CRIMP TOOL

Used to crimp all **TSOC** mod plugs, 6P4C, 6P6C, 8P8C & 10P10C. Has built in wire cutter & stripper for flat ribbon cable.

Part #: **CT-200**

Colours: Blue

Unit of Measure: EA



D-SUB CRIMP TOOL

Used to crimp the male pins and female sockets used with **TSOC** D-sub connectors.

Part #: **CT-DSUB2**

Colours: Black

Unit of Measure: EA



RAPID JACK TOOL

Reduce installation time by terminating all 4 pair cable at once with the Rapid Jack Tool

Part #: **CT-RJ314-8**

Colours: Black

Unit of Measure: EA



TOOLS & VELCRO



D-SUB INSERT/EXTRACTION TOOL

Insertion and removal tools for crimp type D-Sub connectors.

Part #: **TM-IETOO**

Colours: Red/White

Unit of Measure: EA



DATACOM IMPACT TERMINATION TOOL

This high quality handle works in conjunction with a variety of blades to terminate 110, 66 or BIX connectors and blocks.

Part #: **PT-3140**

Part #: **PT-3140N**

Colours: Blue/Grey

Handle Only

Handle with 66 & 110 Blades

Unit of Measure: EA



DATACOM PREP & TERMINATION TOOL

This convenient tool is designed to strip UTP cable and terminate 110 type connectors and blocks in field installations.

Part #: **PT-110**

Colours: Ivory

Unit of Measure: EA



KEYSTONE TERMINATION PUCK - 110 TYPE

This Keystone Termination Puck is designed to securely hold any TSOC Voice or Data 110-Type keystone module during termination.

Part #: **TM314-BASEBK2**

Colours: Black

Unit of Measure: EA

VELCRO & BULK UTP CABLE



CONTINUOUS HOOK AND LOOP CABLE

Bundle and secure cables using Velcro cable ties available in 75 ft continuous roll

Part #: **TV-1/275BK** (1/2")

Part #: **TV-3/475BK** (3/4")

Part #: **TV-175BK** (1")

Colours: Black

Unit of Measure: EA



VELCRO CABLE TIES

Bundle and secure cables using Velcro cable ties available in several colours and 3 standard lengths.

Part #: **TV-8**** (8")

Part #: **TV-12**** (12")

Part #: **TV-18**** (18")

Colours: Please Enquire

Unit of Measure: 10/ PKG

**= Colour



UTP SOLID RISER CABLE

This CMR rated 24AWG solid unshielded CAT 5E cable is designed for horizontal cabling installation and is available in (305m/1000FT) box.

Part #: **FT4-4PC5EBLSL2**

Part #: **FT4-4PC5EWHSL2**

Colours: Please Enquire

Unit of Measure: EA



UTP SOLID PLENUM CABLE

This CMP rated 24AWG solid unshielded CAT 5E cable is designed for horizontal cabling installation and is available in (305m/1000FT) box.

Part #: **FT6-4PC5EBLSL2**

Part #: **FT6-4PC5EWHSL2**

Colours: Please Enquire

Unit of Measure: EA



STRANDED CABLES & ETHERNET PATCH CABLES



UTP STRANDED CABLE

This CM rated 24AWG stranded unshielded CAT 5E & CAT 6 cable is designed for patch cable production and is available in (305m/1000FT) box.

Part #: **TGS-8CRC5E****

Part #: **TGS-8CRC6****

Colours: Please Enquire

**= Colour

Unit of Measure: EA



STP STRANDED CABLE

This CM rated 24AWG stranded shielded CAT 5E & CAT 6 cable is designed for patch cable production and is available in (305m/1000FT) box.

Part #: **TGS-8CRC5ESHGY**

Part #: **TGS-8CRC6SHGY**

Colours: Please Enquire

Unit of Measure: EA



MOLDED CAT 5E PATCH CABLES

This stranded UTP CAT 5E rated patch cable assembly is equipped with RJ45 connectors and snagless boots.

Part #: **LML8-**MMC5EGY**

Part #: **LML8-**MMC5EBL**

Part #: **LML8-**MMC5EXRD (RED CROSSOVER CABLE)**

Colours: PLEASE ENQUIRE

Lengths: PLEASE ENQUIRE

**= Length

Unit of Measure: EA



MOLDED CAT 6 PATCH CABLES

This stranded UTP CAT 6 rated patch cable assembly is equipped with RJ45 connectors and snagless boots.

Part #: **LML8-**MMC6BL**

Part #: **LML8-**MMC6GY**

Part #: **LML8-**MMC6XRD (RED CROSSOVER CABLE)**

Colours: PLEASE ENQUIRE Unit of Measure: EA

Lengths: PLEASE ENQUIRE

**= Length



HIGH DENSITY CAT 5E PATCH CABLES

This stranded UTP CAT 5E rated patch cable assembly is equipped with unique snagless RJ45 connectors and strain relief.

Part #: **ML8-**MMC5EBL**

Part #: **ML8-**MMC5EGY**

Part #: **ML8-**MMC5EXRD (RED CROSSOVER CABLE)**

Colours: PLEASE ENQUIRE Unit of Measure: EA

Lengths: PLEASE ENQUIRE

**= Length



HIGH DENSITY CAT 6 PATCH CABLES

This stranded UTP CAT 6 rated patch cable assembly is equipped with unique snagless RJ45 connectors and strain reliefs.

Part #: **ML8-**MMC6BL**

Part #: **ML8-**MMC6GY**

Part #: **ML8-**MMC6XRD (RED CROSSOVER CABLE)**

Standard Colours: PLEASE ENQUIRE Unit of Measure: EA

Lengths: PLEASE ENQUIRE

** = Length



LOCKS



RJ45 PORT LOCK

This RJ45 Port Lock is designed to block any Ethernet port using a Hex or T10 Torx key.

Part #: **MJ-RJ45LKBK**

Part #: **MJ-RJ45LKGY**

Colours: Black & Grey

Unit of Measure: EA



RJ45 LOCKING SLEEVE

Locking device for **TSOC** #MP-8P8C mod plug.

Part #: **MP-RJ45LKBK**

Colours: Black

Unit of Measure: EA



RJ45 PLUG PROTECTOR

This RJ45 Modular Plug Protector can be used to protect any Ethernet Patch Cable.

Part #: **MP-RJ45CVBK**

Colours: Black

Unit of Measure: 10/ PKG



RJ45 PORT PROTECTOR

This RJ45 Port Protector can be used to protect any Ethernet Outlet.

Part #: **MJ-RJ45CVBK**

Colours: Black

Unit of Measure: 10/ PKG



RJ45 PLUG LOCK

This RJ45 Modular Plug Lock is designed to prevent tampering or disconnection of any Ethernet connection.

Part #: **ML-RJ45LK**

Colours: Blue

Unit of Measure: 10/ PKG

Page 29



LOCKS & MODULAR PLUGS



LOCKING PATCH CABLE

This stranded UTP CAT 5E or CAT 6 rated patch cable assembly is equipped with RJ45 connectors and a Locking Sleeves.

Part #: **ML8-**MMC5EBK-LK2 (CAT5E)**

Part #: **ML8-**MMC6BK-LK2 (CAT6)**

Colours: PLEASE ENQUIRE

Unit of Measure: EA

Lengths: PLEASE ENQUIRE

** Substitute length required for part number



MODULAR PLUG

RJ-45 Male crimp connector for 24-28 AWG solid and stranded cable.

STRANDED

Part #: **MP-8P8C**

Part #: **MP-8P8CK (keyed)**

Part #: **MP-10P10C**

Part #: **N/A**

Part #: **N/A**

SOLID

MP-8P8CS (50/ PKG)

N/A (50/ PKG)

MP-10P10CS (10/PKG)

MP-8P8C6S (CAT 6) (50/ PKG)

MP-8P8C6S2 (CAT 6) (50/ PKG)

Colours: Clear

Unit of Measure: PKG



SNAGLESS MODULAR PLUG

RJ-45 Male crimp connector for 24-28 AWG solid and stranded cable.

STRANDED

Part #: **MP-8P8CSN**

Part #: **MP-8P8C6SN2**

Colours: Clear

SOLID

MP-8P8CSSN

MP-8P8C6SSN (CAT)

Unit of Measure: 50/ PKG



SNAGLESS MODULAR PLUG

RJ-45 Male Crimp connector for 24-28 AWG solid and stranded cable.

STRANDED

Part #: **N/A**

Part #: **N/A**

Colours: Clear

SOLID

MP-8P8CS-EZ

MP-8P8C6S-EZ

Unit of Measure: 50/ PKG

MODULAR PLUGS



SHIELDED MODULAR PLUG

RJ-45 Male crimp connector for 24-28 AWG solid and stranded cable.

STRANDED

Part #: N/A

Part #: N/A

Colours: Clear

SOLID

MP-8P8CSH

MP-8P8CSSH

Unit of Measure: 10/ PKG



IP-67 RATED MODULAR PLUG

RJ-45 field termination male crimp connector kit for 24-28AWG solid cable for Industrial Ethernet applications.

Part #: **MP-RJ45IPKBK**

Colours: Black

Unit of Measure: EA



HARMONICA

This adapter equipped with a Velcro strap converts a 25 pair trunk cable into six 8P8C modular jacks.

Part #: **HAR-0688FGY**

Part #: **HAR-0688MGY**

Colours: Grey

(FEMALE)

(MALE)

Unit of Measure: EA

HARMONICAS & SNAGLESS BOOTS



HARMONICA

This adapter equipped with a Velcro strap converts a 25 pair trunk cable into eight 6P6C modular jacks.

Part #: **HAR-0866FGY**

Part #: **HAR-0866MGY**

Colours: Grey

(FEMALE)

(MALE)

Unit of Measure: EA



HARMONICA

This adapter equipped with a Velcro strap converts a 25 pair trunk cable into twelve 6P4C or 8P4C modular jacks.

Part #: **HAR-1264FGY**

Part #: **HAR-1284SFGY**

Part #: **HAR-1264MGY**

Part #: **HAR-1284SMGY**

Colours: Grey

(FEMALE)

(FEMALE)

(MALE)

(MALE)

Unit of Measure: EA



SNAGLESS BOOT FOR RJ45 PLUGS

The one piece boot is installed during cable assembly and will protect the **TSOC** #MP-8P8C mod plug connector tab.

Part #: **TMRBU2****

Colours: Please Enquire

Unit of Measure: 25/ PKG



SNAGLESS BOOT FOR RJ45 PLUGS

The two piece boot can be installed after patch cable assembly to protect the **TSOC** #MP-8P8C mod plug connector tab.

Part #: **TMRBU3****

Colours: Please enquire

Unit of Measure: 25/ PKG



HOME NETWORKING PRODUCTS



STRAIN RELIEF FOR RJ45 PLUGS

The one piece strain relief is installed during cable assembly and will prevent maximum bend at the cable entry point.

Part #: **TMRBU1CL**

Colours: Clear

Unit of Measure: 25/ PKG



SMALL HOME NETWORK ENCLOSURE

This cabinet will accept any TSOC distribution module and is equipped with a locking door.

Dimensions: 10.24"H x 6.69"W x 3.35"D

Part #: **TMHNC-01BK**

Colours: Black

Unit of Measure: EA



LARGE HOME NETWORK ENCLOSURE

This cabinet will accept any TSOC distribution module and is equipped with a locking door.

Dimensions: 18.9"H x 14.49"W x 4.33"D

Part #: **TMHNC-02BK**

Colours: Black

Unit of Measure: EA



TELEPHONE & VIDEO DISTRIBUTION MODULE

This combination telephone and video distribution module with power supply is equipped with an RJ31X port for alarm.

Part #: **TMHNS-COMBK**

Colours: Black

Unit of Measure: EA

Page 31



HOME NETWORKING PRODUCTS



TELEPHONE DISTRIBUTION MODULE

This voice distribution module allows connection between 6 locations and is equipped with an RJ31X port for alarm.

Part #: **TMHNS-TELBK**

Colours: Black

Unit of Measure: EA



DATA DISTRIBUTION MODULE

This data distribution module allows CAT5e connection to 8 locations.

Part #: **TMHNS-DATBK**

Colours: Black

Unit of Measure: EA



VIDEO DISTRIBUTION MODULE

This video distribution module combines 2 incoming 1GHZ signals to allow connection between 6 locations and is equipped with a power supply.

Part #: **TMHNS-VIDBK**

Colours: Black

Unit of Measure: EA



AUDIO DISTRIBUTION MODULE

This audio distribution module allows 2 incoming channel to connect with 8 outputs with the use of an impedance matching volume control device.

Part #: **TMHNS-AUDBK**

Colours: Black

Unit of Measure: EA

HOME NETWORKING PRODUCTS & PATCH PANELS



POWER DISTRIBUTION MODULE

This duplex power receptacle module provides 2 electrical NEMA 5-15R outlets.

Part #: **TMHNS-PWRBK**

Colours: Black

Unit of Measure: EA



UNIVERSAL MOUNTING PLATE

This universal mounting plate allows installation of splitter, hub or router.

Part #: **TMHNS-BLNBK**

Colours: Black

Unit of Measure: EA



12 PORT MINI PATCH PANEL W/ BRACKET

This CAT 5E or CAT 6 rated mini patch panel is designed with 110 termination and is equipped with a wall mount bracket.

Part #: **TMPP-12S8C5EBK**

Part #: **TMPP-12S8C6BK**

Colours: Black

(CAT 5E)

(CAT 6)

Unit of Measure: EA



CAT 5E RACK MOUNT PATCH PANEL

This CAT 5E patch panel is designed with 110 termination and will fit any standard 19" wall mount bracket, rack and cabinet.

Part #: **TMPP-128C5EBK**

Part #: **TMPP-248C5EBK**

Part #: **TMPP-488C5EBK**

Colours: Black

(1U)

(1U)

(2U)

Unit of Measure: EA

PATCH PANELS



CAT 6 RACK MOUNT PATCH PANEL

This CAT 6 patch panel is designed with 110 termination and will fit any standard 19" wall mount bracket, rack and cabinet.

Part #: **TMPP-128C6BK**

(1U)

Part #: **TMPP-248C6BK**

(1U)

Part #: **TMPP-488C6BK**

(2U)

Colours: Black

Unit of Measure: EA



BLANK KEYSTONE RACK MOUNT PANEL

This 19" rack mount panel accepts all **TSOC** keystone modules for any combination.

Part #: **TMPP-12BK (1U)**

TMPP-16BK (1U)

Part #: **TMPP-24BK (2U)**

TMPP-32BK (2U)

Part #: **TMPP-48BK (3U)**

Colours: Black

Unit of Measure: EA



KEYSTONE RACK MOUNT PANEL (HIGH DENSITY)

This keystone rack mount panel accepts all **TSOC** keystone modules for any combination.

Part #: **TMPP-16HDBK (1U)**

Part #: **TMPP-24HDBK (1U)**

Part #: **TMPP-48HDBK (2U)**

Colours: Black

Unit of Measure: EA



KEYSTONE MINI PATCH PANEL

This convenient wall mountable mini patch panel is equipped with either a single or dual hinged door and accepts all **TSOC** keystone modules for any combination.

Part #: **TMPP-HD12BG**

Dimensions: 7"W x 3.25"H x 2.50"D

Part #: **TMPP-HD24BG**

Dimensions: 7"W x 6.50"H x 2.50"D

Colours: Beige

Unit of Measure: EA



WALL MOUNT BRACKETS



PATCH PANEL MOUNTING KIT

Install any TSOC 1U patch panel using this simple and effective wall mount bracket.

Part #: **TMPP-BKTBK**

Colours: Black

Unit of Measure: EA



HINGED WALL MOUNT BRACKETS

This hinged wall mount bracket is designed to mount any standard 19" patch panel.

Part #: **TMWB-02BK**

(3.50" H x 5.0" D x 19" W)

Part #: **TMWB-04BK**

(7.00" H x 5.0" D x 19" W)

Part #: **TMWB-04DBK**

(7.00" H x 7.0" D x 19" W)

Colours: Black

Unit of Measure: EA



ADJUSTABLE WALL MOUNT RACK—1U

This hinged wall mount bracket with adjustable depth 9"-13.8" is designed to hold any standard 19" patch panel.

Part #: **TMWB-01BKA**

Colours: Black

Unit of Measure: EA



ADJUSTABLE WALL MOUNT RACK—2U

This hinged wall mount bracket with adjustable depth 9"-13.8" is designed to hold any standard 19" patch panel.

Part #: **TMWB-02BKA**

Colours: Black

Unit of Measure: EA

Page 33

KEYSTONE WALL PLATES



ADJUSTABLE WALL MOUNT RACK—4U

This hinged wall mount bracket with adjustable depth 9"-13.8" is designed to hold any standard 19" patch panel.

Part #: **TMWB-04BKA**

Colours: Black

Unit of Measure: EA



ADJUSTABLE WALL MOUNT RACK—8U

This hinged wall mount bracket with adjustable depth 9"-13.8" is designed to hold any standard 19" patch panel.

Part #: **TMWB-08BKA**

Colours: Black

Unit of Measure: EA



1 PORT KEYSTONE PLATE

This is single gang plastic wall plate smooth finish will accept any **TSOC** keystone module.

Part #: **TM602-K1SIV**

Part #: **TM602-K1SWH**

Colours: Ivory & White

Unit of Measure: EA



2 PORT KEYSTONE PLATE

This is single gang plastic wall plate smooth finish will accept any **TSOC** keystone module.

Part #: **TM602-K2SIV**

Part #: **TM602-K2SWH**

Colours: Ivory & White

Unit of Measure: EA



KEYSTONE WALL PLATES



3 PORT KEYSTONE PLATE

This is single gang plastic wall plate smooth finish will accept any **TSOC** keystone module.

Part #: **TM602-K3SIV**
Part #: **TM602-K3SWH**
Colours: Ivory & White

Unit of Measure: EA



4 PORT KEYSTONE PLATE

This is single gang plastic wall plate smooth finish will accept any **TSOC** keystone module.

Part #: **TM602-K4SIV**
Part #: **TM602-K4SWH**
Colours: Ivory & White

Unit of Measure: EA



6 PORT KEYSTONE PLATE

This is single gang plastic wall plate smooth finish will accept any **TSOC** keystone module.

Part #: **TM602-K6SIV**
Part #: **TM602-K6SWH**
Colours: Ivory & White

Unit of Measure: EA



8 PORT KEYSTONE PLATE

This is dual gang plastic wall plate smooth finish will accept any **TSOC** keystone module.

Part #: **TM602-K8SIV**
Part #: **TM602-K8SWH**
Colours: Ivory & White

Unit of Measure: EA

Page 34

KEYSTONE WALL PLATES



12 PORT KEYSTONE PLATE

This is dual gang plastic wall plate smooth finish will accept any **TSOC** keystone module.

Part #: **TM602-K12SIV**
Part #: **TM602-K12SWH**
Colours: Ivory & White

Unit of Measure: EA



1 PORT WALL PHONE KEYSTONE PLATE

This single gang plastic wall plate will accept all **TSOC** keystone modules to mount any Analogue, Digital or VOIP telephone.

Part #: **TM630-K1SWHHK**
Part #: **TM630-K1SIVHK**
Colours: White & Ivory

Unit of Measure: EA



1 & 2 PORT DECORA STRAP

This Decora strap is designed to accept all **TSOC** keystone modules for any combination.

Part #: **TM602-K1LWH**
Part #: **TM602-K2LIWH**
Colours: White & Ivory

TM602-K1LIV
TM602-K2LIV
Unit of Measure: EA



3 PORT DECORA STRAP

This Decora strap is designed to accept all **TSOC** keystone modules for any combination.

Part #: **TM602-K3LWH**
Part #: **TM602-K3LIV**
Colours: White & Ivory

Unit of Measure: EA



KEYSTONE WALL PLATES



4 PORT DECORA STRAP

This Decora strap is designed to accept all **TSOC** keystone modules for any combination.

Part #: **TM602-K4LWH**

Part #: **TM602-K4LIV**

Colours: White & Ivory

Unit of Measure: EA



6 PORT DECORA STRAP

This Decora strap is designed to accept all **TSOC** keystone modules for any combination.

Part #: **TM602-K6LWH**

Part #: **TM602-K6LIV**

Colours: White & Ivory

Unit of Measure: EA



COVER PLATE

This single gang cover plate is designed to fit over any TSOC Decora strap.

Part #: **TM602-SLWH**

Part #: **TM602-SLIV**

Colours: White & Ivory

Unit of Measure: EA



COVER PLATE

This dual gang cover plate is designed to fit over any TSOC Decora strap.

Part#: **TM602-DLWH**

Part#: **TM602-DLIV**

Colours: White & Ivory

Unit of Measure: EA

KEYSTONE WALL PLATES



1 PORT KEYSTONE WALL PLATE

This single gang stainless steel wall plate accepts all **TSOC** keystone modules.

Part #: **TM602-K1M**

Colours: Stainless Steel

Unit of Measure: EA



2 PORT KEYSTONE WALL PLATE

This single gang stainless steel wall plate accepts all **TSOC** keystone modules.

Part #: **TM602-K2M**

Colours: Stainless Steel

Unit of Measure: EA



3 PORT KEYSTONE WALL PLATE

This single gang stainless steel wall plate accepts all **TSOC** keystone modules.

Part #: **TM602-K3M**

Colours: Stainless Steel

Unit of Measure: EA



4 PORT KEYSTONE WALL PLATE

This single gang stainless steel wall plate accepts all **TSOC** keystone modules.

Part #: **TM602-K4M**

Colours: Stainless Steel

Unit of Measure: EA



KEYSTONE WALL PLATES



8 PORT KEYSTONE WALL PLATE

This dual gang stainless steel wall plate accepts all **TSOC** keystone modules.

Part #: **TM602-K8M**
Colours: Stainless Steel

Unit of Measure: EA



FURNITURE ADAPTER

This 3 port adapter is designed for installation in modular furniture and will accept any **TSOC** keystone module.

Part #: **TM602-K3FWH**
Colours: White

Unit of Measure: EA



FURNITURE ADAPTER

This 4 port adapter is designed for installation in modular furniture and will accept any **TSOC** keystone module.

Part #: **TM602-K4FWH**
Colours: White

Unit of Measure: EA



XO COUPLER

This CAT 6 Rated in-line coupler is designed to connect two RJ45 cable assemblies in a XO wiring configuration.

Part #: **TM608-8C6XGN**
Colours: Green

Unit of Measure: EA

COUPLERS



COUPLER

This CAT 6 Rated in-line coupler is designed to connect two RJ45 cable assemblies.

Part #: **TM608-8C6WH**
Part #: **TM608-8C6BK**
Colours: White & Black

Unit of Measure: EA



XO ADAPTER

This CAT 6 rated male to female adapter is designed to connect in between an RJ45 plug and receptacle to provide XO wiring configuration.

Part #: **TM608-8C6MFXRD**
Colours: Red

Unit of Measure: EA



XO ADAPTER

This CAT 3 rated male to female adapter is designed to connect in between an RJ45 plug and receptacle to provide XO wiring configuration.

Part #: **TM608-950XOWH**
Colours: White

Unit of Measure: EA



KEYSTONE COUPLER

This CAT 6 Rated in-line coupler is designed to connect two RJ45 cable assemblies and will fit any **TSOC** keystone outlet.

Part #: **TM608K-8C6HDBK** (UTP)
Part #: **TM608K-8C6HDWH** (UTP)
Part #: **TM608K-8C6HDSH** (STP)
Colours: Black, White & Shielded

Unit of Measure: EA



KEYSTONE SURFACE BOXES



1 PORT KEYSTONE SURFACE BOX

This surface mount box will accept all TM313 & TM314 series **TSOC** keystone modules.

Part #: **TM605-K1IV2**
Part #: **TM605-K1WH2**
Colours: Ivory & White

Unit of Measure: EA



2 PORT KEYSTONE SURFACE BOX

This surface mount box will accept all TM313 & TM314 series **TSOC** keystone modules.

Part #: **TM605-K2IV2**
Part #: **TM605-K2WH2**
Colours: Ivory & White

Unit of Measure: EA



KEYSTONE SURFACE BOX

This surface mount box will accept any **TSOC** keystone bezel and module.

Part #: **TM605-K2BWH**
Colours: White & Ivory

TM605-K2BIV
Unit of Measure: EA



KEYSTONE SURFACE BOX

This surface mount box will accept any combination **TSOC** keystone bezel and module.

Part #: **TM605-K4BWH**
Colours: White & Ivory

TM605-K4BIV
Unit of Measure: EA

Page 37

KEYSTONE SURFACE BOXES



KEYSTONE SURFACE BOX

This surface mount box will accept any combination **TSOC** keystone bezel and module.

Part #: **TM605-K6BWH**
Colours: White & Ivory

TM605-K6BIV
Unit of Measure: EA



KEYSTONE BEZEL

This 1 port bezel accepts all **TSOC** keystone modules for any combination.

Part #: **TM314-BZ1WH**
Colours: White & Ivory

TM314-BZ1IV
Unit of Measure: EA



KEYSTONE BEZEL

This 2 port bezel accepts all **TSOC** keystone modules for any combination.

Part #: **TM314-BZ2WH**
Colours: White & Ivory

TM314-BZ2IV
Unit of Measure: EA



KEYSTONE BEZEL

This blank bezel is installed when no **TSOC** keystone modules is required.

Part #: **TM314-BZBLWH**
Colours: White & Ivory

TM314-BZBLIV
Unit of Measure: EA



KEYSTONE MODULES



CAT 5E RJ45 KEYSTONE MODULE (TOOL-LESS)

This 4 pair DATA module requires no tool for termination and will fit any TSOC keystone outlet.

Part #: **TM313-8C5EWH**

Part #: **TM313-8C5EBK**

Part #: **TM313-8C5EBL**

Colours: White, Black & Blue

Unit of Measure: EA



CAT 6 RJ45 KEYSTONE MODULE (TOOL-LESS)

This 4 pair DATA module requires no tool for termination and will fit any TSOC keystone outlet.

Part #: **TM315-8C6WH**

Part #: **TM315-8C6BK**

Part #: **TM315-8C6BL**

Colours: White, Black & Blue

Unit of Measure: EA



CAT 6A 10G RJ45 KEYSTONE MODULE (TOOL-LESS)

This 180 degree DATA module is designed to fit any keystone outlet.

Part #: **TM315-8C6ABK**

Part #: **TM315-8C6ABL**

Part #: **TM315-8C6AWH**

Colours: Black, Blue & White

Unit of Measure:



CAT 6A SHIELDED 10G RJ45 MODULE (TOOL-LESS)

This 180 degree shielded DATA module is designed to minimize EMI/RFI and will fit any TSOC keystone outlet.

Part #: **TM315-8C6ASH**

Colours: Die Cast Metal

Unit of Measure: EA

KEYSTONE MODULES



CAT 5E RJ45 KEYSTONE MODULE (110)

This 4 pair DATA module requires a 110 punch down tool for termination and will fit any TSOC keystone outlet.

Part #: **TM314-8C5EWH**

Part #: **TM314-8C5EBK**

Part #: **TM314-8C5EBL**

Part #: **TM314-8C5ESH**

Colours: White, Black, Blue & Shielded Unit of Measure: EA



CAT 5E RJ45 HIGH DENSITY KEYSTONE MODULE (110)

This high density DATA module requires a 110 punch down tool for termination and will fit any TSOC keystone outlet.

Part #: **TM314-8C5EHDWH**

Part #: **TM314-8C5EHDBL**

Part #: **TM314-8C5EHDBK**

Colours: White, Black & Blue

Unit of Measure: EA



CAT 6 RJ45 KEYSTONE MODULE (110)

This 4 pair DATA module requires a 110 punch down tool for termination and will fit any TSOC keystone outlet.

Part #: **TM314-8C6WH**

Part #: **TM314-8C6BK**

Part #: **TM314-8C6BL**

Part #: **TM314-8C6SH**

Colours: White, Black, Blue & Shielded Unit of Measure: EA



CAT 5E SHIELDED RJ45 KEYSTONE MODULE (110)

This 90 degree shielded DATA module is designed to minimize EMI/RFI and will fit any TSOC keystone outlet.

Part #: **TM314-8C5ESH**

Colours: Stainless Steel

Unit of Measure: EA



KEYSTONE MODULES



BLANK KEYSTONE MODULE

This keystone module is used to fill unused ports in any TSOC keystone outlet.

Part #: **TM314-BLNIV-EA**
Part #: **TM314-BLNWH-EA**
Colours: White & Ivory

Unit of Measure: EA



SVHS FEED-THROUGH KEYSTONE MODULE

This video module is designed to accept any cable assembly with 4 Pin Mini Din connectors and will fit any TSOC keystone outlet.

Part #: **TM314-MDIV**
Part #: **TM314-MDWH**
Colours: White & Ivory

Unit of Measure: EA



RCA FEED-THROUGH KEYSTONE MODULE

This video module is designed to accept any cable assembly with RCA connectors and will fit any keystone outlet.

<u>WHITE</u>		<u>IVORY</u>
Part #: TM314-RCRD-WHF	(Red)	TM314-RCRD-IVF
Part #: TM314-RCYL-WHF	(Yellow)	TM314-RCYL-IVF
Part #: TM314-RCWH-WHF	(White)	TM314-RCWH-IVF
Colours: White & Ivory		Unit of Measure: EA
Insert Colours: Red, Yellow & White		



RCA 110 KEYSTONE MODULE

This video module is designed to accept 24AWG UTP cable and connect with any cable assembly with RCA connectors and will fit any TSOC keystone outlet.

<u>WHITE</u>		<u>IVORY</u>
Part #: TM314-RCRD-WH10	(Red)	TM314-RCRD-IV10
Part #: TM314-RCYL-WH10	(Yellow)	TM314-RCYL-IV10
Part #: TM314-RCWH-WH10	(White)	TM314-RCWH-IV10
Colours: White & Ivory		Unit of Measure: EA
Insert Colours: Red, Yellow & White		

Page 39



KEYSTONE MODULES



AUDIO KEYSTONE MODULE

This binding post module is designed to accept 14-26AWG speaker cable and will fit any TSOC keystone outlet.

WHITE
Part #: **TM314-BPRD-WH**
Part #: **TM314-BPBK-WH**
Colours: White & Ivory
Insert Colours: Black & Red

IVORY
TM314-BPRD-IV
TM314-BPBK-IV
Unit of Measure: EA



VIDEO KEYSTONE MODULE

This video module is designed to accept any cable assembly with F connectors and will fit any TSOC keystone outlet.

Part #: **TM314-FWH**
Part #: **TM314-FIV**
Colours: White & Ivory

Unit of Measure: EA



RCA SOLDER KEYSTONE MODULE

This video module is designed to accept any 24-26AWG cable and connect with any cable assembly with RCA connectors and

<u>WHITE</u>		<u>IVORY</u>
Part #: TM314-RCRD-WHS	(Red)	TM314-RCRD-IVS
Part #: TM314-RCYL-WHS	(Yellow)	TM314-RCYL-IVS
Part #: TM314-RCWH-WHS	(White)	TM314-RCWH-IVS
Colours: White & Ivory		Unit of Measure: EA
Insert Colours: Red, Yellow & White		



RCA-F KEYSTONE MODULE

This video module is designed to convert any cable assembly with F connectors to an RCA connector and will fit any TSOC keystone outlet.

Part #: **TM314-FRCBL-WH** (Blue)
Part #: **TM314-FRCGN-WH** (Green)
Part #: **TM314-FRCRD-WH** (Red)
Part #: **TM314-FRCWH-WH** (White)
Part #: **TM314-FRCYL-WH** (Yellow)
Colours: White
Unit of Measure: EA
Insert Colours: Blue, Green, Red, White & Yellow

DB09, DB15 & DB25 CONNECTORS



D-SUB MALE CRIMP PINS

This male crimp pin is designed to accept 19-22AWG cable and will fit any TSOC crimp d-sub connector.

Part #: **TM-70M**

Colours: N/A

Unit of Measure: 100/ PKG



D-SUB FEMALE CRIMP SOCKETS

This female crimp pin is designed to accept 19-22AWG cable and will fit any TSOC crimp d-sub connector.

Part #: **TM-70F**

Colours: Silver/Gold

Unit of Measure: 100/ PKG



DB09 CRIMP CONNECTOR SHELL

This 9 pin d-sub connector is designed to fit any TSOC hood kit.

Part #: **TM-7109F**

Part #: **TM-7109M**

Colours: Black

(FEMALE)

(MALE)

Unit of Measure: EA



DB15 CRIMP CONNECTOR SHELL

This 15 pin d-sub connector is designed to fit any TSOC hood kit.

Part #: **TM-7115F**

Part #: **TM-7115M**

Colours: Black

(FEMALE)

(MALE)

Unit of Measure: EA



D-SUB HOODS

DB25 CRIMP CONNECTOR SHELL

This 25 pin d-sub connector is designed to fit any TSOC hood kit.

Part #: **TM-7125F**

Part #: **TM-7125M**

Colours: Black

(FEMALE)

(MALE)

Unit of Measure: EA



DB09 HOOD W/ HARDWARE

This two piece plastic hood kit is designed to accept any TSOC 9 pin d-sub connector.

Part #: **TM-7209GY**

Part #: **TM-7309CR**

Part #: **TM-7409DM**

Colours: Grey

(PLASTIC)

(METALIZED PLASTIC)

(DIE CAST METAL)

Unit of Measure: EA



DB15 HOOD W/HARDWARE

This two piece plastic hood kit is designed to accept any TSOC 15 pin d-sub connector.

Part #: **TM-7215GY**

Part #: **TM-7315CR**

Part #: **TM-7415DM**

Colours: Grey

(PLASTIC)

(METALIZED PLASTIC)

(DIE CAST METAL)

Unit of Measure: EA



DB25 HOOD W/ HARDWARE

This two piece plastic hood kit is designed to accept any TSOC 15 pin d-sub connector.

Part #: **TM-7225GY**

Part #: **TM-7325CR**

Part #: **TM-7425DM**

Colours: Grey

(PLASTIC)

(METALIZED PLASTIC)

(DIE CAST METAL)

Unit of Measure: EA



MOD ADAPTER KITS



9 PIN RS232 TO MODULAR JACK

This adapter converts either gender 9 pin d-sub connector to a female 4, 6, 8 or 10 pin modular jack.

Part #: DB09-4MGY	DB09-4FGY
Part #: DB09-6MGY	DB09-6FGY
Part #: DB09-6MDECGY	DB09-6FDECGY
Part #: DB09-8MGY	DB09-8FGY
Part #: DB09-10MGY	DB09-10FGY
Colours: Grey	Unit of Measure: EA



15 PIN RS232 TO MODULAR JACK

This adapter converts either gender 15 pin d-sub connector to a female 4, 6, 8 or 10 pin modular jack.

Part #: DB15-4MGY	DB15-4FGY
Part #: DB15-6MGY	DB15-6FGY
Part #: DB15-6MDECGY	DB15-6FDECGY
Part #: DB15-8MGY	DB15-8FGY
Part #: DB15-10MGY	DB15-10FGY
Colours: Grey	Unit of Measure: EA



25 PIN RS232 TO MODULAR JACK

This adapter converts either gender 15 pin d-sub connector to a female 4, 6, 8 or 10 pin modular jack.

Part #: DB25-4MGY	DB25-4FGY
Part #: DB25-6MGY	DB25-6FGY
Part #: DB25-6MDECGY	DB25-6FDECGY
Part #: DB25-8MGY	DB25-8FGY
Part #: DB25-10MGY	DB25-10FGY
Colours: Grey	Unit of Measure: EA



DB09 GENDER CHANGERS SLIM LINE

This slim design 9 pin d-sub adapter is used to change the gender of any port.

Part #: TMGC-09FFSL	(FEMALE)
Part #: TMGC-09MMSL	(MALE)
Colours: NA	Unit of Measure: EA

Page 41

GENDER CHANGERS



HIGH DENSITY 15 PIN GENDER CHANGER

This slim design high density connector is designed to connect any two High Density 15 PIN VGA cable assemblies.

Part #: TMGC-HD15FFSL	(FEMALE)
Part #: TMGC-HD15MMSL	(MALE)
Colours: NA	Unit of Measure: EA



STAINLESS STEEL WALL PLATE

This single gang stainless steel wall plate accepts any TSOC High Density 15 PIN VGA gender changer.

Part #: TM602-HD15M	Unit of Measure: EA
Colours: Stainless Steel	



DB25 GENDER CHANGERS SLIM LINE

This slim design 25 pin d-sub adapter is used to change the gender of any port.

Part #: TMGC-25FFSL	(FEMALE)
Part #: TMGC-25MMSL	(MALE)
Colours: NA	Unit of Measure: EA



DB09 PORT SAVER SLIM LINE

This slim design 9 pin d-sub adapter is used to minimize mechanical wear on any port.

Part #: TMGC-09MFSL	Unit of Measure: EA
Colours: NA	



PORT SAVERS & ADAPTERS



HD15 PORT SAVER SLIM LINE

This slim design high density 15 pin d-sub adapter is used to minimize mechanical wear on any port.

Part #: **TMGC-HD15MFSL**

Colours: NA

Unit of Measure: EA



DB25 PORT SAVER SLIM LINE

This slim design 25 pin d-sub adapter is used to minimize mechanical wear on any port.

Part #: **TMGC-25MFSL**

Colours: NA

Unit of Measure: EA



DB25/DB25 NULL MODEM ADAPTER

This 25 pin d-sub adapter is designed to connect two terminals directly using an RS232 serial cable assembly.

Part #: **TMGC-25MMNM**

Part #: **TMGC-25MFNM**

Part #: **TMGC-25FFNM**

Colours: Grey

(MALE/MALE)

(MALE/FEMALE)

(FEMALE/FEMALE)

Unit of Measure: EA



C50 CENTRONICS GENDER CHANGER

This slim design 50 pin centronics adapter is used to change the gender of any port.



Part #: **TMGC-50MMSL**

Part #: **TMGC-50FFSL**

Colours: NA

(MALE/MALE)

(FEMALE/FEMALE)

Unit of Measure: EA

ADAPTERS & WEATHERPROOF OUTLETS

CAT 6 DVO SURFACE

This two piece DVO surface outlet is CAT 6 rated and equipped with 110 termination for quick installation.



Part #: **TM605-K18C6WH**

Part #: **TM605-K28C6WH**

Colours: White

(1 PORT)

(2 PORT)

Unit of Measure: EA



SINGLE SURFACE WEATHERPROOF OUTLET

This composite metal surface outlet is designed to accept any one keystone RJ45 module for installation in an outdoor environment.

Part #: **TM605ODM-8C5EGY**

Part #: **TM605ODM-8C6GY**

Colours: Grey

(CAT 5E)

(CAT 6)

Unit of Measure: EA



SINGLE SURFACE WEATHERPROOF OUTLET

This composite metal flush outlet is designed to accept any one keystone RJ45 module for installation in an outdoor environment.

Part #: **TM602ODM-8C5ESV**

Part #: **TM602ODM-8C6SV**

Colours: Grey

(CAT 5E)

(CAT 6)

Unit of Measure: EA



DUPLEX SURFACE WEATHERPROOF OUTLET

This composite metal surface outlet is designed to accept any one keystone RJ11 and RJ45 module for installation in an outdoor environment.

Part #: **TM615-68C5EGY**

Part #: **TM615-68C6GY**

Colours: Grey

(CAT 5E)

(CAT 6)

Unit of Measure: EA



WIRING CONFIGURATIONS

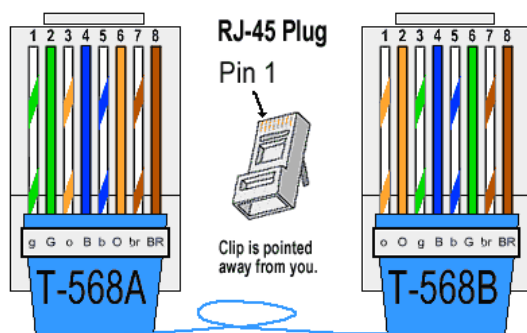
CANADA (Wiring Standard)

8P8C Wiring (TIA/EIA-568-A T568A)			
Pin	Pair	Wire	Color
1	3	1	white/green
2	3	2	green
3	2	1	white/orange
4	1	2	blue
5	1	1	white/blue
6	2	2	orange
7	4	1	white/brown
8	4	2	brown

USA (Wiring Standard)

8P8C Wiring (TIA/EIA-568-B T568B)			
Pin	Pair	Wire	Color
1	2	1	white/orange
2	2	2	orange
3	3	1	white/green
4	1	2	blue
5	1	1	white/blue
6	3	2	green
7	4	1	white/brown
8	4	2	brown

RJ-45 Crossover Ethernet Cable



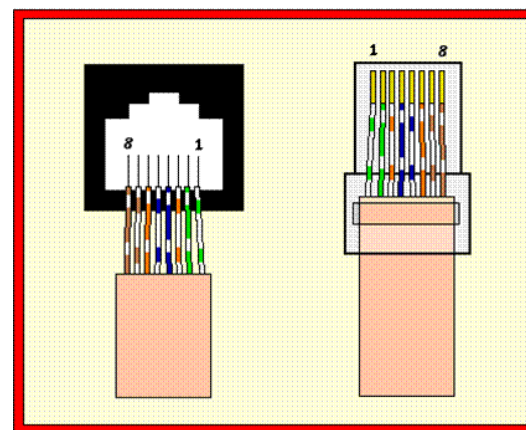
Page 43

WIRING CONFIGURATIONS

EIA/TIA T568A Standard

Pin Color

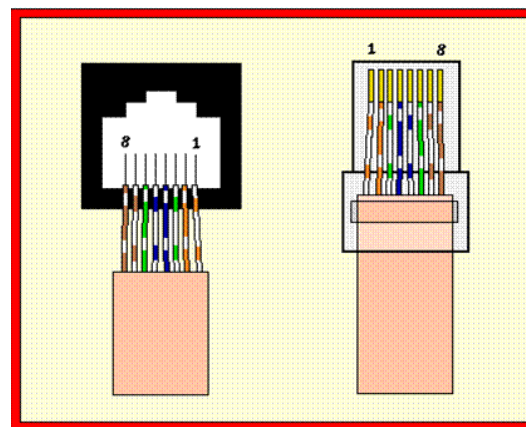
- 1 White/Green
- 2 Green/White
- 3 White/Orange
- 4 Blue/White
- 5 White/Blue
- 6 Orange/White
- 7 White/Brown
- 8 Brown/White



EIA/TIA T568B Standard

Pin Color

1. White/Orange
2. Orange/White
3. White/Green
4. Blue/White
5. White/Blue
6. Green/White
7. White/Brown
8. Brown/White



FEATURED PRODUCT

Name: Rapid Jack Tool
TSOC #CT-RJ314-8 (Pg.26)



Reduce installation time by terminating all 4 pair cable at once with the Rapid Jack Tool



Video Solutions



VIDEO PRODUCTS

- Tools
- Coax Splitters
- Compression Connectors
- Cable Assemblies
- Keystone Patch Panels
- Keystone Modules
- Keystone Wall Plates
- Cable Ties

TOOLS	46
TOOLS & WALL PLATES	47
WALL PLATES	47
KEYSTONE WALL PLATES	48
KEYSTONE WALL PLATES & CONNECTORS	49
KEYSTONE WALL PLATES	50
CONNECTORS	51
CONNECTORS & KEYSTONE MODULES	52
KEYSTONE MODULES & SPLITTERS	53
SPLITTERS & GROUNDING BLOCKS	54
CABLES & FASTENERS	55
BALUNS, CABLES & WEATHERPROOF OUTLETS	56
KEYSTONE PATCH PANELS & WALL MOUNT BRACKETS	57



TOOLS



COAX CRIMP TOOL

This ratchet type tool is designed to terminate any **TSOC** F type crimp connector for RG-59 & RG-6 coaxial cable.

Part #: **CT-RG59/6**

Colours: Red

Unit of Measure: EA



COAX COMPRESSION TOOL

This ratchet type tool is designed to terminate any **TSOC** F type compression connector for RG-59 & RG-6 coaxial cable.

Part #: **CT-RG59/6SS**

Colours: Red

Unit of Measure: EA



ENHANCED COAX COMPRESSION TOOL

This ratchet type tool with changeable dies is designed to terminate any **TSOC** F, RCA and BNC type compression connector for RG-59 & RG-6 coaxial cable.

Part #: **CT-RGSSA**

Colours: Red

Unit of Measure: EA



COAX COMPRESSION TOOL

This ratchet type tool is designed to terminate any **TSOC** F type compression connector for RG-11 coaxial cable.

Part #: **CT-RG11SS**

Colours: Red

Unit of Measure: EA

Page 46

TOOLS



COAX CABLE PREP TOOL

Adjustable strip tool for RG-59 and RG-6 coaxial cable.

Part #: **MST-332**

Colours: Grey

Unit of Measure: EA



ENHANCED COAX CABLE PREP TOOL

Adjustable cut and strip tool for RG-59, RG-6 and RG-11 coaxial cable.

Part #: **MST-RGA**

Colours: Blue

Unit of Measure: EA



COMPRESSION KIT

This kit is complete with compression tool, cable prep tool, side cutters, (6) RG-6 F type connectors, (3) RG-6 BNC type connectors & (3) RG-6 RCA type connectors.

Part #: **CT-RGSSAK1**

Colours: Blue

Unit of Measure: EA



GILBERT LOCKING TOOL

This tool is designed for use with the NF-5762 Gilbert Theft Proof F type Terminator.

Part #: **PT-GTT4**

Part #: **PT-GTT7**

Colours: Clear

(4 INCH)

(7 INCH)

Unit of Measure: EA



TOOLS & WALL PLATES



VDV WIRE MAP

This wire map tester with built in toner is suitable for Voice, Data and Video installations.

Part #: **TP350**
Colours: Yellow

Unit of Measure: EA



CABLE COMB

The TSOC #CC-250 Cable Comb is designed to organize Network Cabling during installation and provide a professional appearance.

Part #: **CC-250**
Colours: Yellow/ Blue

Unit of Measure: EA



SMOOTH FLUSH MOUNT JACK—SINGLE

This is a one piece plastic smooth finish single flush mount wall plate with a F-81 feed through barrel.

Part #: **TM602-FSIV**
Part #: **TM602-FSWH**
Colours: Ivory & White

Unit of Measure: EA



STAINLESS STEEL FLUSH MOUNT — SINGLE

This is a one piece stainless steel single flush mount wall plate with a F-81 feed through barrel.

Part #: **TM602-FSM**
Colours: Metal

Unit of Measure: EA

WALL PLATES



SMOOTH FLUSH MOUNT JACK—DUPLEX

This is a one piece plastic smooth finish duplex flush mount wall plate with a F-81 feed through barrel and 6 conductor screw terminal jack.

Part #: **TM612-6FSIV**
Part #: **TM612-6FSWH**
Colours: Ivory & White

Unit of Measure: EA



DECORA FLUSH MOUNT JACK—SINGLE

This is a one piece plastic Decora finish single flush mount wall plate with a F-81 feed through barrel.

Part #: **TM602-FDIV**
Part #: **TM602-FDWH**
Colours: Ivory & White

Unit of Measure: EA



DECORA FLUSH MOUNT JACK—DUPLEX

This is a one piece plastic Decora finish duplex flush mount wall plate with a F-81 feed through barrel and 6 conductor screw terminal jack.

Part #: **TM612-6FDIV**
Part #: **TM612-6FDWH**
Colours: Ivory & White

Unit of Measure: EA



SMOOTH FLUSH MOUNT PLATE—SINGLE

This is a one piece plastic smooth finish single flush mount wall plate with an opening for a F-81 feed through barrel.

Part #: **TM602-NFSIV**
Part #: **TM602-NFSWH**
Colours: Ivory & White

Unit of Measure: EA



WALL PLATES



STAINLESS STEEL FLUSH MOUNT PLATE—SINGLE

This is a one piece stainless steel single flush mount wall plate with an opening for a F-81 feed through barrel.

Part #: **TM602-NFSM**

Colours: Stainless Steel

Unit of Measure: EA



SMOOTH FLUSH MOUNT JACK—DUPLEX

This is a one piece plastic smooth finish duplex flush mount wall plate with two F-81 feed through barrels.

Part #: **TM612-FFSWH**

Part #: **TM612-FFSIV**

Colours: White & Ivory

Unit of Measure: EA



DECORA FLUSH MOUNT JACK—DUPLEX

This is a one piece plastic Decora finish duplex flush mount wall plate with two F-81 feed through barrels.

Part #: **TM612-FFDWH**

Part #: **TM612-FFDIV**

Colours: Ivory, White

Unit of Measure: EA



STAINLESS STEEL FLUSH MOUNT PLATE—DUPLEX

This is a one piece stainless steel duplex flush mount wall plate with an opening for two F-81 feed through barrels.

Part #: **TM612-NFFSM**

Colours: Metal

Unit of Measure: EA

Page 48

KEYSTONE WALL PLATES



1 PORT SMOOTH KEYSTONE PLATE

This is single gang plastic wall plate smooth finish will accept any **TSOC** keystone module.

Part #: **TM602-K1SIV**

Part #: **TM602-K1SWH**

Colours: Ivory & White

Unit of Measure: EA



2 PORT SMOOTH KEYSTONE PLATE

This is single gang plastic wall plate smooth finish will accept any **TSOC** keystone module.

Part #: **TM602-K2SIV**

Part #: **TM602-K2SWH**

Colours: Ivory & White

Unit of Measure: EA



3 PORT SMOOTH KEYSTONE PLATE

This is single gang plastic wall plate smooth finish will accept any **TSOC** keystone module.

Part #: **TM602-K3SIV**

Part #: **TM602-K3SWH**

Colours: Ivory & White

Unit of Measure: EA



4 PORT SMOOTH KEYSTONE PLATE

This is single gang plastic wall plate smooth finish will accept any **TSOC** keystone module.

Part #: **TM602-K4SIV**

Part #: **TM602-K4SWH**

Colours: Ivory & White

Unit of Measure: EA



KEYSTONE WALL PLATES & CONNECTORS



8 PORT DESIGNER KEYSTONE PLATE

This is dual gang plastic wall plate designer finish will accept any **TSOC** keystone module. Includes a protective lens over the screws.

Part #: **TM602-K8DIV**

Part #: **TM602-K8DWH**

Colours: White & Ivory

Unit of Measure: EA



12 PORT DESIGNER KEYSTONE PLATE

This is dual gang plastic wall plate designer finish will accept any **TSOC** keystone module. Includes a protective lens over the screws.

Part #: **TM602-K12DIV**

Part #: **TM602-K12DWH**

Colours: White & Ivory

Unit of Measure: EA



2 PIECE DECORA JACK—SINGLE

This is a 2 piece single gang smooth finish Decora strap with a F-81 barrel. Includes the cover plate.

Part #: **TM602-FLWH**

Colours: White

Unit of Measure: EA



2 PIECE DECORA JACK—SINGLE

This is a 2 piece single gang duplex smooth finish Decora strap with a F-81 barrel and 4 conductor screw terminal jack. Includes the cover plate.

Part #: **TM612-4FLWH**

Colours: White & Ivory

Unit of Measure: EA



WEATHERPROOF OUTLETS

This composite metal surface outlet is designed to accept any one keystone F module for installation in an outdoor environment.

Part #: **TM605ODM-F8IGY**

Colours: Black

Unit of Measure: EA

Page 49

CONNECTORS



F-TYPE SNAP & SEAL CONNECTOR

This F type RG-6 compression connector is suitable for 75-Ohm coaxial cable.

Part #: **TMRG-6CONSS**

Part #: **TMRG-6CONSSWP** (Weather Proof)

Colours: Chromate

Unit of Measure: 10/ PKG



F-TYPE COMPRESSION CONNECTOR

This F type RG-59 compression connector is suitable for 75-Ohm coaxial cable.

Part #: **TMRG-59CONSS**

Part #: **TMRG-59CONSSWP** (Weather Proof)

Colours: Chromate

Unit of Measure: 10/ PKG



F-TYPE COMPRESSION CONNECTOR

This F type RG-11 compression connector is suitable for 75-Ohm coaxial cable.

Part #: **TMRG-11FCONSS**

Colours: Silver

Unit of Measure: EA



F-TYPE COMPRESSION CONNECTOR

This F type RG-59 compression connector is suitable for 75-Ohm coaxial cable.

Part #: **TMRG-59FCONSS**

Part #: **TMRG-59FCONSS2**

Colours: Silver/Red

Unit of Measure: 10/ PKG



KEYSTONE WALL PLATES



6 PORT SMOOTH KEYSTONE PLATE

This is single gang plastic wall plate smooth finish will accept any **TSOC** keystone module.

Part #: **TM602-K6SIV**
Part #: **TM602-K6SWH**
Colours: Ivory & White

Unit of Measure: EA



8 PORT SMOOTH KEYSTONE PLATE

This is dual gang plastic wall plate smooth finish will accept any **TSOC** keystone module.

Part #: **TM602-K8SIV**
Part #: **TM602-K8SWH**
Colours: Ivory & White

Unit of Measure: EA



12 PORT SMOOTH KEYSTONE PLATE

This is dual gang plastic wall plate smooth finish will accept any **TSOC** keystone module.

Part #: **TM602-K12SIV**
Part #: **TM602-K12SWH**
Colours: Ivory & White

Unit of Measure: EA



1 PORT DESIGNER KEYSTONE PLATE

This is single gang plastic wall plate designer finish will accept any **TSOC** keystone module. Includes a protective lens over the screws.

Part #: **TM602-K1DIV**
Part #: **TM602-K1DWH**
Colours: Ivory & White

Unit of Measure: EA

Page 50

KEYSTONE WALL PLATES



2 PORT DESIGNER KEYSTONE PLATE

This is single gang plastic wall plate designer finish will accept any **TSOC** keystone module. Includes a protective lens over the screws.

Part #: **TM602-K2DIV**
Part #: **TM602-K2DWH**
Colours: Ivory & White

Unit of Measure: EA



3 PORT DESIGNER KEYSTONE PLATE

This is single gang plastic wall plate designer finish will accept any **TSOC** keystone module. Includes a protective lens over the screws.

Part #: **TM602-K3DIV**
Part #: **TM602-K3DWH**
Colours: Ivory & White

Unit of Measure: EA



4 PORT DESIGNER KEYSTONE PLATE

This is single gang plastic wall plate designer finish will accept any **TSOC** keystone module. Includes a protective lens over the screws.

Part #: **TM602-K4DIV**
Part #: **TM602-K4DWH**
Colours: White & Ivory

Unit of Measure: EA



4 PORT DESIGNER KEYSTONE PLATE

This is single gang plastic wall plate designer finish will accept any **TSOC** keystone module. Includes a protective lens over the screws.

Part #: **TM602-K6DIV**
Part #: **TM602-K6DWH**
Colours: White & Ivory

Unit of Measure: EA



CONNECTORS



BNC COMPRESSION CONNECTOR

This BNC compression connector is designed for use with FT-4 rated RG6 coaxial cable. Colour coded ID rings included.

Part #: **TMRG-59BCONSS** RG59
 Part #: **TMRG-6BCONSS** RG6
 Colours: Black Unit of Measure: EA



RCA COMPRESSION CONNECTOR

This RCA compression connector is designed for use with FT-4 rated RG6 coaxial cable. Colour coded ID rings included.

Part #: **TMRG-59RCONSS** RG59
 Part #: **TMRG-6RCONSS** RG6
 Colours: Black Unit of Measure: EA



F-TYPE FEEDTHRU CONNECTOR

This coupler is designed to join an RG59 or RG6 coaxial cable assembly and includes hardware for mounting in any TSOC wall plate or patch panel.

Part #: **TMFC-BAR** 1GHz
 Part #: **TMFC-BARL** 1GHz
 Part #: **TMFC2-BARL** 2GHz
 Colours: Silver Unit of Measure: 10/ PKG



F-TYPE CRIMP CONNECTOR—NON PLENUM

This F type crimp connector with 1/2" attached ferrule is suitable for FT-4 rated RG6 coaxial cable.

Part #: **TMRG-6CON**
 Part #: **TMRG-6CONWP** Weather Proof
 Colours: Silver Unit of Measure: 10/ PKG

Page 51

CONNECTORS



F-TYPE COMPRESSION CONNECTOR

This F type compression connector is suitable for FT-4 rated RG6 coaxial cable.

Part #: **TMRG-6FCONSS**
 Part #: **TMRG-6FCONSS2**

Colours: Silver/Yellow

Unit of Measure: 10/ PKG



GILBERT LOCKING CONNECTOR

This theft proof connector is designed to protect any unused active ports on field equipment.

Part #: **TMRG-LT1** (includes resistor)
 Part #: **TMRG-LT2** (no resistor)
 Colours: N/A Unit of Measure: EA



F CONNECTOR LOCKING TOOL

This tool is designed to install/remove the TMRG-SLK1 F-Connector Lock.

Part #: **PT-SLK1**
 Colours: N/A Unit of Measure: EA



F CONNECTOR LOCK

This theft proof connector is designed to protect any RG59 or RG6 F type cable assembly from being removed.

Part #: **TMRG-SLK1**
 Colours: N/A Unit of Measure: EA



CONNECTORS



F-TYPE COMPRESSION CONNECTOR

This F type compression connector is suitable for quad shielded FT-4 rated RG6 coaxial cable.

Part #: **TMRG-6QFCONSS**

Colours: Silver/ Blue

Unit of Measure: 10/ PKG



F-TYPE CRIMP CONNECTOR—PLENUM

This F type crimp connector with 1/2" attached ferrule is suitable for FT-6 rated RG6 coaxial cable.

Part #: **TMRG-6CONPL**

Colours: Silver

Unit of Measure: 10/ PKG



TWIST TYPE CONNECTOR

This F type twist connector with 1/2" attached ferrule is suitable for FT-4 rated RG6 coaxial cable.

Part #: **TMRG-6CONTW**

Colours: Silver

Unit of Measure: 10/ PKG



F-TYPE CRIMP CONNECTOR

This F type crimp connector with 1/2" attached ferrule is suitable for FT-4 rated RG59 coaxial cable.

Part #: **TMRG-59CON**

Part #: **TMRG-59CONWP**

Colours: Silver

Weather Proof

Unit of Measure: 10/ PKG

Page 52

CONNECTORS & KEYSTONE MODULES



BNC TYPE TWIST CONNECTOR - RG59

This BNC type twist connector with 1/2" attached ferrule is suitable for FT-4 rated RG59 cable.

Part #: **TMRG-59BCONTW**

Colours: Silver

Unit of Measure: EA



BNC TYPE TWIST CONNECTOR - RG6

This BNC type twist connector with 1/2" attached ferrule is suitable for FT-4 rated RG6 cable.

Part #: **TMRG-6BCONTW**

Colours: Silver

Unit of Measure: EA



BLANK KEYSTONE MODULE

This keystone module is used to fill unused ports in any TSOC keystone outlet.

Part #: **TM314-BLNIV-EA**

Part #: **TM314-BLNWH-EA**

Colours: White & Ivory

Unit of Measure: EA



AUDIO KEYSTONE MODULE

This binding post module is designed to accept 14-26AWG speaker cable and will fit any TSOC keystone outlet.

WHITE

Part #: **TM314-BPRD-WH**

Part #: **TM314-BPBK-WH**

Colours: White & Ivory

Insert Colours: Black & Red

IVORY

TM314-BPRD-IV

TM314-BPBK-IV

Unit of Measure: EA



Transglobal Systems of Canada Inc.

39-6635 Kitimat Road | Mississauga, Ontario L5N 6J2

Tel: 905 813 8762 | Fax: 905 813 7379 | Email: info@tsoc.com

KEYSTONE MODULES

VIDEO KEYSTONE MODULE

This video module is designed to accept an RG59 or RG6 cable assembly with F connectors and will fit any TSOC keystone outlet.



Part #: **TM314-FWH**

Part #: **TM314-FIV**

Colours: White & Ivory

Unit of Measure: EA

RCA FEED-THROUGH KEYSTONE MODULE

This video module is designed to accept any cable assembly with RCA connectors and will fit any keystone outlet.



WHITE

Part #: **TM314-RCRD-WHF**

Part #: **TM314-RCYL-WHF**

Part #: **TM314-RCWH-WHF**

Colours: White & Ivory

Insert Colours: Red, Yellow & White

IVORY

Part #: **TM314-RCRD-IVF**

Part #: **TM314-RCYL-IVF**

Part #: **TM314-RCWH-IVF**

Unit of Measure: EA

RCA SOLDER KEYSTONE MODULE

This video module is designed to accept any 24-26AWG cable and connect with any cable assembly with RCA connectors and will fit any TSOC keystone outlet.



WHITE

Part #: **TM314-RCRD-WHS**

Part #: **TM314-RCYL-WHS**

Part #: **TM314-RCWH-WHS**

Colours: White & Ivory

Insert Colours: Red, Yellow & White

IVORY

Part #: **TM314-RCRD-IVS**

Part #: **TM314-RCYL-IVS**

Part #: **TM314-RCWH-IVS**

Unit of Measure: EA

Page 53

KEYSTONE MODULES

RCA 110 KEYSTONE MODULE

This video module is designed to accept 24AWG UTP cable and connect with any cable assembly with RCA connectors and will fit any TSOC keystone outlet.



WHITE

Part #: **TM314-RCRD-WH10** (Red)

Part #: **TM314-RCYL-WH10** (Yellow)

Part #: **TM314-RCWH-WH10** (White)

Colours: White & Ivory

Insert Colours: Red, Yellow & White

IVORY

Part #: **TM314-RCRD-IV10**

Part #: **TM314-RCYL-IV10**

Part #: **TM314-RCWH-IV10**

Unit of Measure: EA

SVHS FEED-THROUGH KEYSTONE MODULE

This video module is designed to accept any cable assembly with 4 Pin Mini Din connectors and will fit any TSOC keystone outlet.



Part #: **TM314-MDIV**

Part #: **TM314-MDWH**

Colours: White & Ivory

Unit of Measure: EA

RCA-F KEYSTONE MODULE

This video module is designed to convert any RG59 or RG6 cable assembly with an F connector to an RCA connector and will fit any TSOC keystone outlet.



Part #: **TM314-FRCBL-WH** (Blue)

Part #: **TM314-FRCGN-WH** (Green)

Part #: **TM314-FRCRD-WH** (Red)

Part #: **TM314-FRCWH-WH** (White)

Part #: **TM314-FRCYL-WH** (Yellow)

Colours: White

Unit of Measure: EA

Insert Colours: Blue, Green, Red, White & Yellow



Transglobal Systems of Canada Inc.

39-6635 Kitimat Road | Mississauga, Ontario | L5N 6J2

Tel: 905 813 8762 | Fax: 905 813 7329 | Email: info@tsoc.com

SPLITTERS



SPLITTER - 2 WAY

This 2 GHZ splitter is suitable for installation with F type connectors.

Part #: **TMSPL2-2**
Colours: Silver

Unit of Measure: EA



SPLITTERS - 3 WAY

This 2 GHZ splitter is suitable for installation with F type connectors.

Part #: **TMSPL2-3**
Colours: Silver

Unit of Measure: EA



SPLITTERS - 4 WAY

This 2 GHZ splitter is suitable for installation with F type connectors.

Part #: **TMSPL2-4**
Colours: Silver

Unit of Measure: EA

GROUNDING BLOCKS



SPLITTERS - 6 WAY

This 2 GHZ splitter is suitable for installation with F type connectors.

Part #: **TMSPL2-6**
Colours: Silver

Unit of Measure: EA



SPLITTERS - 8 WAY

This 2 GHZ splitter is suitable for installation with F type connectors.

Part #: **TMSPL2-8**
Colours: Silver

Unit of Measure: EA



GROUNDING BLOCK

This 2 GHZ grounding block is weather resistant and suitable for installation with F type connectors.

Part #: **TMGRN2-1**
Part #: **TMGRN2-2**
Colours: Chromate

SINGLE
DOUBLE
Unit of Measure: EA



FASTENERS

NYLON CABLE TIES

Bundle and secure cables using nylon cable ties.



Part #: TF-4BK	(4")	TF-4IV	(4")
Part #: TF-8BK	(8")	TF-8IV	(8")
Part #: TF-8HBK	(8" W/ HOLE)	TF-8HIV	(8" W/ HOLE)
Part #: TF-11BK	(11")	TF-11IV	(11")
Part #: TF-14BK	(14")	TF-14IV	(14")
Colours: Black UV or Natural		Unit of Measure: 100/PKG	

VELCRO CABLE TIES

Bundle and secure cables using Velcro cable ties available in various colours and 3 standard lengths.



Part #: TV-8**	(8")	Unit of Measure: 10/ PKG
Part #: TV-12**	(12")	
Part #: TV-18**	(18")	
Colours: Please Enquire		

SCREW TIE MOUNTS

This mount is installed to a surface with a standard screw and allows cable bundles to be secured using TSOC cable ties.



Part #: FTH-13SIV	(1/2")	Unit of Measure: 25/ PKG
Part #: FTH-14SIV	(3/4")	
Colours: Natural		

ADHESIVE TIE MOUNTS

This self adhesive mount is installed to a surface to allow cable bundles to be secured using TSOC cable ties.



Part #: TFB-3AIV	(3/4")	Unit of Measure: 25/ PKG
Part #: TFB-5AIV	(1")	
Colours: Natural		

Page 55

CABLES

RG-6 COAXIAL CABLE



This 18AWG bare copper 60% braided shield FT-4 rated RG6 coaxial cable is recommended for CATV and Satellite installations. (305M/1000 FT) Box.

Part #: FT4-RG6WH2	White
Part #: FT4-RG6BK2	Black
Unit of Measure: EA	

HDMI 1.4 CABLES

This shielded cable assembly is used to transmit uncompressed digital Audio and Video signal.



Part #: HDMI-03MMBK-1.4	(3FT)	Part #: HDMI-25MMBK-1.4	(25FT)
Part #: HDMI-06MMBK-1.4	(6FT)	Part #: HDMI-50MMBK-1.4	(50FT)
Part #: HDMI-10MMBK-1.4	(10FT)	Part #: HDMI-75MMBK-1.4	(75FT)
Part #: HDMI-15MMBK-1.4	(15FT)	Part #: HDMI-100MMBK-1.4	(100FT)

Colours: Black Unit of Measure: EA

RCA COMPONENT CABLES

This colour coded molded 75-Ohm RG-59 shielded coaxial cable assembly with RCA connectors is used to transmit an analogue Audio and Video signal.



Part #: TMDUB-03BK	(3FT)	Unit of Measure: EA
Part #: TMDUB-06BK	(6FT)	
Part #: TMDUB-12BK	(12FT)	
Colours: Black		

CABLE CLIPS

Surface mount RG-59 or RG-6 cable using this plastic clip equipped with a 1/4" concrete nail.



Part #: TMNC-02WH	White	Unit of Measure: 25/ PKG
Part #: TMNC-02BK	Black	



BALUNS & CABLES

BALUNS



This DATA balun is designed for a legacy TOKEN RING network application converting a BNC to RJ45 connection.

Part #: **BL-BNCM45F-45**

Colours: Black

Unit of Measure: EA

BALUNS



This pair of VIDEO baluns are designed for a CCTV network application converting a BNC to RJ45 including an AC power connection.

Part #: **BL-BNCM45FV-PR**

Colours: Black

Unit of Measure: 2/ PKG

F CABLES



This F cable assembly is designed with coaxial cable and compression connectors for maximum performance and reliability.

Part #: **F6-03MMBK** (3FT)

Part #: **F6-06MMBK** (6FT)

Part #: **F6-12MMBK** (12FT)

Colours: Black

Unit of Measure: EA

Custom Lengths: PLEASE ENQUIRE

RCA CABLES



This RCA cable assembly is designed with coaxial cable and compression connectors for maximum performance and reliability.

Part #: **RCA6-03MMBK** (3FT)

Part #: **RCA6-06MMBK** (6FT)

Part #: **RCA6-12MMBK** (12FT)

Colours: Black

Unit of Measure: EA

Custom Lengths: PLEASE ENQUIRE

CABLES

BNC CABLES



This BNC cable assembly is designed with coaxial cable and compression connectors for maximum performance and reliability.

Part #: **LBNC59-01MMBK** (1FT)

Part #: **LBNC59-03MMBK** (3FT)

Part #: **LBNC59-06MMBK** (6FT)

Part #: **LBNC59-12MMBK** (12FT)

Colours: Black

Unit of Measure: EA

VGA CABLES



This VGA cable assembly is designed with stranded wire and molded connectors with ferrites for maximum performance and reliability.

Part #: **HD15MHD15M03BK** (3 FT) **HD15MHD15M06BK** (6 FT)

Part #: **HD15MHD15M10BK** (10 FT) **HD15MHD15M15BK** (15 FT)

Part #: **HD15MHD15M25BK** (25 FT) **HD15MHD15M50BK** (50 FT)

Part #: **HD15MHD15M75BK** (75 FT) **HD15MHD15M100BK** (100 FT)

Colours: Black

Unit of Measure: EA

CUSTOM PLUG AND PLAY SVGA CABLE



Custom Plug and Play SVGA cables are designed to be easily disconnected and reconnected at one end, so they can be pulled through a 3/4" conduit.

Part #: **HDXHDX-XX-PNP**

X- (Male or Female)

XX- Custom Length in Ft

Colours: Black

Unit of Measure: EA

VGA CABLES with AUDIO



This VGA cable assembly is designed with stranded wire and molded connectors with ferrites and equipped with a stereo mini plug for maximum performance and reliability.

Part #: **HD15MHD15M03BK-ST** (3 FT) **HD15MHD15M06BK-ST** (6 FT)

Part #: **HD15MHD15M10BK-ST** (10 FT) **HD15MHD15M15BK-ST** (15 FT)

Part #: **HD15MHD15M25BK-ST** (25 FT) **HD15MHD15M50BK-ST** (50 FT)

Part #: **HD15MHD15M75BK-ST** (75 FT) **HD15MHD15M100BK-ST** (100 FT)

Colours: Black

Unit of Measure: EA



KEYSTONE PATCH PANELS & WALL MOUNT BRACKETS



12 PORT WALL MOUNTABLE PANEL

This handy wall mountable single hinged panel accepts all **TSOC** keystone modules for any combination.

Dimensions: 7"W x 3.25"H x 2.50"D

Part #: **TMPP-HD12BG**

Colours: Beige

Unit of Measure: EA



24 PORT WALL MOUNTABLE PANEL

This handy wall mountable double hinged panel accepts all **TSOC** keystone modules for any combination.

Dimensions: 7"W x 6.50"H x 2.50"D

Part #: **TMPP-HD24BG**

Colours: Beige

Unit of Measure: EA



BLANK KEYSTONE RACK MOUNT PANEL

This 19" rack mount panel accepts all **TSOC** keystone modules for any combination.

Part #: **TMPP-12BK (1U)**

Part #: **TMPP-24BK (2U)**

Part #: **TMPP-48BK (3U)**

Colours: Black

TMPP-16BK (1U)

TMPP-32BK (2U)

Unit of Measure: EA



HINGED WALL MOUNT BRACKETS

This hinged wall mount bracket is designed to hold any standard 19" patch panel.

Part #: **TMWB-02BK**

Part #: **TMWB-04BK**

Part #: **TMWB-04DBK**

Colours: Black

(3.50" H x 5.0" D x 19" W)

(7.00" H x 5.0" D x 19" W)

(7.00" H x 7.0" D x 19" W)

Unit of Measure: EA

Page 57



KEYSTONE RACK MOUNT PANEL (HIGH DENSITY)

This keystone rack mount panel accepts all **TSOC** keystone modules for any combination.

Part #: **TMPP-16HDBK (1U)**

Part #: **TMPP-24HDBK (1U)**

Part #: **TMPP-48HDBK (2U)**

Colours: Black

Unit of Measure: EA



ADJUSTABLE WALL MOUNT RACK—1U

This hinged wall mount bracket with adjustable depth 9"-13.8" is designed to hold any standard 19" patch panel.

Part #: **TMWB-01BKA**

Part #: **TMWB-02BKA**

Part #: **TMWB-04BKA**

Part #: **TMWB-08BKA**

Colours: Black

Unit of Measure: EA



RACK MOUNT SCREWS

These 10/32 rack mount screws are used to install cable management hardware on **TSOC** racks and wall mount brackets.

Part #: **TM-RKS**

Colours: Black

Unit of Measure: 4/ PKG



BNC PATCH PANELS

This patch panel is equipped with female to female 75OHM isolated BNC connectors and designed for distribution of Security Network Cabling.

Part #: **TMPP-16BNC-75L (16 Port, 1U)**

Part #: **TMPP-24BNC-75L (24 Port, 1U)**

Part #: **TMPP-32BNC-75L (32 Port, 2U)**

Part #: **TMPP-48BNC-75L (48 Port, 2U)**

Colours: Black

Unit of Measure: EA



FEATURED PRODUCT

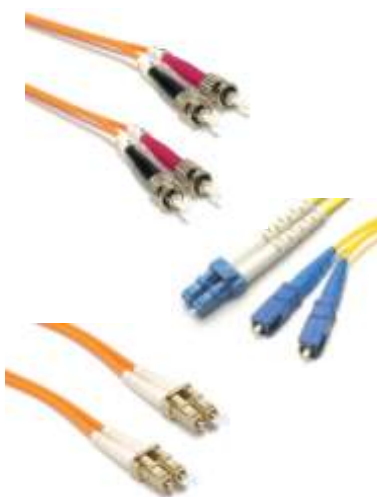
Name: Field Installable VGA Cable Assembly
TSOC #HDXHDX-XX-PNP (Pg.56)



Avoid cutting large holes in walls by using the modular VGA Cable Assemblies



Fiber Cable Solutions



FIBER PRODUCTS

- Patch Cables
- Pigtails
- Breakout Cables w/Pull Eye Kit
- Custom Cable Assembly
- Multimode 62.5u
- Multimode 50u
- Singlemode 9u

MULTIMODE 62.5u	60
HYBRID MULTIMODE 62.5u	61
MULTIMODE 50u	62
HYBRID MULTIMODE 50u	63
SINGLEMODE 9u UPC	63
HYBRID SINGLEMODE 9u UPC	65
HOW FIBER OPTIC CABLES WORK	65
MULTIMODE VS. SINGLEMODE FIBER	65



MULTIMODE 62.5u FIBER PATCH CABLES



ST-ST SIMPLEX - 62.5u

Part #:TSS288M1 (1M)
Part #:TSS288M3 (3M)
Part #:TSS288M10 (10M)
Colours: Orange

Part #:TSS288M2 (2M)
Part #:TSS288M5 (5M)

Unit of Measure: EA



SC-SC SIMPLEX - 62.5u

Part #:TSS2YYM1 (1M)
Part #:TSS2YYM3 (3M)
Part #:TSS2YYM10 (10M)
Colours: Orange

Part #:TSS2YYM2 (2M)
Part #:TSS2YYM5 (5M)

Unit of Measure: EA



LC-LC SIMPLEX - 62.5u

Part #:TSY2LLM1 (1M)
Part #:TSY2LLM3 (3M)
Part #:TSY2LLM10 (10M)
Colours: Orange

Part #:TSY2LLM2 (2M)
Part #:TSY2LLM5 (5M)

Unit of Measure: EA

Standard length in metres.
1M = 3.281 FT

MULTIMODE 62.5u FIBER PATCH CABLES



ST-ST DUPLEX - 62.5u

Part #:TSD288M1 (1M)
Part #:TSD288M3 (3M)
Part #:TSD288M10 (10M)
Colours: Orange

Part #:TSD288M2 (2M)
Part #:TSD288M5 (5M)

Unit of Measure: EA



SC-SC DUPLEX - 62.5u

Part #:TSD2YYM1 (1M)
Part #:TSD2YYM3 (3M)
Part #:TSD2YYM10 (10M)
Colours: Orange

Part #:TSD2YYM2 (2M)
Part #:TSD2YYM5 (5M)

Unit of Measure: EA



LC-LC DUPLEX - 62.5u

Part #:TSX2LLM1 (1M)
Part #:TSX2LLM3 (3M)
Part #:TSX2LLM10 (10M)
Colours: Orange

Part #:TSX2LLM2 (2M)
Part #:TSX2LLM5 (5M)

Unit of Measure: EA

Custom lengths available
Breakout Cables w/Pull Eye Kits available



HYBRID MULTIMODE 62.5u FIBER PATCH CABLES



ST-SC SIMPLEX - 62.5u

Part #:TSS28YM1 (1M)
Part #:TSS28YM3 (3M)
Part #:TSS28YM10 (10M)
Colours: Orange

Part #:TSS28YM2 (2M)
Part #:TSS28YM5 (5M)

Unit of Measure: EA



SC-LC SIMPLEX - 62.5u

Part #:TSY2YLM1 (1M)
Part #:TSY2YLM3 (3M)
Part #:TSY2YLM10 (10M)
Colours: Orange

Part #:TSY2YLM2 (2M)
Part #:TSY2YLM5 (5M)

Unit of Measure: EA



ST-LC SIMPLEX - 62.5u

Part #:TSY28LM1 (1M)
Part #:TSY28LM3 (3M)
Part #:TSY28LM10 (10M)
Colours: Orange

Part #:TSY28LM2 (2M)
Part #:TSY28LM5 (5M)

Unit of Measure: EA

Standard length in metres.
1M = 3.281 FT

HYBRID MULTIMODE 62.5u FIBER PATCH CABLES



ST-SC DUPLEX - 62.5u

Part #:TSD28YM1 (1M)
Part #:TSD28YM3 (3M)
Part #:TSD28YM10 (10M)
Colours: Orange

Part #:TSD28YM2 (2M)
Part #:TSD28YM5 (5M)

Unit of Measure: EA



SC-LC DUPLEX - 62.5u

Part #:TSX2YLM1 (1M)
Part #:TSX2YLM3 (3M)
Part #:TSX2YLM10 (10M)
Colours: Orange

Part #:TSX2YLM2 (2M)
Part #:TSX2YLM5 (5M)

Unit of Measure: EA



ST-LC DUPLEX - 62.5u

Part #:TSX28LM1 (1M)
Part #:TSX28LM3 (3M)
Part #:TSX28LM10 (10M)
Colours: Orange

Part #:TSX28LM2 (2M)
Part #:TSX28LM5 (5M)

Unit of Measure: EA

Custom lengths available
Breakout Cables w/Pull Eye Kits available



MULTIMODE 50u FIBER PATCH CABLES



ST-ST SIMPLEX - 50u

Part #:TSS188M1 (1M)
Part #:TSS188M3 (3M)
Part #:TSS188M10 (10M)
Colours: Orange

Part #:TSS188M2 (2M)
Part #:TSS188M5 (5M)

Unit of Measure: EA



SC-SC SIMPLEX - 50u

Part #:TSS1YYM1 (1M)
Part #:TSS1YYM3 (3M)
Part #:TSS1YYM10 (10M)
Colours: Orange

Part #:TSS1YYM2 (2M)
Part #:TSS1YYM5 (5M)

Unit of Measure: EA



LC-LC SIMPLEX - 50u

Part #:TSY1LLM1 (1M)
Part #:TSY1LLM3 (3M)
Part #:TSY1LLM10 (10M)
Colours: Orange

Part #:TSY1LLM2 (2M)
Part #:TSY1LLM5 (5M)

Unit of Measure: EA

Standard length in metres.
1M = 3.281 FT

MULTIMODE 50u FIBER PATCH CABLES



ST-ST DUPLEX - 50u

Part #:TSD188M1 (1M)
Part #:TSD188M3 (3M)
Part #:TSD188M10 (10M)
Colours: Orange

Part #:TSD188M2 (2M)
Part #:TSD188M5 (5M)

Unit of Measure: EA



SC-SC DUPLEX - 50u

Part #:TSD1YYM1 (1M)
Part #:TSD1YYM3 (3M)
Part #:TSD1YYM10 (10M)
Colours: Orange

Part #:TSD1YYM2 (2M)
Part #:TSD1YYM5 (5M)

Unit of Measure: EA



LC-LC DUPLEX - 50u

Part #:TSX1LLM1 (1M)
Part #:TSX1LLM3 (3M)
Part #:TSX1LLM10 (10M)
Colours: Orange

Part #:TSX1LLM2 (2M)
Part #:TSX1LLM5 (5M)

Unit of Measure: EA

Custom lengths available
Breakout Cables w/Pull Eye Kits available



HYBRID MULTIMODE 50u FIBER PATCH CABLES



ST-SC DUPLEX - 50u

Part #:TSD18YM1 (1M)
Part #:TSD18YM3 (3M)
Part #:TSD18YM10 (10M)
Colours: Orange

Part #:TSD18YM2 (2M)
Part #:TSD18YM5 (5M)
Unit of Measure: EA



SC-LC DUPLEX - 50u

Part #:TSX1YLM1 (1M)
Part #:TSX1YLM3 (3M)
Part #:TSX1YLM10 (10M)
Colours: Orange

Part #:TSX1YLM2 (2M)
Part #:TSX1YLM5 (5M)
Unit of Measure: EA



ST-LC DUPLEX - 50u

Part #:TSX18LM1 (1M)
Part #:TSX18LM3 (3M)
Part #:TSX18LM10 (10M)
Colours: Orange

Part #:TSX18LM2 (2M)
Part #:TSX18LM5 (5M)
Unit of Measure: EA

Standard length in metres.
1M = 3.281 FT

SINGLEMODE 9u UPC FIBER PATCH CABLES



ST-ST SIMPLEX - 9u UPC

Part #:TSY388S1 (1M)
Part #:TSY388S3 (3M)
Part #:TSY388S10 (10M)
Colours: Yellow

Part #:TSY388S2 (2M)
Part #:TSY388S5 (5M)
Unit of Measure: EA



SC-SC SIMPLEX - 9u UPC

Part #:TSY3YYS1 (1M)
Part #:TSY3YYS3 (3M)
Part #:TSY3YYS10 (10M)
Colours: Yellow

Part #:TSY3YYS2 (2M)
Part #:TSY3YYS5 (5M)
Unit of Measure: EA



LC-LC SIMPLEX - 9u UPC

Part #:TSY3LLS1 (1M)
Part #:TSY3LLS3 (3M)
Part #:TSY3LLS10 (10M)
Colours: Yellow

Part #:TSY3LLS2 (2M)
Part #:TSY3LLS5 (5M)
Unit of Measure: EA



FC-FC SIMPLEX - 9u UPC

Part #:TSY377S1 (1M)
Part #:TSY377S3 (3M)
Part #:TSY377S10 (10M)
Colours: Yellow

Part #:TSY377S2 (2M)
Part #:TSY377S5 (5M)
Unit of Measure: EA

Custom lengths available
Breakout Cables w/Pull Eye Kits available



SINGLEMODE 9u UPC FIBER PATCH CABLES



ST-ST DUPLEX - 9u UPC

Part #:TSD388S1 (1M)
Part #:TSD388S3 (3M)
Part #:TSD388S10 (10M)
Colours: Yellow

Part #:TSD388S2 (2M)
Part #:TSD388S5 (3M)

Unit of Measure: EA



SC-SC DUPLEX - 9u UPC

Part #:TSD3YYS1 (1M)
Part #:TSD3YYS3 (3M)
Part #:TSD3YYS10 (10M)
Colours: Yellow

Part #:TSD3YYS2 (2M)
Part #:TSD3YYS5 (5M)

Unit of Measure: EA



LC-LC DUPLEX - 9u UPC

Part #:TSX3LLS1 (1M)
Part #:TSX3LLS3 (3M)
Part #:TSX3LLS10 (10M)
Colours: Yellow

Part #:TSX3LLS2 (2M)
Part #:TSX3LLS5 (5M)

Unit of Measure: EA



FC-FC DUPLEX - 9u UPC

Part #:TSD377S1 (1M)
Part #:TSD377S3 (3M)
Part #:TSD377S10 (10M)
Colours: Yellow

Part #:TSD377S2 (2M)
Part #:TSD377S5 (5M)

Unit of Measure: EA

Standard length in metres.
1M = 3.281 FT

HYBRID SINGLEMODE 9u UPC FIBER PATCH CABLES



ST-SC SIMPLEX - 9u UPC

Part #:TSY38YS1 (1M)
Part #:TSY38YS3 (3M)
Part #:TSY38YS10 (10M)
Colours: Yellow

Part #:TSY38YS2 (2M)
Part #:TSY38YS5 (5M)

Unit of Measure: EA



LC-SC SIMPLEX - 9u UPC

Part #:TSY3LYS1 (1M)
Part #:TSY3LYS3 (3M)
Part #:TSY3LYS10 (10M)
Colours: Yellow

Part #:TSY3LYS2 (1M)
Part #:TSY3LYS5 (5M)

Unit of Measure: EA



ST-SC DUPLEX - 9u UPC

Part #:TSD38YS1 (1M)
Part #:TSD38YS3 (3M)
Part #:TSD38YS10 (10M)
Colours: Yellow

Part #:TSD38YS2 (2M)
Part #:TSD38YS5 (5M)

Unit of Measure: EA



LC-SC DUPLEX - 9u UPC

Part #:TSX3LYS1 (1M)
Part #:TSX3LYS3 (3M)
Part #:TSX3LYS10 (10M)
Colours: Yellow

Part #:TSX3LYS2 (2M)
Part #:TSX3LYS5 (5M)

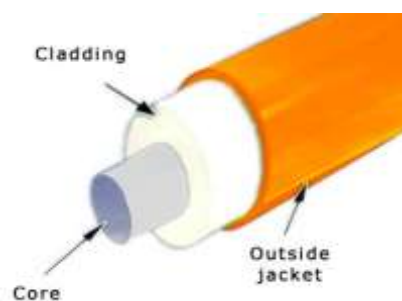
Unit of Measure: EA

Custom lengths available
Breakout Cables w/Pull Eye Kits available



HOW FIBER OPTIC CABLES WORK

The traditional method of data transmission over copper cables is accomplished by transmitting electrons over a copper conductor. Fiber Optic cables transmit a digital signal via pulses of light through a strand of glass. The core is surrounded by a cladding which reflects the light back into the core and eliminates light from escaping the cable.



A fiber optic link works in the following manner. At the one end, the fiber cable is connected to a transmitter. The transmitter converts electronic pulses into light pulses and sends the optical signal through the fiber cable. At the other end, the fiber cable is plugged into a receiver which decodes the optical signal back into digital pulses.

Advantages

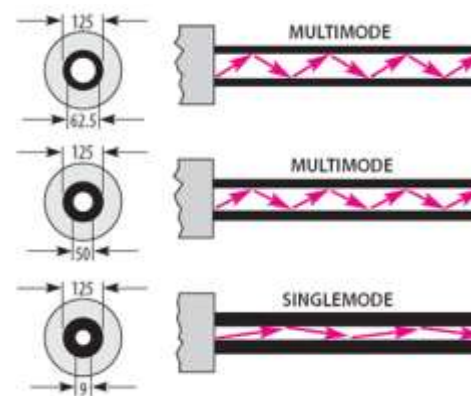
Increased bandwidth, extended cable run, light weight and EMI immunity.

Recommended Cable Lengths

Singlemode: 5-6KM
Multimode: 1-2KM

MULTIMODE VS. SINGLEMODE FIBER

A "mode" in Fiber Optic cable refers to the path in which light travels. Multimode cables have a larger core diameter than that of singlemode cables. This larger core diameter allows multiple pathways and several wavelengths of light to be transmitted. Singlemode cables have a smaller core diameter and only allow a single wavelength and pathway for light to travel. Multimode fiber is commonly used in patch cable applications such as fiber to the desktop or patch panel to equipment. Multimode fiber is available in two sizes, 50 micron and 62.5 micron. Singlemode fiber is typically used in network connections over long lengths and is available in a core diameter of 9 microns (8.3 microns to be exact).



50 micron vs. 62.5 micron fiber

Both 50 micron and 62.5 micron fiber optic cables use an LED or laser light source. They are also used in the same networking applications. The main difference between the two is that 50 micron fiber can support 3 times the bandwidth of 62.5 micron fiber. 50 micron fiber also supports longer cable runs than 62.5 micron cable.

Simplex vs. Duplex Cable

Simplex cable consists of a single fiber optic strand. Data is transmitted in only a single direction, transmit to receive. Duplex cable consists of two fiber optic strands side-by-side. One strand goes from transmit to receive and the other strand connects receive to transmit. This allows bi-directional communication between devices.



FEATURED PRODUCT

Name: Fiber Break Out Cable Assembly
TSOC #TS-CUST-FIB



Reduce installation time by ordering pre-terminated Fiber Optic Break Out Cable Assemblies.



Tool Solutions



TOOLING PRODUCTS

- Cable Prep Tools
- Compression Tools
- Punchdown Tools
- Cable Pulling Tools



MOD CRIMP TOOLS	68
COAX CRIMP & COMPRESSION TOOLS	68
CABLE PREP TOOLS	69
PUNCHDOWN TOOL & REPLACEMENT BLADES	70
PUNCHDOWN & TERMINATING TOOLS	70
MISCELLANEOUS TOOLS	71



MOD CRIMP TOOLS



DATAKOM MOD PLUG CRIMP TOOL

This tool is used to crimp all **TSOC** mod plugs 6P4C, 6P6C & 8P8C. Equipped with cut/strip blades for flat ribbon cable.

Part #: **CT-3368**

Colours: Black

Unit of Measure: EA



TELECOM MOD PLUG CRIMP TOOL

This tool is used to crimp all **TSOC** mod plugs 4P4C, 6P4C & 6P6C. Equipped with cut/strip blades for flat ribbon cable.

Part #: **CT-3346**

Colours: Yellow

Unit of Measure: EA



ENHANCED DATAKOM MOD PLUG CRIMP TOOL

This tool is used to crimp all **TSOC** mod plugs 6P4C, 6P6C, 8P8C & 10P10C. Equipped with cut/strip blades for flat ribbon cable.

Part #: **CT-200**

Colours: Blue

Unit of Measure: EA



DELUXE DATAKOM MOD PLUG CRIMP TOOL

This ratchet tool is used to crimp all **TSOC** mod plugs 6P4C, 6P6C, 8P8C & 10P10C. Equipped cut/strip blades for flat ribbon cable.

Part #: **CT-200R**

Colours: Orange

Unit of Measure: EA

Page 68

COAX CRIMP & COMPRESSION TOOLS



COAX CRIMP TOOL

This ratchet tool is designed for termination of all **TSOC** F type crimp connectors for RG-59 & RG-6 coaxial cable.

Part #: **CT-RG596**

Colours: Red

Unit of Measure: EA



COAX COMPRESSION TOOL

This ratchet tool is designed for termination of all **TSOC** F type compression connectors for RG-59 & RG-6 coaxial cable.

Part #: **CT-RG596SS**

Colours: Red

Unit of Measure: EA



ENHANCED COAX COMPRESSION TOOL

This adjustable ratchet tool is designed to terminate all **TSOC** F, RCA and BNC compression connectors for RG59 & RG-6 coaxial cable.

Part #: **CT-RGSSA**

Colours: Red

Unit of Measure: EA



COAX COMPRESSION TOOL

This ratchet tool is designed to terminate all **TSOC** F type compression connectors for RG11 coaxial cable.

Part #: **CT-RG11SS**

Colours: Red

Unit of Measure: EA



CABLE PREP TOOLS



COAX CABLE PREP TOOL

Adjustable strip tool for RG-59 and RG-6 coaxial cable.

Part #: **MST-332**

Colours: Grey

Unit of Measure: EA



ENHANCED COAX CABLE PREP TOOL

Adjustable cut and strip tool for RG-59, RG-6 and RG-11 coaxial cable.

Part #: **MST-RGA**

Colours: Blue

Unit of Measure: EA



ENHANCED DATACOM PREP TOOL

Adjustable strip and cut tool for UTP and flat ribbon cable.

Part #: **MST-501B**

Colours: Grey

Unit of Measure: EA



TELECOM PREP TOOL

Cut and strip tool for flat ribbon cable.

Part #: **MST-502**

Colours: Yellow

Unit of Measure: EA

PUNCHDOWN TOOLS & REPLACEMENT BLADES



DATACOM IMPACT TERMINATION TOOL

This high quality handle works in conjunction with a variety of blades to terminate 110, 66 or BIX connectors and blocks.

Part #: **PT-3140**

Part #: **PT-3140N**

Colours: Blue/Grey

Handle Only

Handle with 66 & 110 Blades

Unit of Measure: EA



REPLACEMENT 110 BLADE

Replacement 110 blade for PT-3140.

Part #: **PTB-110**

Colours: Black

Unit of Measure: EA



REPLACEMENT 66 BLADE

Replacement 66 blade for PT-3140.

Part #: **PTB-66**

Colours: Black

Unit of Measure: EA



REPLACEMENT BIX BLADE

Replacement BIX blade for PT-3140.

Part #: **PTB-BX**

Colours: Black

Unit of Measure: EA



PUNCHDOWN & TERMINATING TOOLS



TELECOM 66 TYPE TERMINATION TOOL

Impact termination tool for field installation of 66 type blocks in a central office environment.

Part #: **PTCO-66 (REF# QTH38B)**

Colours: Ivory

Unit of Measure: EA



DATACOM PREP & TERMINATION TOOL

This convenient tool is designed to strip UTP cable and terminate 110 type connectors and blocks in field installations.

Part #: **PT-110**

Colours: Ivory

Unit of Measure: EA



IMPACT TERMINATION TOOL

This impact termination tool is used for field installation of the BIX distribution connector. The tool is adjustable to allow for the cutting feature to be turned on/off.

Part #: **PTBX-16A-BL**

Colours: Blue

Unit of Measure: EA



KEYSTONE TERMINATION PUCK – 110 TYPE

This Keystone Termination Puck is designed to securely hold any TSOC Voice or Data 110-Type keystone module during termination.

Part #: **TM314-BASEBK2**

Colours: Black

Unit of Measure: EA

MISCELLANEOUS TOOLS



EZ RJ45 CRIMP TOOL

20FT telescopic pole designed to fish cable.

Part #: **CT-200R-EZ**

Colours: Black/ Blue

Unit of Measure: EA



COMPRESSION KIT

This kit is complete with compression tool, cable prep tool, side cutters, (6) RG-6 F type connectors, (3) RG-6 BNC type connectors & (3) RG-6 RCA type connectors.

Part #: **CT-RGSSAK1**

Colours: Blue

Unit of Measure: EA



GILBERT LOCKING TOOL

This tool is designed for use with the NF-5762 Gilbert Theft Proof F type Terminator.

Part #: **PT-GTT4 (4 INCH)**

Part #: **PT-GTT7 (7 INCH)**

Colours: Blue/Clear

Unit of Measure: EA



SINGLE LINE TESTER

This tool is used to verify an incoming POTS line at the point of demarcation in any Residential or Commercial environment.

Part #: **TEL-20**

Colours: White

Unit of Measure: EA



MISCELLANEOUS TOOLS



TELECOM SPLICE CRIMP TOOL

This tool was designed to crimp all **TSOC** TMUX-01 series splice connectors.

Part #: **CT-SPL1**
Colours: Black

Unit of Measure: EA



B CONNECTOR CRIMP TOOL

This tool was designed to crimp all **TSOC** TMBC-XX series splice connectors.

Part #: **CT-303**
Colours: Black

Unit of Measure: EA



D-SUB PREP TOOL

This tool was designed to insert or extract all **TSOC** crimp type D-Sub pins and sockets.

Part #: **TM-IETOOL**
Colours: Red/White

Unit of Measure: EA



D-SUB CRIMP TOOL

This tool was designed to terminate all **TSOC** crimp type D-sub pins and sockets.

Part #: **CT-DSUB**
Colours: Black

Unit of Measure: EA

Page 71

MISCELLANEOUS TOOLS



VALIDATOR NT-KIT

This network analyzer is equipped with software to help plan, test, verify and document an Ethernet network.

Part #: **NT955**
Colours:

Unit of Measure: EA



TONER & PROBE KIT

This device allows the installer to detect any communication cable in any Commercial and Residential environment.

Part #: **TT250**
Colours: Yellow

Unit of Measure: EA



VDV WIRE MAP

This wire map tester with built in toner is suitable for Voice, Data and Video installations.

Part #: **TP350**
Colours: Yellow

Unit of Measure: EA



CABLE COMB

The **TSOC** #CC-250 Cable Comb is designed to organize Network Cabling during installation and provide a professional appearance.

Part #: **CC-250**
Colours: Yellow/ Blue

Unit of Measure: EA



FEATURED PRODUCT

Name: Cable Comb
TSOC #CC-250 (Pg. 71)



Install UTP or COAXIAL cable in neat and professional bundles using the Cable Comb



Cable Management Solutions



CABLE MANAGEMENT PRODUCTS

- Racks
- Utility Shelves
- Cable Management
- Wall Brackets
- Patch Panels

WALL MOUNT BRACKETS & PATCH PANELS	74
NETWORKS & ACCECORIES	75
WALL BRACKETS & PATCH PANELS	75



WALL MOUNT BRACKETS & PATCH PANELS



KEYSTONE RACK MOUNT PANEL (HIGH DENSITY)

This keystone rack mount panel accepts all **TSOC** keystone modules for any combination.

Part #: **TMPP-16HDBK (1U)**
 Part #: **TMPP-24HDBK (1U)**
 Part #: **TMPP-48HDBK (2U)**
 Colours: Black

Unit of Measure: EA



ADJUSTABLE WALL MOUNT RACK

This hinged wall mount bracket with adjustable depth 9"-13.8" is designed to hold any standard 19" patch panel.

Part #: **TMWB-01BKA (1U)**
 Part #: **TMWB-02BKA (2U)**
 Part #: **TMWB-04BKA (4U)**
 Part #: **TMWB-08BKA (8U)**
 Colours: Black

Unit of Measure: EA



HINGED WALL MOUNT BRACKETS

This hinged wall mount bracket is designed to hold any standard 19" patch panel.

Part #: **TMWB-02BK (2U)**
 Part #: **TMWB-04BK (4U)**
 Part #: **TMWB-04DBK (4U Deep)**
 Colours: Black

Unit of Measure: EA



BLANK KEYSTONE RACK MOUNT PANEL

This 19" rack mount panel accepts all **TSOC** keystone modules for any combination.

Part #: **TMPP-12BK (1U)**
 Part #: **TMPP-24BK (2U)**
 Part #: **TMPP-48BK (3U)**
 Colours: Black

TMPP-16BK (1U)
TMPP-32BK (2U)

Unit of Measure: EA

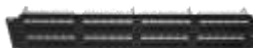


CAT 5E RACK MOUNT PATCH PANEL

This CAT 5E patch panel is designed with 110 termination and will fit any standard 19" wall mount bracket, rack and cabinet.

Part #: **TMPP-128C5EBK (1U)**
 Part #: **TMPP-248C5EBK (1U)**
 Part #: **TMPP-488C5EBK (2U)**
 Colours: Black

Unit of Measure: EA



CAT 6 RACK MOUNT PATCH PANEL

This CAT 6 patch panel is designed with 110 termination and will fit any standard 19" wall mount bracket, rack and cabinet.

Part #: **TMPP-128C6BK (1U)**
 Part #: **TMPP-248C6BK (1U)**
 Part #: **TMPP-488C6BK (2U)**
 Colours: Black

Unit of Measure: EA

NOTE: 1U = 1.75"



NETWORK RACK & ACCESSORIES



NETWORK RELAY RACK

This 19" heavy duty welded 44U relay rack is designed for mounting of Data Network Equipment in the LAN room.

Part #: **DNRR77HDW**
Colours: Black

Unit of Measure: EA



VERTICAL CABLE MANAGEMENT

This 44U vertical cable management is designed with a hinged magnetic door for installation with the DNRR77HDW relay rack.

Part #: **RRCM44UD**
Colours: Black

Unit of Measure: EA



HORIZONTAL CABLE MANAGEMENT

This 19" horizontal cable management is designed with a hinged magnetic door for installation with the DNRR77HDW relay rack.

Part #: **PCMDD19003BK1**
Colours: Black

Unit of Measure: EA

Page 75



WALL BRACKETS & PATCH PANELS



CENTRE MOUNT SHELF

This 19" solid centre mount shelf is designed with front and rear lip for installation with the DNRR77HDW relay rack.

Part #: **DNDMS19BK1**
Colours: Black

Unit of Measure: EA



VERTICAL POWER BAR

This 44U vertical 12 outlet power bar is designed with a 6FT power cord for installation with the DNRR77HDW relay rack.

Part #: **1588T12A1BK**
Colours: Black

Unit of Measure: EA



HORIZONTAL POWER BAR

This 19" horizontal 8 outlet power bar is designed with a 6FT power cord for installation with the DNRR77HDW relay rack.

Part #: **1583T8A1BK**
Colours: Black

Unit of Measure: EA

FEATURED PRODUCT

Name: Adjustable Wall Mount Rack
TSOC #TMWB-8BKA (Pg. 33)



The Adjustable Wall Mount Rack is used when there is space limitations for a full Relay Rack



Telephone Solutions



TELEPHONE PRODUCTS

- Analog Desk Phones
- Analog Wall Phones
- Hospitality Phones
- Business Phones
- Handset Cords
- Replacement Parts
- Peripherals

ANALOG DESK PHONES	78
ANALOG WALL PHONES	78
HOSPITALITY PHONES	79
BUSINESS PHONES	79
TELEPHONES	80
HANDSET CORDS	81
PERIPHERALS	82



ANALOG DESK PHONES



DESK PHONE— BASIC

The standard 2500 telephone fully modular touch-tone communications.

Part #: TTM2500-04	Ivory
Part #: TTM2500-07	Ash
Part #: TTM2500-09	Black
Part #: TTM2500-11A	Red
Unit of Measure: EA	



DESK PHONE—MESSAGE WAITING

2500 w/message waiting lamp fully modular touch-tone communications.

Part #: TTM2500FMW-07	Ash
Part #: TTM2500FMW-09	Black
Part #: TTM2500FMW-11A	Red
Unit of Measure: EA	



DESK PHONE—NO DIAL PAD

The standard desk telephone, Model 2500ND is fully modular. Comes with "No Dial". Ideal for Taxi Stands and the Hospitality Industry.

Part #: TT2500ND-04	Ivory
Part #: TT2500ND-07	Ash
Part #: TT2500ND-09	Black
Part #: TT2500ND-11A	Red
Unit of Measure: EA	

Page 78

ANALOG WALL PHONES



WALL PHONE—MINI

The Mini wall telephone, Model 2554 is fully modular.

Part #: TTM2554-04	Ivory
Part #: TTM2554-07	Ash
Part #: TTM2554-09	Black
Part #: TTM2554-11A	Red
Unit of Measure: EA	



WALL PHONE—LARGE

The standard wall telephone, Model 3554 is fully modular and Touch Tone.

Part #: TTM3554-04	Ivory
Part #: TTM3554-07	Ash
Part #: TTM3554-09	Black
Part #: TTM3554-11A	Red
Unit of Measure: EA	



WALL PHONE—NO DIAL

The standard wall telephone, Model 3554ND is hard wired and does not have a dial pad. Ideal for Taxi Stands and the Hospitality Industry.

Part #: TT3554ND-09	Black
Part #: TT3554ND-11A	Red
Part #: TT3554ND-04	Ivory
Unit of Measure: EA	

Available options:

Armoured Handset Cord
Message Waiting
Volume Control



BUSINESS PHONES



MERIDIAN COURTESY PHONE

The Norstar M7100 provides phone coverage in areas where basic service is required.

Part #: **M7100-01**
Part #: **M7100-09**
Part #: **M7100-16**

Dolphin Grey
Black
Chameleon Grey
Unit of Measure: EA



MERIDIAN 8 BUTTON PHONE

This Norstar M7208 phone is ideal for users who need access to a just a few lines, programmable features, and autodial numbers.

Part #: **M7208-01**
Part #: **M7208-09**
Part #: **M7208-16**

Dolphin Grey
Black
Chameleon Grey
Unit of Measure: EA



MERIDIAN 10 BUTTON PHONE

This fully-featured Norstar M7310 phone is designed for users with more extensive calling and call handling requirements.

Part #: **M7310-01**
Part #: **M7310-09**
Part #: **M7310-16**

Dolphin Grey
Black
Chameleon Grey
Unit of Measure: EA

TELEPHONES



MERIDIAN 24 BUTTON PHONE

This Norstar M7324 expandable telephone is designed to handle heavy call volume and feature requirements.

Part #: **M7324-01**
Part #: **M7324-09**
Part #: **M7324-16**

Dolphin Grey
Black
Chameleon Grey
Unit of Measure:EA



HARMONY DESK PHONE

Analogue touch tone desk telephone with volume control.

Part #: **TTHAR-01R**
Part #: **TTHAR-13N**

Grey
Blue
Unit of Measure: EA



TELEPHONES



MERIDIAN DESK PHONE

A basic analog phone for use in a PBX Environment.

Part #: **M8004-14**
Part #: **M8004-17**

Platinum
Charcoal
Unit of Measure: EA



VISTA CALLER ID PHONE

Caller ID with visual call waiting, 50 Name & number directory, 25 Name & number call log, speakerphone with mute.

Part #: **VISTA350-12**

Charcoal
Unit of Measure: EA



VISTA ENHANCED CALLER ID PHONE

The Vista 480 Meridian phone allows local telephone companies to provide interactive display-based services. It also features visual call waiting options, call display, speakerphone with mute.

Part #: **VISTA480-12**

Charcoal
Unit of Measure: EA

TELEPHONES



MERIDIAN ENHANCED SOHO PHONE

Full featured single line phone with caller ID, visual call waiting and hands free.

Part #: **M9316CW-01**
Part #: **M9316CW-09**
Part #: **M9316CW-16**

Dolphin Grey
Black
Chameleon Grey
Unit of Measure: EA



MERIDIAN 2 LINE SOHO PHONE

Full featured two line phone with caller ID and hands free.

Part #: **M9417-01**
Part #: **M9417-09**
Part #: **M9417-16**

Dolphin Grey
Black
Chameleon Grey
Unit of Measure: EA



MERIDIAN 2 LINE ENHANCES SOHO PHONE

Full featured two line phone with caller ID, visual call waiting and hands free.

Part #: **M9417CW-01**
Part #: **M9417CW-09**
Part #: **M9417CW-16**

Dolphin Grey
Black
Chameleon Grey
Unit of Measure: EA



TELEPHONES & HANDSET CORDS



M SERIES HANDSETS

These replacement handsets were designed for the Meridian style telephones and are available in 3 colours.

Part #: **HSNORM-01N**
Part #: **HSNORM-09N**
Part #: **HSNORM-16N**

Dolphin Grey
Black
Chameleon Grey
Unit of Measure: EA



T SERIES HANDSETS

These replacement handsets for were designed for the Taurus style telephones and are available in 2 colours.

Part #: **HSNORT-14**
Part #: **HSNORT-17**

Platinum
Charcoal
Unit of Measure: EA



CORD KITS

This **CSA** approved flat modular cord kit is equipped with a standard 9FT 4C coil cord + 7FT 2C line cord. Compatible with most telephones.

Part #: **CORDKIT-****
Colours: (See Chart)

Unit of Measure: EA

HANDSET CORDS



COIL CORDS

This flat coiled cord with RJ22 modular connectors is designed for use with any Analogue, PBX or VOIP Telephone Handset.

Part #: **MC4-09MM****
Part #: **MC4-15MM****
Part #: **MC4-25MM****
Colours: (See Chart)

(9FT)
(15FT)
(25FT)
Unit of Measure: EA



COIL CORDS

This **CSA** approved round hard wired coil cord with spaded tips is designed for vintage style 2500 & 3500 telephones. Available in 3 standard lengths and 4 optional colours.

Part #: **MCR4-07SS****
Part #: **MCR4-15SS****
Part #: **MCR4-25SS****
Colours: (See Chart)

(7FT)
(15FT)
(25FT)
Unit of Measure: EA

HANDSET CORD REFERENCE CHART

01 DOLPHIN GREY	02 ALMOND	03 BRIGHT WHITE
04 BEIGE	05 WARM WHITE	06 BANDAGE PINK
07 ASH	08 IVORY	09 BLACK
10 COCO BROWN	11A DEEP RED	12 CHARCOAL
13 HARMONY BLUE	14 PLATINUM GREY	15 DARK GREY
16 CHAMELEON GREY	17 MATTE BLACK	18 ETHER GREY

Nortel Colours HIGHLIGHTED



PERIPHERALS



BUTTON PACKS & USER GUIDES

These kits are available for Nortel M2000, M5000, M7000 and M9000 series phones. Other packages & custom print available. Also available in French.

Part #: **LP-7100**
Part #: **LP-7208**
Part #: **LP-7310**
Part #: **LP-7324**

Unit of Measure: EA



HANDSET CORD ADAPTER WITH PIGTAIL

This 4P4C handset adapter is equipped with a pigtail for recessed handsets and is designed to prevent knots with coil cords.

Part #: **TMAT-103S09**
Part #: **TMAT-103S03**
Colours: Black & White

Unit of Measure: EA



MESSAGE WAITING PAD

This unique device alerts external calls and indicates any message waiting. Includes a Post-It notepad and pen.

Part #: **TM-EMWLWH**
Colours: White

Unit of Measure: EA

PERIPHERALS



HANDSET CORD ADAPTER

These twist free 4P4C handset adapter is available in standard Nortel colours.

Part #: **TMAT-102C01**
Part #: **TMAT-102C03**
Part #: **TMAT-102C09**
Part #: **TMAT-102C16**

Dolphin Grey
White
Black
Chameleon Grey
Unit of Measure: EA



HEADSET TRAINING ADAPTER

This device allows two operators on the same telephone for supervised call training. Equipped with a 6 inch pigtail with a male 4P4C plug and 2 female 4P4C jacks.

Part #: **TM609-4HPT04BK**

Black
Unit of Measure: EA



PRIVACY DEVICE

This privacy device is designed to prevent interruptions during any telephone, fax or data terminal transmissions. Equipped with a 7FT line cord.

Part #: **TMTLS-1WH**

White
Unit of Measure: EA



PERIPHERALS



MODULAR CONSOLE ADAPTER

This 2 prong modular adapter is designed to plug into PBX operator console or ACD headset.

Part #: TM2PMA-09	Black
Part #: TM2PMA-16	Chameleon Grey
Part #: TM2PMA15-09	c/w 15FT Handset Cord
Part #: TM2PMA15-16	c/w 15FT Handset Cord
Unit of Measure: EA	



MERIDIAN TELEPHONE COVERS

This clear cover prevents costly telephone repair and service calls caused by liquid spills, dust and other contaminants.

Part #: TC-M7100	Unit of Measure: EA
Part #: TC-M7208	
Part #: TC-M7310	
Part #: TC-M7324	
Colours: Clear	



BASIC TELEPHONE SHOULDER REST

This basic self adhesive telephone shoulder rest was designed to fit most handsets to allow for hands free operation.

Part #: TMSR-03	White
Part #: TMSR-08	Ivory
Part #: TMSR-09	Black
Part #: TMSR-15	Dark Grey
Part #: TMSR-16	Chameleon Grey
Unit of Measure: EA	

PERIPHERALS



DELUXE TELEPHONE SHOULDER REST

This deluxe self adhesive telephone shoulder rest was designed to fit most handsets to allow for hands free operation.

Part #: TMSR2-03	White
Part #: TMSR2-08	Ivory
Part #: TMSR2-09	Black
Part #: TMSR2-15	Dark Grey
Part #: TMSR2-16	Chameleon Grey
Unit of Measure: EA	



ANALOG STROBE FLASHER

This unique line powered device was designed for a noisy environment or quiet zone. Both ringer and strobe light indicate an incoming call.

Part #: TMSF-600WH	Unit of Measure: EA
Colours: White	



ANALOG ELECTRONIC RINGER

This simple line powered analogue loud ringer connects to an existing phone in series with a modular jack.

Part #: TMMR-100IV	Unit of Measure: EA
Colours: Ivory	



PERIPHERALS



SERVER POWER CORD

This power cord is equipped with a Female (IEC-320-C19) Receptacle and (IEC-320-C20) Plug.

Part #: **TMPC-XXMFBK-C19C20**
XX— Length (Please Enquire)
Colours: Black

Unit of Measure: EA



CPU POWER CORD

This power cord is equipped with a Female (IEC-320-C13) Receptacle and (5-15P) Plug.

Part #: **TMPC-XXMFBK**
XX— Length (Please Enquire)
Colours: Black

Unit of Measure: EA



MONITOR POWER CORD

This power cord is equipped with a Female (IEC-320-C13) Receptacle and (IEC-320-C14) Plug.

Part #: **TMPEC-XXMFBK**
XX— Length (Please Enquire)
Colours: Black

Unit of Measure: EA

PERIPHERALS



MOBILE TELEPHONE RECORDING ADAPTER

TSOC Mobile Telephone Recording Adapter quickly plugs into most Cellular Telephones with a 2.5mm connection and will start recording as soon as the call is received or dialed. This device should be used in conjunction with the TSOC #MPR-1-1G Telephone Tap Recorder or any storage device with a 3.5mm stereo recording input.

Part #: **CRA-124V**
Colours: Black

Unit of Measure: EA



TELEPHONE TAP RECORDER

TSOC Telephone Tap Recorder quickly plugs in between any outlet and Analogue Telephone and will start recording as soon as the Telephone is off hook. This device is powered by 2 AAA batteries but an optional AC power supply is available for maximum storage.

Part #: **MPR-1-1G**
Colours: Black

Unit of Measure: EA



TELEPHONE RECORDING ADAPTER—SOHO

TSOC Telephone Recording Adapter plugs in between most Analog and Digital Telephones and storage device for recording and playback of any telephone conversation.

Part #: **TLP-102**
Colours: Black

Unit of Measure: EA



PERIPHERALS



TELEPHONE RECORDING ADAPTER—ENTERPRISE

TSOC Telephone Recording Adapter plugs in between most Analog and Digital Telephones and a professional storage device for recording and playback of any telephone conversation.

Part #: **TLP-104**

Colours: Black

Unit of Measure: EA



TELEPHONE RECORDING ADAPTER (AMPLIFIED) - ENTERPRISE

TSOC Amplified Telephone Recording Adapter plugs in between most Analog and Digital Telephones and a professional storage device for recording and playback of any telephone conversation.

Part #: **TLP-104SY**

Colours: Black

Unit of Measure: EA



WEBINAR TELEPHONE RECORDING ADAPTER—BASIC

TSOC Webinar Telephone Recording Adapter plugs in between most Digital Telephones and PC Sound Card for recording and playback of any Podcast or Webinar.

Part #: **TMP-636**

Colours: Black

Unit of Measure: EA



WEBINAR TELEPHONE RECORDING ADAPTER—ENHANCED

TSOC Webinar Telephone Recording Adapter plugs in between most Digital Telephones and PC Sound Card for recording and playback of any Podcast or Webinar.

Part #: **TMP-636S**

Colours: Black

Unit of Measure: EA



UNIVERSAL TELEPHONE RECORDING ADAPTER

TSOC Universal Telephone Recording Adapter quickly plugs in between the handset and base of most VOIP, Digital and Analogue Telephones and will start recording as soon as the Telephone is off hook. This device should be used in conjunction with the TSOC #MPR-1-1G Telephone Tap Recorder or any storage device with a 3.5mm stereo recording input.

Part #: **TRI-804SY**

Colours: Black

Unit of Measure: EA



STROBE LIGHT ALERT

TSOC Strobe Light is a high intensity visual alert indicator which is used in conjunction with the 1825 Duet Plus to notify set Ringing, Message Waiting, Telephone In-Use and ACD callers in the queue. Optional lens colours: Amber, Blue or Clear.

Part #: **1126PR**

Colours: Red

Unit of Measure: EA



PERIPHERALS



WEATHERPROOF HORN

TSOC Weatherproof Horn is used in conjunction with the Duet Plus #1825 to allow a loud Telephone Signal or Voice announcement and is compatible with most telephone systems.

Part #: **1185**
Colours: White

Unit of Measure: EA



DUET PLUS

TSOC Duet Plus plugs is designed to be a high performance low frequency Loud Ringer and Paging Amplifier compatible with most telephone systems.

Part #: **1825**
Colours: Grey

Unit of Measure: EA



ANALOG AUX BOX

TSOC Analog Aux Box plugs in between most Analog and Digital Telephones and records data on any PC through a USB cable for playback of any telephone conversation.

Part #: **4105**
Colours: Grey

Unit of Measure: EA

PERIPHERALS



DOOR PHONE KIT

TSOC Door Phone Kit is equipped with the Control Unit, Door Station and Power Supply. This combination provides intercom capability for most telephone systems through a spare trunk port.

Part #: **3026**
Colours: Stainless Steel

Unit of



PULL THROUGH ACCESS POINT

TSOC Access Points are designed to create a simple and effective way to extend HSIA to the desk top using a cable

Part #: **TA-6300**
Colours: Black

Unit of Measure: EA



PULL THROUGH ACCESS POINT

TSOC Access Points are designed to create a simple and effective way to extend HSIA to the desk top using a cable.

Part #: **TA-7300**
Colours: Black/Silver

Unit of Measure: EA



PERIPHERALS



PULL THROUGH ACCESS POINT

TSOC Access Points are designed to create a simple and effective way to extend HSIA to the desk top using a retractable cable.

Part #: **TA-6000**
Colours: Black

Unit of Measure: EA



PULL THROUGH ACCESS POINT

TSOC Access Points are designed to create a simple and effective way to extend HSIA to the desk top using a retractable cable.

Part #: **TA-7000**
Colours: Black/Silver

Unit of Measure: EA



WIRELESS ACCESS POINT

TSOC Access Points are designed to create a simple and effective way to add a wired connection to an existing wireless HSIA network using a retractable cable.

Part #: **TA-6900**
Colours: Black/Silver

Unit of Measure: EA

PERIPHERALS



WIRELESS ACCESS POINT

TSOC Access Points are designed to create a simple and effective way to add a wired connection to an existing wireless HSIA network.

Part #: **TA-8000**
Colours: Black

Unit of Measure: EA



CONFERENCE HUB

TSOC 4 Port Access Hubs are designed to create a simple and effective way to extend multiple HSIA using retractable cables.

Part #: **TA-6500**
Colours: Black

Unit of Measure: EA



MEDIA HUB

TSOC Media Hubs are designed to create a simple and effective way to access Audio & Video signals from the desk top or flush mounted to furniture.

Part #: **TA-7600**
Colours: Black/Silver

Unit of Measure: EA





Transglobal Systems of Canada Inc.
39-6635 Kitimat Road | Mississauga, Ontario L5N 6J2
Tel: 905 813 8762 | Fax: 905 813 7329 | Email: info@tsoc.com



Transglobal Systems of Canada Inc.
39-6635 Kitimat Road | Mississauga, Ontario L5N 6J2
Tel: 905 813 8762 | Fax: 905 813 7329 | Email: info@tsoc.com