

Submittal

WiFi Thermostat 563



Zoning

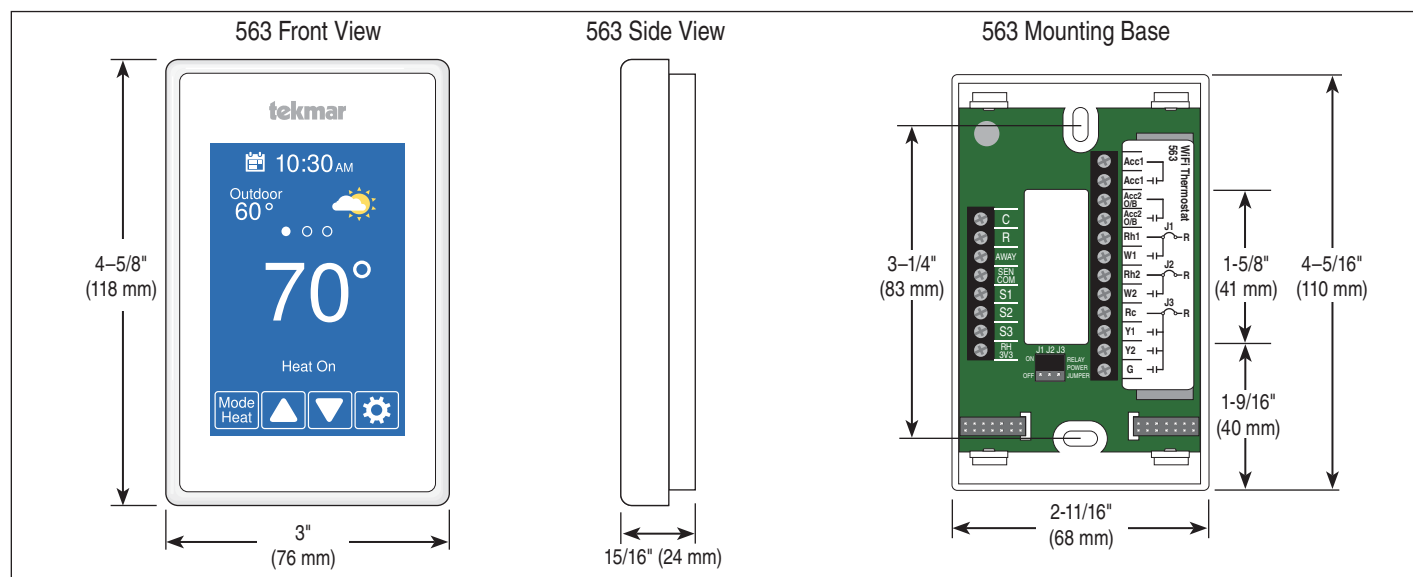
563_C

08/17

Replaces: New

Job _____ Designer _____ Contact _____

The WiFi Thermostat 563 operates either a multi-stage conventional or heat pump HVAC system, a fan, and up to two accessories, including a humidifier, dehumidifier and ventilator. The mobile and web app allow the thermostat to be controlled remotely and includes an Away mode for additional energy savings. The thermostat includes a programmable schedule with early start to heat up or cool down the room by the scheduled time. An optional floor sensor can be installed to enhance comfort and protect floor coverings when operating radiant floor heating systems.



Specifications

WiFi Thermostat 563 Conventional 2H/2C or Heat Pump 4H/2C	
Literature	563_C, 563_D, 563_J, 563_U
Control	Microprocessor control. This is not a safety (limit) control.
Packaged weight	0.7 lb. (300 g)
Dimensions	4-5/8" H x 3" W x 15/16" D (118 x 76 x 24 mm)
Display	3.5" color touchscreen
Enclosure	White PVC plastic, NEMA type 1
Approvals	Meets Class B: ICES & FCC Part 15
Ambient conditions	Indoor use only, 32 to 122°F (0 to 50°C), RH ≤90% non-condensing
Environmental	Do not use in presence of ammonia (animal barns).
Power supply	15 to 30 V (ac/dc), 2 VA, Class 2
Relays	30 V (ac/dc), 2 A, Class 2 circuits
Humidity sensor	0 to 90% ±4% RH
Temperature sensor	NTC thermistor, 10 kΩ @ 77°F (25°C ±0.2°C) β=3892
—Included	None
—Optional	tekmar type # 070, 072, 073, 076, 077, 079, 084, 086, 087
Communications	WiFi 802.11n, 2.4 GHz, WPA2 encryption
Mobile app	Apple iOS 9 or higher, Android 5 or higher
Languages	English/Français/Español
Warranty	Limited 3 Year (See 563_D for full warranty)

Features

- Mobile and web app for remote control
- Away energy savings mode
- Optional remote floor, room, outdoor & relative humidity sensors
- Local outdoor temperature & weather
- Email error and warning notifications
- Automatic time clock
- 7 day programmable schedule
- Early start
- Energy monitoring
- Multiple background colors
- Humidifier window frost protection
- Conventional systems:
 - 2-stage heating, 2-stage cooling, fan and 2 accessories
- Heat pump systems:
 - 4-stage heating, 2-stage cooling, fan, reversing valve and 1 accessory
- Supports dual fuel systems
- Accessory options:
 - Humidifier, dehumidifier, HRV/ERV ventilator, water-source heat pump loop valve

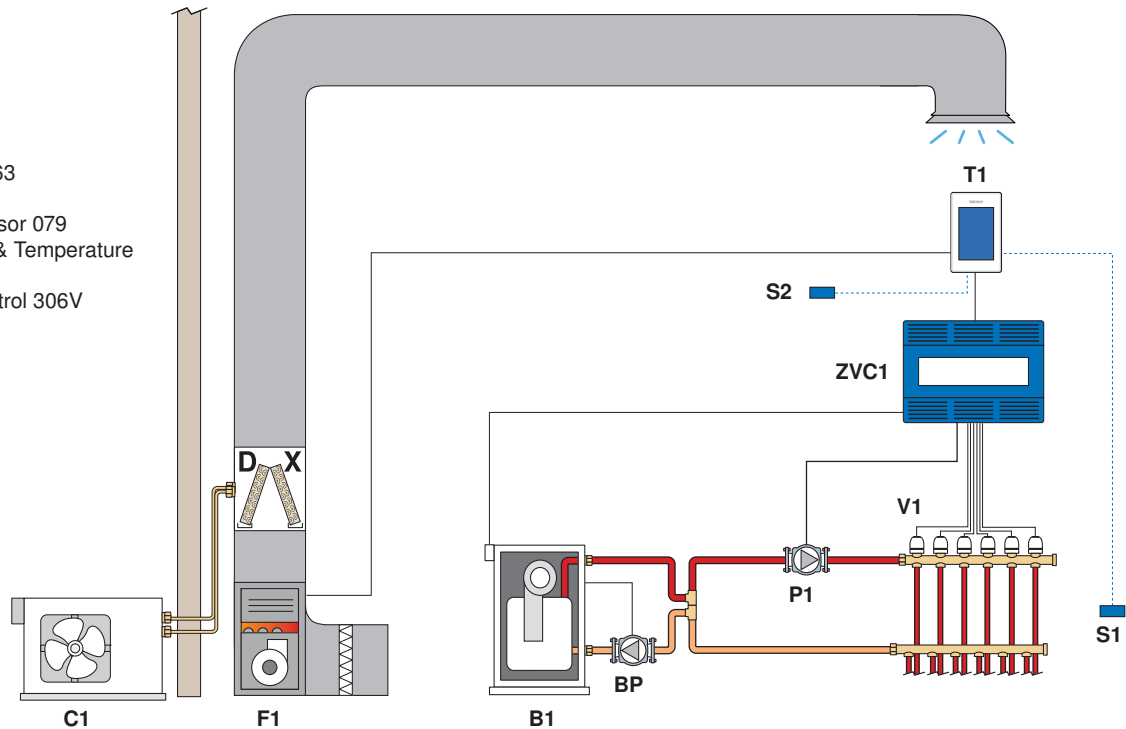
tekmar[®]
A WATTS Brand

Sample Application Drawing

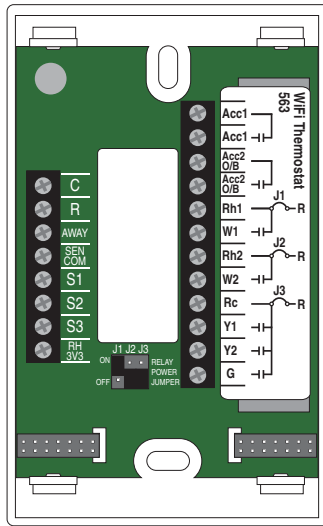
Sample Mechanical diagram

Legend

B1 = Boiler
 BP = Boiler Pump
 C1 = Air Conditioner
 F1 = Furnace
 P1 = Manifold Pump
 T1 = WiFi Thermostat 563
 V1 = Zone Valve
 S1 = Optional Floor Sensor 079
 S2 = Optional Humidity & Temperature Sensor 086
 ZVC1 = Zone Valve Control 306V

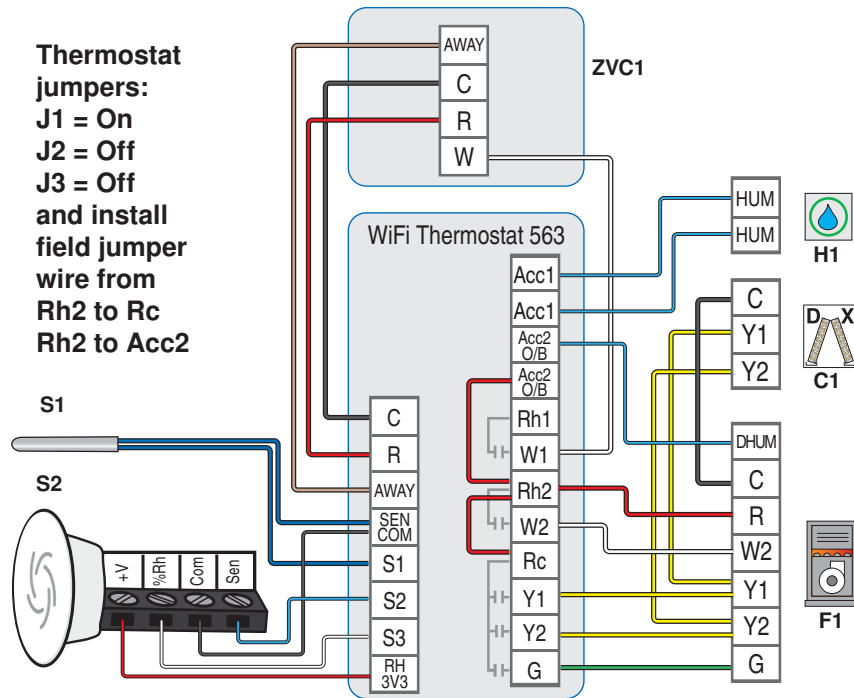


Sample Electrical diagram



Thermostat jumpers:

J1 = On
 J2 = Off
 J3 = Off
 and install
 field jumper
 wire from
 Rh2 to Rc
 Rh2 to Acc2



CAUTION

This Submittal is not intended to provide full installation instructions and safety information. In order to avoid property damage or injury, please refer to the complete installation manual and product safety information provided with the product.

tekmar[®]

A WATTS Brand

All specifications are subject to change without notice.

T: (250) 545-7749 • F: (250) 984-0815
tekmarControls.com