

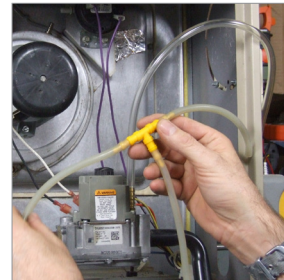


## ***Combination of fittings and tubing for many key measurements***



### **Includes**

- Magnetic probe tips 2 (ASP1)
- Pressure tubes w/ brass fitting 2 (BF100)
- Stepped T fitting (TF100)
- Soft carrying case (AC319)
- 1-Year limited warranty



### **Downloads**



**Data Sheet**



Made in TAIWAN

### **Application**

- Two static pressure tips that eliminate potential errors from velocity pressure. Use these to check total external static pressure (supply to return), pressure change across filters and coils, and many more air distribution pressures.
- Gas valve pressure adapter for quick connections when checking or setting supply and manifold pressures.
- Multi-size "T" fitting for connections on pressure switches and draft sensors. Use the adapter to connect the manometer inline with the pressure tubing.