

Engineering Specification

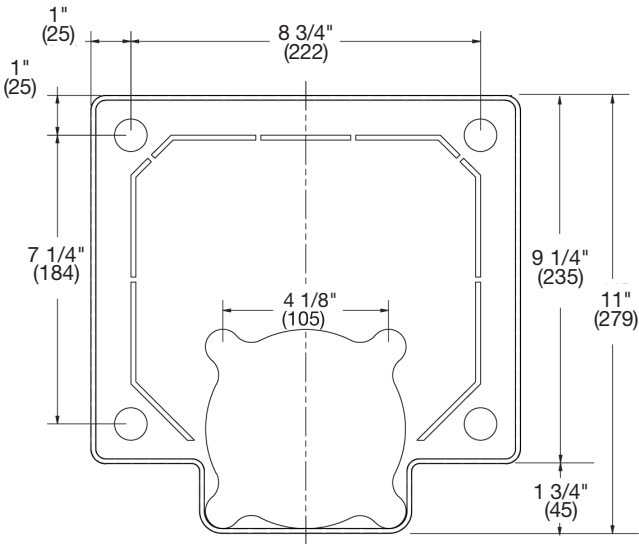
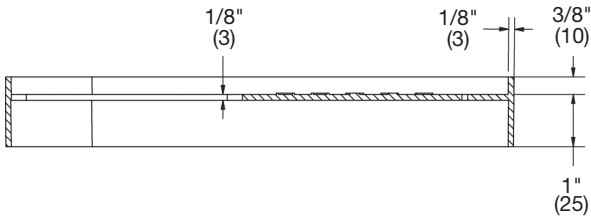
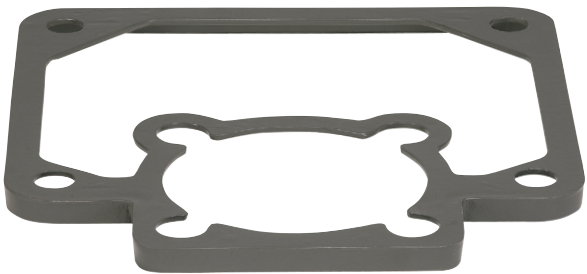
Job Name _____
Job Location _____
Engineer _____
Approval _____
Tag _____

Contractor _____
Approval _____
Contractor's P.O. No. _____
Representative _____

CA-100-M11
Carrier Tiling Frame
Specification

Watts CA-100-M11 ABS black carrier tiling frame.

Options			
Suffix	EDP #	Description	Qty.
CA-100-M11	8132975	Carrier Tiling Frame	<input type="checkbox"/>



NOTICE

The information contained herein is not intended to replace the full product installation and safety information available or the experience of a trained product installer. You are required to thoroughly read all installation instructions and product safety information before beginning the installation of this product.

Watts product specifications in U.S. customary units and metric are approximate and are provided for reference only. For precise measurements, please contact Watts Technical Service. Watts reserves the right to change or modify product design, construction, specifications, or materials without prior notice and without incurring any obligation to make such changes and modifications on Watts products previously or subsequently sold.

