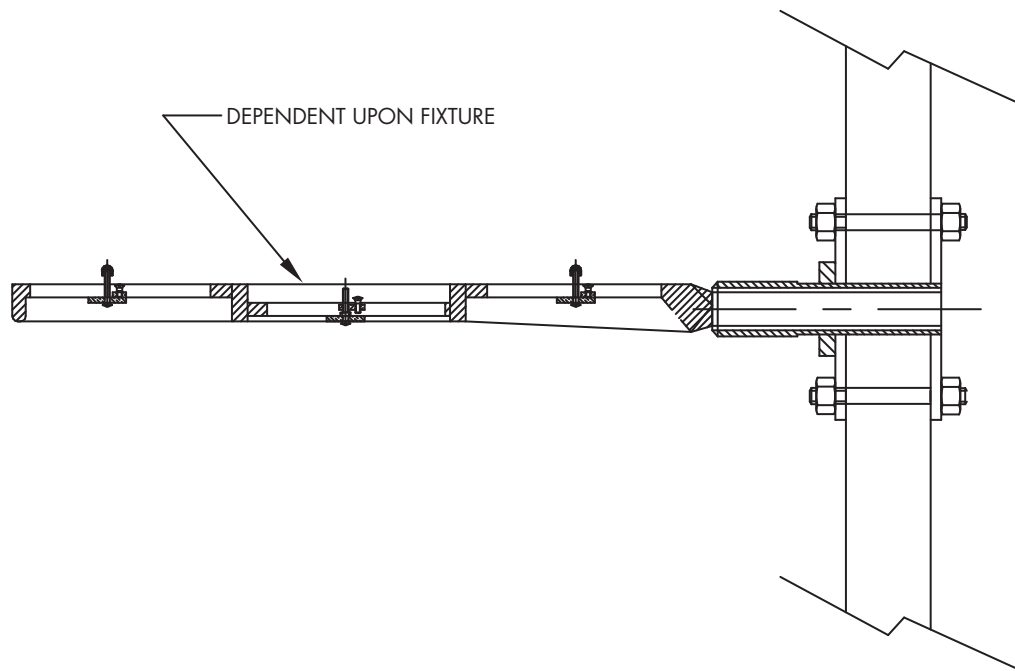
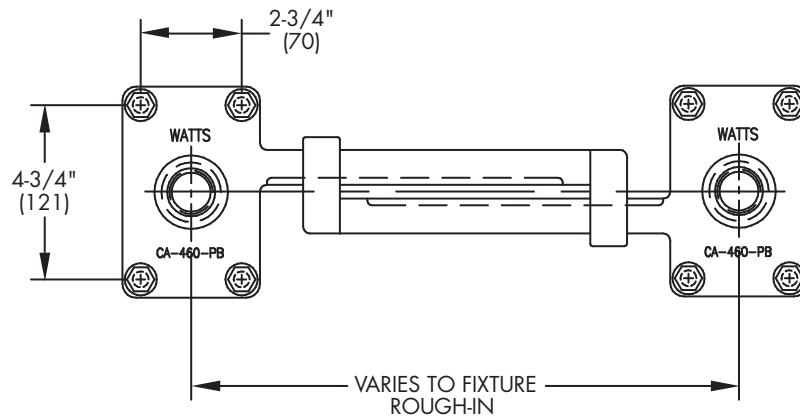




CA-461
Tag: _____

**Wall Mounted Concealed Arm
Lavatory Carrier with Back Plate**

SPECIFICATION: Watts Drainage CA-461 wall mounted concealed arm lavatory carrier with adjustable epoxy coated cast iron wall plate, steel back-up plate, adjustable epoxy coated cast iron arms with levelling screws and basin locking device, and plated hardware.



Job Name _____ Contractor _____

Job Location _____ Contractor's P.O. No. _____

Engineer _____ Representative _____

WATTS Drainage reserves the right to modify or change product design or construction without prior notice and without incurring any obligation to make similar changes and modifications to products previously or subsequently sold. See your WATTS Drainage representative for any clarification. Dimensions are subject to manufacturing tolerances.



Specification Drainage Products

USA: 100 Watts Road, Spindale, NC, 28160-2298; TEL: 828-288-2179 TOLL-FREE: 1-800-338-2581 www.watts.com